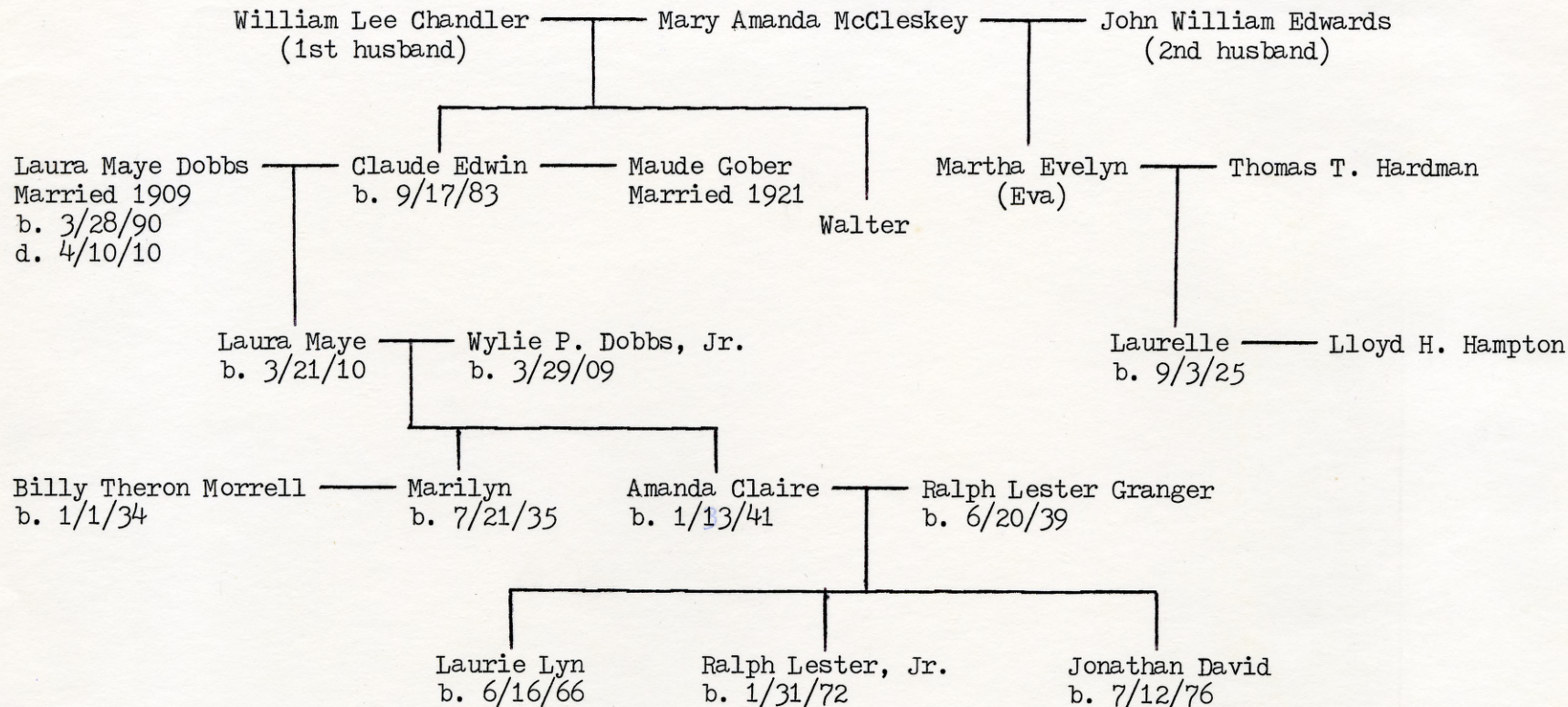


# kennesawor

## Claude Edwin Chandler Photographs and Family Tree

Item Type	Image
Citation	Interview with Claude Edwin Chandler, 1980-03-20, 1980-9-05, Kennesaw College oral history series, Kennesaw State University Oral History Project, 1973-, KSU/45/05/001, Kennesaw State University Archives.
Rights	The digital reproductions on this site are provided for research consultation and scholarly purposes only. To request permission to publish, reproduce, publicly display, broadcast, or distribute this material in any format outside of fair use please contact the Kennesaw State University Archives.
Download date	2026-05-19 13:31:21
Link to Item	<a href="https://soar.kennesaw.edu/handle/11360/6946">https://soar.kennesaw.edu/handle/11360/6946</a>

FAMILY TREE



CLAUDE EDWIN CHANDLER



OLD HOME PLACE WHERE CHANDLER WAS BORN



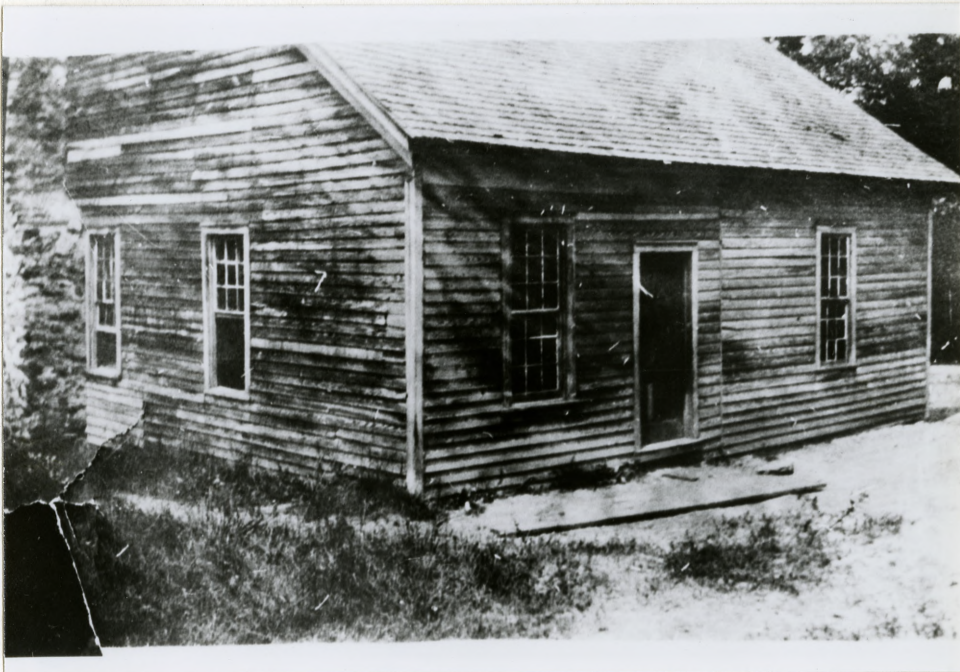
A wedding present to Chandler's mother from her grandfather, Joel Reed, the house still stands and is approximately 100 years old. When the family moved to Cherokee County in 1894, the house and 80 acres were sold for \$800.

HOMES OF THE JOHN W. EDWARDS FAMILY



Top: When Amanda married J. W. Edwards, she moved along with Claude and Walter to this farmhouse in Cherokee County. The baby is Eva. Bottom: After leaving the farm, the family moved during the early 1900's to this house in Woodstock.

ROCKY MOUNT SCHOOL



When he was 5 years old, Claude Chandler attended school in this building.