

kennesawor

KSC Lady Owl Basketball, 1992 - 1993

Citation	Kennesaw State College Lady Owl Basketball Athletic Media Guide, 1992 - 1993, Athletics Media Guides, 1984 - 2009, KSU/16/02, Series 4, Box 1, Folder 37, Kennesaw State University Archives.
Download date	2026-05-16 14:43:34
Link to Item	http://hdl.handle.net/11360/1980

Location: Marietta, Ga. 30061
Enrollment: 11,700
Affiliation: NAIA & NCAA II
Conference: GIAC & Peach Belt
Nickname: Lady Owls
Colors: Black & Gold

Arena: HooterDome (2307)
Head Coach: Ron Walker
Alma Mater: Wooster ('77)
Coach's Record: 124-55
1991-92 Record: 22-9
GIAC Record: 10-2

WHO TO CONTACT

Athletic Director:	Dave Waples	(404) 423-6210
Sports Information Director:	Scott Whitlock	(404) 423-6387
Associate Head Coach:	Susan Montgomery	(404) 423-6413
Assistant Coach:	Randall Goble	(404) 423-6359

Expressly for You
at


Holiday Inn
EXPRESS®

Preferred \$45.00 flat rate (1-4 persons) for team participants and their families

- 147 beautifully designed NEW guest rooms
- Complimentary breakfast bar
- In-room coffee makers
- Remote control TV with ESPN and Showtime
- Shower Massage shower heads
- Free use of SPORTSLIFE Health Club
- Only 2 miles from Kennesaw State College

Holiday Inn Express - Town Center Mall
2485 George Busbee Parkway, N.W.
Kennesaw (Atlanta), Georgia 30144
(404) 427-5210



**OFFICIAL HOTEL FOR ALL
KSC FIGHTING OWLS EVENTS**



Front Row (L-R): V. Manning, A. Willingham, A. Sullivan, M. Smith, Coach Montgomery. Middle (L-R): C. Baker, K. Collins, S. Bradley, T. Soloman, Coach Goble. Back (L-R): K. Watts, M. Fouch, A. Gibbons, S. Boggs, R. Lewis.

LADY OWL OUTLOOK

The Lady Owls 22-9 record in the 1991-92 season marked the second consecutive season Ron Walker's squad has reached the 20-win plateau. Last season saw KSC win its second GIAC crown and make its first ever trip to the NAIA's National Tournament, advancing to the final round of sixteen.

For the Lady Owls to continue the success generated by the past two seasons, Walker must find a way to fill the void created by the loss of seven lettermen, including three starters. Gone from last year's roster are Tracey Marchman (G/11.2ppg), the District 25G Player-of-the-Year; DeWayna Jacobs (C/15.5ppg), a two-time All-District selection; Staci Jordan (G/F/4.1ppg); Jenny Trammell (G/F/3.6ppg) and Sherry Swindell (G/9.5ppg), the school's all-time three point leader.

To restock the shelves the Lady Owls have added six newcomers to their roster of six returning lettermen, this should give KSC the ingredients for another run for the Georgia Conference title. At the point guard position, junior college transfer Amy Sullivan (5-6/Emmanuel) and senior April Willingham (5-4/1.9ppg) will try to fill the shoes of Marchman. Sophomore Vashti Manning (5-7/1.2ppg) and freshman Mandy Smith (5-4/Lakeview Academy) add depth to the position and should see playing time.

Junior Shannon Bradley (5-8/10.2ppg/4.0rpg) returns for her third season at the wing for KSC; while junior college transfer Tara Soloman (5-9/Roane State) and sophomore Kelly Collins (1.0ppg) will fill the positions opened by the graduation of Jordan and Swindell. Sophomore Carroll Baker (5-7/Sequoyah HS) joins the wing rotation and may see plenty of action.

A talented group of returnees and newcomers fill the power forward and center positions. At the power forward spot, sophomore Monica Fouch (5-11/9.9ppg/6.5rpg) returns. Fouch was the second leading rebounder on the squad last season and was named to the All-District Freshmen squad a year ago.

At the center position, a trio of six-footers will plug the hole created by the graduation of the two time All-District selection Jacobs. Transfer Stacey Boggs (6-1/Wake Forest/Soph) will team with red-shirt transfer Aridith Gibbons (6-1/Brewton-Parker/Soph) to lead a young group. Freshman Kim Watts (6-0/Coosa HS) should gain valuable experience off the bench.

If the Lady Owls are to make a return trip to the National Tournament, they must survive their traditionally tough 12 game conference slate that includes the likes of Berry, Brewton-Parker and North Georgia. KSC will also face a demanding non-conference schedule that includes NAIA national powers Auburn-Montgomery and Montevallo plus NCAA Division II heavyweights Jacksonville State, Valdosta State, Lincoln Memorial and USC at Spartanburg. The Lady Owls also have early season tournaments at Wingate College and Georgia College lined up.

1992-1993

NO.	NAME	POS.	HGT.	YEAR	HOMETOWN
11	Tara Soloman	F	5-9	Jr.	Woodbury, Tenn.
12	Carroll Baker	G	5-7	Soph.	Acworth, Ga.
14	Mandy Smith	G	5-4	Fr.	Gainesville, Ga.
20	April Willingham	G	5-4	Sr.	Forsyth, Ga.
22	Amy Sullivan	G	5-2	Jr.	Carrollton, Ga.
23	Kelly Collins	G	5-7	Soph.	Blue Ridge, Ga.
25	Vashti Manning	G	5-8	Soph.	Valdosta, Ga.
32	Shannon Bradley	G	5-7	Jr.	Lilburn, Ga.
33	Kim Watts	C	6-0	Fr.	Cave Springs, Ga.
44	Monica Fouch	F	5-10	Soph.	Hartwell, Ga.
50	Aridth Gibbons	C	6-1	Soph.	Augusta, Ga.
55	Stacey Boggs	C	6-1	Soph.	Greensboro, N.C.





RON WALKER

Head Coach

Ron Walker returned his Lady Owl program back to the 20-win plateau for the fourth time in six years by finishing 22-9 including a GIAC Co-Championship and a visit to the NAIA "Sweet Sixteen" in the National Tournament. Walker earned his third District 25 Coach-of-the-Year award after the 1992 season. During his tenure at KSC, the Ohio native has compiled a 124-55 record.

Walker began coaching at The College of Wooster (Ohio) while earning his bachelors degree. He then moved to Austin Peay State University for a two year stint as a graduate assistant.

Upon receiving his M.Ed. from APSU, Walker went to Albion (Mich.) College. There he served as assistant men's basketball and head softball coach for seven years prior to his arrival at KSC in October of 1986.

Coach Walker and his wife Karen reside in Acworth.

SUSAN MONTGOMERY

Associate Head Coach

Entering her second season on the coaching staff for the Lady Owls will be Susan Montgomery. The Marietta native returns home after a successful coaching stint at Valdosta High School.

After completing her B.S. and M.Ed. (1987) at Valdosta State College, she remained in the south Georgia town to head the VHS squad. Her accomplishments there include guiding a team that had only won three games prior to her arrival to a state play-off appearance in the 1988-89 season.

Montgomery also serves on the faculty in the KSC Health and Physical Education department and will coordinate the KSC athletic department's Drug Education program.



RANDALL GOBLE

Assistant Coach

Randall Goble begins his third year at KSC. This season sees him joining the staff of the Lady Owls as an assistant coach. Randall also serves as the Athletic Facilities Manager for the Fighting Owls.

Randall is a native of Calhoun, where he graduated from Calhoun High School. He attended Dalton JC and the University of Georgia, before receiving his B.S. at Berry College.

While at Berry, he was a member of the Viking squad for two seasons. After graduating, he remained a valuable part of the squad in the position of assistant coach.

He has instructed at several basketball camps including Superstars Camp, the Mike Fratello basketball camp and Berry's team camp. He and wife Theresa reside in Marietta.



LADY OWL SENIOR

20

APRIL WILLINGHAM

5-4 / Guard



The lone senior for the Lady Owls, April hails from Forsyth, Georgia where she prepped at Monroe Academy... While at MA, she pulled in All-State Honors in basketball, softball and track... April is equally strong in the classroom where she has been recognized as a Who's Who of America, at KSC, she was named to Phi Eta Sigma Freshman Honor Society and Golden Key National Honor Society... April has been a key reserve at the point guard position, she will be expected to provide leadership to the young squad.

YEAR	GP	FGM-A	PCT.	FTM-A	PCT.	RPG	PTS	PPG
1989-90	29	19-49	.388	25-37	.676	0.9	64	2.2
1990-91	19	16-39	.410	23-32	.719	0.9	55	2.6
1991-92	18	10-32	.313	15-19	.789	0.8	53	1.9
TOTALS	66	45-120	.375	63-88	.716	0.9	154	2.3

LADY OWL JUNIORS

32

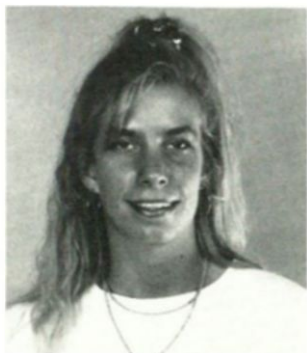
SHANNON BRADLEY

5-7 / Guard



Shannon calls Lilburn, Georgia home and came to KSC after a standout career at Parkview High... At PHS, she grabbed MVP Awards from Gwinnett County, the Georgia North/South All Star game and she participated in the Ga./Tenn. All-Star Contest... As an Owl, Shannon garnered Freshman-of-the-Year in the NAIA District 25... She is listed in seven career Top Ten categories including points per game (5th)... Shannon's long range shooting abilities will be heavily depended on for the Lady Owls this season... She is currently working on a Sports Management degree.

YEAR	GP	FGM-A	PCT.	FTM-A	PCT.	RPG	PTS	PPG
1990-91	30	130-319	.408	69-99	.697	4.3	369	12.3
1991-92	26	87-225	.387	62-89	.697	4.0	264	9.4
TOTALS	56	217-544	.399	131-188	.697	4.1	633	11.3



11

TARA SOLOMAN

5-9 / Forward

Tara resides in Woodbury, Tenn. and joins the Lady Owls after a stellar two-year stay at Roane State Junior College... While at RSJC, she earned all-star honors at the Region, Conference, State and Mid-State level... Tara will be expected to use her experience to lead the young Owls both offensively and defensively from her forward position... Tara plans to earn her degree in Health and Physical Education.



22

AMY SULLIVAN
5-2 / Guard

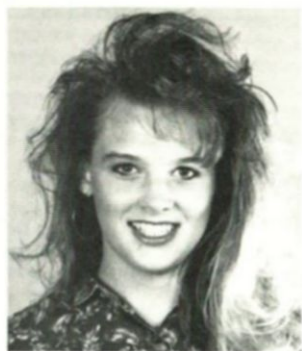
Amy calls Carrollton, Georgia home. . . She joins KSC after a two-year stint at Emmanuel Junior College where she led the squad in free throw and three point shooting percentage. . . At Carrollton HS, Amy picked up a Most Improved Player award and earned All-County team honors. . . She is just as strong academically as she was named to the America's Who's Who list while at CHS. . . Amy will be asked to step in as the floor general from the point guard position. . . Amy is pursuing a degree in psychology.

LADY OWL SOPHOMORES

12

CARROLL BAKER
5-7 / Guard

Carroll is a native of Acworth, Georgia where she prepped at both Etowah and Sequoyah High Schools. . . After her senior season at SHS, she garnered All-Star awards from the Atlanta Tip-off Club-Metro Atlanta Team-of-the-Year and was chosen Player-of-the-Month for December, she captured the Coca-Cola Golden Basketball award, she topped off the year with the National Scholar Athlete Award from the U.S. Army. . . Carroll joins the Lady Owls after spending her freshman campaign with the University of North Alabama. . . She will be expected to provide offensive and defensive support at either the small forward or big guard position. . . Carroll is a pre-med major.



YEAR	GP	FGM-A	PCT.	FTM-A	PCT.	RPG	PTS	PPG
*1991-92	17	10-28	.357	7-16	.438	1.4	31	1.8

*At the University of North Alabama



55

STACEY BOGGS
6-1 / Center

Stacey, a Greensboro, NC native, joins the KSC lineup after a two-year stay at Wake Forest University. . . After spending her first on the sidelines following two knee surgeries, Stacey came on strong to earn a starting position for the Lady Deacs in the rugged ACC before a knee injury forced her back to the training room. . . As a prep star at Pope High School she grabbed national honors by making Blue Star Top 100 Players list and being named a USA Today Honorable Mention All-American. . . Stacey will be counted on to provide strong inside play in the low post positions. . . She is pursuing a marketing degree.

YEAR	GP	FGM-A	PCT.	FTM-A	PCT.	RPG	PTS	PPG
*1990-91	2	1- 4	.250	0- 0	.000	3.5	2	1.0
*1991-92	16	18-44	.409	20-25	.800	2.3	56	3.5
*TOTALS	18	19-48	.396	20-25	.800	2.4	58	3.2

*while at Wake Forest University



23

KELLY COLLINS

5-7 / Guard

Kelly calls Morgantown, Georgia home . . . She came to KSC after a successful high school career at Fannin County where she earned NW Georgia Tip-off Club Team honors along with being named Player-of-the-Month for February, 1991. She was also the recipient of the Coca-Cola Basketball and the U.S. Army's National Scholar Athlete awards . . . Kelly spent most of her freshman campaign in the training room after suffering a knee injury early in the season . . . Will be expected to be a major contributor for the squad at either a guard or forward position.

YEAR	GP	FGM-A	PCT.	FTM-A	PCT.	RPG	PTS	PPG
1991-92	6	3-10	.300	0-0	.000	0.3	6	1.0

44

MONICA FOUCH

5-10 / Forward

Monica hails from Hartwell, Georgia where she prepped at Hart County High School . . . While at HCHS, she was a member of a two-time Georgia AAA state championship team along with being named the Offensive MVP . . . Monica was also named Scholastic Athlete-of-the-Year in both her junior and senior years . . . At KSC, Monica's play earned her All-District Freshman Team honors after leading the squad in field goal percentage and finishing second in rebounding . . . She will be relied upon to continue her strong play from the power forward position . . . Monica is a Sports Management major.



YEAR	GP	FGM-A	PCT.	FTM-A	PCT.	RPG	PTS	PPG
1991-92	31	111-199	.558	85-119	.714	6.5	308	9.9



50

ARIDITH GIBBONS

6-1 / Center

Aridith is a native of Brunswick, Georgia where she prepped at Glynn Academy . . . While at GA, she received the Coaches Award and was named Who's Who of America . . . Last season saw her having to sit out a year after transferring from conference foe Brewton-Parker . . . She will be counted on heavily to provide scoring and rebounds from the post position . . . Aridith is pursuing a degree in biology.



25

VASHTI MANNING
5-8 / Guard

Vashti calls Valdosta, Georgia home where she played for Coach Montgomery at Valdosta High School... At VHS, she was a two-time Coaches Award winner and the Defensive MVP, Vashti also was honored as the Academic Athlete of the Year... Her freshman campaign at KSC saw her primarily coming off the bench in a reserve role at the point guard position for Coach Walker... She will again be counted on as a key reserve for the squad... Vashti is a communications major.

YEAR	GP	FGM-A	PCT.	FTM-A	PCT.	RPG	PTS	PPG
1991-92	11	1-9	.111	11-17	.647	0.7	13	1.2

LADY OWLS FRESHMEN

14

MANDY SMITH
5-4 / Guard

Mandy Smith comes to KSC from Gainesville, Georgia where she prepped at Lakeview Academy... At Lakeview, Mandy earned MVP and Offensive awards from her point guard position, she also earned the distinction of being named Homecoming Queen during her senior year... In her freshman season with the Lady Owls, Mandy will see action in a reserve role at either guard position... She is undecided about her future degree plans.



33

KIM WATTS
6-0 / Guard

A native of Cave Springs, Georgia, Kim prepped at Coosa High School... At CHS, Kim was NW Georgia Tip-off Club Player-of-the-Year and Coosa High's MVP and an All-District selection, she was also named radio station K-98's Player-of-the-Month for January; academically Kim was Coosa's Student-Athlete-of-the-Year and Who's Who of America... As a Lady Owl, she will be a key member of the post rotation during her initial campaign... Kim plans on pursuing a nursing degree at KSC.

	CONFERENCE		OVERALL	
	W-L	PCT.	W-L	PCT.
* Berry	10-2	.833	26-8	.765
KENNESAW STATE	10-2	.833	22-9	.710
North Georgia	7-5	.583	18-11	.621
Brewton-Parker	7-5	.583	13-17	.433
Shorter	4-8	.333	14-15	.483
Ga. Southwestern	2-10	.166	5-19	.208
Clayton State	2-10	.166	8-16	.333

*District Tournament Champion



KSC earned its first National Tournament berth during the 1991-92 season.

TRAINING ROOM STAFF



(L-R): Mark Osada; Mike Redd, Head Trainer; Renee Lewis.

NAME	GP	FGM-FGA	PCT.	FTM-FTA	PCT.	RPG	PTS.	AVG.
DeWayna Jacobs	31	215-416	.517	49-81	.605	7.6	480	15.5
Monica Thomas	31	148-284	.521	58-98	.592	4.5	355	11.5
Tracey Marchman	31	106-256	.414	112-143	.783	3.2	347	11.2
Shannon Bradley	26	87-225	.387	62-89	.697	4.0	264	10.2
Monica Fouch	31	111-199	.558	85-119	.714	6.5	308	9.9
Sherry Swindell	31	116-253	.458	11-18	.611	2.2	295	9.5
Stacie Jordan	31	47-117	.402	33-42	.786	4.4	128	4.1
Jenny Trammell	31	47-101	.465	17-28	.607	3.5	112	3.6
April Willingham	18	10-32	.313	15-19	.789	0.8	35	1.9
Janea Boyles	12	5-9	.556	5-9	.556	0.9	15	1.3
Vashti Manning	11	1-9	.111	11-17	.647	0.7	13	1.2
Kelly Collins	6	3-10	.300	0-0	.000	0.3	6	1.0
Others	—	26-43	.605	10-11	.909	—	62	—
LADY OWLS	31	922-1954	.472	468-674	.694	43.1	2424	78.2
OPPONENTS	31	764-1873	.408	504-753	.669	37.6	2090	67.4

NOTES: 3PT LEADER: **Swindell** (52x105, .495), **Marchman** (23x54, .426), **Bradley** (28x83, .337)
 ... ASSIST LEADERS: **Jordan** (156), **Marchman** (123), **Trammell** (73), **Bradley** (68), **Swindell** (60)
 ... STEAL LEADERS: **Marchman** (105), **Trammell** (55), **Fouch** (48), **Jordan** (42), **Bradley** (42)
 ... BLOCKED SHOT LEADER: **Jacobs** (64).

1991-92 RESULTS

RESULTS	OPPONENT	RECORD	RESULTS	OPPONENT	RECORD
LADY SENATOR CLASSIC					
W 92-67	West Florida	(1-0)	W 74-55	@Shorter	(13-6)
L 72-81	AU-Montgomery	(1-1)	W 87-53	Brewton-Parker	(14-6)
L 83-85	Montevallo	(1-2)	W 76-66	@Catawba	(15-6)
W 97-85	Jacksonville St.	(2-2)	W 84-45	Spelman	(16-6)
W 82-61	@Georgia College	(3-2)	L 94-97	@Berry	(16-7)
L 72-76	Clafin	(3-3)	W 82-76	@North Georgia	(17-7)
L 77-79	@Jacksonville St.	(3-4)	W 74-70	AU-Montgomery	(18-7)
W 83-66	@Valdosta State	(4-4)	W 80-70	Lincoln Memorial	(19-7)
W 52-44	@Mobile	(5-4)	W 84-57	Georgia SW	(20-7)
W 81-68	@Dillard	(6-4)	W 85-49	Shorter	(21-7)
L 70-71	@Brewton-Parker	(6-5)	NAIA DISTRICT TOURNAMENT		
W 71-43	@Clayton State	(7-5)	L 82-86	North Georgia	(21-8)
W 75-64	North Georgia	(8-5)	NAIA NATIONAL TOURNAMENT		
W 81-56	USC-Spartanburg	(9-5)	@ Jackson, Tenn.		
L 73-76	@Montevallo	(9-6)	W 94-90	Rosary	(22-8)
W 53-40	Clayton State	(10-6)	L 40-77	Simon Fraser	(22-9)
W 87-63	@Georgia SW	(11-6)			
W 79-76	Berry	(12-6)			

OPPONENT	W-L	PCT.	OPPONENT	W-L	PCT.
UA-Huntsville	3-0	1.000	Milligan (Tenn.)	2-0	1.000
Armstrong State	1-5	.167	Mobile (Ala.)	2-0	1.000
Auburn-Montgomery	7-4	.636	Montevallo	3-7	.300
Augusta	3-4	.429	Morris Brown	1-2	.333
Berry	5-16	.238	Newberry	1-0	1.000
Brewton-Parker	6-3	.667	North Georgia	10-9	.526
Bryan (Tenn.)	7-0	1.000	Paine	0-2	.000
Carson-Newman	0-3	.000	Phillips (Okla.)	1-0	1.000
Catawba	2-0	1.000	Piedmont	12-3	.800
Charleston	0-1	.000	Rosary (Ill.)	1-0	1.000
Clafin (S.C.)	0-4	.000	St. Leo	2-0	1.000
Clayton State	2-0	1.000	Shorter	11-7	.611
Coker (S.C.)	1-0	1.000	Simon Fraser (Can.)	0-1	.000
Columbus	4-0	1.000	Southern Maine	1-0	1.000
Covenant (Tenn.)	9-0	1.000	SW Baptist (Mo.)	0-1	1.000
Cumberland (Ky.)	0-2	.000	Spelman	4-0	1.000
Dillard (La.)	1-0	1.000	Tampa	1-0	1.000
Edward Waters (Fla.)	0-1	.000	Tennessee Tech	0-1	.000
Flagler (Fla.)	8-0	1.000	Tennessee Temple	7-4	.636
Florida Tech	1-0	1.000	Tenn. Wesleyan	0-1	.000
Florida Memorial	2-0	1.000	Tift	2-2	.500
Florida Southern	0-1	.000	Toccoa Falls	1-0	1.000
Georgia College	13-7	.650	USC at Spartanburg	1-0	1.000
Georgia Southwestern	8-12	.400	Valdosta State	2-2	.500
Georgia Tech	0-1	.000	Warren Wilson	1-0	1.000
Jacksonville State	1-3	.250	West Florida	2-0	1.000
Lee (Tenn.)	6-5	.545	West Georgia	2-7	.222
Lincoln Memorial	1-0	1.000	William Carey	1-0	1.000
Middle Tennessee	0-1	.000	Wofford	1-0	1.000
			ALL-TIME TOTALS	164-120	.577

LADY OWL PAST SEASON RECORDS

		GIAC		OVERALL	
		W-L	PCT.	W-L	PCT.
1982-83	Gary Wisener	1-7	.125	9-14	.391
1983-84	Gary Wisener	6-10	.375	8-19	.296
1984-85	Rhonda Seagraves	3-15	.167	9-21	.300
1985-86	Rhonda Seagraves	7-11	.389	16-12	.571
1986-87	Ron Walker	4-8	.333	19-9	.679
1987-88	Ron Walker	10-2	.833	24-8	.750
1988-89	Ron Walker	12-2	.857	24-4	.857
1989-90	Ron Walker	7-5	.583	15-14	.517
1990-91	Ron Walker	9-3	.750	20-11	.645
1992-92	Ron Walker	10-2	.833	22-9	.710
TOTALS		69-65	.515	164-120	.577

Points	Game:	32, Kelly Alsup vs. Tampa, 12/19/87, Phillips, 1/4/89
	Season:	604, Kelly Alsup, 1987-88
	Career:	1840, Kelly Alsup, 1985-89
Field Goals	Game:	14, Sandra Roberts vs. Piedmont, 1/31/84 14, DeWayna Jacobs vs. Berry, 1/22/92
	Season:	223, Kelly Alsup, 1987-88
	Career:	696, Kelly Alsup, 1985-89
Field Goal Percentage	Game:	1.000 (8x8) Kelly Alsup vs. Augusta, 1/23/85
	Season:	.589, Dawn Denman, 1989-90
	Career:	.555, Mandy Hammett, 1989-92
Free Throws	Game:	14, Kelly Alsup vs. Phillips, 1/4/89 14, Tracey Marchman vs. North Georgia, 2/8/92
	Season:	158, Kelly Alsup, 1987-88
	Career:	448, Kelly Alsup, 1985-89
Free Throw Percentage	Game:	1.000 (10x10), Sharon Baldwin vs. Piedmont, 1/22/86
	Season:	.807, Tracey Marchman, 1990-91
	Career:	.794, Tracey Marchman, 1990-92
Scoring Avg.	Season:	20.2, Sharon Baldwin, 1986-87
	Career:	18.9, Sharon Baldwin, 1985-87
Assists	Game:	16, Gina Waldrip vs. Shorter
	Season:	220, Gina Waldrip, 1989-90
	Career:	390, Gina Waldrip, 1986-90
Rebounds	Game:	24, Vandi Smith vs. Augusta, 2/13/85
	Season:	283, Kelly Alsup, 1987-88
	Career:	922, Kelly Alsup, 1985-89
Rebounds Per Game	Season:	9.6, Beth Horne, 1983-84
	Career:	8.9, Beth Horne, 1982-84
Blocked Shots	Game:	8, Jenni Henderson vs. Montevallo, 11/16/87 8, DeWayna Jacobs vs. Georgia College, 2/2/91
	Season:	65, DeWayna Jacobs, 1990-91
	Career:	129, DeWayna Jacobs, 1990-92
Most Wins		24, 1987-88 & 1988-89
Winning Percentage		.857, 1988-89
Points	Game:	117, vs. Covenant, 12/3/86
	Season:	2539, 1987-88
Scoring Avg.		79.3, 1987-88

**NAIA HONORABLE MENTION
ALL-AMERICA**

Kelly Alsup, 1988 and '89

NAIA DISTRICT PLAYER-OF-THE-YEAR

Tracey Marchman, 1992

ALL NAIA DISTRICT 25

Kelly Alsup, 1987, '88, and '89
Sharon Baldwin, 1986
Mindi Beaver, 1989, '90, and '91
Pam Fields, 1988
DeWayna Jacobs, 1991 and '92
Tracey Marchman, 1992

ALL GIAC

Kelly Alsup, 1986, '87, '88, and '89
Sharon Baldwin, 1986
April Barton, 1989
Mindi Beaver, 1989, '90, and '91
DeWayna Jacobs, 1991 and '92
Tracey Marchman, 1992

**NAIA DISTRICT
FRESHMAN-OF-THE-YEAR**

Sharon Baldwin, 1986
Mindi Beaver, 1988
Shannon Bradley, 1991

NAIA DISTRICT 25 FRESHMAN TEAM

Kelly Alsup, 1986
Sharon Baldwin, 1986
Mindi Beaver, 1988
Sherry Blackwell, 1988
Shannon Bradley, 1991
Monica Fouch, 1992
Mandy Hammett, 1990
Monica Thomas, 1992

LADY OWL LETTERMEN

Lisa Alexander (1) 1982-83
Kelly Alsup (4) 1985-89
Sharon Baldwin (2) 1985-87
April Barton (4) 1985-89
Mindi Beaver (4) 1987-91
Vicki Berdanis (2) 1982-84
Sherry Blackwell (2) 1987-89
Jeanna Bonds (1) 1983-84
Janea Boyles (2) 1990-92
*Shannon Bradley (2) 1990-92
Karen Chandler (4) 1985-89
*Kelly Collins (1) 1991-92
Dawn Denman (1) 1989-90
Kathy Dunn (1) 1982-83
Pam Fields (2) 1986-88
*Monica Fouch (1) 1991-92
Mandy Hammett (2) 1989-91
Dana Harris (1) 1985-86
Kim Harris (1) 1989-90
Lynne Hasty (1) 1984-85
Jenni Henderson (3) 1986-89
Beth Horne (2) 1982-84
Sherry Honea (1) 1990-91
Rhonda Hulsey (3) 1984-87
DeWayna Jacobs (2) 1990-92
Staci Jordan (2) 1990-92
Traci Lewis (1) 1987-88
Tracey Marchman (2) 1990-92
*Vashti Manning (1) 1991-92
Anne May (1) 1983-84

Regina Moses (1) 1983-84
Kim Nichols (2) 1987-89
Maria O'Brien (4) 1983-87
Jill Osada (3) 1983-86
Angie Penrod (1) 1985-86
Desma Radford (3) 1987-90
Beverly Ridings (1) 1984-85
Sandra Roberts (2) 1983-85
Janice Russell (2) 1982-84
Michelle Scott (1) 1982-83
Robin Shaw (3) 1984-87
Vandi Smith (3) 1983-86
Tabby Southern (1) 1989-90
Kelly Stephens (2) 1986-88
Donna Stevenson (3) 1983-86
Jeanne Strudivant (1) 1982-83
Sherry Swindell (3) 1989-92
*Monica Thomas (1) 1991-92
Angie Touchstone (1) 1982-83
Jenny Trammell (4) 1988-92
Tammy Tripp (1) 1988-89
Conny Trundle (3) 1988-91
Jennifer Turner (2) 1984-86
Gina Waldrip (4) 1986-90
Kelly Williamson (2) 1983-85
*April Willingham (3) 1989-92
Sharon Willis (1) 1982-83
Shelia Willis (1) 1982-83
Rhonda Yarbough (2) 1985-87
Candice Zachery (1) 1982-83
*Active

Covering KSC Basketball

Press Credentials are not required for admittance to the press table area, but the KSC Sports Information Office asks that visiting media contact SID Scott Whitlock at least one day in advance at Kennesaw State College, Marietta, Ga. 30061, (404) 423-6387. Also the Sports Information Office asks that only working members of the media and visiting teams make requests for press table accommodations. Children and non-workers will be asked to leave.

Press Services

Statistics, lineups and game notes are available before home games. A member of the Sports Information staff serves as official scorer. The media will have access to game statistics and other information. A FAX is located in the Physical Education offices and is available at no charge.

Radio

Georgia Intercollegiate Athletic Conference schools are required to provide a radio line free of charge to visiting conference schools. Visiting non-league schools may use a KSC line for a \$50 fee.

Talking With The Coaches

Coaches Walker and Montgomery will be more than happy to conduct interviews and are available weekday mornings. For telephone interviews, please contact them directly at the KSC Department of Athletics, (404) 423-6284. Interviews with the coaches while they are on the road should be made through the SID Department. At the conclusion of home games, the coaches will be available for post game interviews near the KSC bench.

Player Interviews

All KSC players will conduct interviews throughout the season by calling the sports information office at (404) 423-6387. Post game interviews can be arranged near the KSC bench.



1992 District Player-of-the-Year, Tracey Marchman.

1992-93 SCHEDULE

Wingate College Invitational

[Belmont Abbey, Bluefield St., Charleston (W.Va.), Claflin,
High Point, KSC, Mars Hill, Pikeville, Wingate]

Friday	Nov. 20	Belmont Abbey		2:00
Saturday	Nov. 21	TBA		TBA
Sunday	Nov. 22	TBA		TBA
Wednesday	Nov. 25	Georgia College	Home	5:30
Saturday	Nov. 28	Spelman	Away	7:00
Monday	Nov. 30	Mars Hill	Home	7:00

Georgia College Tournament

[Georgia College, KSC, Paine, West Georgia]

Friday	Dec. 4	West Georgia		6:00
Saturday	Dec. 5	TBA		TBA
Monday	Dec. 14	Lincoln Memorial	Away	7:00
Wednesday	Dec. 16	Valdosta State	Home	6:00
Saturday	Jan. 2	Jacksonville State	Away	8:00
Monday	Jan. 4	*Clayton State	Home	7:00
Wednesday	Jan. 6	*North Georgia	Away	7:00
Monday	Jan. 11	USC-Spartanburg	Away	5:30
Wednesday	Jan. 13	*Brewton Parker	Home	7:00
Saturday	Jan. 16	*Clayton State	Away	2:00
Monday	Jan. 18	*Georgia Southwestern	Home	7:00
Wednesday	Jan. 20	*Berry	Away	6:00
Saturday	Jan. 23	*Shorter	Home	6:00
Monday	Jan. 25	*Brewton-Parker	Away	7:00
Thursday	Jan. 28	Auburn-Montgomery	Away	8:00
Wednesday	Feb. 3	*Berry	Home	6:00
Saturday	Feb. 6	*North Georgia	Home	6:00
Monday	Feb. 8	Montevallo	Home	7:00
Wednesday	Feb. 10	Central Wesleyan	Home	6:00
Monday	Feb. 15	*Georgia Southwestern	Away	7:00
Wednesday	Feb. 17	*Shorter	Away	6:00
Monday	Feb. 22	NAIA District Tourney	TBA	TBA
Wednesday	Feb. 24	NAIA District Tourney	TBA	TBA

*Georgia Conference Game