



# The STING The STING

Southern Technical Institute

Marietta, Georgia 30060

Volume 5/Issue 12

January 14, 1980

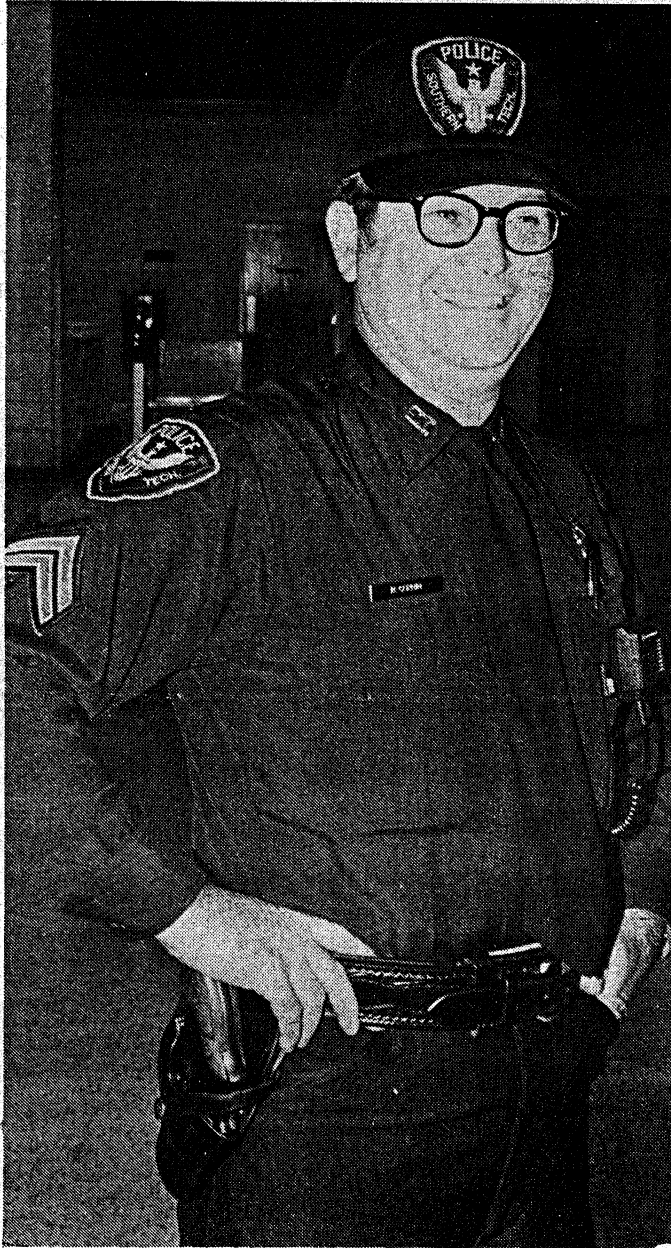
## CAMPUS CRIME

By Paul Roper

## IS IT A PROBLEM?

Crime at STI. You don't hear much about it. It must be very well organized. Or maybe it's underground? The truth of the matter is, according to our Chief of Police Mr. B. Howard, it is practically non-existent. So if crime isn't a problem, what do we need a police department for? Can the cost to us as students be justified? Is it necessary for us to have nine officers, ten students and a secretary employed by a school without a crime problem? The answer to these questions is definitely, yes! Mr. Howard has been Chief of Police at STI every since it was moved to Marietta and spent 11 years on the force at Georgia Tech prior to that. Mr. Howard strongly believes that an ounce of protection is worth a pound of cure. For this reason, the Police Department is open 24 hours a day all quarter long. Officers are constantly surveying the campus. When you walk out to your car today, take a quick look around. It's almost certain you'll see one of our security team. If not, can you be sure that one of them doesn't currently have you under surveillance?

Isn't it nice to know that they are watching that car of yours? You know that your briefcase, \$22 Physics book, drawing set, AM/FM cassette player and half empty bag of Doritos that sit on your front seat are very unlikely to be missing when you return after a six hour lab, back to back with a four hour, two credit hour course. Doesn't that justify the expense. Very inexpensive insurance if I may say so myself. However, it's not only your car that the department takes care of. It also watches over your facilities. All rooms are checked nightly to be sure they are locked, and are



This is one of Southern Tech's finest. He's out there to help and protect you, the student. He loves Southern Tech and her students. A man dedicated to justice.

kept watch on at all hours. Even the dormers can lie happily in their beds knowing that their security force is keeping their home safe from vandals, thieves, and solicitors.

The only problem that you should be wary of is outsiders (i.e. men dressed in white who claim to be here to clean the swimming pool). So, if you see someone who looks very suspicious or even slightly suspicious, let your police department know; for your own protection. Even though crime is not a problem here, take precautions. Treat your car as if you were parking in downtown Atlanta, in an alley, at 2:00 AM on Wednesday morning. Lock your car, put any invitations to thieves in your trunk where they are out of sight and remember to take your keys with you. If you live in a dorm, keep your room locked and don't leave your valuables lying around. All students should be careful with their things. Take one last look back to your desk when you walk out and remember your gear when you leave the student center or library.

The police department is here to help you. Your safety and well being is its major concern. So if you have a problem of any kind come to the station, chances are that they'll know what the best thing to do about it is.

Crime at STI? It's not very well organized at all, it's not underground, and it is practically non-existent. Just one more thing about our school that makes us proud to be Hornets! Let's keep it that way!!

You can help prevent crime if you report: suspicious persons, questionable activities, dangerous conditions to the STI Police at 428-6265 or 424-7348.

## AN OPEN LETTER: THE STI BAND

Dear Student:

The 1980's mark a new and exciting decade for Southern Tech. As part of the college's advance into the future, the newly organized Southern Tech Band is actively soliciting membership for its 1980 performing season.

As a vital musical organization under professional direction, the band can enhance your musical talents and promote musical culture on campus. Plans are present-

ly under way for performances supporting campus activities and for regular concerts. If you have had any previous musical experience playing brass, woodwind, or percussion instruments, or if you have had marching band, drum and bugle corps, or auxiliary unit experience and would like to be a performer with the 1980 Southern Tech Band, please take a moment and come by the EET Department and fill out a registration form. If you can't come or need further

information, please call the EET Dept. at 424-7246. The band will practice Tuesdays and Thursdays from 7:30-9:00 PM each week in the Student Center.

This year promises to be exciting, so go ahead and get those fingers and embouchures back into shape with a little preliminary practice.

See you there.

C.F. Adams  
Director  
STI Band



# LETTER TO THE EDITOR

Dear Editor:

It is a sad day in Mudville when one department in this school issues a check and another will not accept it! Have you ever tried to pay for anything at the Book Store with a check you received in the Financial Aid Office? I am appreciative that Ms. Glover has the compassion for Night Students to remain at school until the ungodly (at least according to the Cashier's Office) hour of 6:00 PM. But what the hell good is the check if the Book Store will not accept it?

I have been at STI for 5 years. Two of those years I spent as a night student. It would seem to me that in all those years, something would be done to aid the "Mis-directed" Administration in understanding the needs of night students. But Nooo! The only time the Cashiers Office is open past 4:00 PM is at the first of the quarter when they get theirs! The only time the Book Store buys books is at the end of the quarter? I guess that since the demand is low, they can justify paying you half price for a 3 month old book!!

Thank God I am graduating soon (I hope). I only hope that some day, in this school's "Separated" future, efforts will be made to cater to the "Bread Winning" Students or us "Poor Night Students". Give 'em hell grave yard shift!!!

Leroy Walden

P.S. I won't even go into the problems with the Registrar's Office.

# THINK PLAID

While picking a student's mind last week  
I shocked its frontal lobes and observed a tweak  
Instead of anger or embarrassment (for the second time)  
Its cerebellum spat, "Think plaid, my man."

Wiping the spittle off my glass  
"Repeat you glob, you ignorant mass!  
Just what could you possible mean  
By this mad, think plaid scheme?"

It laughed (or quivered) and slid up close  
Bent my arm, browned my nose  
Its last few words 'fore the cortex I lanced  
Where "Whatever the music you dance!"

It laughed anew, then life ebbed away  
Stranding this wizard of the younger day  
While I turned its riddle from right to left  
Never catching its drift.

I tossed and turned in my rack that night,  
Stabbed by its riddle, however trite  
At dawn raced the answer on the horse nightmare  
"Whatever the outcome, it's fari."

"The angry young man tearing up the streets  
is solid red and ofttimes green,  
Makes a lot of noise but seldom attains  
First Class passage on the gravy train.

But the coll young man, curbed tongue, clever, wise  
Reveals his anger with his eyes  
Seizes his power when the grey ones' wane  
Ascends the ladder 'thinking plaid' my man.

And whatever music the grey ones play,  
He dances to the music....their way.

Brother Lee Love

## POST OFFICE PROCEDURES

The Post Office Box System has been, and continues to be the recipient of many foul comments and the brunt of misplaced communications. Complaints include lost mail, theft, wrong delivery and three or four people sharing the same box.

As of November 1, new post office procedures go into effect which will make mail delivery more reliable and private. The change standardizes the campus post office procedures. Initially there will be questions and some individual confusion, but post office personnel are prepared to help students with particular problems or questions.

### GOALS

Box assignments were made which will ensure only one assignment per box. Assignments will be valid as long as students are continuously enrolled at STI or until the box is relinquished voluntarily.

All dorm students have been assigned

a box that will be used as the official mailing address unless they specify otherwise. Once assigned, the Post Office Box becomes the mailing address to which official school mail (i.e., grades, notices, etc.) will be sent. Also, students will continue to receive U.S. Mail there.

At anytime a student desires to change his official address, he/she will complete a Change of Address form available from the Post Office or the Registrar's Office.

### TRANSITION

During the change notices were placed in boxes requesting students to so indicate if they wish to continue use of their boxes. Some students have already notified the Post Office this quarter and those requests will be honored.

A list of new box assignments are posted in the Post Office. Students should consult the list to determine if their box numbers

have been changed. Every effort has been made to ensure as few changes as possible, but because of multiple assignments, some reassignment was necessary.

Students whose names do not appear on the list and who desire a box should request a box from Post Office personnel.

### VALIDATION

The address indicated on the Validation Sticker is the address on file with STI and is the address to be used for checking out library books at the STI Library or any of the co-operating college libraries.

### HELP

Your help is needed if the post office system is to be improved. Your suggestions for improvement are important. Please put your comments in writing and leave them at the post office window. Each suggestion will receive consideration.



# ENTERTAINMENT

## THE VARIETY ENTERTAINMENT CLUB OF ATLANTA

Back by popular demand, The Variety Entertainment Club is offering Southern Tech the opportunity to purchase their new Winter/Spring coupon books at a tremendous savings.

Students, Faculty, and staff can purchase the Variety coupon books for ONLY \$8.00--a \$6.00 Savings off the retail price of \$14.00. The coupon books are valid from January 1 through June 30, 1980.

Variety Club members will enjoy a Free Dinner or Special Offer when another dinner is purchased at the same time at 84 popular Atlanta restaurants including Journey's End, Eng's, Harrison's on Peachtree, Pelican's Landing, Barn Dinner Theatre, Gregory's, Spencer's, Torea, La Fiesta, Ivey's South, Melear's Barbecue, Mad Italian, and Colorado Mining Company; two movie admissions for the price of one at 16 theatres including the four Plitt Theatres and the Septum Theatres; two admissions for the price of one at the Academy Theatre and Academy Children's Theatre; Special Sports Bonuses including the Atlanta Braves, Jellibeans Rollerena, and Iceland of Atlanta; and Super Vacation Packages to Las Vegas, Nassau, Hawaii, and even a Bahamas Cruise. Over 110 coupons and six months to enjoy using them.

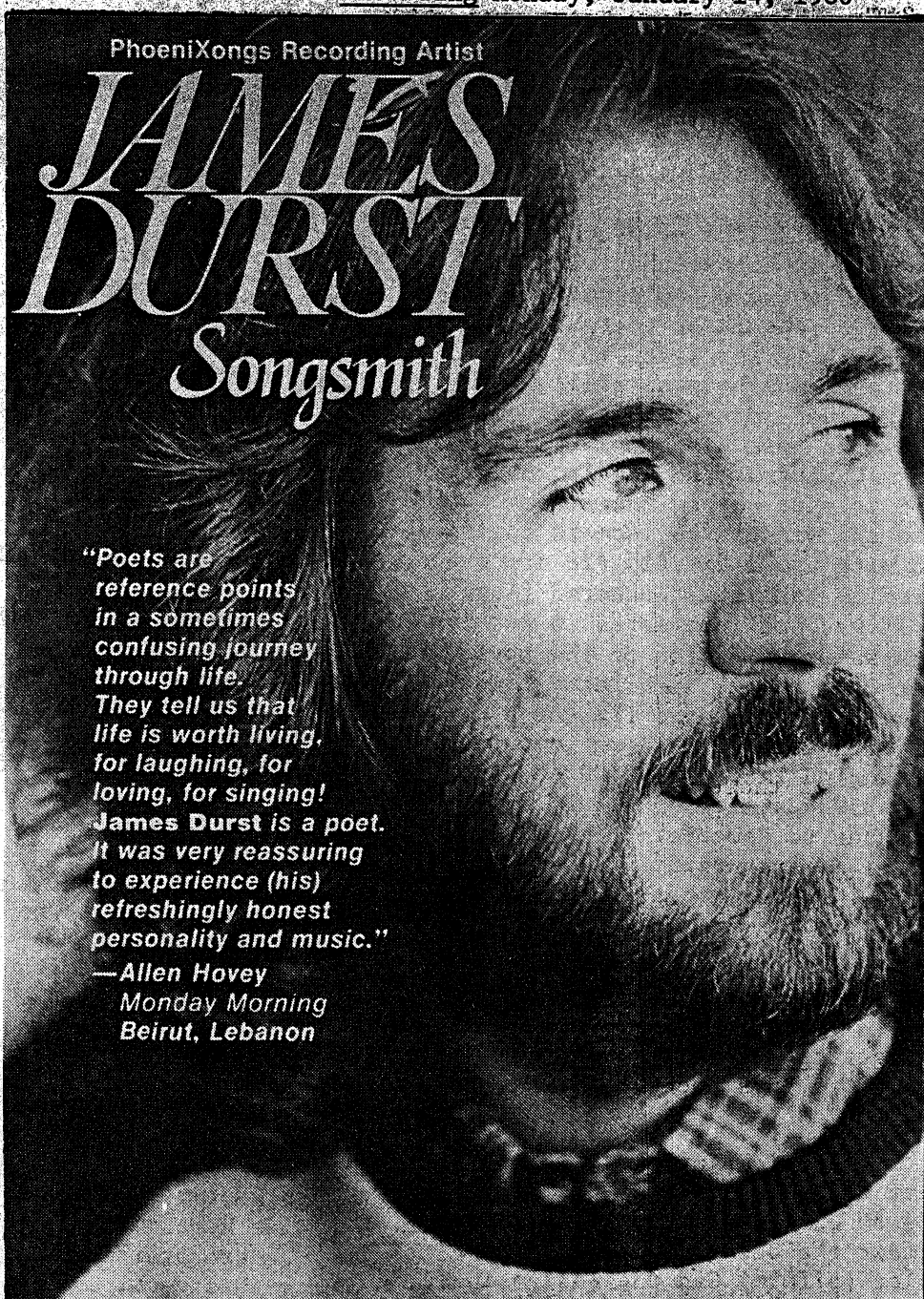
Don't Delay!! ORDER YOUR VARIETY COUPON BOOK TODAY for only \$8.00 and start saving money while haveng FUN.

To order see the Student Center Office.

PhoenixXongs Recording Artist

# JAMES DURST

## Songsmith



"Poets are reference points in a sometimes confusing journey through life. They tell us that life is worth living, for laughing, for loving, for singing! James Durst is a poet. It was very reassuring to experience (his) refreshingly honest personality and music."

—Allen Hovey  
Monday Morning  
Beirut, Lebanon

CAB PRESENTS A COFFEE HOUSE WITH JAMES DURST ON TUESDAY, JANUARY 22, IN THE STUDENT CENTER AT 8 P.M. ADMISSION IS FREE.

## CONCERTS

CIVIC CENTER	The Nights Hawks	Jan 18-19
Oake Ridge Boys & Tammy Wynette	Catfish Hodge Blues Band	Jan 24
	Jan 26 Savoy Brown	Jan 26
AGORA BALLROOM		
Steve Forberts	Jan 15	CAPRI
Starcastle	Jan 17	Closed for Maintenance.

## STEREOPHONES COME OF AGE

Stereophones were a "can't miss" product when they were first introduced, mainly because they offered listeners "a room of their own" for stereo enjoyment. People even reported saved marriages and friendships.

"Stereophones are no longer merely a convenience or peace-keeping item," says Jon R. Dally, president of Audio-Technical U.S., Inc., which features a full line of stereophones. "They have become an important hi-fi component in their own right."

A unique ambiance results from the music's close proximity. "It seems to come from inside your head" is a common phrase used in describing the listening sensation. Headphones also enhance stereo separation and balance, because the speakers are always equidistant from your ears--even if you walk around the room.

Headphones also completely eliminate two major problems in owning speakers: the squeeze on floor and shelf space and poor room acoustics. No matter how sophisticated the stereo system, poor room acoustics

can ruin the sound of the music," Kelly emphasizes.

Perhaps the most crucial advance in stereophone design in recent years has been in comfortability. A few years ago, heavy, bulky models were the only type of quality headset available. Today's lighter versions weigh as little as four or five ounces, and conform to your head so you hardly notice they're on.

While they provide excellent sound, they still avoid total isolation, so a ringing telephone or doorbell is audible. And heavier versions are available for those who prefer to shut out all external noises.

Improved technology has made stereophones a favorite with audiophiles for another reason. The "sound" value.

"It's possible to significantly upgrade most stereo systems for much less money than the price of new speakers," Kelly explains. "Good stereophones that sell for \$30 to \$150 may offer sound quality comparable to speakers that cost twice as much."

Choosing which headphones to buy is a pleasant dilemma, because there

are good values whether you're splurging or economizing.

If you simply want good-sounding, lightweight stereophones at a low price, you can find quality moving coil dynamic models to fit your needs for as low as \$30.

However, to take full advantage of a sophisticated hi-fi system, many stereo enthusiasts step up in the dynamic line to models with lower distortion, more sensitivity and improved frequency response. They can cost up to about \$80.

And for the ultimate audiophile, there are electret condenser stereophones. These require a transformer, and cost up to \$150 or more. But the sound is remarkable clean and crisp, rivalling the best speakers available.

Whatever your headphone needs, Kelly suggests that comfort should be a top priority when comparing models. Give each set a thorough testing in the store. Does the band feel comfortable on top of your head? Is the set too heavy for your ears? Does it stay in place? If they don't feel good, don't kid yourself--you won't want to wear them very long at home.



# ORGANIZATIONS

AIIE  
WINTER 1980

## TKE

TKE would like to welcome everyone back to school this quarter. We hope everyone had a great holiday. 1980 should be a great year for TKE. We have initiated 15 from Fall Rush and have several still waiting.

As usual we are ready for basketball. The team has been working out since Christmas and are looking forward to that number one trophy.

Also the winter tub race is coming. TKE with tub's #12, #18, #28 are prepared to take the checkered flag.

If you are interested in working with an organization on the move then come to our Rush Party Monday night 8:00 PM at the TKE House, 1420 Canton Hwy. Or come to our meeting on Thursday 12:00 AM in Room 350 upstairs in Lab Building.

### Dates to Remember:

- Jan. 14 - Rush Party
- March 1 - Red Carnation Ball
- Feb. 23 - Leadership Conference in Atlanta
- Feb. 16-17 - Tub Race

## LIGHTING PROGRAM

SPONSORED BY: CSI STUDENT CHAPTER

How do lighting techniques affect the security of a building? How do different types of lighting affect the design choices, from color to form? Can the design integrity be maintained while building safety and security are upheld?

If you want to know more about contemporary lighting techniques, V.C. Schickedanz, of the Halo Lighting Company, can answer your questions and keep you informed.

The Student Chapter of the Construction Specifications Institute will present this special lighting program on Wednesday, January 16 at 12:00 noon in Room 119 of the Student Center.

Join us!

## ASME

On Tuesday, January 15, ASME will hold a general meeting at noon in room 120 of the Student Center. The program will be a film on the structural failure of the Tacoma Narrows Suspension Bridge. The film will be introduced by Dr. Logue of the Physics Department. People from all majors are welcome!

## GAVU IXTAY WITTU FAEGO?



TUESDAY JANUARY 15, 6:00 PM  
Atlanta Chapter of AIIE  
Riveria Hyatt House  
Speaker: Dr. David Belden,  
Executive Director of AIIE  
SEE PROF APT FOR RESERVATIONS

TUESDAY JANUARY 22, NOON  
Southern Tech AIIE in Room 358  
Speaker: Mr. Bob Porteous  
Industrial Engineering in The  
Utility Industry"

THURSDAY, JANUARY 31, NOON  
PLANT TOUR  
Philadelphia Carpet Company  
Cartersville, Georgia

TUESDAY, FEBRUARY 26, NOON  
Southern Tech AIIE in Room 358  
Speaker: Mr. Joe Tulkoff  
"What's Up A Lockheed"

FEBRUARY 21-23  
Student Regional Conference  
NC State University  
Some expenses paid

## LAMBDA CHI ALPHA

The brothers and associate members would like to thank everyone for attending our Winter Quarter Rush Party, we all had a good time and we hope our guests did too.

We are starting our basketball team this week, anyone who is interested in playing for our team should see Bill McCloud.

The Red Cross Blood Drive is coming to Southern Tech this week and we hope that everyone will help them by donating some of your blood. It would be really good to see the Red Cross meet their goal of 100 pints.

The Lambda Chi Alpha Fraternity meets every Thursday at 12:00 in Room 119 in the Student Center. Visitors are more than welcome.

## Campus Paperback Bestsellers

1. **Chesapeake**, by James Michener. (Fawcett, \$3.95.) Multi-family saga along Maryland's Eastern Shore: fiction.
2. **Nurse**, by Peggy Anderson. (Berkley, \$2.50.) Personal and professional life of a nurse in a city hospital.
3. **Mommie Dearest**, by Christina Crawford. (Berkley, \$2.75.) Life with mother: Joan Crawford.
4. **A Distant Mirror**, by Barbara W. Tuchman. (Ballantine, \$6.95.) Europe in the 14th century.
5. **Scruples**, by Judith Krantz. (Warner, \$2.75.) Rags to riches in the fashion world: fiction.
6. **Fools Die**, by Mario Puzo. (NAL/Signet, \$3.50.) Casino gambling and its fallout: fiction.
7. **Pulling Your Own Strings**, by Wayne W. Dyer. (Avon, \$2.75.) How to master your life.
8. **The World According to Garp**, by John Irving. (Pocket, \$2.75.) Hilarious adventures of a son of a famous mother.
9. **The Culture of Narcissism**, by Christopher Lasch. (Warner, \$2.95.) American life in an age of diminishing expectations.
10. **Second Generation**, by Howard Fast. (Dell, \$2.75.) On-going story of Italian family in "The Immigrants": fiction.

Compiled by *The Chronicle of Higher Education* from information supplied by college stores throughout the country. December 31, 1979.

# Scholarships

The Atlanta Chapter of the National Academy of Television Arts and Science in fulfilling its purpose to advance the Arts and Sciences of television throughout the State of Georgia announces the establishment of two one year scholarships of \$750.00 each.

### ELIGIBILITY:

Candidates must have completed their Junior year by the September following the awarding of the scholarship.

Candidates must be in a course of study preparatory to a career actively and creatively engaged in Television including but not limited to: production, performing, writing, and designing.

### SELECTION PROCESS:

College will submit maximum of two (2) candidates.

Submissions will include:

1. Application, with extra-curricular activities, awards and honors lists, and financial need statement;
2. two (2) faculty or professional recommendations;
3. transcript.

NATAS Atlanta selection committee will make final selection based on applications AND personal interview. (Ground travel of candidate will be paid by Academy.)

Scholarship will be selected by March 24, 1980 and awarded at the Emmy Awards Banquet in Atlanta, June 28, 1980. This process will be followed each year.

Scholarship will be made payable to the student C/O the chosen college to apply toward tuition.

### Non enrollment:

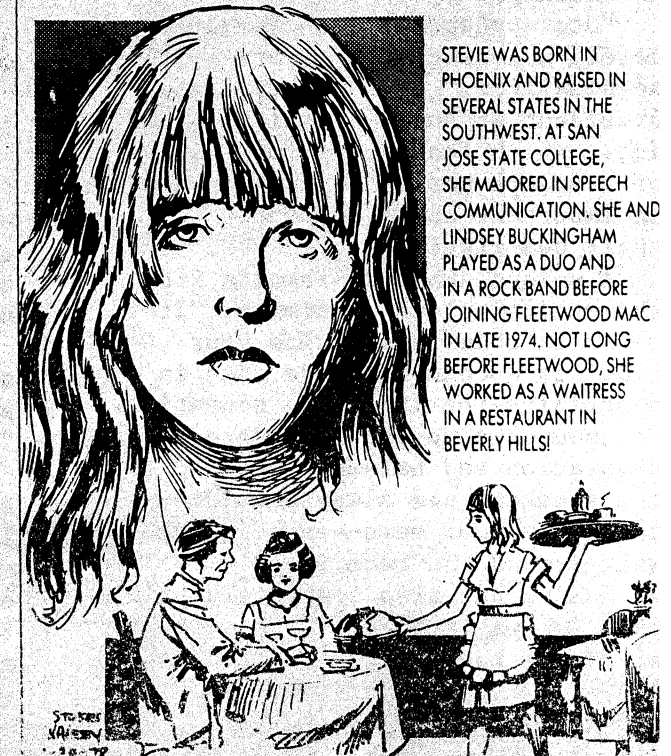
Scholarship reverts to special account of NATAS Atlanta in the event that winner does not continue studies pursuant to career outlined above in the Fall immediately after receipt.

For further information contact:

Darryl B. Cohen  
1550 Peachtree Summit Building  
401 West Peachtree Street, N.E.  
Atlanta, GA 30308  
(404) 659-8880

## ROCKPILE by STOKES WALESBY AND AL CUNNIFF

### STEVIE NICKS



STEVIE WAS BORN IN PHOENIX AND RAISED IN SEVERAL STATES IN THE SOUTHWEST. AT SAN JOSE STATE COLLEGE, SHE MAJORED IN SPEECH COMMUNICATION. SHE AND LINDSEY BUCKINGHAM PLAYED AS A DUO AND IN A ROCK BAND BEFORE JOINING FLEETWOOD MAC IN LATE 1974. NOT LONG BEFORE FLEETWOOD, SHE WORKED AS A WAITRESS IN A RESTAURANT IN BEVERLY HILLS!



# walk on!

By: Philip Mayo

Although the parking area is often full to capacity, a good percentage of the students do not own cars. These students must use other methods of transportation. Most students prefer common methods such as hitchhiking or bumming rides. Other students prefer to use motorcycles or bicycles. I prefer to walk. If a person is properly prepared, walking can be the most reliable way to travel. Since I have a great deal of experience in the art of walking, I will discuss some of the things needed for proper preparation. The basic equipment consists of a pair of feet, a body to move with the feet, and a place for the feet to go.

The feet take the worst punishment while walking. Therefore, it is a good idea to let the feet rest after every mile. Also the feet should be

inside a good pair of sneakers or tennis shoes. Sneakers are light and comfortable. Also they give the feet the extra speed needed for crossing highways or escaping from vicious dogs. Professional track shoes do not protect the feet from sharp stones and rusty nails. The bottom or sole of the sneaker should be at least half an inch thick. I recommend rubber bottoms because they are easy to walk on. They are also good for stepping over fallen electrical power lines.

The body can be of any color, age, or size. A large body is preferred for walking through tough neighborhoods. If the body is not large, a small weapon can be carried inside a sneaker.

Since the winter months have arrived, the body should be dressed

with warm clothes. A pair of gloves and a hood are recommended for cold days. Since the body may travel over some rough terrain, the clothing should be made of a tough material.

A destination for the feet is quite important. What would the purpose of walking be without a destination? Choosing a destination involves several factors such as the distance, the time available, the walking conditions, the terrain covered, and the actual benefit gained upon reaching that destination. Some people walk four miles, through open fields, just to get a meal at a favorite fast food place. One famous little girl walked through a black forest just to get back to Kansas.

Once you are satisfactorily prepared, you are ready to set forth on that yellow brick road. I wish you luck and good fortune on your way.

## NUCLEAR SAFETY OPTION

The associate degree in Electrical Engineering Technology, Nuclear Safety option, was accredited for the first time by the Engineer's Council for Professional Development (ECPD) in their report submitted to the college earlier this month.

It was the first time the program had been submitted for accreditation; at the time of the ECPD's last visit to STI six years ago,

the Nuclear Safety option did not yet have graduates. The program's first degrees were awarded in 1974-1975.

In addition to awarding accreditation to the Nuclear Safety program, the ECPD Board of Directors re-accredited all STI programs up for re-accreditation October 11. A team of experts in various fields throughout the U.S. including professors in engineering technology,

deans, department heads and people from industry toured the STI campus February 5-6, 1979 to evaluate programs for accreditation.

Only curricula leading to the associate degree in IET, Industrial Management option; the bachelor degree in IET, Industrial Distribution option; the associate degree in Textile Management; and the associate degree in Fire Science Technology are not accredited.

# JACK'S

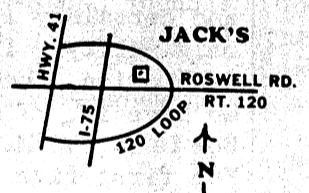
# Hold - in - the - Walk

# RESTAURANT

NOTHIN' FANCY JUST GOOD FOOD  
JACK'S STYLE

- Home made soups & desserts • Sandwiches
- Quiche • Steaks & Chops

**PARKWAY VILLAGE**  
ROSWELL RD. & 120 LOOP  
next to Handy City  
**977-9277**  
OPEN 7 DAYS  
6 am-10 pm



### LUNCH • DINNER

11:00 a.m. - 10:00 p.m.

SALAD BAR . . . 1.80

SOUP OF THE DAY . . . Cup .90  
Bowl 1.50

Soup and Salad . . . . . 1.50  
Chili and Bread . . . . . 1.15  
Tuna Salad . . . . . 2.25  
Chicken Salad . . . . . 2.25  
Fruit Salad & Cottage Cheese . 2.25

#### SANDWICHES

Served with French Fries

Grilled Cheese . . . . . 1.25  
Ham & Swiss . . . . . 2.75  
Roast Beef . . . . . 2.50  
Turkey . . . . . 1.90  
Tuna Salad . . . . . 2.10  
Chicken Salad . . . . . 2.10  
Corned Beef . . . . . 2.75  
Pastrami . . . . . 2.75  
Club Sandwich . . . . . 2.25  
Hamburger - Plain . . . . . 2.00  
Hamburger - Smothered onions . 2.10  
Hamburger with cheese . . . . . 2.25  
Hot Dog . . . . . 1.50

#### SIDE ORDERS

French Fried Potatoes . . . . . .65  
Hash Browns . . . . . .60  
Potato Pancakes . . . . . .60  
Cole Slaw . . . . . .60

#### YOUNG PEOPLE

(Under 12)

Hamburger, French Fries & Milk . . . . . 1.90  
Hot Dog, French Fries & Milk . . . . . 1.25

Take Out Orders Available

#### OMELETS

Cheese . . . . . 2.55  
Farm . . . . . 2.95  
Pizza . . . . . 3.75  
Spanish . . . . . 2.65  
Spinach & Sour Cream . . . . . 2.75  
Name Your Own (We'll try it) . 3.25

#### QUICHE

Quiche Lorraine . . . . . 2.40  
Quiche of the Day . . . . . 2.40  
(With Salad)

#### STEAKS & CHOPS

Rib Eye Steak . . . . . 8.95  
2 Pork Chops . . . . . 5.95  
2 Lamb Chops . . . . . 6.95  
(All served with Baked Potato and Salad Bar)

#### DESSERTS

Home Made Pie . . . . . 1.00  
Home Made Cheese Cake . . . . . 1.30

#### BEVERAGES

Tea . . . . . .35  
Coffee . . . . . .40  
Coke, Tab, Sprite, Orange, Mt. Pibb . . . . . .40  
Milk . . . . . .40 Large .75

ASK ME ABOUT OUR "SPECIAL FOR TODAY"

BREAKFAST SERVED FROM 6:00AM - 11:00AM

LUNCH AND DINNER SERVED FROM 11:00AM - 10:00PM

LUNCHEON "SPECIAL" EVERYDAY

HOME COOKED FRESH VEGETABLES DAILY

## BREAKFAST TOMORROW

Yes, Buy One of our Breakfast specials & Get Any Breakfast of equal or Lesser Value Absolutely Free

- with coupon featuring
- fresh squeezed O.J.
  - name your own omelets
  - home baked biscuits
  - sausage & rsd eye gravies

# FREE!

OFFER GOOD TUE. - FRIDAY ONLY  
Expires: Jan. 31, 1980



# CONTEST

AGNES SCOTT WRITERS' FESTIVAL  
INVITES MANUSCRIPTS FOR ITS POETRY  
AND FICTION CONTESTS

DEADLINE FOR SUBMISSIONS:  
FEBRUARY 1, 1980

Prizes of \$100.00 each will be awarded for the best poem and the best story, at this year's Festival (April 3 and 4, 1980).

- Contributors must be enrolled in a college or university on Ga.
- Works entered must not have been published except in campus newspapers or magazines.
- Those manuscripts judged best will be published in the Festival issue of AURORA.

- No more than five (5) typed pages of poetry may be submitted by a contributor.
- No more than two (2) typed stories of 3,000 words or fewer may be submitted by a contributor.
- If manuscripts are to be returned, they must be accompanied by a self-addressed, stamped envelope.
- No contestant may win either prize more than twice.

MAIL ENTRIES TO:

AGNES SCOTT WRITERS' FESTIVAL  
DEPARTMENT OF ENGLISH  
BOX 915  
AGNES SCOTT COLLEGE  
DECATUR, GA 30030



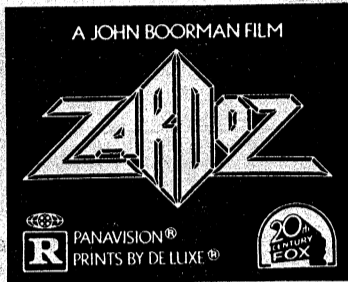
A JOHN BOORMAN FILM



20th Century Fox Presents  
SEAN CONNERY in ZARDOZ Written, Produced and Directed by JOHN BOORMAN  
Also-starring CHARLOTTE RAMPLING SARA KESTELMAN And JOHN ALDERTON  
R PARENTS STRONGLY CAUTIONED  
PANAVISION® PRINTS BY DE LUXE®

## THE LOG IS HERE

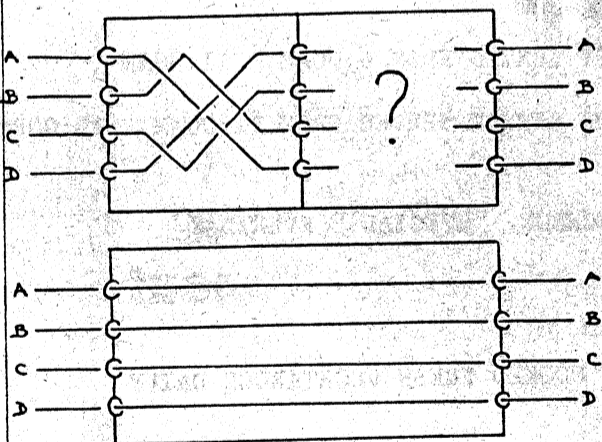
They can be picked up in the publications office between 9-1 Monday thru Friday. You must have been enrolled a total of two quarters.



## STINGERS

from de Caux

An ingenious puzzle can be fun to solve. Just for fun then I'm going to pass some of my favourites along to you in this column. Most of these puzzles have been around for years and certainly I make no claim to originality. If you think you have a solution, then write it up and let me have it. I'm in 256b and my mailbox is in the Mathematics Department. The first five successful solvers will be acknowledged in the next issue of the STING.



The top diagram shows how four cables have been run through a cable chamber. As you can see, they have been interlaced. Is it possible to continue the cable runs through an adjacent cable chamber so that when the wall between the two chambers is removed, then the cables can be uncrossed and pulled parallel to each other without cutting and splicing as shown in the lower diagram?



"ZARDOZ", Sci-Fi at its best. The time is 2293 and the world is desolation except for the Vortex, a Utopian commune ruled by the Externals who have everything except the right to die. Starring: Sean Connery and Charlotte Rampling.

JAN. 17 at 4:00, 6:00, and 9:00 P.M.

## MAKE YOUR BEST INVESTMENT OF



If you are troubled by...  
HEADACHES STIFF NECK  
BACKACHES SHOULDER PAIN  
SINUS TROUBLE DIZZINESS  
ASTHMA NERVOUSNESS  
ALLERGIES ARTHRITIS  
LEG PAIN and MANY OTHER...

YOU OWE IT TO YOURSELF  
TO DO SOMETHING ABOUT IT!

FREE X-RAY

Presentation about Natural Health every Thursday Night. Refreshments served afterwards.

AT

THOMAS CHIROPRACTIC LIFE CENTER  
1135 CLAY STREET  
(directly across from STI)

Phone 422-9288



## NEW TRENDS

PRINCETON, N.J.--A new educational trend is slowly taking shape throughout the United States--adult education or, as some call it, "lifelong learning."

No longer is education being viewed as just for the young. Instead, it is increasingly being seen as an activity to be enjoyed throughout life.

"The term 'lifelong learning' is really meant to embrace learning from the cradle to the grave," said Dr. K. Patricia Cross, a research scientist at Educational Testing Service (ETS) in Berkeley, Ca. "In practice, however, most people talking about lifelong learning are primarily concerned with adult learning because adults present the new wrinkle in education."

Cross said it is an old-fashioned notion that adults have left their school days behind forever. The enrollment of adults is rising, especially in community colleges, and research conducted for the Commission on Nontraditional Study indicates that there is a massive move on the part of colleges to attract adult learners.

"By recent estimates, one of every four adults is currently involved in some kind of organized learning activity," Cross said. "Experts expect that by the year 2000, when adults over 30 will make up the majority of the population, even more adults will be involved in some form of continuing education."

"Colleges and universities are particularly interested in adult learners, both because the traditional 18-year-old college student is a diminishing commodity and because the greatest demand for further educational opportunity comes primarily from adults with at least a high school education," she said.

Today, more than 80 percent of people between 20 and 24 are high school graduates. This represents a significant increase over the number of their parents and grandparents who earned high school diplomas.

And the more formal education an adult has, Cross said, the more likely he or she is to seek additional education. A college graduate, for example, is about eight times as likely as a high school dropout to participate in adult education.

But adults seeking new learning experiences are not

limited to those enrolling in colleges. In the 1970's, Cross pointed out, the number of adults attending adult schools, employer-sponsored training programs, or classes sponsored by churches, community organizations and similar groups increased three times as fast as their numbers in the population.

While many adults pursue learning for personal satisfaction, others need it to keep up with technological advances in their field.

"This means that no education will last a lifetime," Cross said. "In many career fields the rate of obsolescence is now pegged at between five and ten years."

The tendency of states and professional licensing agencies to mandate continuing education for professionals, from accountants to

veterinarians, is another sign of the need for lifelong learning. In California, for instance, certified public accountants must take 80 hours of additional education every two years in order to retain their licenses.

Cross said that after a long history of moving steadily toward a linear life plan in which all life

7\*The STing\*Monday, January 14, 1980

had been divided into three full-time phases of education for the young, work for the middle-aged and enforced leisure for the elderly, things appear to be changing.

"Now people from all walks of life seem to be opting for a blended life plan that permits learning, work and leisure to go on concurrently," she said.

## PLACEMENT

### CAREER NIGHT

JANUARY 24, 1980  
6:30 PM

STUDENT CENTER ROOMS 119 and 120

### ALCOA

ALCOA will host a career information program and social on Thursday, January 24, for the seniors in the EET, MET and IET departments. The faculty of these departments are invited to attend.

Several representatives will present information about the company and complete descriptions about jobs and work responsibilities will be given. Students will have an opportunity to visit with a representative from each work area.

ALCOA will interview graduates on Friday, January 25. Please sign-up for interviews by noon on January 24.

### PLACEMENT AND CO-OP BULLETIN

Some of the interviews scheduled this quarter as follows:

- Tues, Jan 15--Floriday Power & Light Co. - EET
- Wed, Jan 16--Bayly Corp. - IET, TET, AMET
- Wed, Jan 16--Southern States, Inc. - MET, EET
- Thurs, Jan 17--Babcock & Wilcox - EET, MET
- Tues, Jan 22--U.S. Navy - all degrees
- Tues, Jan 22--Reliance Electric Co. - EET, MET
- Thurs, Jan 24--Oxford Industries - IET, TET, AMET
- Fri, Jan 25--Newport News Shipbuilding - EET, MET

Co-op interviews to date for the quarter as follows:

- Tues, Jan 29--Southwire Co. - CET, EET, IET, MET
  - Mon, Jan 28--Georgia Department of Transportation - CET
- Sign up for these interviews in Co-op office, Room 121.

BSET/MT

To make a  
high angle

CAREER ENTRY

talk to the  
company that  
knows all about  
entries

to tell you about one of the most sophisticated and rarified yet solid environments in the entire aerospace industry. Our representatives will outline our long history of "science-factual" achievements in inertial guidance systems, navigation, communications and airborne computers--and tell you how we can launch you on the steepest possible career trajectory.

See your Placement Office for a preliminary company profile and sign up for a one-on-one interview--today.

Kearfott  
is coming  
on  
Thursday,  
January 31

**Kearfott**

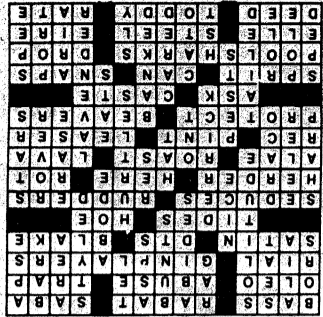
a division of The SINGER Company

An equal opportunity employer, m/f, who creates opportunities.



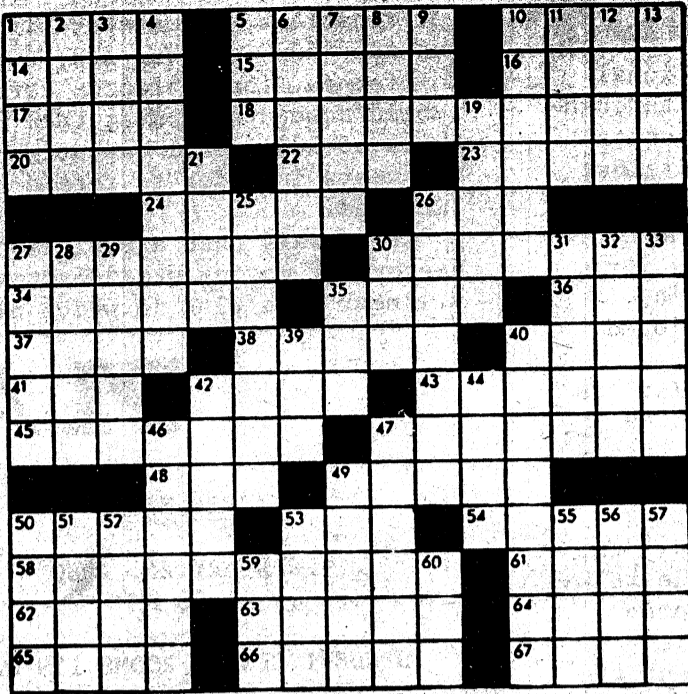
- ACROSS**
- 1 Fish
  - 5 Moroccan city
  - 10 Philippine plant
  - 14 Margarine
  - 15 Maltreat
  - 16 Snare
  - 17 100 dinars
  - 18 Card lovers: 2 words
  - 20 Joined: 2 words
  - 22 Sot's problem: Abbr.
  - 23 Hockey great Toe
  - 24 Ebb and rip
  - 26 Garden tool
  - 27 Tempts
  - 30 Helms
  - 34 Animal tender
  - 35 Hither
  - 36 Decay
  - 37 Wings
  - 38 Meat cut
  - 40 Aa
  - 41 Tape: Abbr.
  - 42 Pub measure
  - 43 Renter
  - 45 Safeguard

**UNITED Feature Syndicate**

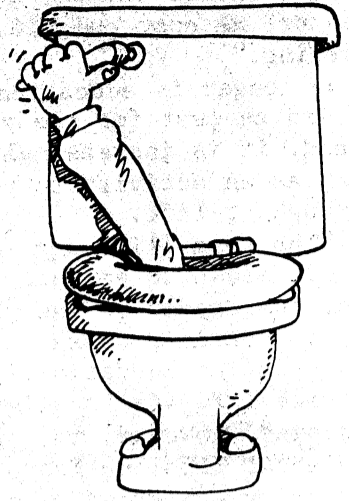


- 47 Animals on Can. nickels
- 48 Inquire
- 49 Class
- 50 Spar
- 53 Is able
- 54 Breaks
- 58 Snooker experts: 2 words
- 61 Fall
- 62 French pronoun
- 63 — wool
- 64 Ireland
- 65 Exploit
- 66 Drink
- 67 Proportion

- 19 Dwelling
- 21 Fine
- 25 Crane
- 26 Dashes
- 27 Astute
- 28 Fisherman
- 29 Constellation
- 30 Thing: Law
- 31 Wipe away
- 32 Wanderer
- 33 — and Stripes
- 35 Chapeau
- 39 Can. prov.
- 40 Purple
- 42 Annoyers
- 44 Dines
- 46 Followed
- 47 Depended
- 49 Worried
- 50 Raced
- 51 Shaft
- 52 Function
- 53 Roman soldier
- 55 Melody
- 56 Harbor
- 57 Graf von —: Ger. admiral
- 59 U.S. Pres.
- 60 Sneaky



**TODAY'S CROSSWORD PUZZLE**



**CLASSIFIEDS**

CLASSIFIEDS CAN REALLY PAY OFF FOR YOU. THE STING IS OFFERING ALL STUDENTS, FACULTY, AND ADMINISTRATION A CHANCE TO RUN CLASSIFIEDS WITHOUT ANY COST TO THEM; FREE!!!! LEAVE YOUR AD IN THE BOX OUTSIDE OF THE STING-LOG OFFICES BY WEDNESDAY AT NOON FOR YOUR AD TO RUN THE FOLLOWING MONDAY.

**New & Recommended**

**On Human Nature**, by Edward O. Wilson. (Bantam, \$3.95.) Is all human behavior genetically predetermined?

**Sideshow**, by William Shawcross. (Pocket, \$2.95.) Kissinger, Nixon and the destruction of Cambodia.

**The Praise Singer**, by Mary Renault. (Bantam, \$2.95.) Splendor, power and intrigue in ancient Greece: fiction.

Association of American Publishers

**NEVERMORE..**



**calculators and stereos**

DON'T BUY STEREO OR CALCULATORS BEFORE CHECKING OUR PRICES!  
CAMPUS AUDIO IS ATLANTA'S LARGEST STEREO DISCOUNT HOUSE!



**SPEAKERS**

- Akai
- Altec
- Bic
- Cerwin Vega
- Dynaco
- J B L
- Marantz
- Micro Acoustics
- Chm
- Phase linear
- Philips
- Pioneer
- Technics
- Design Acoustics
- Jensen
- Ultralinear
- Infinity
- Kenwood
- K L H
- Magna
- J V C
- Sansui
- Sanyo
- Bolivar

**TAPEDECKS**

- J V C
- Marantz
- Sharp
- Technics
- Kenwood
- Sony
- Dual
- Teac
- Sansui
- B I C
- Hitachi
- Philips
- Pioneer
- Optonica

**RECEIVERS**

- Marantz
- J V C
- Kenwood
- Sansui
- Optonica
- Sanyo
- Onkyo
- Sony
- Hatachi
- Akai
- Philips
- Lux
- Panasonic

**TURNTABLES**

- B I C
- Dual
- B S R
- J V C
- Philips
- Technics
- Sony
- Kenwood
- Sanyo
- Akai
- Hitachi
- Pioneer
- Empire

**COMPONENTS**

- A D C
- Akai
- B I C
- Bose
- Burwin
- Cerwin Vega
- Optonica

- C M Labs
- D B X
- Dynaco
- Garrard
- Hitachi
- J V C

- Sanyo
- Kenwood
- Lux
- Marantz
- Onkyo
- Phase Linear

- Philips
- Sansui
- Sharp
- Technics
- S A E
- Rotel



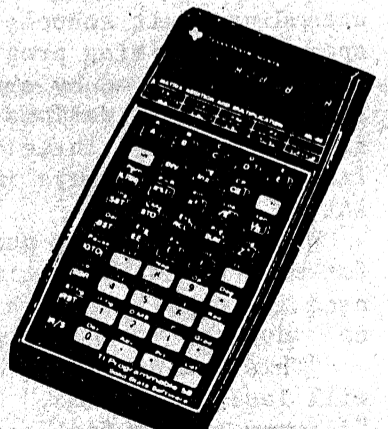
**CARTRIGES**

- Empire
- Audio Technica
- Fickering
- Stanton
- Sonus
- Ortafon
- Micro Acoustics

**CALCULATOR SALE:**

H.P. 31E	\$49.88
H.P. 33E	\$84.88
H.P. 32E	\$64.88
H.P. 37	\$78.88
H.P. 38	\$117.88
H.P. 41C	\$289.88
H.P. 29C	\$169.88
H.P. 67	\$359.88
T.I. 25	\$29.88
T.I. 40	\$29.88
T.I. 50	\$39.88
T.I. 55	\$39.88
T.I. 57	\$59.88
T.I. 58c	\$109.88
T.I. 59	\$239.88
T.I. Pc-10c	\$169.88

WE STOCK ALL T.I. AND H.P. ACCESSORIES TOO!



**SUPER CAR STEREO SYSTEMS**

- Pioneer
- Sanyo
- Marantz
- Audiovox
- Blaupunct
- Motorola
- Panasonic
- Fultron
- Craig
- Sharp

522 COBB PKWY.  
(NEAR SO. TECH)  
432-6163 or  
432-4444

62 THIRD ST. ATL  
(NEAR GA. TECH)  
892-4444

**campus audio**

REMEMBER "WE, GIVE PRICE QUOTES OVER THE PHONE"