

Vol. 10 No. 2 | Spring 2013



flourish



En Pointe:
Department of Dance
Expands Facilities...p. 13

Zuckerman Museum of Art
Scheduled to Open in October
2013...p. 23

**From Ireland to
Morocco to Taiwan:**
Connecting Globally with
the Arts...p. 8

K E N N E S A W S T A T E U N I V E R S I T Y
C o l l e g e o f t h e A r t s

from the heART



Dr. Ivan Pulinkala
Interim Dean
College of the Arts
2012-2013

Photo by Robert Pack

We are proud to be one of the most dynamic communities of artists, scholars, and higher education professionals in the Southeastern U.S. region, offering nationally accredited and distinguished programs in Art and Design, Dance, Music, and Theatre & Performance Studies.

Our faculty and staff represent a diverse group of highly accomplished educators committed to the success of our students through transformative experiences on campus and beyond. Through a contemporary liberal arts curriculum and professional degree programs, our students develop the skills necessary to be competitive in a rapidly changing global and technological environment. We invite you to share in the more than 175 arts events, concerts, and exhibitions produced at Kennesaw State University every year that celebrate our commitment to disciplinary, cultural, artistic, and intellectual diversity.

Our partnerships and collaborations with leading arts organizations and educational institutions regionally, nationally, and internationally make the College of the Arts at Kennesaw State University a dynamic contributor to economic, social, and political development. Our faculty, staff, and students are actively engaged in our local community and are vital to the cultural core of the metro-Atlanta area. We invite you to visit our campus, experience our rich traditions of innovative art-making, and become a part of our thriving community of celebrated scholars and artists.

Dr. Ivan Puinkala, *Interim Dean, KSU College of the Arts*

T of contents TABLE

*Flourish is a publication
of the College of the Arts at
Kennesaw State University.*

College of the Arts
Kennesaw State University
Box #3101
1000 Chastain Road
Kennesaw, GA 30144
770-499-3214
www.kennesaw.edu/arts/flourish

Daniel S. Papp
President

W. Ken Harmon
*Provost/
Vice President for Academic Affairs*

Ivan Pulinkala
*Interim Dean, College of the Arts
Chair, Department of Dance*

Samuel Grant Robinson
Assistant Dean, College of the Arts

Michael Alexander
Interim Director, School of Music

Karen Robinson
*Interim Chair,
Theatre & Performance Studies*

Ivan Pulinkala
Chair, Department of Dance

Joe Thomas
*Chair,
School of Art and Design*

Kathie Beckett
*Director, Marketing and
Communications*

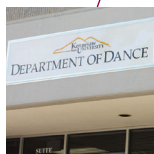
Joshua Stone
Designer

Selina Walker
Assistant Designer

Tracie L. Hinnant
Photographer

Shira Kerce
Writer/Editor

Brenda Curtis
Production Assistant



**Kennesaw State's
Department of Dance**
expands with NEW facilities

12



**Kennesaw State
Festival of New Music**
brings BIG names to campus

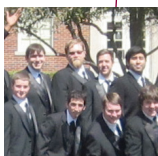
14



Campus

Scene It
Student Spotlight
In the College
Around the World
In the Classroom
Faculty Spotlight

4



Community

Alumni Spotlight
Back to Campus
Alumni Notes
Celebrating the Arts
Donor Spotlight
Thriving Together

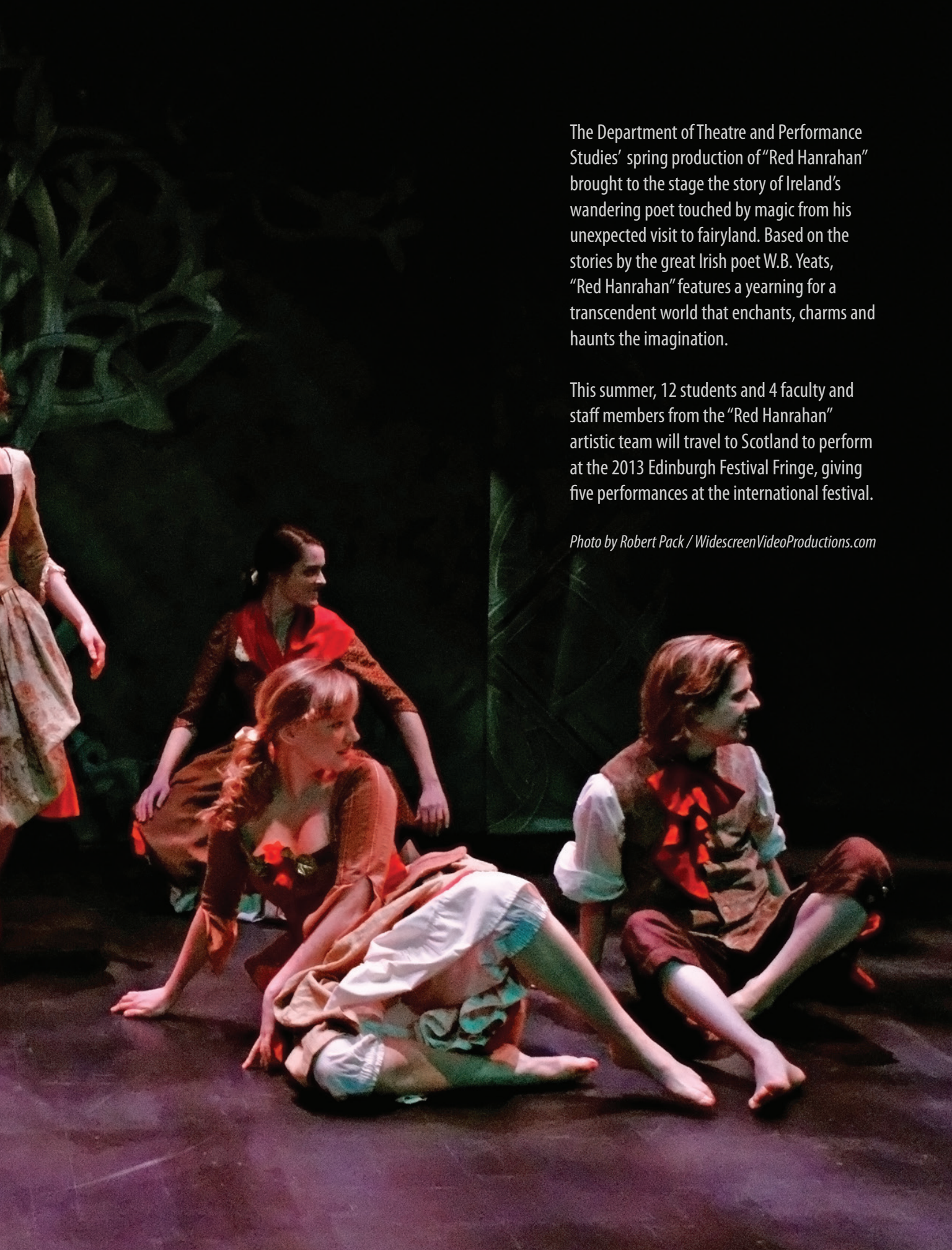
20

On the Cover:

Michael Alexander conducts the Georgia Symphony Orchestra featured at the KSU 2012 Starlight Series. To learn more about the 2013 Series, please see page 24 or visit www.kennesaw.edu/arts/starlight.



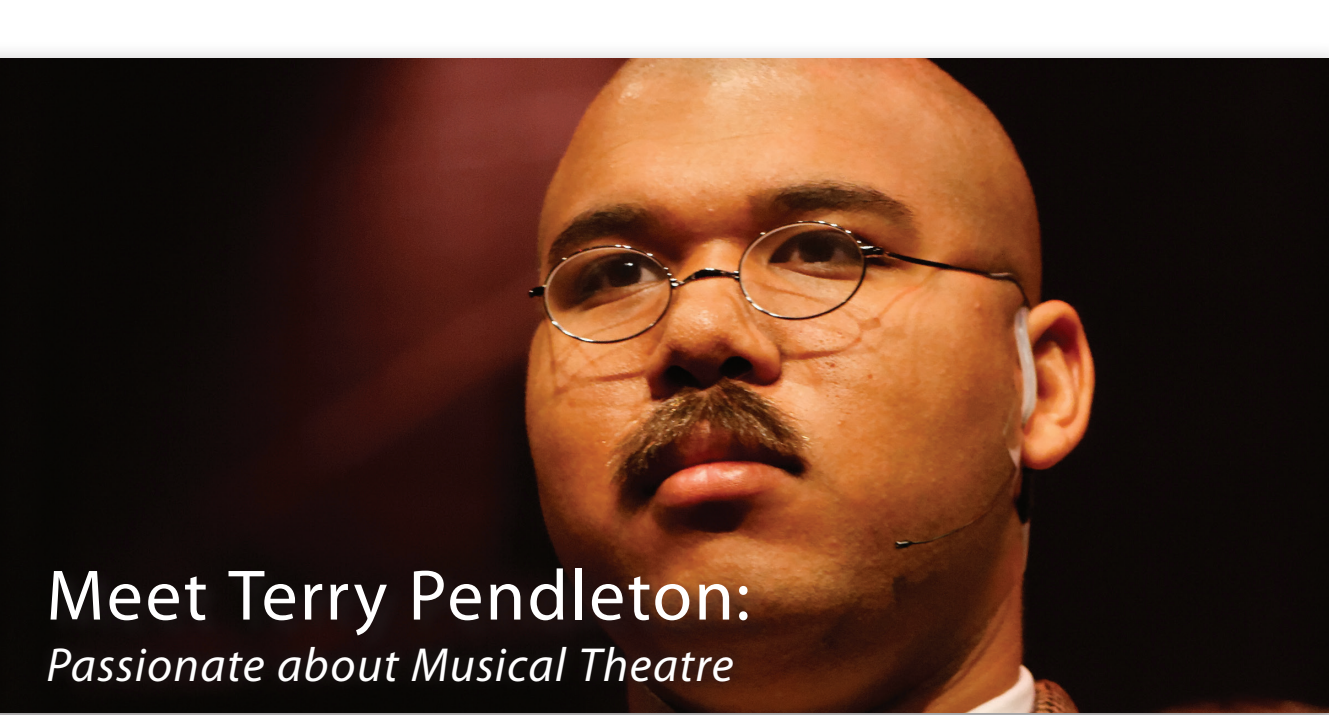
scene it



The Department of Theatre and Performance Studies' spring production of "Red Hanrahan" brought to the stage the story of Ireland's wandering poet touched by magic from his unexpected visit to fairyland. Based on the stories by the great Irish poet W.B. Yeats, "Red Hanrahan" features a yearning for a transcendent world that enchants, charms and haunts the imagination.

This summer, 12 students and 4 faculty and staff members from the "Red Hanrahan" artistic team will travel to Scotland to perform at the 2013 Edinburgh Festival Fringe, giving five performances at the international festival.

Photo by Robert Pack / WidescreenVideoProductions.com



Meet Terry Pendleton: *Passionate about Musical Theatre*

Robert Pack

By Tanya Thompson Brown

Terry Pendleton was really involved in sports at his small private high school in Norcross, Ga. until positive peer pressure persuaded him to try out for his high school's musical production of "Big River." He credits that experience with helping him realize "this is what I need to be doing," and football, basketball and baseball fell by the wayside when he joined his high school chorus and musical theatre group to explore this new passion.

Terry had already been accepted at another university when family friend and Adjunct Instructor of Communications, Warren "Rhubarb" Jones, gave Terry and his family an unofficial tour of KSU's campus. Terry fell in love with the campus and the atmosphere, and recalls thinking, "this is what I want."

Although Terry only had three years of high school musical theatre experience prior to enrolling at KSU, that didn't stop him from finding success in KSU's Department of Theatre & Performance Studies. Terry landed the lead singing role of Archibald Craven in KSU's production of "The Secret Garden," played Herr Schultz in "Cabaret" and performed as Lord Mountararat in "Iolanthe." Terry says taking on the lead in "The Secret Garden" was challenging; it was a major role in his first university production, and he had a large singing part with a complex musical score. Nevertheless, he says, "I'm so glad I was a part of that experience."

Artistic Director and Associate Professor Dean Adams, who taught Terry in class and directed him in both musicals, says, "Terry is one of the most decent human beings I know; if he has a diva side, I haven't seen it. He has a big stage presence and a nice sense of humor. He is always prepared, and with each role, he has become more comfortable."

Because of his strong vocal skills, Terry was also selected into the Musical Theatre Ensemble, an audition-only group that receives private voice lessons and holds weekly workshop

meetings. "Only a handful of students can do that because the workload is heavy and the musical genres are very different," Adams explains. "Terry has a gorgeous tenor voice that has gotten very strong in the last two years."

Terry credits Adams with helping him to grow as a performer. "He has helped me realize there is a lot more in me than I think there is. He pulls it out of me, which is really excellent, but also terrifying, because when you discover something in yourself that you had no idea was there, you have to think 'why did I not see this?' and wonder where it is coming from."

In addition to his theatre performances, Terry also recently sang with the KSU Men's Ensemble at the National American Choral Directors Association Convention in Dallas, Tex.

As graduation gets closer for this junior, Terry thinks he will probably stay in the Atlanta area for a few years, but admits that he is intrigued with the idea of doing an internship with the Disney College.

Although it was an impromptu campus tour that led Terry to KSU, he has been thrilled with his experience here over the last three years. "We have an amazing theatre program and everyone is so supportive." ☺

STUDENT SPOTLIGHT



Robert Pack

in the **COLLEGE**



KAREN ROBINSON

Karen Robinson, with KSU since 2000, was named Interim Chair of Theatre & Performance Studies (“TPS”) in Jan. 2013. She anticipates that TPS will continue to grow in stature and contribute to the theatre ecology in metro Atlanta. “There has been a tipping point recently,” Robinson explains, “and the involvement of TPS students and alumni in the local theatre scene has exploded. KSU’s partnerships and associations with local theatre groups include Georgia Shakespeare, 7 Stages, Alliance Theatre, Serenbe Playhouse, The Center for Puppetry Arts, Georgia Ensemble Theater, Fabrefaction Theatre Company, and Theatrical Outfit.”



HARRISON LONG

A professor at KSU since 2005, Harrison Long was named Interim Chair of the School of Art and Design effective July 1, 2013. He said, “The School of Art and Design has earned a stellar reputation across the region for achievement in art, design, art history and arts education. As a community deeply committed to academic achievement and creative innovation, we’re poised to develop even greater collaborations across campus, in our community and globally.”



MICHAEL ALEXANDER

Michael Alexander, with KSU since 2004, was named Interim Director of the School of Music in Jan. 2013. His vision for the School of Music is to produce the cultural leaders of the next generation. “Our program’s remarkable growth combined with our forward-thinking faculty will solidify us as a leader in the region for how to educate musicians for the 21st century,” Alexander explains. “We are educating students how to embrace what a modern musical career looks like as a teacher and performer led by faculty that display this model by teaching while being active performers and researchers in our community.”



courtesy of Patricia Poulter

COTA HAS A NEW DEAN

Patricia “Patty” S. Poulter has been selected as the new dean of the College of the Arts, effective July 1. Poulter will succeed Interim Dean Ivan Pulinkala, who took office Feb. 1 after Joseph Meeks retired after serving 14 years as dean.

“I am honored to have been selected and eagerly look forward to becoming part of Kennesaw State University’s College of the Arts,” said Poulter. “I could tell when I stepped foot on this amazing campus that there was an energy and passion for the arts, and I can’t wait to get started.”

Poulter has served as associate dean for the College of Arts and Humanities at Eastern Illinois University since 2009. Prior to joining the Eastern Illinois University music education faculty in 1994, Poulter was a teaching assistant at the University of Illinois at Urbana-Champaign. She holds a bachelor’s degree in music education and a master’s in conducting from Eastern Illinois University and she earned an Ed.D. in music from the University of Illinois at Urbana-Champaign.



Dance in Taiwan

With much excitement and anticipation, Kennesaw State University's Department of Dance is launching its first education abroad experience. In collaboration with the National Taiwan University of Arts (NTUA), KSU dance students studied classical ballet, modern dance, basic Chinese dance and the Mandarin language during a Maymester at NTUA. Sandra Parks, assistant professor of dance, spearheaded the program and travelled with the nine students to the Taiwanese capital of Taipei May 10-25, 2013.

While in Taipei, the dance students engaged in a language course and dance technique classes at NTUA, which Parks says is "well-known in Taiwan and among the entire Asian population for outstanding technique levels." The program curriculum also included visits to cultural sites and attendance at several professional dance concerts of internationally known companies.

"Our students are very versatile and they are open to explore new techniques, ideas and concepts," Parks says. "While any artist would be intimidated to learn a brand-new technique, our students were so excited and ready to learn." ☺



Kennesaw State University's Department of Dance has launched its first education abroad experience in collaboration with the National Taiwan University of Arts. Shown above, the capital city of Taiwan, Taipei.

Theatre in Ireland

Students in the Department of Theatre & Performance Studies are preparing for a four-week program at The Gaiety School of Acting in Dublin, Ireland from July 1-26, 2013. Professor John Gentile is directing the program and says, "The education abroad experience offers students the opportunity to learn what it means to be a global citizen." Gentile says participating in an education abroad program also helps deepen and expand a student's understanding of the world and the complexities and differences of other cultures.

During the Irish Drama Summer Intensive at The Gaiety School of Acting, students will engage in a series of practical workshops in acting, voice and movement work and text analysis, along with seminars on Irish cultural history, according to Gentile. The course will focus on the plays and playwrights that have made Ireland famous in theater, including works by John Millington Synge, Sean O'Casey, Samuel Beckett and Brian Friel. Students will also have the opportunity to visit important Irish cultural sites. ☺

Students enjoyed the Irish Drama Summer Intensive at the Gaiety School of Acting.



John Gentile



The Arts in Italy

Students from throughout the College of the Arts, as well as other colleges within KSU, will have an education abroad opportunity in Montepulciano, Italy, during two summer sessions: May 16-June 23 or June 27-August 4. Located in the picturesque region of Tuscany, the Montepulciano program will allow students the opportunity to take a variety of unique courses, including “Art in Italy,” “Theatre Appreciation & the Italian Renaissance,” “Drawing in Tuscany” and “Principles of Acting & the Commedia Style.”

In addition to living and studying within the medieval-walled town of Montepulciano, students will also have the exciting chance to

travel through twice weekly field trips to Rome, Florence, Siena, Pisa and other local Italian cities. On the weekends, students will be able to further their Italian cultural immersion through activities such as swimming in the Mediterranean, hiking in the Alps and tasting authentic Italian cuisine.

Kennesaw State recently signed a lease for property in Montepulciano that will provide a permanent home for this education abroad program beginning in fall 2014. “This represents a major milestone for Kennesaw State’s international initiatives and our commitment to providing students high-quality, global learning opportunities,” said KSU President Daniel S. Papp. ☞☞

Other International News

Han Lixun, one of China’s top set designers and art directors, visited Kennesaw State University in March as part of a tour of several U.S. universities. Lixun was the chief designer and art director for the 2008 Beijing Olympic Opening Ceremony, and he shared with students the ins-and-outs of working behind the scenes with some of the most well-known figures in the contemporary art world.

Several visual arts professors from Kocaeli University in Istanbul, Turkey visited Kennesaw State in November 2012. The visiting professors taught workshops in painting, sculpture and ceramics and presented a lecture on Contemporary Turkish Art History. Turkish student artwork was exhibited in the halls of the Visual Arts Building through the end of the year.

KSU Professor of Art Lin Hightower is on sabbatical and working as a volunteer art designer and business consultant with Craft Collectives in Nepal, India, Egypt and Morocco. Hightower is chronicling her experiences at [facebook.com/LinHightowerJourneys](https://www.facebook.com/LinHightowerJourneys). ☞☞





Shane McDonald

Kristine Hwang: *Leading Graphic Designers*

By Tracey Cordle

In the Kennesaw State University School of Art and Design, Professor Kristine Hwang teaches graphic design courses, assists in managing graphic communications and supervises undergraduate research endeavors. Hwang pours her extensive knowledge and passion for graphic design into innovative approaches and creative educational opportunities for her students.

The field of graphic design is constantly changing in response to new technology, so Hwang strives to introduce her students to new, up-to-date design approaches. “KSU students are eager to learn and take on a challenge,” she says, “and they are good graphic designers too!” Hwang proudly adds that several of her students are already working as freelance designers and receiving job offers for their web design skills. Hwang is familiar with freelance work, as she also freelances for a variety of design clients. “I do some non-profit work and community engagement projects,” she says.

Outside of her typical classroom and work-related tasks, Hwang is thrilled to interact with students, faculty and the community through KSU’s commitment to global and cultural engagement. “I helped coordinate Korean Heritage Day in January, and I am planning and preparing for the ‘Year of Japan,’” Hwang says. KSU will recognize the ‘Year of Japan’ in the 2013-2014 school year, and Hwang’s contributions are enhanced by her recent participation in the 2013 International Design Principle & Practice Conference in Chiba, Japan in January.

“KSU encourages students to study different cultures,” Hwang says, adding that current visual arts students have a heightened interest in learning more about Asia. “I have fifteen gigabytes of pictures, I’ll share them with whomever is interested,” she

says, laughing about the memories of her January trip to Japan. She hopes her experiences, photographs and contributions will make the culture more accessible to students interested in researching Eastern art.

Hwang says KSU’s undergraduate students want to learn on their own and pursue new discoveries and methods, especially the students working with her on an undergraduate research project entitled “Mobile Technology Enhances Learning: Researching and Creating an Interactive eBook About Typography.” Hwang and her team of four students —Daniele Dewendt, Emily Seed, Greg Thye and Laura Cerlin— are part of the Faculty Learning Community (FLC) on Publishing Undergraduate Research. “This has been a year-long project,” says Hwang, explaining that the team will submit their paper to several publications and competitions.

As she continues to thrive at KSU, Hwang speaks highly of her colleagues: “The professors here work together and help each other grow in order to give our best to the students. It is a collaboration where we work together and support each other.” Hwang’s dedication to her students’ success reflects her encouraging personality and commitment to furthering the field of graphic design. ☺

Professor Hwang explains techniques to a group of students.



Shane McDonald

FACULTY SPOTLIGHT

Art & Design

– Faculty/Staff

Laura Bell had two solo exhibitions in Feb. and March: “Gurgle and Seep” at Whitespace Gallery and “Delicate Intricacies” at GCSU, Blackbridge Hall Gallery.

Sandra Bird appeared on the Atlanta Interfaith Broadcasters series “Meeting Your Muslim Neighbor” on Jan. 7 for a segment titled “Islamic Art.”

Ming Chen received a Foundation Prize for Publication for her textbook “Visual Literacy for Theatre.”

Valerie Dibble will have an article titled “Boyd Saunders: Life, Prints and Philosophies” published in the Winter 2013 edition of the Contemporary Impressions international print journal. She is also presenting on Green Practices on the Art Studio at the American Print Alliance’s International Dialogue Day in April. She is also exhibiting in “Flight” at Hartsfield Jackson International Airport.

Natasha Lovelace Habers was appointed Assistant Department Chair of First-Year Programs.

Kristine Hwang presented at the 2013 Hawaii International Conference on Education in Honolulu, Hawaii, Jan. 6-8 and traveled to the 7th International Conference on Design Principles and Practices in Chiba, Japan, March 6-8.

Matt Mitros was selected as the Ceramics Monthly Magazine’s “2013 Emerging Artist” and exhibited in 20 invitational and juried exhibitions in 17 states. He won 1st Place Juror Award at the “Metro Montage” exhibition held at the Marietta-Cobb Museum of Art and Honorable Mention Award at the “Functional/Dysfunctional” exhibition held at Morean Arts Center in St. Petersburg, Fla.

Shebbie D. Murray graduated from Ashford University with a Master of Arts in Organizational Management in Oct. 2012.

Kristen Seaman presented papers at the College Art Association’s annual meeting in New York in Feb. and the 2013 Annual Meeting of the Archaeological Institute of America in Seattle. Her research was also presented at the Craft and People conference at the British Museum in London.

Joe Thomas and **Diana McClintock** presented papers at the 33rd Congress of the Comité International D’Histoire de L’art (International Congress of Art History) in Germany in July, 2012. They were also involved in the College Art Association’s annual meeting where McClintock organized and co-chaired a panel on art criticism in the cyber-age and Thomas spoke as part of a panel on the plight of contingent faculty.

Students/Student Groups

Lauren Bearden presented her paper “Hybridization and Nabataean Identity in the Khazneh Façade at Petra” at the 2013 Annual Meeting of the Archaeological Institute of America in Seattle, Wash. in Jan. 2013; she published her paper “Repatriating the Bust of Nefertiti: A Critical Perspective of Cultural Ownership” in Kennesaw Journal of Undergraduate Research 2.1 (2012).

Lauren Bearden, Jane Custer and **Judi Murphy** presented art history papers and Blair Becker, Guillermo Dominguez, Ryan Hartley, Holly Lacour, Taylor Kanani Tolbert and Laura Vela exhibited artwork at the 2013 “Collage: A College Art Colloquium” at Agnes Scott College in March. Lauren Bearden won the award for the best paper presented at the Colloquium. Laura Vela received a juror’s choice award.

Kristina Hamm and **Lucas Jankovsky** were selected to participate in the “Vase Forms” national juried exhibition.

Joani Inglett was one of three students nationally to be awarded the prestigious 2013 Regina Brown Undergraduate Student Fellowship funded through the National Council on Education in the Ceramic Arts. Her artwork was selected in three national juried exhibitions and she was also selected to participate in the 6-week work-study program at Arrowmont School of Arts and Crafts during summer 2013.

Lucas Jankovsky received a summer 2013 scholarship to attend a workshop at the Arrowmont School of Arts and Crafts.

Maria Londono, Tyree Hodo, Dalia Hedi-Fific and **Alex Swan**, along with Professors **Sandra Bird** and **April Munson**, partnered with the Marietta Center for Advanced Academics to update their science lab with murals.

Sam Russo was selected to participate in the national juried exhibit “2013 Artists of the 21st Century” held at the West Tennessee Regional Art Center.

Laura Vela presented a talk and presentation for “Critical Juncture” at Emory University.

KSU Printmakers exhibited “Hand Pulled Images” at Acworth’s Gallery 4463 in April. They were also invited to participate in Print Big! 2013 on April 13.

KSU Printmaking department curated an installation exhibit in the Fine Arts Gallery titled “A Paper Affair” open through June 7th.

Dance

– Faculty/ Staff

Andrea Miller and members of her company, Gallim, taught master classes to dance students on Feb. 14-15 as a part of the Department of Dance’s partnership with the Rialto Center for the Arts.

Sandra Parks’ original choreography, “Rebuild,” was chosen at ACDF in Greensboro, N.C. in March 2013 as a Gala Selection.

Music

– Faculty/Staff

Leslie J. Blackwell was selected conductor for the 2013 Georgia All-State Men’s Chorus held in Savannah, Ga. on Feb. 12-13.

John N. Culvahouse was elected to the membership of the America Bandmasters Association at the 79th Annual National Convention held in Tampa from March 6-9. He also served as a guest conductor for the Honor Band at Delta State University in Jan. and the Band Clinic at the University of South Carolina and the Wind Ensemble at Southern Illinois University in Feb.

David Thomas Kehler recently served as conductor, with Michael Alexander, of “New Blood,” by Peter Gabriel on Jan. 10. Kehler was inducted into the Georgia Chapter of Phi Beta Mu in March; he was also a featured conductor for JanFest 2013 at the University of Georgia and for Shelby County High School Honor Band; he served as adjudicator for the Charleston Music Festival, Music in the Parks Festival, Festivals of Music and Six Flags over Texas Music Festival in April.

Students/Student Groups

Emily Ahlenius has been accepted at the University of Wisconsin-Milwaukee on a scholarship.

Grace Kawamura has been accepted to four graduate schools and has been offered a full scholarship of \$20,000/yr to attend the University of Michigan.

Rachel Keplin has been accepted to two graduate schools and has been offered a full tuition remission plus stipend to be a teaching assistant at the University of Tennessee.

Katelyn King will attend McGill University in Canada with a \$14,000/yr scholarship and is a finalist for a Fulbright Award.

Katie Lawrence has been accepted to two schools in England including the University of Leeds.

Jennifer Olenic has received an assistantship and full-tuition scholarship to attend graduate school at Mercer University.

KSU Wind Ensemble premiered a new work commissioned by KSU by Michael Markowski on Feb. 14 during KSU’s Festival of New Music. The Ensemble also performed Avelynn’s Lullaby by Joel Puckett on WABE 90.1 Summer Winds in Sept. 2012 and performed with special guest conductor Peter Witte in April.

Theatre & Performance Studies

– Faculty/Staff

Jane Barnette was accepted to attend the 2013 Mellon School of Theater and Performance Research at Harvard University, to be held in Cambridge, Mass. from June 3-14.

Jamie Bullins was costume designer for “Bloody Bloody Andrew Jackson” at Actor’s Express in Jan. and “Tales of Edgar Allan Poe” at the Center for Puppetry Arts in Feb.

Renee Jamieson is stage managing the world premiere of “Apnea” at Dad’s Garage Theatre Company from April 26-June 1.

Charles Parrott has been accepted to present a paper at the Ezra Pound International Conference in Dublin, Ireland in July. He has also been selected as the Humanities Scholar for 2014 Madison-Morgan Cultural Center’s “Do Tell” Storytelling Festival.

– Students/Student Groups

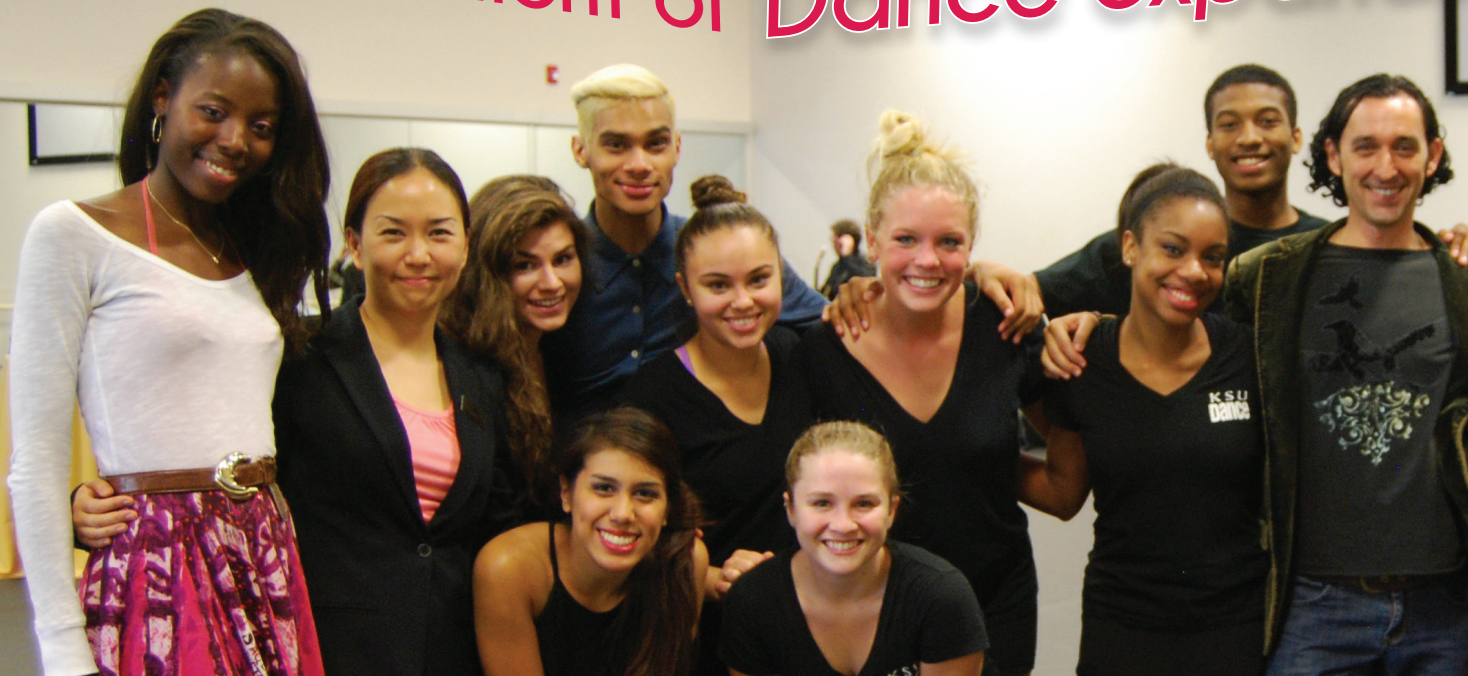
Megan Jance, Damian Lockhart and **Kelsey Medlin** are participating in the Center for Puppetry Arts’ summer intern/understudy program for the upcoming production of “Dr. Seuss’s The Cat in the Hat.”

Lauren Rondone and **Jordan Wardach** were awarded 2nd place in Barbizon scene design and 2nd place in Barbizon lighting design, respectively, and both received the Stagecraft Institute of Las Vegas Award for Excellence in Collaboration for the KSU production of “Cabaret” at the Kennedy Center American College Theater Festival Region IV.

KSU Tellers presented an original devised performance at the Patti Pace Performance Festival at Georgia Southern University in Feb. and a panel discussion about their devising process at the Southern States Communication Association Conference in April.

Send your notes to arts@kennesaw.edu.

Kennesaw State's Department of Dance expands



Shira Kerce



Shira Kerce

By Shira Kerce

Kennesaw State University's newly formed Department of Dance recently completed the second phase of an expansion to its Chastain Pointe facilities. The Phase II Grand Opening and Open House was held on Sunday, May 5th and guests were treated to a tour of the new facilities.

The new facilities include a classroom, two dance studios, student lockers and a student lounge area, faculty and staff offices, a costume shop, a scene shop and a storage area for dance equipment.

According to faculty and staff, the new dance studios are equipped with state-of-the-art sprung floors and audio-visual equipment. One of the studios is the largest in the metro-Atlanta area.

The department's growth over the last few years has led to this current expansion as larger facilities became necessary to accommodate the growing number of dance students. First founded in 2005 as the Program in Dance (within the Department of Theatre & Performance Studies) and with only a dance minor, the program quickly grew to over 140 students.

In 2009, a dance major was added, and in 2012, the program became its own department in the College of the Arts.

Ivan Pulinkala, chair of the Department of Dance and founding director, says the expansion has been supported and funded by the University "in response to the program's exponential growth since its beginning. It is now the largest dance program in Georgia, and it has become a highly-selective, high-demand program, with over 100 majors auditioning every year for approximately 25 available slots." The KSU Dance Company has also achieved great success with national recognition during the National College Dance Festivals in 2008, 2010 and 2012.

"It is exciting to now have facilities that will support our success and growth and provide a home for the Department," Pulinkala says. Although Phase II is now complete, planning for Phase III will begin during the 2013-2014 school year. "As resources permit," Pulinkala explains, "we will continue to expand and complete the building."

In the future, The Department of Dance plans to add a master's degree program and gain accreditation from the National Association of Schools

with NEW facilities



Shira Kerce

Kathie Beckett

of Dance. The department will also host the KSU Dance Festival in spring 2014 and the American College Dance Festival Regional Conference in 2016.

The new world-class dance facilities will not only make all these new plans possible, but will also have a more immediate effect by providing a central location for all dance classes and rehearsals. Dance students will be able to meet and interact with their fellow dancers much easier now that they will all be in one place, rather than shuttling back and forth from the main campus.

Pulinkala says, "We are grateful to the KSU administration and our community partners who have recognized the potential of the Department of Dance and supported our growth with these incredible facilities. We look forward to our continued growth in the future as we become nationally recognized as a leader in dance education in the Southeastern U.S."

To learn more, please visit <http://www.kennesaw.edu/dance>. ☺

KSU Department of Dance honored at regional conference

By Shira Kerce

Kennesaw State's Department of Dance and Assistant Professor Sandra Parks were recently honored at the 2013 American College Dance Festival Association's Mid-Atlantic Regional Conference. Parks' choreography "Rebuild" was featured during the final night's Gala Concert, closing out the conference that was held at the University of North Carolina at Greensboro from March 13-16.



The conference featured 40 works by dance troupes from various universities in the region. Of these 40 pieces, 10 were chosen to be performed at the Gala, with Parks' piece serving as the final piece of the evening. The pieces were chosen by a panel of three adjudicators, all of whom are renowned dancers and choreographers.

"We are honored to have achieved our 6th ACDF gala selection in our short 8-year history," says Ivan Pulinkala, interim dean of the College of the Arts and chair of the Department of Dance. "Congratulations to Sandra Parks and the cast of 'Rebuild!'"

Parks adds, "An honor such as this is a great accomplishment for our students, and it validates what we do here in the Department of Dance."

Parks originally choreographed and premiered "Rebuild" at the Fall 2012 faculty dance concert, "Road Kill." "It is a contemporary pointe piece, featuring seven female dancers," Parks explains. "The idea for the piece came from deconstructionism and the idea that the imperfect can still be beautiful." While learning and practicing the piece, the dancers matured and developed greatly, says Parks. "It was evident by their performance and the positive feedback they received from the adjudicators that they put a lot of work into this performance."

In addition to performing in the gala concert, the conference also gave students the opportunity to attend classes, meet other student dancers and gain exposure to new dance teachers and teaching philosophies. "It was a great learning experience for both our students and the faculty who attended the conference," Parks says.

The students and faculty of the Department of Dance will now focus on developing pieces for next year's regional and national conferences.

KENN
FE
N



Artwork: Diana Banes

KENNESAW STATE FESTIVAL OF NEW MUSIC 2013

brings BIG names to campus

Festival celebrates new music and living composers

Kennesaw State University's 2013 Festival of New Music featured four nights of music and performances showcasing the talents of KSU faculty and students as well as impressive guest artists. The festival featured music exclusively from living composers and highlighted the works of guest composers David Lang and Michael Markowski.

The Dr. Bobbie Bailey & Family Performance Center served as the perfect venue for the unique concerts held Feb. 12-15, and Director of the Bailey Performance Center David Daly and Composer-in-Residence Laurence Sherr acted as Co-Artistic Directors for the festival. Both Daly and Sherr praise the turnout for the festival, with Daly calling it a great success. "The concerts were interesting and engaged the audiences with challenging and unfamiliar music," Daly says. "Almost all who were in attendance left with a distinct appreciation for what they experienced."

Some of the highlights of the festival were the unique collaborations that developed as guest artists worked and interacted with KSU faculty and students. "What emerged was an interactive spirit of collaboration that really became the theme of the festival," Sherr explains. "Continuing to provide these types of opportunities for our students to collaborate and interact with guest artists is absolutely a goal for future festivals," Daly says.

Guest artists' participation included three master classes, two lectures, one panel discussion, and private lessons to percussion and composing students. Composer David Lang worked with students in both a master class and through individual private sessions, and he remarked to Daly about how much he enjoyed the experience. "He enjoyed working with our student composers who are at the beginning of their composition careers," Daly recounts, "because he likes to point them in challenging directions and help them express their work in ways that may be outside of their current musical perspective."

"Both Lang and Markowski met with students and offered suggestions for making a living as a composer," Sherr explains. "They seemed to enjoy the opportunity to reflect on their own paths to success."

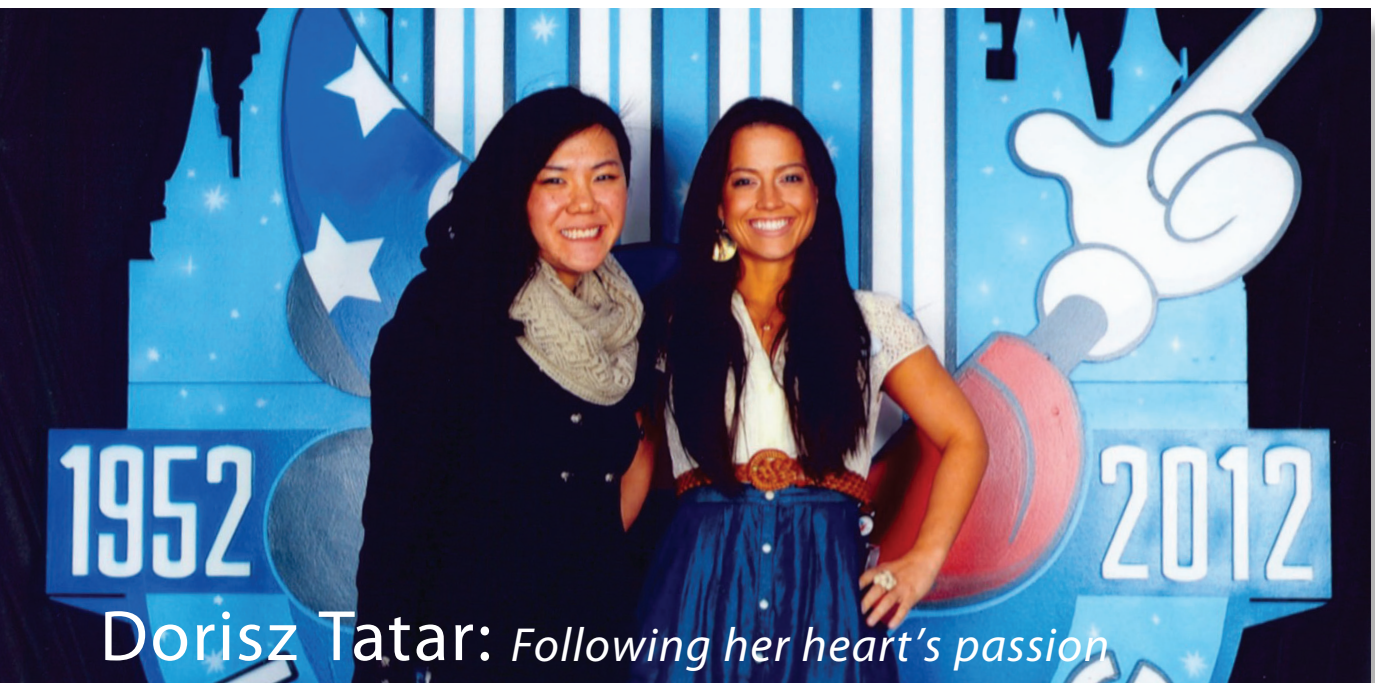
"All of the guest artists involved were incredibly generous in sharing their time and talents with our students, and they professed a genuine interest in contributing positively to their experiences as music students," Daly reflects. The guest artists, along with the School of Music faculty, staff and students, all worked together to facilitate and promote the events as well as to create amazing performances. "The spirit of working together truly permeated every aspect of the event," Daly explains. ↻

KSFNM by the numbers:

- 100+** students performed, including the KSU Orchestra, Wind Ensemble and Percussion Ensemble
- 27** pieces of music performed
- 21** composers represented, including 6 KSU student composers and 3 KSU faculty composers
- 14** faculty members performed
- 8** world premieres
- 5** guest artists, including 2 composers
- 4** concerts



Photos by David Caselli



Dorisz Tatar: *Following her heart's passion*

By Amanda Ray

*M*y heart has never failed me. You just have to believe in yourself,” explains Dorisz Tatar about her success in scenic design. Tatar says, “If I could leave my home and family in Hungary behind ten years ago when I barely spoke any English, and succeed, then believe me: you can do it, too!”

Tatar currently works for Walt Disney Imagineering in Glendale, Calif. She started out in the Color and Design department, where she painted models for Shanghai Disneyland and colored elevations for Disneyland Paris. Now, she is a portfolio coordinator for Hong Kong Disneyland.

After graduating from Kennesaw State University in 2008 with a bachelor of arts in Theatre & Performance Studies, Tatar moved to Los Angeles where she earned a Master’s Degree in Theatrical Design/Scenic Art from the California Institute of Arts (CalArts). In addition to this phenomenal achievement, Tatar was an intern with Warner Bros. Television. During her time there, she assisted the production designer on David E. Kelly’s series, “Harry’s Law,” featuring the popular actress Kathy Bates. She also designed productions for several USC short films and was a scenic painter for the network shows “Wipeout” and “Fear Factor.” Tatar was also a production designer on a commercial for “The Grove” and a Subway sandwich commercial, which was nominated for a student Emmy award in 2013.

Reflecting on her time as a KSU undergraduate, Tatar explains she is indebted to KSU for preparing her for success. “KSU has a great theatre program with the most wonderful and devoted professors in the country,” Tatar says. “They truly care about their students. I appreciate the opportunity I was given to gain experience in designing official theatre shows at KSU. There is no greater way to learn than getting your feet wet.”

She makes a special mention of Professor Ming Chen, explaining that Chen, “made me fall in love with scenic design. Her classes were always interesting because they challenged me to think outside the box. In addition, she would sacrifice her own free time to help me on projects.”

Chen explains that Tatar was an amazing student. “She was energetic, sharp, hardworking, inquisitive, capable and ambitious. She absorbs knowledge like a piece of sponge. She didn’t come to KSU to study design (she came to concentrate on acting), but she exhibited an innate skill for visual art and design in my Visual Imagination class, which is the entry level for designer students. I encouraged her to make good use of her gift and to consider studying design. As a result, she took destiny in her own hands by working to reach her goals and dreams with passion and conviction.”

Prof. Chen also suggests that if someone desires to be successful, she or he ought to “step out of their comfort zone by reaching out and being expressive and aggressive about what they really want in their career. Dorisz was the first one who took this advice and put herself into action. So, what I want my students to learn from Dorisz is that, first, they need to take destiny into their own hands and actively pursue their dreams. Secondly, if they know that they need to do something, do it right away, because waiting can be pricey.”

Tatar believes that everyone’s success story is different. She says, “We all have different pasts and different obstacles to overcome in order to reach our ultimate goal. Nevertheless, all the successful people have one thing in common, and that is passion. So, follow your heart!” ☺

ALUMNI NOTES

To submit a news item, send an e-mail to arts@kennesaw.edu

Art & Design

Jessica Blinkhorn (art, 2005) received a \$700 artist's grant from Change, Inc. Her newest performance art piece, "Assistance," premiered in Atlanta on July 26, 2012, followed by a performance in Baltimore, Md., where she attended the National FEMME Conference, Aug. 17-19, 2012.

Jessie Blowers (art history, 2012) was named KSU's Outstanding Senior.

Jeff Brown (art, 2009) and **Jeanne Harriman** (art, 2012) exhibited in their two-person show, "Mimic and Matter," at the Kibbee Gallery in Atlanta in Nov. 2012.

Shannah Dean (MAT, 2010) has taught art at McClure Middle School in Kennesaw and is currently teaching at Etowah High School. She is also an Adjunct Professor at Reinhardt University, having taught Art Appreciation and Introduction to Drawing.

Kelly McKernan Cavanah (art, 2009) had a piece "Concede" exhibited in "BLOOD," curated by the PRISMA Artist Collective and presented by WWA gallery in Culver City, California. She also curated the group show, "Linearity," at MINT Gallery in Atlanta from June 9-July 8, 2012.

Jeanne Harriman (art, 2012), **Nikki Starz** (art, 2010), **Aaron Atrip** (art, 2011) and **Ben Goldman** (art, 2006) were invited to exhibit work in "Little Things Mean a Lot: One Hundred Small Works of Art by One Hundred Contemporary Southern Artists" from Nov. 2012 to Jan. 2013.

Lara Cline Jeanneret's (art, 2005) design company Lara J Designs designed Throat Punch Ind's logos and t-shirt designs. Lara J Designs also designed the logo, flyers and brochures for the Sample Your City event in historic downtown Cartersville, Ga. in Oct. 2012. They were also named the Cartersville Downtown Development Authority's Merchant of the Month for Sept. 2012.

Marilynn Martin (art, 2012) created the mascot, Stemmie, for the Marietta Center for Advanced Academics.

Brandon McDonald (art, 2011) and **Mo Safavynia** (art, 2011) work at Danger Press as printmakers.

Shane McDonald (art, 1992) and **Johnathan Welsh** (art, 2011) participated in "The Imaginary Million" under the partnership of WonderRoot, MOCA GA, the Bernard A. Zuckerman Museum of Art and sponsored by Atlanta Cultural Affair and ArtsATL.

Christopher Neuenschwander (art, 2011) was chosen as the featured artist for the Print Big! 2013 block design and has been asked to visit Florida State College to do a steam roller block and have an exhibit on campus.

Marcy Starz (art, 2009) completed a mural for the 2012 Living Walls, the City Speaks.

Nikki Starz (art, 2010) exhibited artwork in Shoebox Productions presents: "PASSAGE" as part of the grand opening of Shoebox Productions' unconventional exhibition space at the Goat Farm Arts Center.

Amy Zschaber (MAT art education, 2010) presented at the 21st Model Schools Conference in June 2012, and was a featured writer for the American for the Arts blog and organized the 1st Cobb County School District Middle School Juried Art Exhibition in Oct. 2012. She was also an advisor for the GACE Art Education Test Revision in Feb. and her students' anti-bullying campaign images were featured on the 11Alive website in April.

Dance

Courtney Bromwich (dance, 2010) became owner and director of Sawnee School of Ballet in Cumming, Ga. in Nov. 2012.

Haleigh Pritchett (Brooks) (dance, 2010) opened her own dance studio, Fusion Dance Company, in Oct. 2011.

Tianna Pourciau Sykes (dance, 2011) was a chosen choreographer for the 2012 Modern Atlanta Dance Festival, Dance Canvas' 2012 pARTY for Art at Atlantic Station, Dance Canvas' 2013 Performance Series at 14th St. Playhouse and she is a chosen choreographer and performer for SHE Created IT, a 3-day festival and all-female performance review in Winston-Salem, N.C. in Sept. She is a graduate student at Georgia State University pursuing a Master of Science in Educational Psychology.

Chase Todd (dance, 2010) toured with "Shrek the Musical" for a year and half throughout the US, Canada and Asia. He recently booked a world cruise with Holland America as one of the main singers in their Broadway style show.

Music

Mark Helwig's (music education, 2002) painting "Mornings Are Evil" is featured artwork on a coffee in The Coffee Shop of Horrors. The painting also won "Most Humorous" at Dragon*Con 2012.

Adam von Housen (music, 2012) won 2nd prize in the American Protégé International Piano and Strings Competition and performed in New York City at Weill Recital Hall in Carnegie Hall on May 27.

Eric Lindsey (music, 2012) is enrolled in the graduate Opera Program at the University of Houston with a full-tuition scholarship.

Theatre & Performance Studies

Katy George (theatre & performance studies, year) has been presenting a performance about Laura Ingalls Wilder at area schools.

Will Greenberg (theatre & performance studies, 2003) is teaching theatre at an after school program, doing voice-over work and playing the main character in a murder/mystery piece in Israel.

Robert McTyre (music, 1995) appeared as Clement Musgrove in the Warner Robins Little Theatre production of "The Robber Bridegroom," July 6-21, 2012.

Charlie Moore (theatre & performance studies, 2006) and **Ben Tilley** (theatre & performance studies, 2005) are both part of the Creative Team for "Wolves" presented by Actor's Express in Nov. 2012. Moore is the Stage Manager and Tilley is the Lighting Designer. Tilley also worked with Aurora Theatre for "Drowsy Chaperone."

Melanie Avita Rivera (theatre, 2004) taught technical theater skills at Augusta Preparatory Day School's theater camp during summer 2012. She is also an instructor at the Jessye Norman School of the Arts and box office manager at the Imperial Theatre in Augusta, Ga.

Ashley Reeves (theatre & performance studies, 2003) was the stage manager for "Bloody Bloody Andrew Jackson" at Actor's Express.

Jody Reynard (theatre, 1998) served as a guest dance teacher at the Weitzenhoffer School of Musical Theatre at The University of Oklahoma.

Erik Teague (theatre & performance studies, 2008) earned a nomination for a Suzi Bass Award for Outstanding Costume Design of a Musical for "Spring Awakening" at Actor's Express; he also served as a costume designer at the Center for Puppetry Arts for "The Adventures of Mighty Bug" and "Brer Rabbit and Friends," and as a technician at Washington National Opera for "Hansel and Gretel."

Elizabeth Neidel Wexler (theatre and performance studies, 2007) appeared as Margot in Atlanta Lyric Theatre's production of "Legally Blonde."

Lowrey Brown (theatre and performance studies, 2010) performed in Alliance Theatre's production of "Into the Woods," and Georgia Shakespeare's production of "Much Ado About Nothing" in Piedmont Park.

Andrew Crigler (theatre and performance studies, 2010) performed in the Alliance Theatre's production of "Charlotte's Web."

Celebrating the



Leslie Blackwell

Men's Ensemble performs at national convention

The Kennesaw State University Men's Ensemble travelled to Dallas, Tex. in March 2013 to perform at the National American Choral Directors Association (ACDA) Convention. "This was an amazing opportunity for our students and our university," explains Leslie J. Blackwell, director of choral activities at KSU and conductor of the Men's Ensemble. The KSU Men's Ensemble was selected through a blind audition that was judged by a panel of nationally recognized peers and choral conductors in the field, and submissions included a scope of three years of performances and recordings. According to Blackwell, approximately 250 choirs submitted for the convention and the KSU Men's Ensemble is believed to be the only male collegiate choir chosen for the honor this year. ☺



David Caselli

Oral Moses retires from School of Music

Oral Moses retired from Kennesaw State University's School of Music in December 2012 after 28 years at KSU. In addition to his impressive career as a professor of voice, Moses, a bass-baritone, has also had an impressive career of personal research and performance. His research interests include African-American music and Negro spirituals. His CD, "Deep River: Songs and Spirituals of Harry T. Burleigh," was showcased in a PBS documentary on American music. He says, "As an artist, my greatest personal accomplishment is to know that I've made a contribution to the world of music in some way. As a teacher, my greatest accomplishment is seeing my students go on to realize their goals."

Moses plans to continue teaching part-time and stay active in the education of his students. He also hopes to spend more time on his research and performance opportunities, and he jokes that the busiest people in the world are retired people. "But you never know," he laughs, "I might end up on some Greek isle for a while." ☺

e Arts



A Paper Affair

Paper might seem like an everyday object to most of us, but to the three unique artists exhibiting in “A Paper Affair,” paper can be turned into almost anything. Professor Valerie Dibble and School of Art and Design student Mersia Martin, with help from KSU alumna Emily Knapp as graphic designer, curated the site-specific installation exhibit shown in the Fine Arts Gallery.

“A Paper Affair” features the works of artists Jaynie Crimmons, Lucha Rodriguez and Crystal Wagner, all of whom have created printmaking, mixed-media installations and prints for the exhibit. The artists’ works are primarily constructed from paper and repurposed materials, illustrating the diverse nature of the outwardly simple object. “Paper has an amazing potential as an expressive contemporary art medium,” Dibble explains.

Crystal Wagner, an assistant professor of art at Georgia College in Milledgeville, Ga., has exhibited throughout America, including New York City and San Francisco. For “A Paper Affair,” Wagner created “Urban Kudzu” using materials such as chicken wire, birthday decorations, streamers and plastic tablecloths. Wagner explains that the piece represents

the increasing divide between humans and their natural environments. “We exoticize the natural world because we are not connected to it,” she says, and her piece is designed to look as if the plastic and paper materials are growing naturally in the landscape of the gallery.

Wagner began work on the site-specific installation a week before the exhibit’s opening; KSU students helped Wagner tear the streamers into small pieces and then fill every hole in the chicken wire. “It is a very time-consuming process,” Wagner admits, “but it is nice to actually spend time creating something when our everyday lives are so fast paced and hectic. Also,” she adds, “it has been wonderful to engage with the students!”

“A Paper Affair” is a result of a new program hosted by the Bernard A. Zuckerman Museum of Art that allows KSU faculty or students to propose an exhibit during the summer. “They strive to provide unique opportunities in the summer and are particularly attracted to ones that engage students,” Dibble explains. KSU students are involved in all aspects of “A Paper Affair,” from curation and installation to serving as gallery assistants. ☺



Robert Pack

No Amount Too Small: Small Donations Make A Big Difference

By Tanya Thompson Brown

You are sitting in the audience waiting for the show to begin. You begin reading the program, and notice a pledge envelope tucked neatly inside. Perhaps you're thinking, "I should give a little something this time." Even small gift donations are a vital, integral, and much appreciated component of KSU's College of the Arts giving community.

Assistant Director of Development for the College of the Arts Holly Elrod explains, "We have more people giving smaller gifts than larger ones," and a quick look at the Friends page at the back of Flourish magazine shows that hundreds of people have made a difference with contributions from \$1 to \$999.

Those dollar amounts add up, and small gift donors have a variety of options for their contributions; they may stipulate that their gift be designated for scholarships, the purchase of specific equipment or supplies, or applied toward outreach or artist-in-residence programs.

Elrod explains that "Most donors have an idea where they want their donation to go. When they were in school, perhaps they didn't have enough money for an instrument, but somebody made it happen for them,"

so they request their gift be used for the same purpose. Contributions large enough to fund university expansions are certainly thrilling, but the small contributions really add up.

When those smaller contributions come in, funds become available for one, two or three more student scholarships, which may not sound very significant unless you happen to know, or perhaps actually are, that student. As more students are awarded scholarships, Elrod anticipates the recipients will understand and see the benefit of giving back when they reach the point in life where they are able to do so.

"What you hope is that students will carry on that generosity and philanthropy and try to give back, even if it's only a dollar or five dollars," says Elrod.

So the next time that envelope falls out of the program and into your lap, don't hesitate to contribute what you can and say where you would like it to be used. The Kennesaw State University Office of Development is ready to help you make the most of your gift, so that students at Kennesaw State University may make the most of their education. ☺

The KSU College of the Arts offers many opportunities for alumni and friends to make a difference. For information about our alumni and donor opportunities call 770-499-3214. ☺

thriving together

Kennesaw State University announces the grand opening of the Bernard A. Zuckerman Museum of Art on Saturday, Oct. 12, 2013. The occasion will mark the establishment of the first art museum to open in the University System of Georgia in more than 30 years, and in the Atlanta community in more than a decade.

The opening will serve as the finale to a weeklong celebration of Kennesaw State University's 50th anniversary and commemorates the University's dedication to fostering an appreciation of the visual arts in the local community and the region. The public is invited to the free reception.

Grand opening events:

The celebration will begin at 6 p.m. with a ribbon-cutting ceremony at the site of the 9,200-square-foot expansion adjoining the Dr. Bobbie Bailey & Family Performance Center. Kennesaw State President Daniel S. Papp will make the introductory remarks. He will be followed by Joe Meeks, dean emeritus of the College of the Arts, and Catherine M. Lewis, executive director of the Department of Museums, Archives and Rare Books. After the remarks, spontaneous performances will highlight the architecture of the new building, the exhibitions throughout the museum and the University's Arts District. Performances will include representatives from music and dance as well as theatre and performance studies within the College of the Arts.

Opening exhibitions include:

From Earth and Fire: Works by Ruth Zuckerman in the Permanent Collection. This exhibition and accompanying catalogue introduce the work of Ruth V. Zuckerman, who died in 1997, through the artist's own archives and a selection of pieces in stone and bronze from the permanent collection. Bernard A. Zuckerman gifted both collections to Kennesaw State in 1999. He died in February 2013.

See Through Walls: Co-curated by Teresa Reeves and Kirstie Tepper. This exhibit will bring together 14 artists



whose work explores the function and inner workings of real and conceptual constructions. Starting with the fundamental element that defines an architectural space, the wall, the exhibition looks at the physical and psychological dimensions of division, articulation and structure. An art history resource room will broaden the context of the exhibition, expanding the conversation beyond the physical walls to include historical materials, documentaries, media, international works and records associated with site-specific installations.

Salon Style Highlights: 40 Years of the KSU Permanent Collection. Building on the 19th century European style of hanging artwork from floor to ceiling, the museum will present a new interpretation of the Salon tradition highlighting objects from the permanent collection. Exhibited artists include Thomas H. Benton, Athos Menaboni, William Sonntag and Karel Appel.

Alumni Show and Faculty Highlight Series. The Bernard A. Zuckerman museum celebrates recent graduates from the School of Art and Design in the Wilson Building Fine Arts Gallery, and a rotating Faculty Highlight series of work from faculty of the School of Art and Design in the Henriquez Atrium in the Bailey Performance Center.

About the Bernard A. Zuckerman Museum of Art

The grand opening of the museum will celebrate the 40-year legacy of collecting and gallery programming at Kennesaw State University. The Bernard A. Zuckerman Museum of Art will house significant works from the University's permanent art collection in one of three new exhibition galleries, the Leo Delle Lassiter Jolley Foundation Collection Research Center and the Ruth V. Zuckerman Pavilion, a glass atrium featuring the sculptures of Zuckerman's late wife. The Bernard A. Zuckerman Museum of Art will regularly exhibit works of various media by local and nationally recognized artists, University faculty, students and alumni, and serve as a center for education and professional development.

To learn more, visit <http://www.kennesaw.edu/arts/galleries> or call 678-797-2083. ☞

Bernard A. Zuckerman passes away

Philanthropist and university benefactor Bernard A. Zuckerman passed away peacefully on February 22, 2013, at Piedmont Hospital in Atlanta, Ga. He had recently celebrated his 91st birthday. During the past 40 years, Mr. Zuckerman has been an integral part of the Atlanta community and has contributed generously to educational and cultural programs throughout north Georgia. Mr. Zuckerman remains one of the most important benefactors of Kennesaw State University, having given \$2 million to the construction of the Bernard A. Zuckerman Museum of Art, set to open in October 2013. He also donated over 130 works of art created by his late wife, Ruth V. Zuckerman, to the University's collection. ☞



Named Endowments

J. T. Anderson, III Scholarship
James T. Anderson, Jr. Scholarship
Atlanta Steinway Society Endowed Scholarship
Atlanta Women's Commerce Club/Flo Bruns
Memorial Scholarship
Bobbie Bailey Music Scholarship
Florence B. Beddingfield Memorial Art Scholarship

Fred D. Bentley, Sr. Scholarship
Eric and Gwendolyn Brooker Voice Scholarship
The Color Spot Endowment Fund
JoAnn Durham Arts Endowed Scholarship
Cynthia Feldberg Piano Scholarship
R. Wayne Gibson Endowed Piano and Voice Scholarship
Girardot Endowed Scholarship
Glenn Hollingsworth, Jr. Memorial Scholarship
Nick S. Labroff Memorial Endowed Piano and Voice Scholarship

Golden Circle Lifetime Recognition

Dr. M. Bobbie Bailey
Fred Bentley, Sr.
Gwendolyn Brooker
D. Russell Clayton
Joseph D. Meeks
Audrey Morgan
Fred Stillwell
Bernard Zuckerman

Dean's Club Angel (\$500,000+)

Suzanne Siegel

Dean's Club Heroes (\$100,000-\$499,999)

Dr. M. Bobbie Bailey
Bobbie Bailey Foundation
Audrey Morgan
Audrey & Jack Morgan Foundation, Inc.

Dean's Club Champions (\$25,000-\$99,999)

Anonymous

Dean's Club Ambassadors (\$10,000-\$19,999)

The Color Spot
Mike Feldberg

Dean's Club Benefactors (\$5,000-\$9,999)

Anonymous
William Beddingfield
Ms. Jo Ann Durham
Georgia Symphony Orchestra, Inc.
Barbara Kirby
LeoDelle Lassiter Jolley Foundation

Dean's Club Patrons (\$2,500-\$4,999)

Hardin Construction Company, LLC
Tommy & Beth Holder
Holder Construction Foundation
International Business Machines Corporation
ING Financial Services Corporation
Bill & Linda Pinto
Seyfarth Shaw Attorneys, LLP

Dean's Club (\$1,000-\$2,499)

Alpha Psi Omega Theatre Performance Studies
Mr. & Mrs. Chester A. Austin
Mrs. Sarah Carnes Brown
Carceron Systems Group, LLC
Childress Klein Properties, Inc.
Patricia Chilton
Cobb County Music Teachers Association
Cobb Electric Membership Corporation
Linda & John Cooke
John N. Culvahouse
David Daly
Eli Lilly and Company Foundation, Inc.
Elite Telecom Services, Inc.
Connie Engel & Pete Watson
Bob & Elaine Feldberg
Georgia Power Company
Wayne Gibson
Nadia & Jean-Marie Girardot
Deryl & Bob Heflin

G.W. "Bill" and Barbara D. Holden
InfoMart
Dr. Teresa Joyce
Dr. Nancy S. King
Dian & Richard Labroff
Livvy Lipson
Chad Massaker
Mauldin & Jenkins, CPA., PC.
Jimmy Mays & Valerie Whittlesey-Mays
Luis R. Maza
Joseph D. Meeks
Monarch Business Resiliency, Inc.
Robert Nolen
Harry, Cecilia, Lucas and Sabrina Price
Publix Super Markets Charities, Inc.
Dr. Ivan Pulinkala & Mr. Matthew Howard
Repro Products, Inc.
Samuel Grant Robinson
Mr. H. Fred Rodenhausen
Mike Russell
Therese & Gregory Simone
South Cobb Rotary Club
Mr. Timothy J. Ste. Marie
Randy Stuart
Martha Thompson
United Community Banks, Inc.
J. David Watkins
Susan White
Kay & Wesley Wicker
Lynn Wilson & Mark McKenzie
X3Sports

Benefactors (\$500-\$999)

April & Bill Conaway
Bob 4 Cobb
Dr. Joan T. Duncan & Mr. Lee C. Duncan
Mrs. Joyce Lowenstein
Greg Morgan
Mr. & Mrs. Bob M. Prillaman
Rex B. & M. Joy Simms
Steinway Piano Galleries
Joe Thomas
David Whelan

Patrons (\$250-\$499)

Margaret Baldwin
Bravo Dance Center, Inc.
Jean Butler
Pamela Carsillo
Marianne Crew
Marian Feldstein
Linda Flournoy
Thomas Foss
Carlos Franceschi
Cathleen Kiss
Paul Lapidés
Ron & Cheryl Matson
Shane McDonald
Lynn Moore
Cheryl & Tony Oglesby
Jayne Petrak
Karen Robinson
Dr. & Mrs. Edwin A. Rugg

Cara Lee Smith & Robert L. Smith
Shelley Strickland
SunTrust Bank Atlanta Foundation
Renée Torobin
William Wender
Christine Ziegler
Justin Ziegler

Friends (\$100-\$249)

L. Dean Adams
M.K. Adams
Michael Alexander
Jane Barnette
Mr. James M. Barrow & Ms. Stacie L. Barrow
Nancy Bland
Gwendolyn Brooker
Alan "Chip" & Glenda Brown
Alton Brown
Mr. Gene B. & Mrs. Charley W. Brown
James Bullins
Patricia Burns
Steve & Pam Burton
Stephen Byrne
Mr. & Mrs. Todd J. Campbell
Center Stage II Dancewear
Douglas Chaffins
Ming Chen & Zhen-Huan Lu
Elaine Clamon
Tim Cole
Melanie Collier
Reiko Kimura Coltek
Heather Conley
Reba Daly
Dance Fashions, Inc.
John Dziejowski
Holly Elrod
Gail Erlitz
Dawn Eskridge
Michael Frey
Melissa Fryer
John Gentile
Georgia Metropolitan Dance Theatre, Inc.
Bruce Gillett
Gilreath Family and Cosmetic Dentistry
Dorothy Grant
Diana Gregory
H. Scott Gregory, Jr.
Roberta Griffin
Barbara Hammond
Angela Harris
Michael & June Harris
Linda Hightower
Arlene Hocking
Theresa Howard
James Johnson
David Kehler
Fred Keith, Jr.
Kellogg's Corporate Citizenship Fund
Tom Key
Robert Kiser
Bobbi Kornblit
Dr. & Mrs. George A. Kramer
Lanie Shipp & Associates

Michael Edwin Lips II Memorial Arts Endowed Scholarship
Robert and Livvy Lipson Arts Scholarship
Joseph D. Meeks Music Endowed Scholarship
Brian Miller Memorial Music Scholarship
Audrey and Jack Morgan Scholarship in Music
Betty and Joel Siegel Theatre Scholarship
Lillian Bennett Sullivan Voice Scholarship
James (Jim) P. Smith Memorial Art Scholarship
Tena E. Redding Endowed Arts Scholarship

H. Fred Rodenhausen Music Scholarship
Thomson Salter-Salova King Art Scholarship
Robert Sherer GLBT Endowed Scholarship
Howard Logan Stillwell Performance Endowment
Virginia Tumlin Music Endowed Scholarship
Gretchen E. Van Roy Voice Scholarship
Wachovia Endowed Theatre Scholarship
J. David Watkins Endowed Scholarship in Piano Performance
Sam Wilhoit Jazz Scholarship in Music

Lee Harper Studios
William Leisy
Rita Levine
Byron Long
Harrison Long
Richard G. Low & John A. White, Jr.
Doreen Massell
Benton Mathis, Jr.
Carole Mauge-Lewis
Maureen McCarthy
Dr. and Mrs. Michael R. Meeks
Linda Melgaard
April Munson
Stevan Novakovich
Courtney Parkins, Sr.
Sandra Parks
Charles Parrott
George Petrak
Norman Radow
Dan & Sharon Rakestraw
Teresa Reeves
Mr. & Mrs. Kevin Roberts
Marianna Rothschild
Nancy Ryle
Maxine Saless
Pat & Chuck Schadl
Alvis Searcy
Stuart Shapiro
Barbara Shaw
Howard Shealy, Jr.
George Shiveler
Dr. Betty L. Siegel
Richard Siegel
Janet Strazulla
Karen Thomson
West Cobb Dance Center LLC
Virginia Wilder
Brittany Wirsig
Robert Wright

Neighbors (\$50-\$99)

Anonymous
Mary Akerman
Cheryl Anderson
Nancy Arnold
Sandra Barclay
Thomas Besenyodi
Diane Black
Jerome Blumenthal
Century Travel
Paul Colangelo
John Collar, Sr.
Judith Condon
Ben Cook
Florrie Crapps
Gary Crovatt
Mr. & Mrs. Michael Fagan
Fred & Judi Fergus
Joseph Greenway
David Harper
Joslin LeBauer
Susan Lubatkin
Laura Lupp

Rebecca Makus
Alison Mann
C.W. Marlow, Jr.
Angela & Richard McKee
Oral Moses
David Palombo
Robert Rice
Derek Russ
Cynthia Skaggs
Gretchen Vaughan
Holly Walquist
Mary-Elizabeth Watson
Hugh White
Jan Wilson
Bob Wise & Dee Peterson-Wise
Michele Ziemann-DeVos

Partners (\$1-\$49)

Anonymous
Ana Baida
Faye Bartholomew
Doug Belisle
Ted & Louise Betsch
Jan Boner
D.S. Brown
Ms. Lula Bullard
Bentley Cauthen
Susan Clark
Brenda Curtis
Jim Davis & Family
Flora Devine
D-Unity Consulting, LLC
Mr. & Mrs. Bill Edwards
Kathelia Faraca
Gerry & Sue Flinchum
Mr. & Mrs. Robert Franks, III
Steven Funk
Jacalyn Grant
Ariel Gratch
Kermit Hairston
Daniel Hesketh
Nikia Humphrey
Andy January
Nick A. Jones
Nancy Kassel
Mr. & Mrs. Frank L. Marzo, Jr.
Diana McClintock
Music To Go & Grow
Jackie Myers
Adam Payne
Misty Pitts
Ral Robinson
William Ross
Kenyon Shiver
Christina Smith
Keith Smith
The Sulton Pediatric Group, PC
John Warren
Jonathan Woodson
Soohyun Yun
Gloria Zotalis

Friends

Is your name missing?

This list includes gifts to the College of the Arts at Kennesaw State University processed between Jan. 1 and Dec. 31, 2012.

If your name is not included and you think it should be, or if it is included, but not at the level you believe to be appropriate, there may be several reasons why:

- You made your gift either before Jan. 1, 2011 or after Dec. 31, 2012.
- You gave more during this time period than you realize. Check the next giving level for your name.
- You made a pledge instead of an outright gift. This listing includes only gifts received. If you made a pledge during this time period, but elected not to begin paying it until after Dec. 31, 2011, your name will not be listed until next year.
- Your contribution was directed toward an area outside the College of the Arts.
- We omitted your name in error. If we have made a mistake, please let us know.

Questions?

Please contact Holly Elrod at 770-423-6907 or hse9199@kennesaw.edu.



College of the Arts
1000 Chastain Road #3102
Kennesaw, GA 30144

Non-profit Org.
US Postage
PAID
Kennesaw, GA
Permit No. 551



Starlight Summer Concerts

**Star-Spangled Spectacular
Concert and Fireworks Show**
with the Georgia Symphony Orchestra

Saturday, June 29, 2013

KSU Campus Green, 8 pm

Free Admission | Rain date on Sunday,
June 30 in case of inclement weather

**Coy Bowles and
John Driskell Hopkins**

of the Zac Brown Band

Sunday, July 14, 2013

Legacy Gazebo Amphitheater, 7:30pm
Admission: \$10 (\$5 for seniors/children)

KSU Faculty Jazz Parliament
Sunday, July 21, 2013

Legacy Gazebo Amphitheater, 7:30pm
Admission: \$10 (\$5 for seniors/children)

Yacht Rock Schooner
Sunday, August 4, 2013

Legacy Gazebo Amphitheater, 7:30pm
Admission: \$10 (\$5 for seniors/children)

kennesaw.edu/arts/starlight