

THE

SENTINEL

The Voice of the Students

The Student Newspaper of Kennesaw College

SPECIAL ORIENTATION ISSUE



KENNESAW COLLEGE

THE NEW STUDENT EXPERIENCE

ORIENTATION



Office of the President

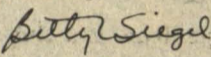
Dear Student:

As President of Kennesaw College, I am happy to welcome you into our college family. You have chosen a fine four-year college, one that is growing in size, in programs and in commitment to the communities it serves.

Kennesaw College has a proud tradition of scholarship, coupled with a warm, supportive environment conducive to learning. You will find dedicated teachers here and students who care about higher education and the opportunities it affords.

Knowledge with commitment is a way of life at our college. We invite you to take advantage not only of our splendid academic offerings, but of our many cultural, recreational and enrichment activities as well.

Have a fine year; we are glad you are here!

Sincerely,

 Betty L. Siegel
 President

BLS/lkj

Knowledge with Commitment

THE SENTINEL

Staff

- Kim Kline Editor
- Shelby Jones Managing Editor
- Bryan Rainey Business Manager
- John Petrizzo Entertainment Editor
- Eddie Blick Student Publications Coordinator
- Pat Johnston Faculty Advisor

All comments and opinions expressed in signed columns are those of the author and not of **The Sentinel** staff, its advisors, or Kennesaw College. Unsigned editorials are the views of **The Sentinel** staff and do not necessarily reflect the views of the faculty, staff, administration, the Board of Publications of Kennesaw College or of the Board of Regents of the University System of Georgia.

LETTERS TO THE EDITOR are welcome. It is the policy of **The Sentinel** to print no letter or column that cannot be identified by name; name, and telephone number must be included with each submission. At the author's request, the staff will publish letters and columns anonymously or with a pseudonym. Submissions must be no more than 300 words in length and shall be subject to standard editing, for space needs only.

The Editor
 The Sentinel
 Kennesaw College
 P.O. Box 444
 Marietta, Ga. 30061

Address all correspondence to:

Why be involved?

The water is cold and strong, flowing wildly over a struggling figure barbed in headgear and life-jacket. On the shoreline several people look on with mixed concern and interest as a rope is cast toward the former occupant of a white water canoe. His face is a study in concentration and fear.

The rope stretches tautly between two teams of screaming, straining contestants, now over a mudhole, not a river. All around a shouting mob roars encouragement as one side drags the other toward the mudpits of defeat and infamy.

A volleyball sails through the air, bouncing from hand to hand as a winning team struggles to retain its quarterly championship. The challengers are new, motivated, agile, and swift. The intramural season is only beginning to heat up.

Canoeing, tug-o-war, and intramural sports are only a few of the many activities available to KC students after class. There are also fishing trips, movies, guest speakers, dinners, workshops, art exhibits, concerts, dances, and a host of other things to do after class.

The entire co-curricular program is called **STUDENT ACTIVITIES**. Every student here at Kennesaw pays a quarterly fee entitling him or her to participate in and enjoy sports, entertainment, trips, games, and almost any activity imaginable between classes or after work.

But what advantage does the program offer you?

The greatest edge students gain is from their participation in events and projects which enable them to meet new people, learn new skills, take on responsibilities they have never enjoyed before.

Learning extends beyond the classroom and textbook into everyday life. Dozens of special interest groups and service organizations have been formed here over the years to provide new and interesting learning experiences to everyone.

But the services provided by these groups also provide a tangible return on the stu-

dents' investment. Attendance at movies and concerts is free to all college community members (and their guests). Special activities, such as dances, KC Day, and many field trips are free.

Students who are used to paying for their high school yearbooks will find that Kennesaw's *Montage* is already paid for. The *Sentinel* and *Share* magazine are also free to students. And the KC Student Union distributes a quarterly calendar of events free of charge as well.

Planning and organizing these events is an everchanging task as new ideas and trends take hold across the campus. As new organizations are formed, and as seniors graduate and leave, many positions annually become available to newer, fresher students who want to do more than just listen to lectures.

But why get involved at all?

Why get a college degree? Why go to the grocery store? Because, if you have a need, you will see that it is fulfilled. If you have a desire, you will realize it. Enjoying new activities may be what you are looking for in your spare time.

Or you may find you want to share your skills and experience with others. Or that special trip or project you've been wanting to do but haven't had the help for may just be what someone else wants as well.

Thousands of people have taken advantage of their student activity program at Kennesaw over the years. If you're a trend-setter, this is the way to set trends. If you like crowds, you can find them here. If you just want your money's worth, you can get that, too. If you like fun, meeting new people, going places, doing things, seeing, being seen—yeah, this is the way to do it.

STUDENT ACTIVITIES. Yea, that's the ticket.

Besides, what better way is there to make the next four or five years the best in your life? Well, at least, among the best.

Think about it.

Liberal arts adds three majors

Students at Kennesaw College will have the opportunity to major in three additional fields of study beginning fall quarter, 1986. New degree programs in international affairs and communications were approved by the Board of Regents at its July meeting and a new career track in commercial art will be added to the existing bachelor of arts program.

Second nationally only to business administration in popularity as a major, the new communications degree is expected to attract a significant number of students. Projected enrollment for the 1986-87 school year is 30, reaching 90 in three years.

With the addition of a new career track in commercial art, students will be able to take 30 hours in the field of graphic design. Coursework will include skill development in photography, illustration, layout, and typography. Dr. Patrick Taylor, art education coordinator, estimates that 50 art majors will select this option. 'The whole area of graphic design is a rapidly expanding field, and we believe this new option along with the study of related fields, such as communication and marketing, will enable our graduates to enter the field.'

Ingrid Harper has joined the KC faculty and will teach the commercial art courses as well as basic design courses. 'Ms. Harper has an MFA degree from the University of Wisconsin

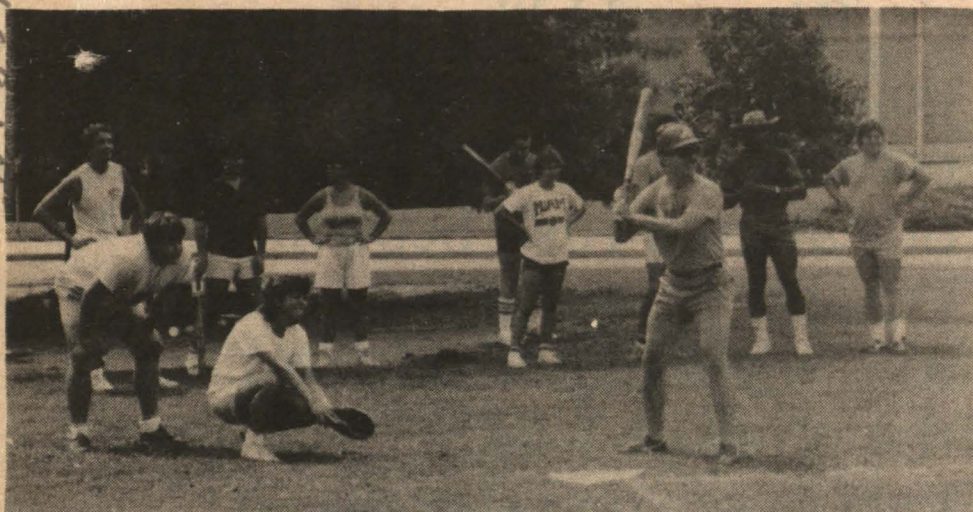
and has extensive experience working as a graphic designer and artist,' added Dr. Taylor.

The new programs use a multi-disciplinary approach that gives students a broad liberal arts base including considerable business and computer training. 'We're trying to make our liberal arts graduates more competitive in the job market,' explained Dr. George Beggs, dean of the School of Arts and Behavioral Sciences.

The first of its kind in the University System, the bachelor of arts in international affairs program reflects Atlanta's growth as an international city and with it the increasing need of metro area businesses for employees that are knowledgeable in world affairs. Atlanta is the regional center for government agencies and over 100 firms in Cobb County engage in international transactions, with several hundred operating in the state.

Dr. Willoughby Jarrell, a political science instructor, explained that the program essentially evolved because of the interest of businesses in the community and their desire to hire employees 'who have an appreciation of the cultures and languages of other countries.' Fifty international business concerns were polled and the program was developed based on their suggestions.

ORIENTATION



Intramurals

A comprehensive program of Intramural activities is offered under the supervision of the Office of Student Development. A modern, well-equipped gymnasium, an indoor swimming pool, and tennis and handball courts make it possible to provide a wide variety of individual and group competitive activities. These activities include, but are not limited to: badminton, basketball, flag football, golf, handball, ping-pong, soccer, softball, swimming, tennis, volleyball, and weightlifting. A student need not be a star athlete to compete. The expanding program includes participants from all areas of the campus, providing an excellent means of becoming a part of the Kennesaw College community while forming new friendships through healthy competition.

Intramurals also employs a number of students in various capacities. Students serve as staff coordinators, officials, scorekeepers, lifeguards, weight room assistants and special event volunteers. Anyone interested in helping with the intramural staff should contact Donna Templeton, Coordinator of Intramurals and Leisure Programs at 429-2980.

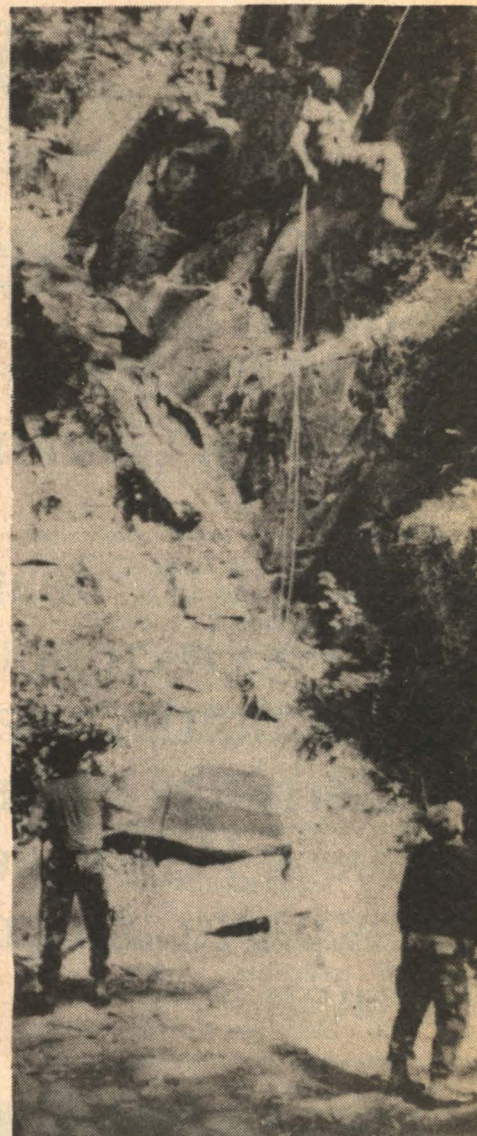
Whether participating as a player or employee, Intramurals is a fun way to meet people and take a break from studies. Students, faculty, and staff discover physical, social, and mental stimulation through Intramural activities, so there is a place for everyone in this exciting program. Intramurals is where the action is. Come out and play - Just for the fun of it!

Economics & Finance

The Economics and Finance Club at Kennesaw College is a new organization on campus. We are looking for individuals with an interest in economics and finance to participate in a variety of activities, ranging from softball games and cookouts to hosting guest speakers and dinners. We anticipate meeting twice a quarter. If you are interested in this club and would like to become involved as a member or an officer, please contact Dr. Randy Goodwin, Room 206, Business Administration Building.

Ranger Team

The Kennesaw Ranger Team is a club designed to help build self-confidence and inform members what the outdoor survival aspect of the army is about. Membership is open to anyone with a GPA of 2.5 or better. Club activities consist of camping, hiking, repelling, survival, water survival and much more. If interested, contact John Hurley (commanding officer), Tom Hohler (second in command), or Greg Cohl (team sergeant) for more information. Meetings will be held from 6:30-8:30 on Thursdays in the Humanities Building, room 141. The Ranger Team offers the opportunity to meet new people and to learn more about your capabilities and the world you live in.



LET C&S HELP BUY YOUR BOOKS THIS QUARTER!

C&S Cobb Town Center is giving away two \$100 cash prizes in our October drawing and you may be one of our lucky winners!* To enter, stop by our branch, located 1 1/2 miles south of the Kennesaw College campus, and drop your name in the contest box. The drawing will be held on Saturday, October 4.

Ask about a C&S Money Saver Checking Account! A Money Saver Checking Account allows you up to 15 checking account transactions per month for a monthly service charge of only \$3.75. It's just right for a student's budget. While you're here, find out how you can get a C&S MasterCard or VISA bankcard.

And when you come into C&S Cobb Town Center and open an account,** we'll give you a C&S Flyer (while supplies last). It's great fun for picnics, parties or those ever popular study breaks!



*Must be 18 or older and need not be present to win.
C&S employees and their families ineligible for drawing.
**Excluding IRAs.



The Citizens and Southern National Bank
Cobb Town Center Branch
2597 George Busbee Parkway
Kennesaw, Georgia
Member FDIC

DELTA CHI GAMMA SORORITY

Do you want to make long lasting friendships? Have fun while going to college? Be involved in campus and community activities? If your answer is yes to the above questions, then Delta Chi Gamma Sorority is for you!!

During the year we are involved with both campus and community activities, have mixers with fraternities from area colleges, have a Halloween party, Christmas party, and many many other activities.

We would like to encourage you to stop by and talk with us at orientation. We are also holding our annual rush September 29 - October 3 in the Student Activities room on the second floor of the student center. We would love to see you there!!

If you have any questions, please feel free to call Layne Carson, President, at 926-3008; Kim Cox, Vice President, at 425-2372; or Patti Pettitt, Rush Chairman, at 422-4467.

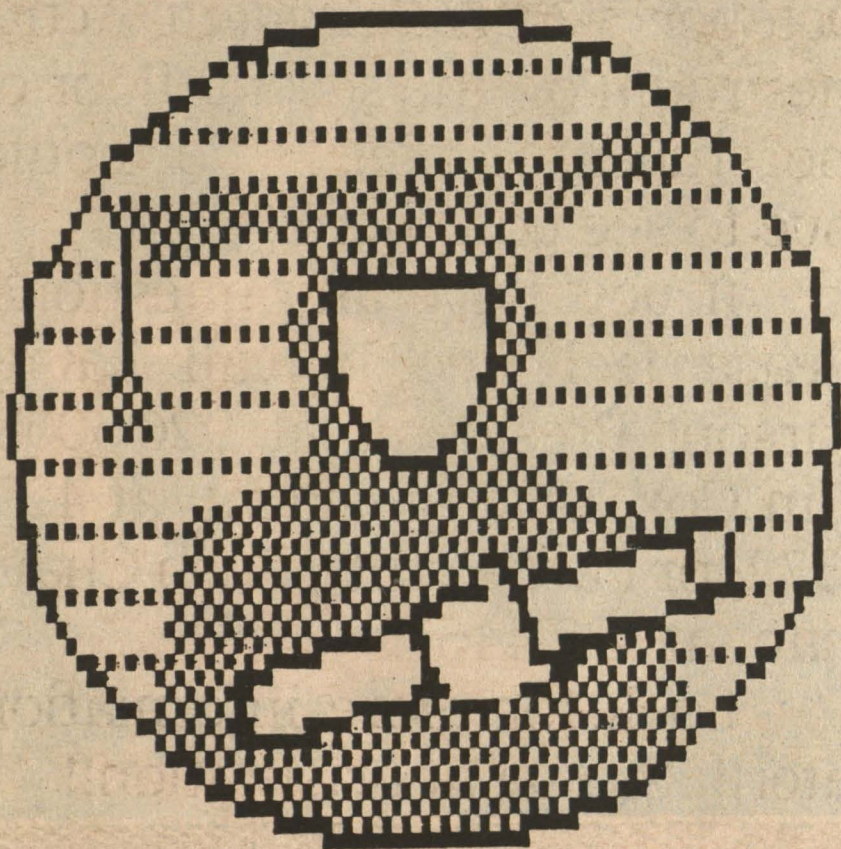
Look for more information later!! See ya at orientation!!



ORIENTATION

C·A·P·S

Programs and Services Offered by the CAPS Center



The CAPS Center is a comprehensive service center where students obtain help with educational, career, and personal concerns from a trained staff of counselors, specialists, and faculty advisors. Such assistance is intended to support Kennesaw College's academic programs by offering relevant resources that facilitate the students' orientation to the college, contribute

to personal development, enhance academic success, and facilitate career skills and placement. Special activities and professional staff are available for new students, adult, minority, international, developmental, physically impaired, and learning disabled students. All students are invited to come to the center or phone 429-2966 from 8 a.m. to 8:30 p.m., Monday through Thursday and 8 a.m. through 5 p.m. Friday.

ORIENTATION - A program designed to help the new student adjust to college. Included in the program are opportunities to meet Administrative personnel, understand academic program offerings, and become aware of various organizations and services available to maximize student success.

COUNSELING AND TESTING - In an atmosphere of confidentiality, professional counselors offer assistance to students with a variety of concerns. Special seminars in study skills, time management, stress management, assertiveness, and test-taking are conducted each quarter during the academic year. All institutional testing is coordinated by the staff.

ADVISEMENT - The CAPS advisement service is provided to students who have not declared an academic program of study. A team of faculty advisors from the four schools meet with students in the CAPS Center to help students plan academic course work, choose a program of study, identify career goals, and assist new students with concerns that may arise. CAPS advisement is part of the Kennesaw College Advisement Program whereby each department within the four schools provides advisement services to students who have chosen their programs of study. Once the undecided CAPS students select a specific program of study, their records are transferred to the respective school where faculty in the academic departments advise the students until graduation.

PLACEMENT AND CAREER DEVELOPMENT - Placement personnel are available to assist the Kennesaw student or alumnus with career related concerns. Students are encouraged to use these services early in their college career - ideally in their freshman

year. Among the services offered are: career exploration and development, including self-assessment and occupational interest testing, cooperative education opportunities, job opening notices, assistance in resume writing, interviewing, and job search, on-campus recruitment for seniors and alumni, and resume referral.

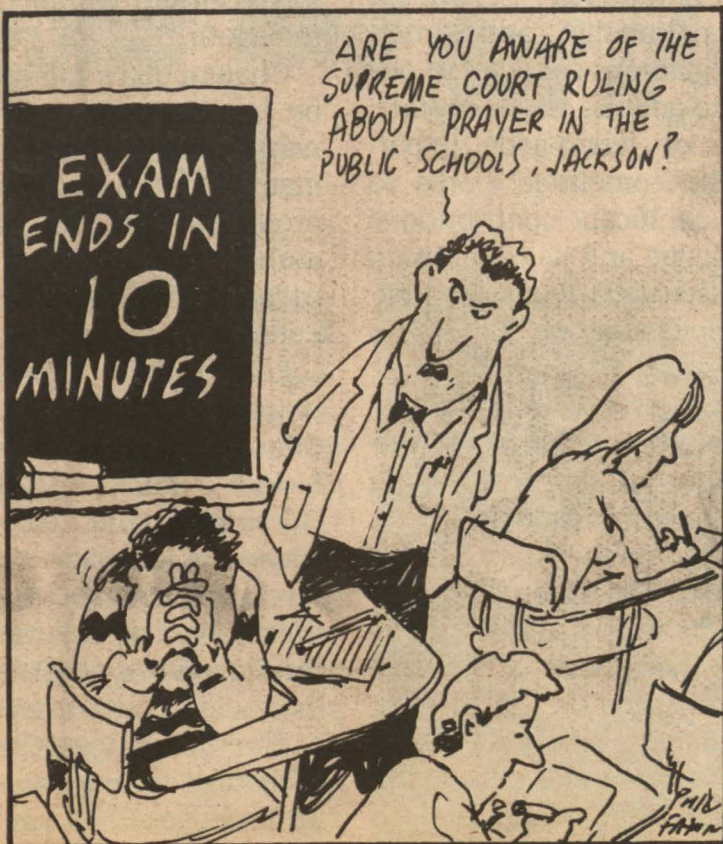
COOPERATIVE EDUCATION/INTERNSHIPS - The cooperative education/internship program offers job related experience for all academic majors at the college, and provides the student practical experience and insight in human relations as well as financial assistance. The work experience these students receive is a valuable asset to graduates starting out in their chosen professions. Students interested in the co-op/internship program should contact the co-op personnel during their freshman year.

CAPS RESOURCE ROOM - This room is located within the CAPS Center and open to all students without appointment. It houses informational material about careers, part-time and full-time employment, SIGI software program for career exploration, other colleges and graduate schools, CLEP, CASSI (Career Assisted Study Skills Instruction), and free handouts about a wide range of educational, career, and counseling information.

KC101 - An outreach program of the CAPS Center and the faculty, KC101 is an elective course (5 hours credit) available to freshmen who are interested in obtaining a thorough orientation to the college and to higher education in general. This quarter-long course is offered to small groups of students and includes a variety of experiences directly related to success in college, e.g., study skills, knowledge about college resources, exploration of personal goals.

FRANKLY SPEAKING

... phil frank



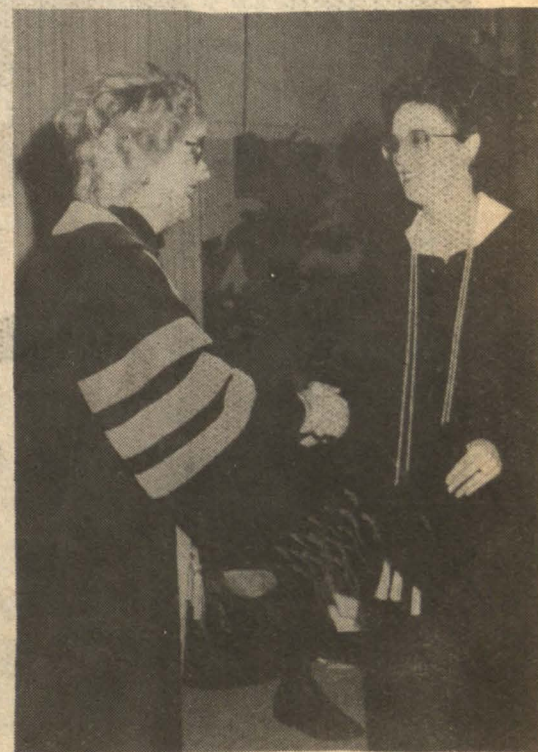
Psi Chi

Psi Chi is the national honor society in psychology. The purpose of Psi Chi is to advance the science of psychology and to encourage, stimulate, and maintain scholarship of the individual members in all fields, particularly in psychology.

The advantages of Psi Chi are not only intellectual. Support and friendships are an integral part of your learning experience as a member of Psi Chi.

There are many areas in which you can become a part of this unique organization. For more information, drop your name and phone number in the Psi Chi box in the Student Workroom or the Social Science Building.

It is your enthusiasm that will lead to our success!



ORIENTATION



STUDENT UNION

Entertainment

The Entertainment Committee plans and presents dances, concerts, and other forms of entertainment which appeal to the college community. The Entertainment Committee tries to present a varied schedule of events, ranging in interests as diverse as the students involved. Of course, the more people involved in committee decisions, the more appealing the schedule will be. If you have an interest in events at Kennesaw, or if you are interested in programming, the Entertainment Committee always welcomes more help.

GO-PHER IT!!



Chatauqua

The Chautauqua Committee is a standing committee of the Student Union, which has the purpose of providing entertainment and cultural enrichment across the campus.

The Chautauqua Committee brings nationally and internationally famous speakers to our campus to address issues of state, national, or world-wide importance. The committee works to provide significant contributions to the college and its community through speakers that have first-hand knowledge of the issues they address.

Recent guests of the Chautauqua Committee were James Dickey, author of the best selling novel, *Deliverance*, Donald Woods, former editor of the South African newspaper, *The Daily Dispatch*, and an advocate of anti-apartheid causes. Other guests of the committee have been Dr. Gail Sheehy, a world famous psychologist and author of the best seller, *Passages*, and Dr. Rollo May, a founder of the humanist movement in psychol-

ogy, and the author of many books, including the very widely read, *Love and Will*.

The Chautauqua Committee sponsors one speaker or debate per quarter. Its program format has received attention throughout the south.

Chautauqua's fall speaker will be James Burke, a British journalist who covered the development of the U.S. and Russian space programs in the 1960's, and the co-author of an upcoming PBS series called "The Day the Universe Ended," scheduled to air this fall.

For further information on becoming involved in the Chautauqua Committee, contact Jackie Poole, Chairperson, Adrienne Acton, Vice-Chair, by leaving a message in Chautauqua's mailbox in the Student Workroom, or call Dr. Bill Hill, faculty advisor at 429-2957 in the Psychology Department

The Chautauqua Committee is scheduled to meet as needed on Thursdays at 10:00 a.m. (Locations may vary, so contact a member.)



ORIENTATION

WORKS FOR YOU!



Nature Bound

Join Nature Bound. It's a great way to meet friends and enjoy outdoor recreation. From sunny beaches to snowy mountains, Nature Bound offers a wide variety of trips, including: canoeing, rafting, horseback riding, camping, and back-packing.

Our memberships are open to all students, faculty, and staff of Kennesaw College. Students are already members if they are currently enrolled at Kennesaw.

Your voting power is activated once you have attended two (2) consecutive meetings.

If you are interested in joining Nature Bound or in any of the scheduled events, please contact Micheal Bresnan or Ruth Coursey through the Union Office.

Visit our both during orientation, attend our weekly meetings. We will help you get involved in college and still have fun — We're Nature Bound.

Publicity and PR

The Publicity and PR Committee is responsible for advertising and publicising Student Union activities. The Publicity and PR Committee monitors the banners in the Student Center, publishes calendars of events during the quarter, and many other things. Any advertising done on behalf of the Student Union has probably been done by the PR Committee.

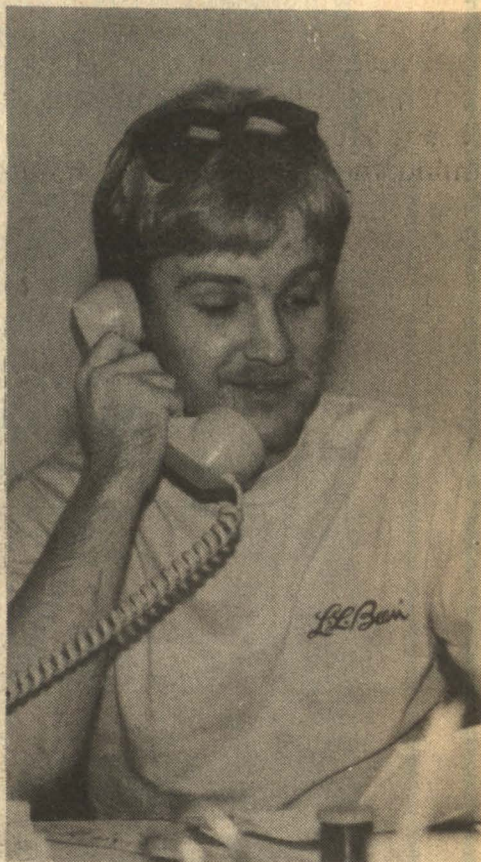
The Publicity and PR Committee is interested in any new members, particularly those interested in advertising. The Publicity Committee can give anyone interested hands on experience with advertising.

Hospitality & Decorations

The Hospitality and Decorations Committee acts as the Student Center's host. They provide refreshments, decorations, and other services to any Student Union event. The Hospitality and Decorations Committee is one of the lesser known but more important committees in the Student Union. They are responsible for presenting a good impression of the Student Union. For those interested in decorating, acting as host or hostess, or general planning, the Hospitality and Decorations Committee welcomes you to join them.

Indoor Recreation

The Indoor Recreation Committee sponsors educational and competitive activities which appeal to the college community and makes recommendations for the improvement and operation of the recreational and lounge areas of the Student Center. The Indoor Recreation Committee tries to program competitions of interest among students. During the Fall quarter, for example, some of the competitions planned are Trivial Pursuit, Chess, Backgammon, Risk, and Dungeons and Dragons.



come and get it!



K.C. Day

The KC Day Committee is responsible for programming Kennesaw's biggest event of the year, KC Day. The KC Day Committee spends the entire year booking events and purchasing food for the annual spring carnival. The KC Day Committee needs dedicated people interested in planning and booking for major events. For those interested in programming, KC Day is a committee that welcomes your help.



Cinematic Arts

The Cinematic Arts Committee is responsible for programming the movies shown each quarter here at Kennesaw. The Committee members try to program hit movies from various genres in order to present a balanced viewing schedule to meet different tastes and preferences. For example, during Fall Quarter, the Cinematic Arts Committee will be presenting such recent hits as *Ruthless People* and *The Great Mouse Detective*.

Many important elements make up the Sentinel...



the most important element is people.

You can be a part of Kennesaw College's student newspaper. Stop by our office upstairs in the Student Center or call 429-2978 for more information.

ORIENTATION



American Marketing Association

Students interested in enhancing their careers in the broad field of marketing can do so by networking with the Atlanta and National chapter members of the AMA. Joining the K.C. Collegiate chapter of the AMA can give you some insight on the many careers available for those interested in the future of their marketing careers at a booth set up in the Student Center during Fall registration. Dr. Susan Carley is the faculty advisor of the club, her office is located on the third floor of the Library. Meetings for the fall quarter will be announced on the Business Building and Student Center bulletin boards. There are several positions now available in our Collegiate Chapter due to the graduation of members this last June. Brian Schrotter (president), Jan Whorten (v.p. membership), and James Bickes (v.p. com-

munications) are planning the events for the coming year and are looking forward to interacting with new officers and members in the fall.

So far the club plans to repeat some of the activities which were successful and rewarding experiences for members last year. The marketing computer simulation involving our club and several of the local universities will take place in the fall. The Annual International Collegiate Chapter meeting in the spring will help officers from collegiate chapters nationwide exchange successful techniques for keeping the collegiate chapters operation running smoothly.

Dr. Carley and the officers listed above are available for questions pertaining to the club and its activities.

We look forward to seeing an active membership this year!



K.C. Ambassadors

The Kennesaw College Ambassadors extend a special greeting to all new KC students, and offers any assistance they can provide to help make KC a great place to be for each of you.

As a new student, you will probably get your first introduction to many of the Ambassadors during freshman orientation, for they will be orientation leaders. Introduce yourself, for you are bound to find a college-long friend, because the Ambassadors are known for their willingness and desire to interact with their fellow students, as well as with the community and the business sector. The individual Ambassador is dedicated to projecting Kennesaw College at its best!

The KC Ambassadors are selected from the top percentage of academic achievers for their outgoing and energetic nature. Although one is not qualified to apply to the Ambassadors until the end of his/her first year at KC, all new students are encouraged to keep their GPA high, and to set the Ambassador membership as a first year goal!

Best wishes at KC!!!!!!!

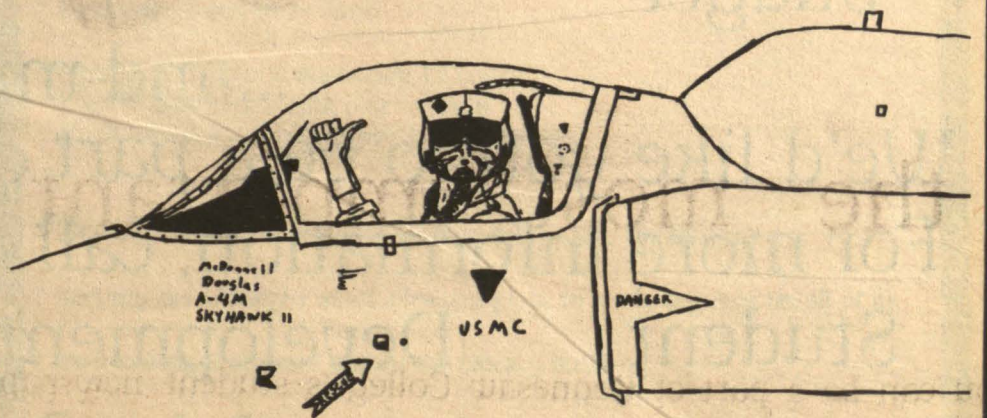
JOIN

TODAY!



*Aviation, Space Technology Advancement & Education Society * Kennesaw College*

"WINGS," the aviation and space technology advancement and education society at Kennesaw College, is for anyone interested in aviation. Military personnel and civilians are welcome. No pilots license or aviation experience is required. Air shows, museums, and air bases will be toured. Meetings are every Wednesday at 6:30 p.m. in the Student Activities Room. Anyone interested should contact Mark Parish at 973-5784, or Tim Graham at 971-1450.



Kennesaw College

Student Government Association



...the link between the students and the administration of this college

The SGA will provide you with the opportunity to learn the governance process that this country was founded on. Learn how:

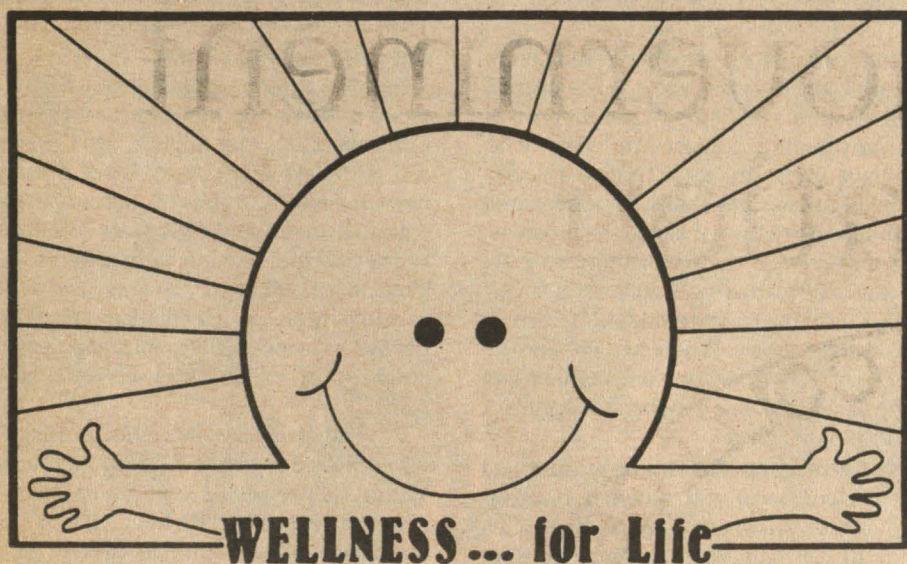
a committee operates
to plan and execute a
budget

to run a meeting
to preset legislation before
a group of people

...and much more!

We'd like you to be a part of the SGA. Learn with us!
For more information, call 429-2978 or come by the
Student Development office on the second floor
of the Student Center.

ORIENTATION



Wellness Center

In keeping with the commitment at Kennesaw College to enhance the student's experience by providing opportunities to grow and develop socially, spiritually, physically, and emotionally, the Office of Student Development is pleased to introduce the Wellness Center. The Wellness Center offers a number of programs, films, seminars, guest speakers, brochures, publications, and individual and group support teams in the six areas of wellness to help you make choices in your life that will lead to optimal wellness.

Wellness has been defined as the "integration of body, mind, and spirit - the appreciation that everything you do, think, feel, and believe has an impact on your state of health." The six commonly recognized dimensions of wellness are defined as being social, physical, intellectual, career/vocational, emotional, and spiritual. The six

areas are uniquely-interactive, and therefore, need to be in balance to achieve good health.

The Wellness Center has been under construction since April and is projected to be completed by the beginning of Fall quarter. If the construction is completed on schedule, the Wellness Center will be open and functioning by the first week of the Fall quarter.

The Wellness Center will contain a variety of assessment equipment with student assistants to help with conducting the assessments. The Center will include a scale, several blood pressure cuffs, a mini-trampoline, exercise mats, skinfold calipers, eye examination charts, a posture score chart, and a trunk flexibility tester. Also, an IBM-PC has been purchased to help conduct computerized assessments in a variety of other health areas.

Student Nurse Association of Kennesaw College

S.N.A.K. is the Student Nurse Association of Kennesaw College. Membership is open to all students who are declared nursing majors. The purpose of S.N.A.K. is to aid in the preparation of nursing students for the assumption of professional responsibilities. S.N.A.K. sponsors a variety of activities including speakers, socials, and community service projects. In addition, we are always looking for new and creative ideas.

The officers for the 1986-1987 academic year are: President, Karen Fandl, second year ADN student; President elect, Teresa Henson, Junior BSN student; Vice-President, Theresa Clark, Senior BSN student; Secretary, Jennifer Hall, second year ADN student; and Treasurer, Ginger Staton, Senior BSN student. Elections will be held in the fall to elect a Vice-President elect from the first year ADN students. Two faculty members, one from each degree program, are appointed to serve as our advisors.

We need people who want to contribute their ideas, talents, and creativity, and who want to help make this organization a great one that we can all be proud of. We need people who want to serve on committees

such as: Public Relations, Programs and Arrangements, Finance, and By-laws. We need people to help develop and publish our newsletter.

Membership in S.N.A.K. provides you with the opportunity to join both the state and the national nursing student organizations. This helps to keep you informed about what is happening in the nursing profession at both the state and national levels. Each year there is a national convention which all members of the national organization may attend. We will also be publishing an informative quarterly newsletter and hope to be able to offer you discounts on nursing supplies.

General meetings are held monthly, committee meetings are scheduled as each individual deems necessary.

There will be a general membership drive in September. Dues are charged annually. If you have any questions, you may contact us through the nursing office located on the second floor of the library.

So come and join us. Bring your ideas, your talents, your voice, and your creative energies. We look forward to meeting you!

Life Long Learning Center

The purpose of the Lifelong Learning Center is to make your college experience more pleasant and beneficial by providing programs and services designed specifically for students returning to college or entering college after several years delay. For students over 25, this is a program of particular interest.

The Lifelong Learning Center is located on the north balcony of the Student Center. The Center has been under construction since May and is scheduled to open at the beginning of Fall quarter. All students are welcome to use the facilities and attend the workshops. The Center is open from 8:00 a.m. to 8:30 p.m. daily.

The facility also has a number of message boards within. These include the Message Board, the typing service board, the babysitting exchange board, the carpooling board, and the housing board. The message boards are a convenient place for students to leave messages and exchange information. There are 3 x 5 index cards provided for your use.

The typing service board is for people to

leave messages concerning typing services or typists required. The babysitting exchange board will help eliminate one of the biggest problems facing returning students with children. If you need a babysitter or would like to exchange babysitting time with another student, sign up on the babysitting exchange board. The carpooling board is convenient for students to advertise for shared rides. This saves gas, and is a good way to make friends. The housing board is a board for students to post houses, apartments, or rooms for rent.

A variety of brochures, calendars, and newsletters are available in the Center to keep students informed on campus events and the various services available. And, for those who need a quiet place to relax between classes, there is a lounge and coffee pot in the Center.

The Lifelong Learning Center has many items of convenience for students. They also plan to add many more services. The Lifelong Learning Center encourages students to drop by, and to give ideas or suggestions for the improvement of the facilities provided therein.

LIBRARY

Information at a Glance

* **Library hours:**

Monday-Thursday...6:00 a.m. to 12 midnight
 Friday.....6:00 a.m. to 5:00 p.m.
 Saturday.....10:00 a.m. to 6:00 p.m.
 Sunday.....1:00 p.m. to 10:00 p.m.
 Hours reduced during holiday and term breaks.

* **Library information:**

Circulation Desk/Checkout...429-2902
 Government Documents.....429-2901
 Reference Desk.....429-7425

* **Loan period and book limit:**

4 books per subject; maximum 12 books
 2 week loan period with one renewal
 (Students must have imprinted, validated I.D.)

* **Please refrain from bringing food or drinks into the library.**

* **Keeping the Library a quiet, pleasant place to study depends on all of us.**

* **No smoking is allowed within the Library building.**

ORIENTATION



HRM Association

The HRM Association is a professional student organization for all undergraduate and MBA students interested in the field of human resource management. If you want to develop and maintain competence in the rapidly changing human resources management field, and if you value learning through interaction with professional managers..., then the HRM Association is for YOU! We are affiliated with the national organization, the American Society for Personnel Administration (ASPA). By joining the Kennesaw

Student chapter, you automatically become a member of the ATLANTA-ASPA organization and may attend their monthly meetings.

HRM Association became officially chartered by national ASPA on February 28th. Considering the short time the Association began, this is definitely a tremendous step for both Kennesaw College and Human Resource Management Association. The Association was also recognized at the banquet as the student organization making

the most outstanding achievements during the 1985-1986 academic year.

What can you as a student at Kennesaw College gain from becoming a member of HRM Association? This organization will put individuals in contact with others who also have an interest in the Human Resources field. Besides the ability to develop and maintain interpersonal skills, the organization will provide the opportunity to meet professional managers locally. We are already one of the largest student ASPA chapters in the country. There are 190 and we rank 7th! Think of the contacts you will make during the time you spend as a student at Kennesaw College.

Membership options can be student and non-student, local and national membership. Meetings and programs are conducted for both day and night students to fit all schedules on a monthly basis. The national membership entitles you to receive journals/newsletter, participate in professional development programs such as the annual ASPA National Conference, Regional Conferences, and Seminars. Students can compete for awards. These include the Student Chapter Merit Award, Outstanding Student Award, Ted Henry Student Research Award, and hold elected office.

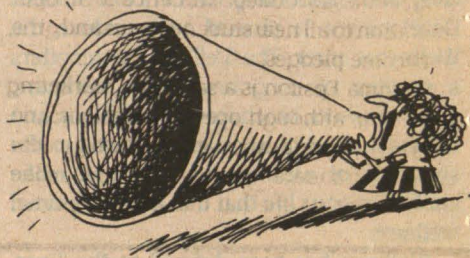
Local membership entitles you to take part in field trips, special seminars workshops designed to compliment you academic/work experience, and attend parent chapter meetings. Internship opportunities are also available for Kennesaw students.

The HRM Association Officers for the term 1986-1987 were elected during Spring quarter. They are: Phyllis Carter-President, JoAnn Maltby-Vice President, Jeanine

Nyguen-Secretary, Martha Millholland-Treasurer, Gwen Jones-Newsletter Editor, David Breton-MBA Liaison.

Our Association would not be where it is today without the assistance of Dr. Tina Christenson, Faculty Advisor. Dr. Christenson is the Assistant Professor of Management, holds a Ph.D. and M.B.A. from Georgia State University, and a B.A. from the University of Georgia. She regularly assists in our student meetings as well as the ASPA monthly meetings. Her diligent efforts and guidance helps the organization remain steadfast in its direction as well as its goals.

The first general membership meeting for all interested students is being held in BA 122 on September 23 from 12:15-1:20 and again on September 24th from 5:00-6:00. We encourage all students to attend either meeting. Our Fall Calendar of Events will be announced at that time...and we hope you will join us. MARK YOUR CALENDARS NOW and help us make this year an even better one than last year. Dr. Christenson and all the officers welcome all students to attend and join an exciting organization of Kennesaw College.



GET INVOLVED

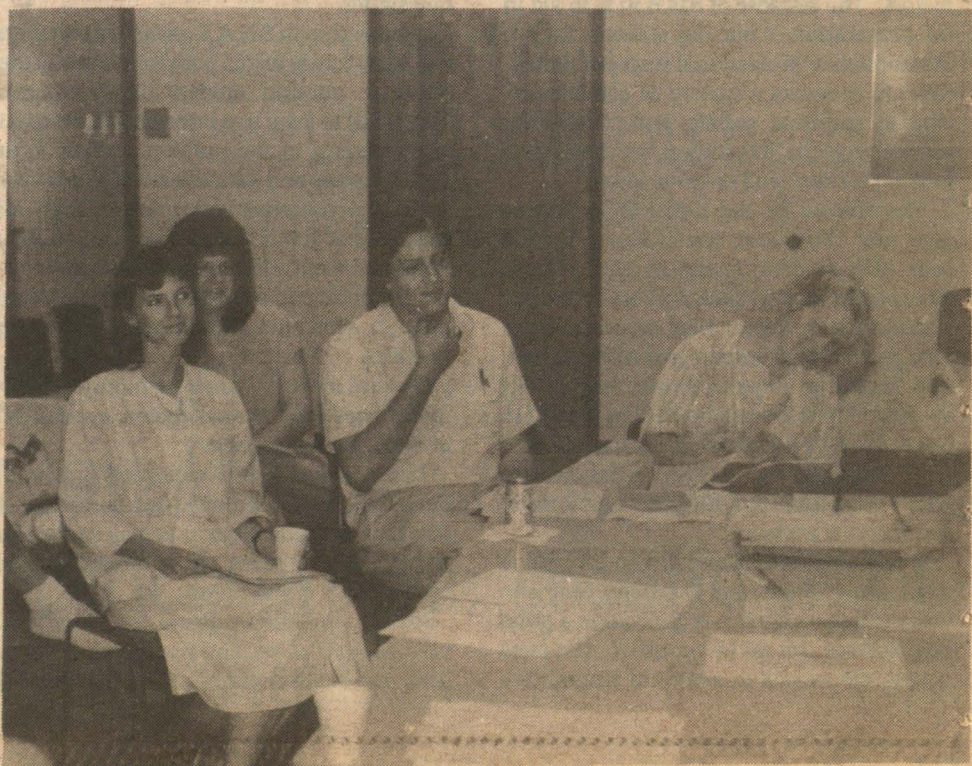
Student Government Association

This year's Student Government Association is taking chances. Three projects that have never been done before are already in the works. Kennesaw College is a rapidly growing college, and the SGA wants to grow with it. We're looking at a whole new system of Student Representation. Eighteen Senators will have their own specific constituencies. Direct representation of the Student Body's wishes will occur. The Student Government Association is the link between students and the administration of this college. Students are the college's most important asset. But to be an asset after graduation, it's important to hold more than just a degree. Experience is the key. Ask anyone whose out there. You are invited to become a vital part of Kennesaw College while it provides vital experiences for your future! Take the Challenge with this year's Student Government Association. Learn with us, and learn about yourself.

There are many ways to get more than a degree out of college. Going to school is your opportunity to learn, but for those who

want to learn some more, the way is to do it through hands-on, practical experience. The Student Government Association can teach you many things. Do you know how to run a meeting? What about presenting an idea and backing it up? Do you know how to gather information and assimilate it? How about learning how a committee operates? Well, you could even chair one! All these skills are 100% necessary in the many environments a student may enter after graduation. No where else but in Student Activities are you allowed to accept a challenge without the fear of "being fired" if you happen to make a mistake. What's best of all is that if you make a mistake in college activities, you're not likely to make the same mistake out there in the "real world." The Student Government Association is the perfect place for you to increase yourself as a person and as an asset. You'll be valuable from the start!

We'd like you to be a part of SGA. Learn with us! Call: 429-2978 or come by the Student Development office on the second floor of the Student Center.



ORIENTATION



Pi Sigma Epsilon

The Delta Gamma Chapter of Pi Sigma Epsilon extends a warm welcome to each new Kennesaw College student and an open invitation to all new students, guys and girls, to become pledges.

Pi Sigma Epsilon is a sales and marketing fraternity, although open to all majors, designed to provide experiences which give the college graduate that 'competitive edge' when entering the job market. By partici-

pating in the various projects, each member learns necessary skills in communication, selling, planning, production, marketing, and the list goes on and on. As a matter of fact, often attached to the Pi Sig name is a higher starting salary for graduates due to the high regard employers place on the fraternity experience. Is it not better to learn the difficulties of a profession before entering the 'real world?'

Pi Sigma Epsilon offers lucrative advantages in addition to the valuable experiences: first of all, the fraternity is sponsored by the sales and marketing executives of Atlanta, executives who make themselves available for advice during projects, and who are also available to individual members seeking advice. Secondly, a Pi Sig member's contact with the same members, as well as lifelong contact with fellow chapter members, provides the proper networking for landing a desired position in the business world. Finally, although Pi Sig is a professional fraternity, it has quite a social side as well; because all of the members have a common interest, it is easy for one to imagine the good times the members have together!

Anyone interested in pledging may contact Lang Dorsey, President, at 992-3861 or Harriette Leppard, Vice President, at 973-4669. Remember, whether or not one is a marketing and sales major, everyone must sell themselves once they enter the professional world, and Pi Sig is here to teach the winning skills.

Be on the look-out for Pi Sig's fall project; it's something every student will want!

**GREEK
IS
GREAT!**



Baptist Student Union

The Baptist Student Union (BSU) of Kennesaw College is a Baptist-supported (but open to all) organization which provides opportunities for personal growth, Christian fellowship, and involvement in meaningful ministries. Students elect an executive council which, working closely with the campus minister, plans the Baptist Student Union activities.

Weekly meetings are held on Tuesdays at 10:00 a.m. in Library 209. Other activities include: Monday evening meetings with the Southern Tech Baptist Student Union, the Annual Before-School Retreat (Sept. 19-21), State Baptist Student Union Conferences (October and April), Winter ski retreat, Spring break mission trip, and many social and recreation activities.

For further information, and to be placed on the mailing list, contact: Laurie Eason, Baptist Student Union President, at 974-8080 or Johnny Pierce, Campus Minister, 422-3347.

RED WHITE AND BLUE ALL COUNTRY BENEFIT FOR DIABETES

Starring: John Conlee

Featuring: A. Jane O'Bryant, Gopger Broke with Tennessee Tucker, Wayne Hinson Robert Taylor, Swamp Creek, Ben Dover, Saddle Tramps, Sandy Alvarado, Night People

Performers: Faci Free Cloggers, Georgia Magic Club

August 31, 1986 at the Cobb County Civic Center in Marietta for tickets and information call Volunteer Kennesaw College at 429-2990 or come by Room 210 in the Student Center. Tickets \$10.00 in advance, \$12.50 at the door A 1986 Chevrolet Pick-up to be given away

ATTENTION WOMEN OF KENNESAW ZETA CHI LAMBDA SORORITY INVITES YOU TO RUSH

October: 8th 10am-12pm

9th 9am-11am

15th 5:30pm- 7pm

16th 12pm- 2pm

WE OFFER...

- *lifelong relationships
- *character development
- *promotion of academic excellence
- *community and school

- assistance
- *a way to put your skills to work to benefit the sorority, the college, and the community

JOIN US AT OUR:

Meeting Sept. 7th
7 p.m. at Idlewood
Commons Apt. 212

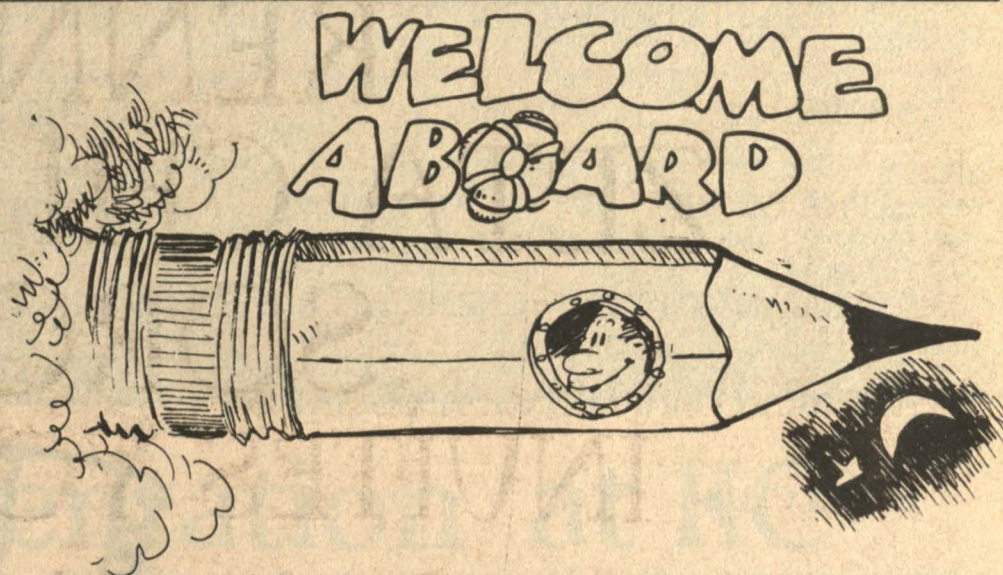
-Pool Party...Sept. 13th
11a.m.-3 p.m. Idlewood
Commons

For more information call:

President: Barbara Evans 423-0239 V.P.: Eileen Higgins 926-1294
Secretary: Helen Vincent 423-0239 Faculty Advisor: Dr. Stevenson
Treasurer: Teresa Henson 425- 2729

NEED SOME DATA? CATCH A ZETA!

ORIENTATION



Executive Roundtable

The Executive Round Table of Kennesaw College would like to welcome all new KC students and encourages each of you to keep your GPA high this first year in order to join our exciting group in the fall of 1987.

The Executive Round Table is made up of sophomores, juniors, and seniors with a minimum GPA of 3.0. The purpose of the organization is to bring interesting speakers, discussing contemporary issues, to the KC campus.

The successful 1986 theme for ERT was 'Preparing for the 21st Century,' the list of speakers included such noted guests as Bob Evans, a former CBS correspondent, and Georgia Governor Joe Frank Harris. The

1987 theme is 'Performing in the International Arena,' and the current officers, with very high goals, are in the process of negotiating with Ted Turner of TBS, and Mayor Andrew Young of Atlanta.

Each guest speaks at one of five dinner meetings throughout the school year; after his/her speech, the members of ERT discuss the information they have just received, after which, various tables of ERT members pose questions to the speaker. The entire evening encourages innovative thought about important issues that basically concern everyone in one way or another.

Once again, welcome to KC, and plan on joining us in the fall of '87.

Visions

Organized three years ago by students interested in promoting the visual arts on campus, Visions: The Student Art Guild, has grown steadily in membership and increased its visibility on campus. Each spring the Guild sponsors the annual student art exhibition in cooperation with the Cultural Affairs Committee. The exhibition held this past spring had over 200 entries and provided over one thousand dollars in prizes and purchase awards. In addition, Visions sponsored in March a student trip to the National Gallery of Art in Washington D.C.

Plans for this year include another student trip to a leading museum city, plus a bigger and better student art exhibition. Initial plans have been made for a fall retreat in the North Georgia Mountains where workshops in watercolor and photography will be con-

ducted along with visits to the studios of well-known artists residing in the area.

Funds for the club are raised through art projects such as the silkscreen printing of the KC Day T-shirts. All students interested in art are invited to join.

Paige Howell, a second year art major, will serve as president of Visions for the forthcoming year. Marlene Rudy, just returning from a summer art study in Italy, will serve as secretary. Sonja Rockey and Stewart McDonough will serve as representatives to the Cultural Affairs Committee. Co-advisors for the organization are Roberta Griffin and Patrick Taylor. Meetings will be held on the second Tuesday of every month during the T & T hour from 12:05 to 1:20 in the art gallery. Interested students can call 429-2939 or 2839 for more information.

French Club

Bonjour! Bienvenue a Kennesaw College! Le Club Francais is looking forward to an exciting year, and we hope all old and new French enthusiasts will join us. Le Club Francais is made up of French students, students studying French, and any and all other people who enjoy learning while experiencing French culture, history, glamour, etc.

The regular activities of Le Club Francais are attending French films being shown around Atlanta, attending guest lectures, and dining at French restaurants. This past year many members visited the Quebec government office in Atlanta, and others participated in a scavenger hunt (En Francais, Bien Sur) with Le Cercle Francais a Georgia Tech.

Anyone who holds an interest in French style, ideas, and so forth, is welcome to join Le Club Francais! Look for signs indicating meetings during fall quarter!!

A new language assistant from Paris will be advising the group, so this year is predicted to be an eventful year!

Bonne Chance a KC!

Sigma Tau Delta

Sigma Tau Delta is a national English honor society. The local chapter requires that members be English or English Education majors (or English minors) with a 3.0 average and one English course above English 201. Dr. Don Russ (Ext. 2847, Humanities 117) is the faculty advisor.

Aside from its regular meetings, Sigma Tau Delta hosts a very popular quarterly social for the English faculty and college administrators. It works closely with the English Department and Chair, Dr. Bob Hill, in sponsoring literary and scholarly presentations of 'local talent' as well as in bringing in outside 'celebrities.' It has been recently involved in the campus appearances of well-known scholar and editor Nina Baym, prize-winning poet David Bottoms, and internationally famous poet/novelist James Dickey.

Sigma Tau Delta is one of the most active student organizations at Kennesaw College and offers wonderful opportunities for participation and rewarding behind-the-scenes involvement.

BECOME A 4-LETTER MAN.



Why are a lot of college men and women becoming buddies in Army ROTC?

Probably because Army ROTC is full of the kind of people other people go out of their way to meet.

ROTC students tend to be high achievers who are interested in more than their studies. They're popular students with a serious side, but who like to have a good time, too.

In other words, when people join Army ROTC they often meet people a lot like themselves.

For more information, contact your Professor of Military Science.

**ARMY ROTC.
BE ALL YOU CAN BE.**

For more information about a future in the National Guard, Army Reserve or Active Army: CONTACT: Major Wingard, Business Building, Room 215, phone 429-2929.

WE WANT YOU

KENNESAW ASSOCIATION OF ACCOUNTING STUDENTS

KENNESAW COLLEGE AMBASSADORS

SHARE

ROTORACT

MU RHO SIGMA

CIRCLE K

GUITAR ENSEMBLE

ALPHA GROUP

P.E. MAJORS

SENTINEL

ASSOCIATION STUDENT NURSES

AMERICAN STUDENT CHEMICAL SOCIETY AFFILIATES

SOTA

SIGMA ALPHA IOTA

AMERICAN MARKETING ASSOCIATION

MU ALPHA THETA

FELLOWSHIP OF CHRISTIAN ATHLETES

BAHAI CLUB

HOSPITALITY AND DECORATIONS

BAPTIST STUDENT UNION

KENNESAW ASSOCIATION OF STUDENT EDUCATORS

BLACK STUDENT ALLIANCE

PHI ETA SIGMA

PUBLICITY AND PUBLIC RELATIONS

PHI MU ALPHA SINFONIA

CAMPUS CRUSADE FOR CHRIST

NATURE BOUND

KENNESAW COLLEGE MATH CLUB

POLITICAL SCIENCE CLUB

COMPUTER SCIENCE CLUB

LIFE SCIENCE CLUB

ECONOMIC AND FINANCE CLUB

INDOOR RECREATION

DELTA CHI GAMMA

EXECUTIVE ROUNDTABLE

FRENCH CLUB

INTERNATIONAL STUDENT ASSOCIATION

INTRAMURALS

PI SIGMA ALPHA

SPANISH CLUB

JAZZ BAND

COLLEGE UNION

CHORALE

THETA CHI

CHAUTAUQUA

PRE-LAW CLUB

RANGER TEAM

CONCERT BAND

PHI ALPHA THETA

VISIONS

TOASTMASTERS

CINEMATIC ARTS

BLUE KEY

MONTAGE

KENNESAW SKI CLUB

PSI CHI

COBB COUNTY SYMPHONY ORCHESTRA

SIGMA TAU DELTA

STUDENT GOVERNMENT ASSOCIATION

PI SIGMA EPSILON

