

THE SENTINEL

KENNESAW STATE UNIVERSITY

Papp talks tuition increases, HOPE changes and budget woes in the face of a "thin year"

Carolyn Grindrod
NEWS EDITOR

President Daniel Papp stressed that this year will be a "thin year" as he updated the Student Government Association on Feb. 24 on the state budget cuts, HOPE Scholarship reductions and tuition increases for fiscal years 2011 and 2012.

Papp said the University System of Georgia is facing a 9 percent reduction in state allocations for fiscal year 2012. "We've taken in fiscal year 2011, this fiscal year, approximately a 6 percent reduction," said Papp. "So this is an additional 3 percent reduction. For the whole University System, that's a grand

total of \$186 million...and that isn't the only bad news."

Since the early 1980s, the University System has used what Papp called the "Funding Formula" to calculate estimated funds for colleges and universities based on the number of semester credit hours, which would have resulted in an increase in funding for KSU in the next couple of years. However, Papp said that USG plans on cutting the "Funding Formula" money out their budget for fiscal year 2012.

"That is about \$177 million," Papp added. "You put those two together and you have, just for the sake of argument, about \$300 million in

See PAPP Page 3



Carolyn Grindrod | The Sentinel

President Papp speaks to SGA at its meeting Feb. 24. Papp warned of budget hardships for fiscal years 2011 and 2012.

Kent State admin named new provost, VP of academic affairs

From Staff Reports

KSU welcomed the addition of its new provost and vice president for academic affairs on Feb. 25, as Dr. Timothy J. L. Chandler will assume the role effective July 11, 2011.

"It is a privilege for me to be joining Kennesaw State," Chandler said. "The excitement and energy across the campus from the faculty, staff and students is palpable, and I am excited that I have the opportunity to help shape the future for what I see as a truly remarkable institution."

Chandler joins KSU from Kent State University, in Ohio, where he served as senior associate provost for academic affairs, providing leadership and oversight for academic affairs and developing strategic objectives and university-wide policies and procedures, insuring the professional success for faculty and academic successes for students.

President Daniel Papp welcomed Chandler, and added that Chandler's previous experiences would prove to be an asset to KSU.

"Dr. Chandler is an

accomplished professor, researcher and administrator – a true leader who engages students and works collaboratively with faculty and staff," Papp stated. "He will be a strong asset to KSU as the university continues to increase its national visibility, and we are pleased to appoint him to this critical role."

As an administrator for Kent State, Chandler focused his efforts on ensuring professional success for faculty and academic success for students.

At Kent State, Chandler is credited with developing a comprehensive Student Success Center designed to increase student academic success and to improve retention and graduation rates. He also was responsible for the complete revision of the university's liberal education requirements.

Prior to his appointment as senior associate provost in January 2009, Chandler held the position of dean in the College of the Arts at Kent State and also served as the associate dean in the College of Fine and Professional

See CHANDLER Page 3

Staff parking lot closes to make room for new science lab

Carolyn Grindrod
NEWS EDITOR

A fresh chain-linked fence closed off the faculty and staff parking lot on Marietta Drive on Feb. 23 as the College of Science and Mathematics prepared for its newest addition – a four-story science lab.

The estimated \$21 million lab addition will include 54,000 square feet and will feature 14 instructional labs and 12 project and research labs, allowing for the expansion of faculty and student collaborated research projects.

The lab will be located in the space on Marietta Drive between the current Science and Math Building and the Arboretum and will consume the current park spaces near the loading dock to the residential parking area.

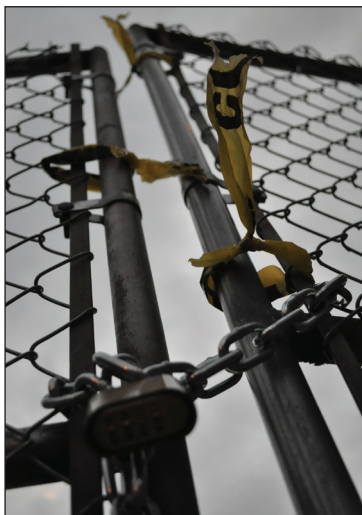
Beth Tindel, director of Parking and Transportation Services, said KSU originally planned to start on the project last November, and that Parking Services adjusted for the loss of faculty/staff parking by moving several spaces to the West Deck.

"We added 50 spaces to faculty/staff in the West Deck and lost 53 spaces on Marietta Drive, so the net loss of spaces is three," said Tindel.

According to KSU's Campus Mas-

ter Plan Executive Summary from 2006, the addition is part of the Phase 2 plan for KSU and is scheduled for completion in 2013. The summary also states that new buildings, including the lab addition, will be built on existing surface parking, so the parking spaces must be replaced before the campus has reached its parking demand capacity.

Choate Construction of Atlanta, who built the Village Suites, The Commons and the Central Parking Deck, will be in charge of building the new addition. Groundbreaking for the science lab addition is slated for March 18 at 10 a.m., said Tindel.



Michelle Babcock | The Sentinel

NEWS

New (and free) place to park
Page 3



OPINION

Our gun-free, defense-free campus
Page 5



A&L

Dude looks like a lady
Page 8-9



SPORTS

Three straight wins for softball
Page 12





BIKE LANE

KSU Bicycle Month

APRIL



BIKE LANE

During the month of April, The KSU Bike Shop and Cycling team will be promoting commuting trips to campus

Come join the fun and have a chance to win cool prizes each week leading up to our 'Bicycle to Campus Day' on April 20th.

Come learn about the benefits of biking to campus.

Look for the BLUE tents in front of the Recreation & Wellness Center

PAPP continued from Page 1

reductions over what the University System of Georgia thought we were going to get. That's not good news."

Papp did say that KSU has already taken steps to secure the community for this year.

"To an extent, there is good news for KSU," said Papp. "It is as if the budget reductions we have are already in place at KSU. We'll meet most of the sixth percent and a little bit more than that, so we're in good shape through the end of June 2011."

However, Papp also said the "bad news" will come with fiscal year 2012, which begins July 1, 2011.

"We're going to be asked to absorb another 3 percent reduction in state allocations," said Papp. "Plus we are not going to get an estimated \$7 million that we would have gotten [from the University System due to the cut of the Funding Formula]. So the bottom line is that we have to figure out how to do more work with less money"

Papp said that because of these reductions in budgeting, students will undoubtedly face a tuition increase, though a set amount for the increase has not been decided.

"Nobody knows what the tuition increase will be," added Papp. "The Board of Regents has habitually, for very good reasons, waited until after the General Assembly allocates money to the University System before the Board determines what the tuition increase will be. The reason that the Board of Regents does that is they figure if they put the tuition increase first then the General Assembly will use the tuition increase to take away state funds."

Papp also spoke about the issues surrounding the HOPE Scholarship during the weekly SGA meeting.

"Governor Deal and Georgia Legislature are stuck between a rock and hard place," said Papp of the bill Deal proposed last week that would restructure HOPE. "They are currently looking for ways to spend less money on HOPE."

Deal has proposed that students who receive a 3.0 GPA will receive

HOPE, which will cover only 90 percent of tuition of fiscal year 2011; books and mandatory fees will no longer be covered and it will only cover 127 credit hours.

High school students looking to receive HOPE will have to complete more "rigorous" classes like College Prep. Advanced tracking, AP classes and more.

In addition to the changes in HOPE, The Zell Miller Scholarship will be created and will be given to students with a combined 3.7 GPA and a 1200 SAT score (or 26 on the ACT). This scholarship will cover 100 percent of tuition.

Papp suggested that SGA meet with other SGA groups around the state to come together with a unified stance on HOPE and then present a unified voice on their positions.

"I would strongly not suggest that each of the 35 student government associations goes forward independently because it would just end up in the legislators' ears as nothing more than cacophony, a bunch of noise that they would not listen to or respond to," said Papp.

After listening to Papp speak, SGA voted against supporting Deal's proposed bill and Ali Kamran, SGA president, said that the group plans to be active in several rallies against the bill, including a rally on March 2, planned by Georgia State University.

The rally will start at 9 a.m. in Hurt Park near GSU and students will walk to the Georgia Capitol to protest the bill.

"Ten percent may not seem like a big amount by itself, but when coupled with books and mandatory fees this could end up being a substantial amount," said Kamran. "Also the 90 percent is set at fiscal year 2011 amounts and we are certainly going to face tuition increases which will not be factored into all of this."

Kamran said he worries rising tuition and fees will cause students to cut back on classes and pick up extra hours at their jobs, causing them to delay graduation.

"This has the potential to lead us into a 'slippery slope' where funding may not continue to meet aggrandizing tuition and fee demands," said Kamran.



rehab|pc

Do you need to recover data off of and old machine? Is your computer slow?

Is your computer protected from viruses? Are you tired of annoying pop-ups?

Is there something wrong and you just can't put your finger on it?

Come on in!

We are on Chastain Rd.
Between Taco Mac and 5 Guys

* "like" us on facebook for a 10% Discount
www.facebook.com/rehabpc

* Bring in your KSU id for another 10% Discount

www.rehabpc.com
678-310-5690
info@rehabpc.com
Store Hours
Mon - Sat
10am - 7pm

Adult Learner Programs, Kennesaw Activities Board, and International Student Association present:



FAMILY FUN DAY

DREAMWORKS HOW TO TRAIN YOUR DRAGON

FREE!!


- * Sponsor Giveaways
- * International Games
- * 12:30 PM Pizza Lunch
- * Face Painting
- * Family Movie

Saturday March 26, 2011
11:00 am to 3:00 pm
University Rooms

RSVP Required by March 18th, 2011:
www.kennesaw.edu/stu_dev/alp/calendar.shtml

AAUW MENTORING SEMINAR

HELPING WOMEN BREAK THROUGH BARRIERS



FREE*

ADMISSION & FOOD
3.25.11
1PM UNTIL 4PM

* RSVP EMAIL REQUIRED TO AAUWKENNESAW@GMAIL.COM. LOCATED IN THE UNIVERSITY ROOMS

10% OFF

with **KSU ID!**

(excludes stamps & pre-paid cards)

GOIN' POSTAL

WE BUY TEXTBOOKS FOR CASH!

WE BUY MORE! ALL YEAR LONG!

CLOSEST POSTAL SERVICES TO KSU
FEDEX DHL UPS

PROFESSIONAL DOCUMENT SERVICES	1133 Chastain Road - STE 200 Kennesaw, GA 30144 (near Mellow Mushroom)
FREE DELIVERY AVAILABLE TO KSU!	678-290-5420
GOINPOSTALKSU.COM	

Safe & Secure Mailbox Rental

Proud Sponsor of KSU Tennis and Soccer

Vice Provost of Global Engagement and Strategic Initiatives appointed

Alisen Redmond
STAFF WRITER

KSU has appointed a Vice Provost of Global Engagement and Strategic Initiatives.

Dr. Barry Morris was appointed to the newly created position because of his strong background and the department's need for coordination, as it is experiencing exponential growth, said Interim Provost and Vice President for Academic Affairs Dr. Ken Harmon.

Global Engagement & Strategic Initiatives engages in a variety of international initiatives including student and faculty exchanges, study and teach abroad programs, international internships, bringing international students to KSU and building relationships with international universities, Harmon said.

The Vice Provost of Global Engagement and Strategic Initiatives needs to have a good understanding of international contexts, a strong footing in international initiatives, understand the resources available to KSU and be comfortable in international settings, which Harmon said are all qualities Morris possesses. Morris will represent the school in international settings and further develop KSU's international relationships.

Students will benefit by having access to more internships and study abroad programs, as well as by receiving a global focus in their education to prepare them for the global marketplace, Harmon said.

"We will have more international students and interacting with them is a benefit to our students as well," said Harmon. "There has been an explosion of interest from multiple universities from multiple countries that want to build relationships with us. KSU currently has relationships with universities on every continent except Antarctica."

One priority for Global Engagement and Strategic Initiatives is to build deep, long-term, sustainable and strategic relationships around the globe, said Harmon. The department currently wants to bring the India-China-Americas Institute to KSU since India, China and the United States are becoming the new triad of economic power, Harmon said. KSU already has relationships in Mumbai, India, and some in China.

Universities are accountable to the accrediting agency SACS to uphold their Quality Education Plans. KSU's plan centers on global education and was adopted in 2007. Since KSU has an international focus, global



Dr. Barry Morris

education initiatives should be strategic and that is why this position was created, Harmon said.

Morris also serves as the Interim Executive Director of the Institute for Global Initiatives and formerly served as KSU's Director of Cabinet Strategic Projects. In his current position, he will be responsible for directing the departments that oversee study abroad programs, global admissions and area studies, and for developing and managing strategic partnerships with international universities, business, governments and NGOs. He will also work to make KSU's focus on global engagement consistent throughout the campus.

Morris helped to open American University Nigeria, the first U.S.-style university in Nigeria, where he served as Dean for one year. He has been on the faculties of GA Tech and GSU and was a senior researcher at the Carter Center of Emory University and the Martin Luther King, Jr. Papers Project.

Morris has worked as a consultant and translator for several corporations and governmental entities, and as an international banker. His research interests include the political economy of emerging markets, foreign economic policy, international financial institutions, globalization and international education, and the history of globalization.

Morris has a M.A. and Ph.D. in International Relations and International Political Economy from Emory University. His B.A. is from Tulane University where he majored in Russian and Political Science with a specialization in International Relations. He has studied Russia at Moscow State University – Lumumba Institute where he received a Certificate in Russian Language & Culture, and at Tsinghua University in Beijing, China, where he studied Chinese and economics.

Town Center becomes new parking area for KSU

Carolyn Grindrod
NEWS EDITOR

Talks of Town Center Mall becoming a parking spot for KSU commuters were finalized last week as the Parking and Transportation Committee voted to include the mall as a new parking option for Fall 2011.

Students who opt to park at the mall will not have to pay the parking permit fee.

"We will have at least 700 more [parking spots] at Town Center Mall, to be used in conjunction with the shuttle service, which is how we will provide adequate parking for students next fall," said Parking and Transportation Services Director Beth Tindel.

Tindel said the committee voted

to offer the spaces at the mall at no permit cost so students who sign up to park at the mall will only pay the \$60 mandatory parking fee and will save \$70 on the permit fee for next fall.

The optional parking permit fee, an institutional fee that helps pay for the cost of parking passes and identification services, is currently \$50, but will increase to \$70 in Fall 2011. The increase is to help pay for the addition of the shuttling services on and off campus.

Tindel said students who decide not to park on campus will still be able to opt out of the parking fee.

Last semester, Tindel said parking on campus has become an issue in recent years even with the recent addition of the Central Deck, and that parking trends have changed as more

and more students – primarily commuters – stay all day on campus.

"In previous years, we usually see parking spaces rotate three or four times a day," said Tindel. "That simply isn't the case anymore. As students take all day classes, we're seeing parking spots rotate maybe one or two times a day. We do regular counts to see what parking is like on campus, and there was one day [in Fall 2010] that there were six spaces left and that's scary."

To help alleviate some of the parking woes on campus, Parking Services added the Town Point Shuttle this semester, which Tindel said added 364 commuter parking spaces at an office located across from the main campus at Town Point.

Shuttling services are currently free to anyone with a KSU ID.

Health Services supports campus smoking ban

Carolyn Grindrod
NEWS EDITOR

Student Health Services Director Anne Nichols spoke to the Student Government Association on Feb. 24 and told the group that Health Services was "1,000 percent" behind KSU becoming a smoke-free campus.

"We would love to see a smoke-free campus," said Nichols. "But do we think that is something that can happen over night? No."

Nichols spoke to SGA as requested by the Health Information Management Committee, a group SGA created to examine the current smoking policy on campus and explore the feasibility and support behind KSU becoming a smoke-free campus.

Nichols said there were several

factors in supporting a smoke-free campus, and that the committee should take them into consideration when deciding the future for KSU.

"We believe strongly and we have the medical documentation to support us that smoking contributes to disease. It contributes to heart disease and lung disease," said Nichols. "We know that it increases health care costs."

Nichols said that all KSU employees who smoke have seen a \$50 increase in their monthly health insurance premiums starting in January of this year.

The committee has been looking into other schools' smoking policies, such as the University of Kentucky, which has banned smoking on campus.

SGA Senator and Committee Chair Jacob Sluder said a smoke-free campus wasn't the only option the committee was looking into. Alternative options include keeping the current smoking policy, working on better enforcement of the current policy, relocating designated smoking areas or reducing the number of designated smoking areas.

Sluder said the committee plans on conducting a student poll via Owl Express so that students would get to vote on the smoking policies, much like they did with football last semester.

SGA President Ali Kamran said the committee plans on highly advertising the student poll and that voting would take place after spring break, during the last week in March.

CHANDLER continued from Page 1

Arts for the university. Chandler has been a professor in the School of Exercise, Leisure and Sport at Kent State since 2001 and joined the university in 1991.

Prior to Kent State, Chandler taught at Syracuse University and has been a visiting lecturer in the School of Physical Education, Sport and Leisure at De Montfort University, Bedford, UK.

Chandler holds a Ph.D. in education/physical education from Stanford University.

Chandler will be assuming the role of the provost and vice president for academic affairs, which is the chief academic officer of the university and reports to the president. The provost serves as a senior member of the president's leadership team,

chairs the university's Deans' Council and leads the faculty in their efforts to strengthen academic programs and foster a culture of academic excellence and community.

Currently, Ken Harmon, the dean of the Coles College of Business, has been acting as the interim provost and vice president for academic affairs.

The search process for the new provost began in August 2010, when Papp appointed the 20-member provost search committee. The search was conducted to fill the vacancy formed by the departure of KSU's former provost, Lendley C. Black, who stepped down in July after being named chancellor of the University of Minnesota-Duluth. The committee was comprised of KSU

faculty, staff and students, as well as a member of the KSU Foundation board of trustees.



Dr. Timothy J. L. Chandler

POLICE BEAT

Veteran arrested

A gray Nissan Altima was pulled over for failing to maintain lane on Feb. 12 around 2:45 a.m. The driver stated she had two drinks and her last one was around midnight. She agreed to a voluntary field evaluation and tested positive for alcohol. She submitted to a field sobriety test and blew into an alcohol sensor again. Around 3 a.m. she was placed under arrest for DUI and asked the officer if she could go because she was an 8-year veteran and was almost home. Police took her to the Kennesaw Police Department where she tested with a blood alcohol concentration of 0.101 grams. The driver was transported to the Cobb County Adult Detention Center and issued a UTC for failure to maintain lane and DUI.

No break for the underage

Police conducted a traffic stop

after a silver Kia Sorento was seen driving with no headlights, failing to maintain lane, and failing to stop at a stop sign on Feb. 12 at 3:30 a.m. As police approached the vehicle, they observed the driver fumbling around in the center console. The driver rolled down her window and police smelled a strong odor of alcohol. Police asked the driver if she had been drinking to which she said, "I have had no alcohol at all." She stated that she was 18 years old and three female passengers said they were 18 also. The driver's license was for a 19-year-old female and the driver then explained that the license belonged to her friend's sister and that she had lost hers somewhere in the car. Police found out that the driver was 17 and none of the occupants were students. They all submitted to voluntary field evaluations and were tested for alcohol. Two passengers were

underage and police transported them the Kennesaw Police Department to be held until their parents were notified to come pick them up. Another officer transported the two remaining females to the Kennesaw Police Department for breath tests. One of them tested positive with a blood alcohol content of 0.175 grams, and the two females were taken to Cobb County Detention Center and issued citations. The driver was issued citations for driving with no headlights, failure to maintain lane, driving in violation of Class D license, underage possession of alcohol by consumption, DUI of alcohol, giving an officer false information and a verbal warning for failing to stop at a stop sign. The car was impounded and the stop was captured on video.

Alien baggie

Police were dispatched to University Village after an RA thought he smelled the odor of burnt marijuana on Feb. 15 around 12:20 p.m. As police were walking down the hallway, two males came out of the stairway and police stated that the males immediately stopped and looked startled upon seeing them. Police told the males to put their hands on the wall for a weapons check and the males

complied. Police asked them if they would empty their pockets and one of them pulled out a small plastic baggie with black alien figures on it. The male said he had smoked marijuana earlier and allowed police to search his apartment. Police found two pipes and a marijuana grinder. No arrests were made and police gave the RA the case number.

Sorry, want Chinese food?

Police were dispatched to Parking Lot D regarding a hit and run on Feb. 15 around 9 p.m. A witness told police he saw a minivan back into a green Volkswagen and then drive away. Police found a note on the windshield of the Volkswagen that read, "I am terribly sorry," with a phone number on it. Police called the number and were connected to a woman who delivered Chinese food who said she had no knowledge of the incident. The driver of the Volkswagen was notified using her parking hang tag number and met police at the car. A GA Uniform Motor Vehicle Accident form was completed.

A couple of beers...

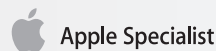
On Feb. 19 at 12:15 a.m. police responded to University Village Suites in reference to an intoxicated person. Upon arrival they met

with an RA who said a male had been wandering the hallways and appeared to be intoxicated. The RA said the male had tried to enter a female's apartment and touch her inappropriately, and that the female left before police arrived. Police located the male and said he was slurring his speech and swaying side to side. The male stated that he was visiting his brother and he had "a couple of beers." Police arrested the male for underage consumption and issued a criminal trespass warning. Police said the male began yelling and became very belligerent during the ride to Cobb Adult Detention Center and had unbuckled his safety belt. Police said the male became combative with Cobb ADC personnel and was assisted to the ground and restrained with no known injury. The event was captured on video and attempts to contact the female involved were unsuccessful.

The Scream

On Feb. 19 around 2:45 a.m., police responded to KSU Place after an RA advised dispatch that he heard a female scream, but was unsure of where the scream came from. Police checked the area and found nothing unusual. The RA on call was advised of the situation.

—Compiled by Michelle Babcock



Mac is now near campus

PeachMac is now open at The Avenue West Cobb



# of Mac/Apple Products	1,300	4th Year of AppleCare-Free*	Yes
Educational Discounts	Yes	Authorized Service	Yes
6 mths same as cash financing	Yes	Free Tech Support	Yes
PeachPlus Training & Support	Yes	Free Service Loaners**	Yes
Trade-in & Upgrade program	Yes	25+ years of Mac expertise	Yes

cool products. great service. amazing values.


peachmac

ipads • macs • ipods • software • service

The Avenue West Cobb (near Barnes & Noble)

678-384-8550 • peachmac.com

Marietta • Macon • Athens • Augusta • Peachtree City (coming soon)

*covers labor only in year 4. **Free loaner available to PeachMac customers who purchase a Mac with AppleCare.

THE SENTINEL SPRING 2011

THE SENTINEL IS A DESIGNATED PUBLIC FORUM. STUDENT EDITORS HAVE THE AUTHORITY TO MAKE ALL CONTENT DECISIONS WITHOUT CENSORSHIP OR ADVANCE APPROVAL. INFORMATION PRESENTED IN THIS NEWSPAPER AND ITS WEB SITE IS IN NO WAY CONTROLLED

EDITORIAL BOARD

EDITOR IN CHIEF CAITLYN VAN ORDEN
 eic@ksusentinel.com

NEWS EDITOR CAROLYN GRINDROD
 newseditor@ksusentinel.com

OPINION EDITOR TONY SARRECCHIA
 opinioneditor@ksusentinel.com

ARTS & LIVING EDITOR NIKKI HOPE
 artseditor@ksusentinel.com

SPORTS EDITOR JACK MORBITZER
 sportseditor@ksusentinel.com

PHOTO EDITOR PATRICIA CHOURIO
 photoeditor@ksusentinel.com

CHIEF COPY EDITOR MALLORY BREWER

STAFF

PRODUCTION MANAGER DEBBI LITT

PRODUCTION ADEOLU ADEBAYO, DANIEL HAIRE, VANESSA JENKINS, BRITTANY WIRSIG

WEB EDITOR RYAN SCHILL

ADVERTISING MANAGER ELIZABETH DIXON
 admanager@ksusentinel.com

STUDENT MEDIA MARKETING COORDINATOR AMIE FOX
 marketing@ksumedia.com

STUDENT MEDIA ADVISER ED BONZA
 adviser@ksumedia.com

Letter Policy

- 1.) The Sentinel will try to print all letters received. Letters should be, at maximum, 250 to 300 words long. Exceptions are made at the discretion of the editors. We reserve the right to edit all letters submitted for brevity, content and clarity.
- 2.) The writer must include full name, year and major if a student, professional title if a KSU employee, and city if a Georgia resident.
- 3.) For verification purposes, students must also supply the last four digits of their student ID number and a phone number. This information will not be published. E-mail addresses are included with letters published in the web edition.
- 4.) Contributors are limited to one letter every 30 days. Letters thanking individuals or organizations for personal services rendered cannot be accepted. We do not publish individual consumer complaints about specific businesses.
- 5.) If it is determined that a letter writer's political or professional capacity or position has a bearing on the topic addressed, then that capacity or position will be

- identified at the editor's discretion.
 - 6.) While we do not publish letters from groups endorsing political candidates, The Sentinel will carry letters discussing candidates and campaign issues.
 - 7.) All letters become property of The Sentinel.
 - 8.) All comments and opinions in signed columns are those of the author and not necessarily of The Sentinel staff, its advisers or KSU and do not reflect the views of the faculty, staff, student body, the Student Media or the Board of Regents of the University System of Georgia. Columns are opinions of only the columnist. They do not reflect the views of The Sentinel, but instead offer a differing viewpoint.
- The Sentinel is the student newspaper of Kennesaw State University, and is partially funded through student activity funds.
- The Sentinel is published weekly (Tuesdays) during the school year. First three copies are free; additional copies are \$1.00.
- No part of The Sentinel may be reproduced without the express written permission of the editor in chief.

Contact Us.

Mail
 The Sentinel
 Bldg. 5, Rm. 277, MD#0501
 1000 Chastain Road
 Kennesaw, GA. 30144-5591
 Student Center 277

Phone
 Editorial 770-423-6278
 Advertising 770-423-6470

Email
 sentinel@ksumedia.com

Online
Editorial
 www.ksusentinel.com

Advertising
 ksuids.com

Follow us
 twitter.com/ksusentinel

Libertarians: It's time to grow up



Justin Hayes
 Senior Columnist



Eric Celler
 Guest Columnist

It may not be kosher to ask self-proclaimed libertarians to question their political philosophy, but it is necessary for one to be intellectually honest. Libertarian activist organizations such as Campaign for Liberty and Students for Liberty have tried their best to convince as many people (voters) as possible that they were unaware of their belief in the libertarian cause.

However, libertarianism is not simply a love of freedom or a rejection of responsibility. It is the recognition of yourself as an individual in your proper nature and everything that follows from it; that is, you have a right to your life and your

“Libertarians will not win the battle of ideas by handing out pamphlets and 10-question political quizzes.”

liberty. With these rights, however, comes great responsibility.

In the libertarian system of ethics, it is a moral imperative that people have the ability to make

rational choices in order to promote their lives. Yet, this does not mean that every choice one makes is necessarily rational or moral.

Let's be clear: Libertarianism is not libertinism. Many libertarians have arbitrarily adopted the label with the misconception that it grants them a level of hedonistic latitude. This is certainly not the case. Libertarianism is a disciplined and rigorous intellectual commitment to a philosophical system, holding one's life as the highest moral value. Anything that inhibits one's life is immoral.

Although you have the freedom to choose and pursue certain activities that may lead to the destruction of your mind or your life, it does not mean that these actions should be held as moral.

We may agree that it is your right to consume mind-altering drugs or even gasoline, as you have committed no violence towards the life or liberty of another. However, because you have chosen to participate in an act that leads to your self-destruction, you have negated the value of your own life and thus abandoned the principles of libertarianism. You have chosen not to live.

Coupled with the idea that libertarianism is simply a love of freedom is the strange notion that it characterizes a hybrid of fiscal conservatism and social liberalism. This has essentially diluted the entire philosophy by mixing principles, allowing people to take what they “like” from the left and the right to create a hodgepodge of moral grayness. Many who ascribe to this popularization of libertarianism are operating in a contradiction of premises, leaving them unable to justify themselves.

It's time for the libertarian movement to grow up. Stop whim worshiping. Stop relativizing morality by whitewashing with the simple excuse of “freedom.” Libertarians will not win the battle of ideas by handing out pamphlets and 10-question political quizzes. They will do so by recognizing the gravity of their ideas and accepting the consequences honestly. The failure of popular libertarianism has proven the need to shake off the yolk of adolescence and mature into the serious intellectual movement it deserves to be.

Gun-free zone equals target-rich environment



Alessandra Turner
 Senior Columnist

KSU is a gun-free campus. We are matriculating and many of us are living in a gun-free zone. Some of us are being raped, aggravatedly assaulted and burglarized in a gun-free zone. Sentinel writer Meg Hand recently went on a ride-along with campus police and in her column last week wrote that she saw something very “frightening” in the campus station: firearms.

Ms. Hand wrote that “no one wants their roommate” to have a gun in the dorms. I wonder if those KSU women who were forcibly raped in their dorms feel the same way. I wonder if “no one,” as Ms. Hand wrote, or, in fact, most people would feel safer if allowed to be armed in their own homes, whether those homes be KSU dorms or not.

The fact is that when you think of gun related tragedies—Col-

GUN-FREE continued from page 5

umbine, Virginia Tech or the recent Arizona shootings—you are thinking about tragedies that happened in gun-free zones. You are thinking about places where honest, law-abiding citizens were hurt and/or killed as they congregated like so many sitting ducks, defenseless, in known gun-free zones—in known defense-free zones.

The “frightening” thing at KSU is not the few guns held in the KSU police station but the tens of thousands of students who take their bodies and lives into their own hands to matriculate and live here, at our defense-free campus.

KSU as such is a known defense-free zone (which is a wonder in itself as Kennesaw was once called “Gun Town USA” for its, at one time revolutionary, ordinance requiring all citizens to be armed in their own homes). After the Virginia Tech massacre it was reported that Kennesaw’s crime rate had “plummeted” immediately after the gun requiring ordinance was passed and had stayed low, perhaps the lowest in the metro Atlanta area, for the 29 years since its inception. Further it was reported that the

town in Illinois, whose ordinance banning gun ownership led to Kennesaw’s opposite ordinance response, had seen a sharp increase in crime since it forbid residents to own them.

You will never successfully unarm the bad-guys and you will never successfully unarm the world, but you can and do successfully create sitting ducks out of KSU students when you require them to live in a defense-free zone. So congratulations, KSU Police Department,

on your six on-campus weapons violation busts between '07 and '09, and may we hope you have the same success in busting those responsible for the 135 reported motor vehicle thefts, burglaries, aggravated assaults, forcible fondlings and forcible rapes.

The “frightening” thing at KSU is not the few guns held in the KSU police station but the tens of thousands of students who take their bodies and lives into their own hands to matriculate and live here, at our defense-free campus.

Letters to the Editor

Re: Those who are executed murder themselves

I wholeheartedly agree with Ms. Largent when she says that people’s choices are their own and that choices have consequences. However, just because someone knows the consequences of their actions does not make the consequences right by default. In other words, two wrongs don’t make a right.

When Rosa Parks refused to leave her seat she knew that she would be arrested. Her prior knowledge of those consequences did not make the arrest okay. Using the same argument that Ms. Largent used to justify the killing of Emmanuel Hammond, Rosa Parks arrested herself because she knew she would be arrested.

While Rosa Park’s so-called “crime” and the crimes of Emmanuel Hammond are in no way on the same level, the principle is the same. Both

Rosa Parks and Emmanuel Hammond both knew the consequences of their actions, but this does not make the consequences they received morally right.

An easy way to decide whether the government has the “right” to do something is to ask yourself, “Do I have the right to do it?” We are all individuals and no individual has more rights than another. This is the core of libertarianism - if you or I cannot do something, neither can the government. If it is wrong for an individual to kill in retaliation, it is wrong for the government.

Zach Varnell
Information Security and Assurance
Class of 2012

Mock Trial deserves coverage

I visited your campus for the first time this past Friday to participate in the Dr. Helen S. Ridley Regional Mock Trial Tournament as a presiding judge.

I hope that you will take the opportunity to feature the KSU Mock Trial organization sometime in the near future.

They are a prime example of achievement-oriented young people who are developing their skills in analytical and critical thinking, while sharpening their communications skills.

I had the privilege to preside over one of the rounds in which the KSU (Defense) team competed, and found them to be prepared, articulate, and effective, individually, and as a team. They think well on their feet, and KSU should be quite proud of them. Kudos to their coaches, as well.

As a member of the legal profession for some thirty years now, and having been involved with mock trial as a judge and coach, I like to think that I recognize talent when I see it. They have it! I know these activities do

not usually attract the attention or the coverage which is reserved for “sports” competitions.

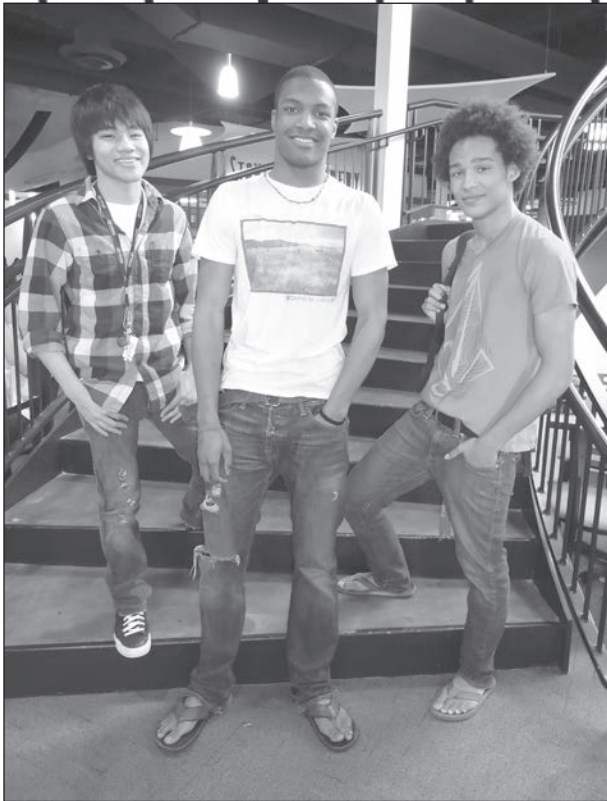
However, when you think about it, these students are the ones who will be shaping our society for their, and future generations. They speak well for your institution.

John G. Cicala, Jr.
Attorney At Law
Stone Mountain, Georgia



SPRING

into fashion



Freshmen Vincent Thai, Eli Wynter and Shabazz Farmer



Freshman Morgan Topper



Senior communication major Andrew Brown

Dané White | The Sentinel

Personally, I prefer colors and cuts over patterns and prints.

I like things that are chic with a little bit of edge.



Junior biology major Michelle Ihewunwa

Dané White
STAFF WRITER

Now that the season is changing, it's time to stuff those bland sweaters and pea coats into the bottom drawer. Ladies, pull out those floral chiffon tops and guys, don't forget to unpack your cargo shorts.

"I can't wait to wear dresses this spring," said junior Michelle Ihewunwa.

This season, fun vibrant colors and skinny jeans are a must for both men and women. Color block styles bring runway fashion into the lives of everyday students.

"My style is skater boy meets urban youth," said senior Andrew Brown. "I'm big on bright colored v-necks and Vans."

Sandals and wedges also take their place this season. Mixing them with spring scarves or denim jackets add a balance to the open toe trend.

"I'm looking forward to light jackets and capri pants or rolled up jeans," said junior Michaela Namynanik. "This kind of gives it that three-quarter feel."

Fashion is all about taking risks.

Experimenting with patterns and textures only enhances a wardrobe and gives it little flare.

"I wear a little bit of this and a little bit of that," said freshman Morgan Topper. "I dig printed tights with funky dresses."

Striped tees and button downs are key pieces this spring that can be paired with almost anything. Guys can wear this look with jeans or khaki shorts, while girls can pull it off with a simple pair of skinny jeans or even a flowy mini skirt for a more polished look.

Taking vintage pieces like acid washed jeans and mixing them with something modern—like a bright racerback tank—is both edgy and fun.

Whether it's fun and flirty or cute and comfy, fashion is all about expressing your personality. You can tell a lot about a person by the way he or she dresses.

"My style is funky," said Topper. "Not tacky, but funky."

No matter what your particular style is, it's safe to say that winter has come and gone and spring is here to stay, so shed those layers of clothing and jump into something a little more fun and carefree.



Senior English major Mary Block

DON'T BE A DRAG





Nikki Hope
ARTS & LIVING EDITOR

If you happened to be walking through the Student Center around 8 p.m. on Thursday, Feb. 24, you probably heard the bump-thump of the bass to Usher's single O.M.G. or Trey Songz hit Bottoms Up (featuring Nicki Minaj). Passing by University Room A your attention would've been grabbed by the purple and yellow streamers hanging from the doorway, and the crowd of students watching a girl in a pink tutu strut across the stage. At second glance, that isn't a girl, that's a guy!

Kennesaw Pride Alliance hosted its 4th annual charity drag show last week. It was the first time they have hosted the show on campus, and hundreds of students showed up to show their support. There were free t-shirts, Mardi Gras beads, flowered leis and safe sex information packets including a flyer entitled "Wrap Your Monster." There were tables set up across the room for the estimated 200 students, and at least 100 more chairs were added around for the massive turn out. There were even people standing against the wall the entire night.

The charity show benefited P.A.L.S Atlanta (Pets Are Loving Support). The money was raised through raffle ticket purchases, donations and by tipping the performers. All night long girls dressed as guys, and guys dressed as girls, performed and students were allowed to tip each individual dancer.

The charity was a huge success; it raised \$605 for P.A.L.S. Atlanta.

"We expect to raise much more at our off-campus drag show at Jungle on March 19," said Kennesaw Pride Alliance president Victor Ferreira.

For more information on the Kennesaw Pride Alliance or any of their upcoming events, visit kennesawpridealliance.com or like them on Facebook.



(Above) The "token straight boy" gets a lap dance for charity. (Right) "Ashton Cooter" performs to a popular Usher song. (Bottom Left) Hundreds of students cram into University Room A for the show. (Bottom Right) Things get steamy on stage during a performance.



Nikki Hope | The Sentinel



JUST BE A QUEEN

Getting to know your student athletes

Ashley Thompson
STAFF WRITER

You attend the games and keep up with the latest scores, but how well do you know your KSU athletes?

KSU's athlete pool is made up of a unique blend of talents and backgrounds, but each player shares a common bond: They are juggling practices, games and, most of all, schoolwork. Many of our athletes interviewed claimed that the best way for them to keep up with assignments and athletics was with a personal calendar.

"The biggest difference is the time commitment," said Chiquita Hawthorne, a track and field team member. "Being a student athlete in college is like having two full time jobs. While it is very demanding, it is also very rewarding."

Many athletes also noted that competing on the college level is much more challenging than competing on the high school level. Competition is higher and the schedules are more demanding than those of high

school sports.

"College sports are more demanding on your body than the high school sports," said track and field team member Drew Greeson. "Also the competition level is totally different."

Most athletes interviewed stated that they have to give up a lot of their social life to focus on completing assignments and being prepared mentally and physically for games. Many have limited social schedules and even limited time with family.

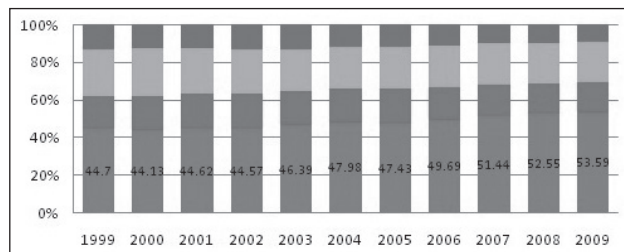
"The biggest challenge for me is being away from my family," said Sametria Gideon of the Lady Owls basketball team. "Some days I wish I could just go home and see my family but I know that school and basketball are my main focus at this point and time."

It stands to reason that KSU athletes are some of the most dedicated and focused individuals on campus. Being an athlete can be fun and rewarding, but it comes with its fair share of challenges that the normal student may not realize.

See PEAK Page 16

Percentage of different age groups of students enrolled from 1999 to 2009

■ Non traditional Student 24-29 ■ Older Students 40 +
■ Non traditional Student 30-39 ■ Traditional Student



This graph represents how KSU has been slowly changing into a traditional type of college over 10 years. A traditional student is defined as a person who is between the ages of 16-23.

From 1999-2009 there has been an almost 10 percent increase in traditional students, which is almost a 1 percent increase per year. This increase can be attributed to the fact that KSU has built University Place (2002), University Village (2004) and University Suites (2008) over the past 10 years to allow students to live on campus.

—Courtesy of the Sigma Alpha Kappa Statistics Club



"THE SMART MAN'S PIZZA"

NEW YORK PIZZA

\$4.99

STUDENT LUNCH SPECIAL

2 CHEESE SLICES & FOUNTAIN DRINK

Mon. – Fri. 11 a.m.-3 p.m.

*Must show student ID

**Not valid with other specials

10% OFF

for KSU Students and Faculty

*not valid with specials

LIVE ENTERTAINMENT

- **MONDAY:** Open Mic 9 p.m. \$50 cash for best artist
- **TUES:** 7.30 p.m. Texas Hold 'Em
- **WED:** Team Trivia 8 p.m. Prizes for first three placed teams
- **THURS:** "Tirsty Thursdays" \$1 drinks all day. Live music 9 p.m.
- **FRIDAY:** Live bands 9 p.m. Call for details
- **SATURDAY:** Team Trivia 7:30 p.m. Prizes for first three placed teams, followed by "Signature Saturdays" 9 p.m.-2:30 a.m. Ladies 18, Gentlemen 21... Get down to all the latest hits in Kennesaw's coolest environment!

600 Chastain Rd. • Kennesaw, GA 30144

770-424-9000

(Additional Parking at Embassy Suites)

think spring...think TOMS.



TOMS

One for One

kennesaw 2615 busbee parkway 770.423.0405

Info Line: 770.491.6775
facebook.com/coolshoesatlanta

abbadabba's
coolshoes.com



Su·do·ku

MAR. 1, 2011
11
DIVERSIONS

		5	4		
4				2	
			5		
				6	4
1					
		2	3		

SENTINEL CLASSIFIEDS

RATES: \$9 for the first 250 characters (about 40 words), 2¢ per additional character. Pre-payment is required. **DEADLINE:** Sunday midnight E.S.T. before the requested Tuesday publication. **TO PLACE YOUR AD:** Go to ksusentinel.com/classifieds. Problems? Call 770-423-6470.

FOR RENT/ROOMMATES

3005 Pine Hill Drive NW, Kennesaw, Georgia 30144. For rent by Owner - Residential 4 Bedroom, Recently reconditioned, 2 Bath, home with Dining and Living areas, Split Level, Brick with finished basement including Den and Fireplace, attached Garage with plenty of storage, includes Wash Room and Rear Deck. Full appliances connections including Washer & Dryer, Hardwood and Tile floors, located on quiet street on a large shaded lot, in Cobb County Schools District with Kennesaw College near by. \$1,100.00 per month plus deposits. For Appointments Contact: 404-933-2836 or 281-360-8262.

Large One Bedroom available near KSU. Utilities include cable, garbage, electricity and water for an extra \$150.00 per month plus \$50.00 for each additional person living in the apartment. There is a kitchen and a washer/dryer & microwave in the apartment. A second bedroom in the apartment is available if requested but will otherwise be looked off. Email anthony.oloni@gmail.com.

\$480 Room for rent-minutes from KSU. THIS HOUSE IS AVAILABLE TO RENT BY THE ROOM. The house has a total of 4 bedrooms, 2.5 bathrooms. Three bedrooms are available currently. PERFECT FOR SHARING! -Access to common areas -CABLE & INTERNET INCLUDED -Deposit is required -Microwave--Stove/Oven, Laundry Area -Swimming Pool, Tennis -Just Renovated -Gorgeous screen porch. GREAT LOCATION! Safe and Quiet Neighborhood. Minutes from shopping centers-Town Center Mall, I-75, and Kennesaw State University. Contact 404 429 9515 or e-mail papazova101@yahoo.com.

FOR SALE

Office Furniture Liquidation Sale. Mar 4th: 10am - 5pm. Mar 5th: 10am - 4pm. Chairs: \$5 and up. Desks: \$79 and up. File Cabinets: \$50 and up. And more! The sale will be at 3380 Town Point Dr. NW, Building 1, Suite 160, Kennesaw, GA 30144 and 4290

McEver Industrial Drice, Acworth, GA 30101. If you have any questions or need help with directions, please call 770-514-0822. www.gcsgroup.us.com.

PART-TIME HELP WANTED

Female Caregiver Needed: Part time to assist wheelchair bound female with daily living needs - personal care, meal preparation, cleaning. Requirements: CPR / First Aid Certification, Able to lift 100 lbs, Driver's license / reliable transportation, Clean criminal background, Live in Kennesaw area. \$10/hr. 678-438-5036.

CHILDCARE

Are you enthusiastic, dependable, flexible, and like to help others? Position provides life and social skills support to special needs teen. Candidate must be 19 or older and be willing to obtain First Aid and CPR certifications. Great opportunity as all other training is provided. Flexible hours available Monday thru Friday 4 pm to 8:30 pm. and Saturday and Sunday hours from 10 am to 6 pm. Hours can be job shared with another candidate. \$13.50/hour. If interested call 770-423-7039.

Grad student looking for an experienced babysitter for a 10 yr old and 7 yr old. Days and hours negotiable. Background check a must. Pay is great. Please email with questions or to set up interview. Only serious inquiries.. shanashelise@gmail.com.

JOBS: PT AND/OR FT

Nautix Pools is now hiring lifeguards in Cobb, Cherokee and Paulding counties for the 2011 summer season. Full time and part time positions available. Flexible hours and competitive pay! Apply online at www.nautixpools.com or contact lauren@nautixpools.com. 770-485-3672.

USA Pools: Now Hiring Lifeguards & Managers. FT/PT \$8.00-15.00/hr DOE. Seeking dedicated & enthusiastic applicants. Get paid to tan! Apply Now: www.usapools.com. 770-248-1872 x100.

MISC. SERVICES

Network Entertainment is hiring Movie Night Operators and DJ's for our summer/spring season. Will train qualified applicants. Great pay! Great fun! Must have truck, van, or SUV. 770-319-8822

Do you speak Spanish and interested in a part-time job in promotions? We are looking for high

energy, competitive, bilingual personnel. Requirements: Must be 18 yrs. or older, have necessary means of transportation, and like working with people. We offer competitive pay and are flexible with school schedules. Job may require some travel. Contact: edith@amerimex.com or call 770-235-4573.

ANNOUNCEMENTS

PHICON (Public Health Informatics Consultants) is sponsoring a new nationally recognized introductory certification course in electronic health records technology (CEHRS). January 2011 is when federal and state governments start the implementation of Electronic Medical Records nationwide. There will be an unprecedented need for Certified Electronic Medical Record Specialists. Improve your job prospects by transitioning into a career that helps medical practices and hospitals transition from paper based medical records to electronic medical records by receiving the Electronic Health Records Specialist (CEHRS) Certification. The PHICON Institute for Health Informatics is offering a 10 week nationally recognized certification course (NHA Certification). The Certified Electronic Health Specialist course is recommended for the following groups or individuals: 1. Electronic Medical Record champions, helping hospitals and physician practices to implement new systems for their facilities 2. Graduates of university health informatics programs planning to specialize in Electronic Medical Record Implementation 3. Individuals with a health or information technology background looking to begin a career in health information technology. Classes are ongoing. The next online class starts on the March 7, 2011. There are scholarships, financing and tuition funding available if you qualify. For more information, please visit <http://phiconcorp.com/institute/1017AO/>. Enrollment Specialist Public Health Informatics Consultants Atlanta (PHICON).

BUYER BEWARE! There is no substitute for closely examining any offer. If it sounds too good to be true, chances are it's a scam. Please check all offers BEFORE sending money or personal information. Consider it a warning sign if you must buy something in order to start the program. For a reliability report on a specific company or offer, check first with your local Better Business Bureau. www.bbb.org.

Ooowl Snap!

The staff of The Sentinel wants to see your best shots. If you have a KSU photo, whether it's you and your friends painted up at the hockey game or an artistic shot of the Wilson Building, we want to see it. Post it on the wall of our Facebook fan page ("KSU Sentinel") and let us know who took it and what's going on in the shot. Each week, we'll select the best photo and print it in "Diversions."



(From left to right) Shannon Roche, Jessie Hardegree and Ashley Lamb pose at the Owls Making Strides 5K for breast cancer on Feb. 26.

Submitted by Jessie Hardegree



Follow us on Twitter for daily updates!
[@KSUSentinel](https://twitter.com/KSU Sentinel)



Like our fan page on Facebook!
facebook.com/ksusentinel

Solution

1	4	3	2	9	5
2	5	6	3	4	1
4	6	2	1	5	3
3	1	5	4	2	9
5	2	1	6	3	4
6	3	4	5	1	2



Jack Morbitzer | The Sentinel

Sophomore first baseman Ashlee Burkett stretches at first base to catch the throw Saturday against Bowling Green State University. The Owls beat the Falcons as well as the Mississippi State Bulldogs and Tennessee State Tigers as hosts of the Phyllis Rafter Memorial. KSU plays in another tournament this weekend at the same complex, hosted by Georgia Tech.

Softball wins three straight in tournament

Jack Morbitzer
SPORTS EDITOR

After dropping the first game of the Phyllis Rafter Memorial Friday to Ball State, 6-3, KSU softball used two home runs to beat Mississippi State, 3-2, a timely sixth inning rally to defeat Bowling Green, 3-1, Saturday and pummeled Tennessee State, 12-2, from the start Sunday.

"I'm real proud of the team," head coach Scott Whitlock said Saturday. "It's been a tough week and this team has shown it's resiliency and that they can play up when they need to."

The final day of the tournament in Woodstock, Ga. saw the tournament hosts KSU play Tennessee State.

As the visiting team, the Owls started the game with a huge inning scoring six runs on five hits.

Lead-off batter sophomore center fielder Sara Sikes singled and stole second to start the inning followed by sophomore first baseman Ashlee Burkett being hit by a pitch and sophomore left fielder Sharon Swanson singling to reach safely. The next two batters also singled

scoring Sikes and Burkett to secure a two run lead for KSU.

With one out and the bases loaded, junior third baseman Brittany Moore faced a 0-2 count. The next pitch was driven over the left field fence for a grand slam and the damage was done as the Owls led 6-0.

Sikes led off the second inning and was hit by a pitch. Two batters later Swanson cranked her sixth home run on the season over the center field fence and KSU was up 8-0. Freshman Bianca Durant singled and after a Vollmer walk, Moore singled to center scoring Durant to extend the lead.

Sophomore starting pitcher Abbey Meixel then struck out two more Tigers to continue her dominating performance. Meixel was credited with the win as she pitched five complete innings and gave up two earned runs on three hits with eight strikeouts and one hit batsmen.

Swanson scored again in the fourth after singling to start the inning. In the top of the fifth Swanson again reached on a single, going 4-for-4, and Durant, who went 3-for-4, smacked a two-run

home run to push the lead to 12.

In the bottom half of the inning, Tennessee State got on the board with their only two runs coming off a hit batsmen followed by a two-run home run. It was not enough to keep the game going as it was finished by run rule.

Saturday, KSU didn't have the same level of offensive production but used strong starting pitching and timely hits to come away with victories.

"Very proud of the day we had," Whitlock said after Saturday's two wins. "It started on the mound, we pitched great today. We played solid defense behind them and we hit just enough."

In Mississippi State's last chance at the plate, the lead-off batter singled to right to start the top of the seventh inning. Pinch hitter Briana Bell ripped a line drive down the right field line scoring MSU's Jessica Cooley. Durant ran down the ball in the corner and relayed to sophomore second baseman Jensen Hackett who turned and threw out Bell trying to stretch the knock into a triple. The tying run was now at the plate and not on the bases and with two

outs junior starting pitcher Jessica Cross forced a ground out to end the contest, 3-2.

In bottom of the third inning the Owls were down 1-0. Cross reached first base with two outs after hitting a bloop single over the shortstop in shallow left field. Swanson then drove a 2-1 pitch completely over left field, including the fence, for a two-run home run.

"I'm just seeing the ball really well this year," Swanson said. "I think that's the biggest difference, pitch selection and seeing the ball well."

The sophomore finished the tournament hitting 9-for-12 with two home runs and four RBIs.

Mississippi State came back in the top of the fourth and singled twice to start the inning. The next batter reached on a fielder's choice and after a strikeout by Cross, a walk loaded the bases with two outs. With a full count, Cross forced MSU's Brittany Gates to hit a grounder back to the pitcher's circle to end the jam.

KSU added their final run to the scoreboard with a two-out, full count solo home run by Moore in the bottom half of the fourth. The

Owls threatened in the bottom of the fifth with runners on second and third but the Bulldogs forced a ground out to end the inning.

Cross pitched a complete game giving up two earned runs on six hits, with six strikeouts and a walk. Earning the victory she improved to 5-1 on the season. Cross also went 2-for-3 at the plate being the only Owl with multiple hits in the game.

Each team had six hits and an error a piece.

In the second game of the twinight doubleheader the Owls faced the Bowling Green Falcons. Tied 1-1 in the top of the sixth, BGSU threatened.

The lead-off batter reached on a single and another batter reached on a single with two outs. With a 2-2 count, Bowling Green's Missy Bowman cracked a towering ball deep to right field that hugged the foul line and stayed just inside the fence as senior right fielder Lyndsay McCurry made the catch in foul territory to end the Falcon's only threat in the final four frames.

KSU responded when Moore

Baseball drops series against Memphis Tigers

Freeman stands alone with nation's longest hit streak

Jack Morbitzer
SPORTS EDITOR

Baseball hosted the Memphis Tigers in a three-game home stand Friday through Sunday and lost their first two games of the season as bookends to an eighth inning victory.

Saturday, junior Andy Chriscaden used a solo home run to right field to lead the Owls (6-2) over the Tigers.

"You couldn't ask for anything more from Andy," head coach Mike Sansing said in a statement. "He gave us a huge, huge hit. He stayed with a tough pitch and hit one well to the opposite field."

Senior second baseman Sean McClurken was KSU's first run as he crossed the plate in the first inning. Sophomore catcher Ronnie Freeman recorded the RBI double for a hit in 36 consecutive games. In this series Freeman extended his hitting streak to 37 games, the longest in the nation, after Old Dominion's Chris Baker was 0-for-4 against Wright State, ending his streak at 34 games.

In the top of the fifth, senior starting pitcher Bryan Blough gave up the first run after the first two hits, a double and RBI single. Blough threw five complete innings giving up one earned run on two hits with three walks and four strikeouts. Alan Busenitz came in relief at the top of the sixth and gave up only one hit with a walk as his lone strikeout got him out of a bases loaded jam. J.B. Johnson recorded the save, but it didn't come easy as a lead-off single put the tying run on base and a sac bunt moved the runner to second. After a strikeout, the next batter was intentionally walked before Johnson forced a line drive to third base that was caught for the final out.

In the Owl's first loss of the season Friday general errors plagued KSU throughout the game, but they were still in position late to tie.

In the eighth inning Freeman walked and Chriscaden recorded a RBI double to bring the Owls within one. Senior Drew Fowlkes then doubled to bring in Chriscaden. The next batter, sophomore shortstop Peyton Hart, was hit by the pitch and the go-ahead run was on base. McClurken then struck out to end the inning and KSU could not rally again in the bottom of the ninth.

"We were disappointed in all

phases of the game [Friday]," Sansing said in a statement. "We didn't pitch well, fielded poorly and our bats were without a plan. With that many mistakes I was surprised that we were able to make a run and have a chance to tie the game. We're always going to compete mentally, but physically we weren't there tonight."

Memphis starting pitcher Dan Langfield dominated in his outing and struck out 16 Owls.

Freeman singled in the first inning to continue his hit streak.

KSU did not help themselves much as junior starting pitcher Josh Carr walked five batters in three innings. Carr only gave up one earned run, but three errors allowed two unearned runs. The Owls had six total errors on the night with eight walks and three hit batsmen.

The Tigers scored in the first inning on an RBI single. KSU scored two runs of their own as Chriscaden singled to left field and Hart singled to right field.

Memphis tied the game in the fourth inning and took the lead in the fifth as Langfield found his groove.

From there the Owls threatened late but couldn't stay unbeaten.

Sunday KSU used the long ball again to lead, but couldn't contain the Tiger's Jacob Wilson who hit two home runs with 7 RBIs in the Owl's second loss of the season, 13-7.

"I feel like we are inconsistent right now," Sansing said in a statement. "After we hit the home run in the second inning we didn't do anything to put any pressure on their pitcher and after their first big inning we didn't make it difficult on them at all offensively."

After Chriscaden singled and senior leftfielder Bucky Smith walked in the bottom of the second inning, junior center fielder Will Howard hit a three-run home run to give the Owls an early lead.

In the third inning Freeman singled to left field, keeping the nation's longest hitting streak alive at 37 games.

The score remained the same until the top of the fourth when Memphis opened their scoring. The lead-off batter doubled and advanced to third on a bunt in which the batter reached first base safely. Wilson then drove the first pitch he saw over the center field fence, tying the score. The

next batter followed with a home run to right field and the Tigers led 4-0. The next batter singled and eventually scored on an RBI ground out and Memphis had five runs on five hits.

Things remained even until the top of the seventh when the first two Tigers reached on a walk and hit batsmen. A sacrifice bunt advanced both runners and a sacrifice fly brought in the lead runner. Two RBI singles brought in two more

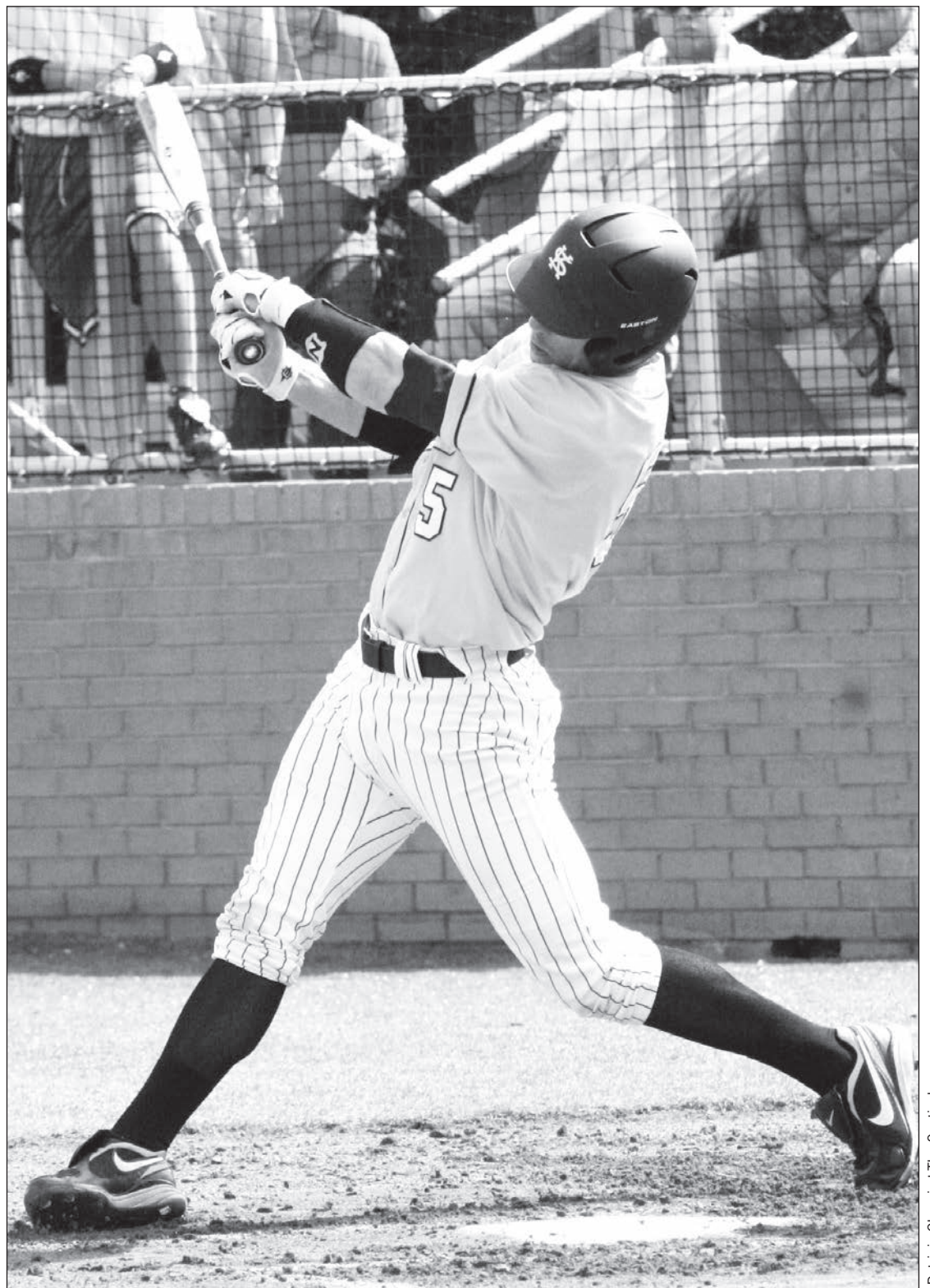
runs for Memphis.

The Owls went down in order before Memphis scored four more runs in the eighth. With the bases loaded, Wilson homered for the second time, recording a grand slam and scoring all of the Tiger's runs in the inning.

It wouldn't be until the bottom of the ninth when KSU started to make something happen. Smith was hit by a pitch and Howard singled up the middle bringing

junior right fielder Jordan Craft to the plate. Working hard to get a rally started, Craft blasted a three-run home run to right center field and cut the lead to six. The momentum couldn't carry as the final out came in the form of a line drive to right field.

KSU has the week off before opening conference play in Stillwell Stadium as they host the Campbell Camels Friday at 4 p.m. and Saturday at 1 p.m.



Junior third baseman Aaron Dobbs swings away for KSU Sunday against the Memphis Tigers. The Owls dropped their first game of the season Friday, and lost their first series of the season after Memphis used timely rallies Sunday to go home victorious.

Lady Owls lose late Bruins rally in final minutes to win, KSU still No. 7 seed for A-Sun

Daniela Duron
STAFF WRITER

The Lady Owls were defeated by the Belmont Bruins, 50-47, in their last game of the season Saturday.

KSU held the lead for most of the game, with the help of sophomore guard Ashley Holliday's 18 points, and kept it until Belmont took over with less than a minute left. The loss gives KSU the No. 7 seed and they will face Stetson heading into this week's Atlantic Sun Conference Championship.

"You always want to go into a tournament on a winning note," head coach Colby Tilley said. "Our players have faced adversity all year long and they responded in most instances. This hurts and it hurts because of the way we lost it. We just have to start to get back to work Monday. But a loss like this does hurt."

The game started out slow, with the score tied at 2 for the first 5 minutes of the game. After that, KSU held their lead for the rest of the first half, extending to a ten-point lead with 6:11 left, before a 27-20 score at the break.

The Lady Owls led the entire second half until Belmont took over with just 47 seconds left. KSU didn't score during the last 5:11 minutes of the game,

and the Bruins took advantage of that, and ultimately took the lead and secured the game with junior Haley Nelson's layup.

"I thought we did a great job defensively up until the last three and a half minutes of the game," Tilley said. "The game is 40 minutes long and I thought we played 36 good minutes. We made three mistakes in a row that they capitalized on and that hurt us."

Holliday led her team with 18 points and was the only Lady Owl to score in double digits. Sophomore forward Sametria Gideon shot 7-8 from the free throw line, while junior guard Angie Smith led both teams in steals with five.

"It's unfortunate that we lost the last game going into the tournament," said Holliday. "We just have to bounce back; we know what we have to do next week, so we really just have to bounce back quick."

KSU faces Stetson, a team the Lady Owls struggled with.

"Stetson beat us twice in the regular season," Tilley said. "They've got a very good team, they've got a good inside game, and they've got really good guards as well. It's going to be a challenge for us to get past that first round because they are a second seed for a reason, so we're going to have to play hard."

The matchup is scheduled for Wednesday at 6:30 pm and can be seen on ASun.tv.



Patricia Chourio | The Sentinel

Owls junior guard Spencer Dixon dribbles into the half-court offense Saturday against Belmont. KSU lost their final five games of the season but still make the conference tournament and play Wednesday.

Owls thumped

Michael Foster
STAFF WRITER

KSU men's basketball team suffered a one sided defeat Saturday falling to the Belmont Bruins, 88-41 on senior night.

Kelvin McConnell, a senior guard from Smyrna, and Matt Heramb, a senior forward from Douglasville, were honored before the game in front of the home fans.

The Senior Night festivities during pregame turned out to be the highlight of the night for the Black and Gold, as the Atlantic Sun Conference leading Bruins ran away with the contest before halftime.

Belmont jumped on top 8-2 within the first few minutes of play. However, KSU retaliated to take a 9-8 lead with 11:42 remaining in the first half, thanks to a three pointer from junior guard Spencer Dixon and free throws from Dixon and sophomore forward Markeith Cummings.

That was the only lead for the Owls during the game, as Belmont took a commanding 39-16 halftime lead.

Not a single player for KSU eclipsed ten points for the night, as sophomore forward Aaron Anderson and Cummings tied for

the team high with 8 points.

"I've never been through a game like that," head coach Tony Ingle said after the game. "I thought that their defense really bothered us, and we just had too many turnovers."

The Owls certainly struggled holding onto the basketball the entire evening, especially in the second half, as the team accounted for 22 turnovers.

While the loss stings, the Owls (8-22, 6-14) will still compete in the A-Sun Conference Championship, beginning Wednesday.

Most likely, KSU will face off against Belmont in the first round game, considering the Bruins have clinched the top seed in the tournament with a nearly flawless 19-1 conference record.

"Even though things didn't go according to plan, we still live to fight another day. We're still in the tournament," said McConnell. "We've got to be ready to go next week, because it's win or go home."

Regarding KSU's struggles against the Bruins, Heramb added, "We know what we don't need to do."

The Owls will play their first round tournament game on Wednesday at either 2:30 pm against Belmont, or 9 pm against second seed East Tennessee State.

KENNESAW STATE Owls

BASEBALL

VS. CAMPBELL
FRIDAY - MARCH 4 - 4:00 PM
SATURDAY - MARCH 5 - 1:00 PM (DH)

ADMISSION IS FREE FOR ALL STUDENTS AND FACULTY!
WWW.KSUOWLS.COM

A-Sun Preview

Michael Foster
STAFF WRITER

Both the KSU men's and women's basketball teams will participate in this week's Atlantic Sun Conference Championship at Mercer University in Macon, Ga.

This is the second-consecutive year both teams made the conference tournament since becoming eligible for postseason play two years ago.

The tournament will be single elimination, pitting the top eight teams in the conference against one another, with the grand prize being a trip to the NCAA Tournament.

The Owls finished their regular season 8-22 overall and 6-14 in conference the A-Sun, and will play as either the eighth or seventh seed, facing off against either the No. 1 seeded Belmont Bruins (27-4, 19-1) or the No. 2 seed East Tennessee Buccaneers (21-10, 16-4).

KSU enters the tournament with the A-Sun conference's leading scorer, sophomore forward Markeith Cummings.

KSU's first tournament game tips off Wednesday, March 2, at either 2:30 p.m. or 9 p.m., depending on their official seeding.

Belmont, coached by Rick Byrd, is undoubtedly the focus of this year's tournament. The Bruins, whose only losses in the season were to Tennessee (twice), Vanderbilt, and conference opponent Lipscomb, are considered one of the top mid-major teams in the country.

Their assist numbers rank 17th in the entire nation and leading scorer Ian Clark drops a modest 12.5 points per game. Belmont is hands down the most impressive team in the tournament, with their average margin of victory at 18.1 points per game (ETSU ranks

second at 5.8 ppg).

East Tennessee State, who won the Atlantic Sun championship last year, bring in a dynamic duo of guards in Mike Smith (16.9 ppg) and Micah Williams (14.9 ppg).

The Buccaneers and Bruins are considered the favorites to take the tournament crown. If East Tennessee State wins the tournament, it is possible the A-Sun could have two representatives in the NCAA tournament, with the Bruins potentially qualifying as an at large.

As for the women's bracket, the Lady Owls (9-19, 6-14) have locked up the seventh seed, and take on the Stetson Hatters (17-12, 13-7) in their first round game Wednesday at 6:30 p.m.

The current leader in the A-Sun women's standings, Florida Gulf Coast (24-2, 17-2), will not be eligible to participate in the tournament because of their transition period into Division I athletics. USC-Upstate, currently standing fourth, will also be ineligible for the same reason.

That leaves the Lady Bucs of East Tennessee State (18-11, 15-5) as the clear-cut favorites to take the tournament championship. ETSU brings in a dominating starting five, featuring the dangerous duo of Tara Davis (15.3 ppg) and Destiny Mitchell (14.5 ppg).

The Lady Owls will not only participate in the conference tournament, but will also face off against the North Carolina Tar Heels in Chapel Hill on March 13.

All tournament games, except the men's final, will be shown on A-Sun.tv. The semifinal rounds will air on cable network, CSS as well.

ESPN 2 will air the men's championship game on March 2, at 6 p.m.

SOFTBALL cont.

reached first on a walk to start the inning. Two batters later, McCurry singled to shallow left. In the next at bat, Sikes drove the ball hard to BGSU's second baseman who couldn't field it cleanly and the ball deflected into shallow center field allowing Moore to score from second and give the Owls the lead as McCurry reached third base on the throw. Burkett forced a walk, and the first pitch to Cross went wild and bounced to the backstop scoring McCurry to give KSU an insurance run.

Meixel, who relieved sophomore starting pitcher Catherine Tarvin in the fourth inning, struck out the side to end the game and record the 3-1 victory. Meixel was credited with the win throwing four complete innings with no earned runs on two hits with seven strikeouts. Tarvin pitched three complete innings giving up one earned run on four hits with a walk and no strikeouts.

"Abbey has been sick the first few weeks of the season and this is the first time she's had a chance to pitch like Abbey, and she pitched fantastic today. I'm very proud of her." Whitlock said Saturday.

The Owls rebounded from a 6-3 loss to the Ball State Cardinals in the opening game of the tournament Friday.

Ball State used rallies in the third and fourth innings to pin six runs on the Owls.

In the third, KSU had two outs against the Cardinals but back-to-back singles opened the gates. Both runners scored after a KSU error, a walk and RBI

single. Ball State's Amanda Carpenter hit an RBI double and the Cardinal's Jennifer Gilbert scored on a fielder's choice.

In the bottom of the inning, KSU scored a run of their own after sophomore catcher Morgan Chapman walked and was driven in two batters later with an RBI double by Durant, making it 4-1.

To open the fourth inning Ball State scored on a solo home run and the next batter was hit by the pitch.

Meixel then came in relief for freshman starting pitcher Amanda Henderson. KSU recorded a double play but gave up four singles and the final run for Ball State.

The bottom of the sixth inning saw two runs for KSU as Moore recorded a two RBI double down the left field line, but that was all for the Owls as they dropped the first game of the tournament.

In the tournament, KSU's record came in behind Purdue who went 4-0 and Ball State who finished 4-1. Conference rival Mercer finished 3-2 for the event. The memorial capped a busy week for KSU who flew back from Arizona Feb. 20, and beat No. 22 ranked Georgia Tech at home Wednesday, 4-1.

The Owls play in Bailey Park this week, hosting Jacksonville State 5 p.m. Tuesday. Starting Friday KSU will play five games in three days at the Buzz Classic hosted by Georgia Tech at the Twin Creek Softball complex, the same facility where the Phyllis Rafter Memorial was held.

Things are getting pretty strange around here...

ksuRadio.com
Owl Play. You'll Listen.



Harry Strange Radio Drama
www.harrystrange.com

Every Sunday at 10 p.m.
Re-iring Tuesdays at 5 p.m.

THESE WEIGHTS DON'T GO TO THE BEACH!

(THEY CAN'T SWIM)

SPRING BREAK XP ROOM HOURS*
MONDAY-FRIDAY 6:00 AM - 9:00 PM
SATURDAY 8:00 AM - 5 PM
SUNDAY 1 PM - 5 PM

* BASED ON AVAILABILITY OF STAFF



STUDENT RECREATION CENTER
ROOM 135

Quarterfinals March 2-3	Semifinals March 4	Finals March 5	
			Men's
No. 1 Belmont	CSS/ASun.TV 6:30 p.m.	ESPN 2 6:00 p.m.	A-Sun Champion
No. 8 KSU/CU			
No. 4 Lipscomb			
No. 5 Mercer			
No. 3 Jacksonville	CSS/ASun.TV 9:00 p.m.		
No. 6 UNF			
No. 2 ETSU			
No. 7 KSU/CU			
			Women's
No. 1 ETSU	CSS/ASun.TV Noon	CSS Noon	A-Sun Champion
No. 8 Lipscomb			
No. 4 UNF			
No. 5 Jacksonville			
No. 3 Campbell	CSS/ASun.TV 2:30 p.m.		
No. 6 Belmont			
No. 2 Stetson			
No. 7 KSU			

ATTENTION: Teacher Candidates

The Bagwell College of Education offers a **NEW** opportunity to you!



... a track within our traditional teacher education programs in which teacher candidates learn strategies for teaching all students and specialized training in the use of technology, classroom management, differentiation, assessment, literacy, and engaging families.

In the Urban Education Option the majority of junior and senior level education courses and field work take place in Cobb County public schools and are taught by teams of KSU faculty and Cobb County faculty. Your UE class schedule is guaranteed.

The New Urban Education Option will increase your MARKETABILITY and will make you a highly EFFECTIVE teacher with all students!

Information Sessions:

Wednesday, March 16th, 2011
12:30 - 1:30 p.m., KH 1101
&
Thursday, March 17th, 2011
Noon - 1:00 p.m., KH 3221

APPLY NOW!

Contact: Natalia Rojas
Recruitment Coordinator
Phone: (770) 499-3180
Email: nrojas1@kennesaw.edu
Facebook (Urban Education Option)

Take a peek into the locker room

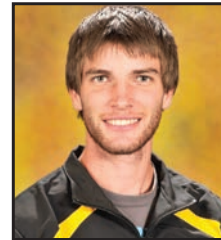
Ashley Thompson
STAFF WRITER

Here's a look at what KSU athletes are into when they're not on the field, court, track or course.



Jaakko Nieminen
Men's Track and Field

What is your favorite food?
While being here in the States, I have fallen in love with southern BBQ ribs and American cheesecake.



Drew Greeson
Men's Track and Field

What has been your favorite class at KSU?
I am an Accounting and Finance major and my favorite class was my BISM 2100 class.



Ryan Spencer
Men's Tennis

What is your favorite movie?
I love the Waterboy. It never gets old.



Ket Preamchuen
Women's Golf

What do you like to do in the off season?
I like to find something to do with my teammates. I still practice in the off season to improve my skills.



Sametria Gideon
Women's Basketball

What is one thing you want people to know about you?
I want to minister to the world through singing gospel.



Suzee Mills
Women's Track and Field

What is your favorite music/artists to listen to?
Lately I've been listening to Dutch music because I am trying to get in touch with my cultural background. My mom's whole family is Dutch.

think spring...think TOMS.



One for One

kennesaw 2615 busbee parkway 770.423.0405

Info Line: 770.491.6775
facebook.com/coolshoesatlanta

abbadabba's
coolshoes.com