

THE SENTINEL

KENNESAW STATE UNIVERSITY

Sewage floods Kennesaw Hall

Michelle Babcock
STAFF WRITER

The fourth and fifth floors of Kennesaw Hall were promptly closed just before noon Feb. 8 after a sewage issue caused flooding on the floors. Plumbing Supervisor Edwidge Dufrensne said the fifth floor women's restroom was the source of the problem, located just outside of President Papp's office. "[It's] just a regular stoppage between the fourth floor and the fifth floor," said Dufrensne. The bathroom and custodial closet of the fifth floor flooded because of the stoppage. Dufrensne said that the sewage water from these floods simply trickled down to affect the fourth floor as well.

Assistant to the Vice President for Student Success Charlotte Doolin, said their office was among those affected. "In fact, the entire fourth and fifth floors of Kennesaw Hall were subject to a mandatory evacuation," said Doolin. The repair and cleanup efforts began immediately following the issue. Doolin said that although the evacuation was inconvenient, she expects the issue will be resolved soon. "Unless we hear otherwise, we will be returning to our offices [tomorrow] morning," said Doolin on the day of the floodings. Since the flooding involved sewer leakage, the emergency flood professionals of North Ridge Restoration, LLC were called in to help with the cleanup.

Your money at work A look at future student fees

Editor's note: This is the second in a two-part series about student fees.

Nathan Tidwell
STAFF WRITER
Carolyn Grindrod
NEWS EDITOR

To keep up with the constant growth of the university, the Student Government Association proposed and passed several fee increases in fall 2010.

The following is a breakdown of the fees SGA and the Student Fee Committee approved. According to SGA President Ali Kamran, all of the fees except for the football fee were submitted to the Board of Regents in December 2010 and have been approved. The BOR will vote on the football fee in April. The parking fee does not have to be approved by the BOR because it is an institutional fee.

Football
\$100 (effective fall 2012 if approved by the BOR)

The addition of a football team, which students voted "yes" to last semester, brings with it a \$100 increase

in students' mandatory fees. Football would cost KSU an estimated \$5 million-\$6 million annually, and according to the Football Exploratory Committee, the \$100 fee will supplement funding a team by 2014. Along with the fee, additional funds from sponsors, donors and ticket sales would be necessary to generate revenue for the program.

Recreation Center Expansion
Increased by \$35 to total \$72.80 (effective fall 2012)

A fee increase of \$35 was requested to expand KSU's recreation facilities. The increase will support a new recreation center estimated at \$57 million. The 175,000 square-foot center would include an indoor track, three basketball courts, three racquetball courts, an 8-lane pool, an outdoor leisure pool and a climbing wall as well as a large multi-activity court.

Wellness Center service expansion
Increased by 80 cents to total \$5 (effective fall 2011)

This fee increase was requested

See FEES Page 2

Students celebrate the Egyptian revolution



Alisen Redmond | The Sentinel

KSU student Shakilla Rahman chants with friends outside the CNN Center Saturday celebrating the Egyptian revolution.

Alisen Redmond
STAFF WRITER

80 demonstrators celebrated outside the CNN Center Saturday afternoon in Atlanta after Friday's news that Egypt dictator Hosni Mubarak resigned from his 30-year presidency after 18 days of protest.

A jubilant crowd dressed in red, white and black, the colors of the Egyptian flag, sang triumphantly and chanted enthusiastically as they held celebratory signs and waved Egyptian flags. They proudly sang Egypt's national anthem and chanted "From the Nile to the sea, Egypt is finally free," and "The people united will never be defeated." Members of the

crowd could be heard exclaiming "Unbelievable!" and "Everyone is smiling! 30 years, you can smile now."

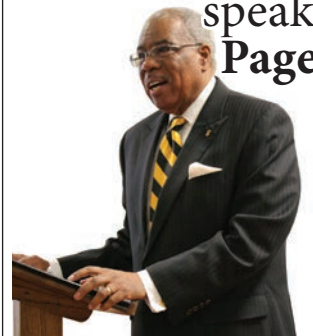
"My friend is Egyptian, so I am here to support her because if it was my country I would expect my friends to support me," said psychology major Shakilla Raman. "I am very pleased with the people as Americans, not Egyptian Americans but Americans, demonstrating in D.C., Atlanta and New York," said Gihan Negm, a Mercer pharmacy student. "[In Egypt,] my mom went to tears when she saw that people here cared."

"I'm here to celebrate," said

See EGYPT Page 2

NEWS

A monumental speaker Page 2



OPINION

Smokers gonna smoke Page 4



A&L

Get a beach ready body Page 5



SPORTS

Double win for Owls Page 9



FEES AT OTHER SCHOOLS

Think you've got it rough?

Check out how KSU, the third largest school in the state, compares to some of the top colleges in state - fee wise that is.

Valdosta State University	\$855
University of Georgia	\$833
Georgia Institute of Technology	\$823
Georgia Southern University	\$822
Georgia State University	\$814
University of West Georgia	\$793
Georgia College and State University	\$784
Dalton State	\$253

For a complete list of colleges and their fees, check out the Georgia School System's Web Site at usg.edu.

Daniel Haire | The Sentinel

Speaker says to follow monumental dreams

Kyle Randall
STAFF WRITER

"If you're going to do something, you've got to plan. It's 90 percent planning," said Dr. John H. Carter to students and faculty Feb. 8 as he encouraged students to "see beyond the brick wall" to follow their dreams, no matter how monumental they may seem.

Carter should know something about turning gigantic dreams into reality – the retired former VP of AT&T came to KSU to speak about his personal efforts in helping to resurrect a monument in Washington, D.C.

in honor of civil rights activist Martin Luther King Jr.

In his lecture "The Man, The Movement, & The Message," Carter, explained how the D.C. monument would not have been possible if there had not been people with a vision.

Carter said that the idea came to his friends George and Pauline Sealey when they were at home one night in 1983.

"They were just having a casual conversation," said Dr. Carter. "That's when they saw beyond the brick wall. They came up with this wild idea of having a

memorial on the Mall in Washington that would actually honor an African American, something that had never been done, or even thought about before."

The National Mall currently houses the Jefferson Memorial, Lincoln Memorial and Washington Monument and, by August of this

year, will also include a monument resurrected in the honor of King.

Upon having his dream, Sealey then lobbied in Congress. President Clinton then signed the legislation approving the building of the monument and it was his college fraternity Alpha Phi Alpha, which is historically known as the first interracial fraternity, decided to help fund the project.

"They saw beyond the wall 13 years after the idea came was developed," said Carter.

That's when Carter got involved. Carter said he had received multiple phone calls, asking him to be the project manager; he initially said no.

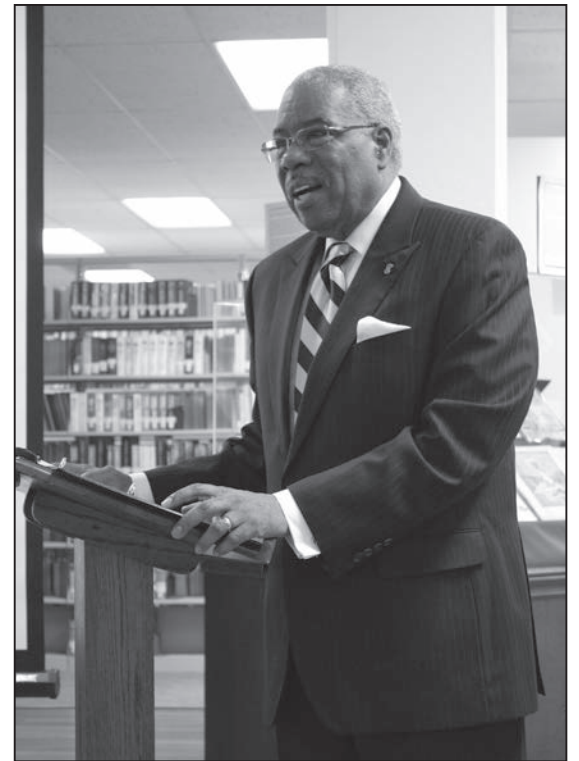
But after Carter's management at AT&T said they would not only support Carter in this project, but they would pay for all of his expenses and sponsor the project, Carter finally agreed.

"Throughout this process, they have supported me in my efforts," he added.

Thus began the process of mapping out how the memorial would be built in the National Mall, and gathering a team of specialists to help with the project.

"Anybody that does anything worth doing, cannot do it by themselves," said Carter.

"They told us it would take 40 years, but with 90 percent planning, we got it done in 18 months."



Kat Shneydorava | The Sentinel

Dr. John H Carter during his speech.

The project team decided to try a design competition in which over 1800 architectural students from all over the world competed and submitted their designs, and in 2000, the official design was chosen.

Carter said that the ground-breaking ceremony was held on Nov. 13, 2006, and on Aug. 28, 2011, the King monument will officially be open to the public.

MLK continued on Page 3



Office of Student Financial Aid
www.kennesaw.edu/financial_aid

Priority Deadline
For submission of the
2011-2012 FAFSA:
April 1, 2011

To learn more about the FAFSA, please check out FAFSA 101 on our website or go straight to www.kennesaw.edu/financial_aid/fafsa/fsa.html

If you have additional questions about the FAFSA or other student-aid related programs, please feel free to contact our office at finaid@kennesaw.edu or (770) 423-6074.

Apple Specialist

Mac is now near campus

PeachMac is now open at The Avenue West Cobb



# of Mac/Apple Products	1,300	4th Year of AppleCare-Free*	Yes
Educational Discounts	Yes	Authorized Service	Yes
6 mths same as cash financing	Yes	Free Tech Support	Yes
PeachPlus Training & Support	Yes	Free Service Loaners**	Yes
Trade-in & Upgrade program	Yes	25+ years of Mac expertise	Yes

cool products. great service. amazing values.

peachmac

ipads • macs • ipods • software • service

The Avenue West Cobb (near Barnes & Noble)
678-384-8550 • peachmac.com

Marietta • Macon • Athens • Augusta • Peachtree City (coming soon)

*covers labor only in year 4. **Free loaner available to PeachMac customers who purchase a Mac with AppleCare.

Keep your body, change your mind

Christy Rogers
STAFF WRITER

The KSU Wellness Center plans to bring students an opportunity to defy unhealthy body perceptions next week, as they host “Keep Your Body, Your Mind Week.”

The weeklong event sponsored by several on-campus organizations, including the Center for Health Promotion and Wellness, the Health Clinic, Residence Life, and others, will take place Feb. 21 – Feb. 24.

“We wanted to hold these various events throughout the week to promote not only having a positive body image, but we’re hoping to spread the message that there is no perfect body,” said peer health education coordinator Sabrina Petusevsky.

The Center for Health Promotion and Wellness wants students to have fun while learning that they don’t need to conform to the “strict definition of beauty” our country imposes on us, said Petusevsky.

“Everyone is beautiful and unique, and we should celebrate that,” added Petusevsky.

Here’s a rundown of the week’s events:

Monday, Feb 21: Screening of the documentary “America the Beautiful” in the University Village Suites study lounge at 7 p.m. Includes free pizza and popcorn, along with a panel and discussion after the movie.

Tuesday, Feb 22: “No Photoshop Required” photo booth. Upstairs area of The Commons, 11 a.m.-3 p.m.

Thursday, Feb 24: “The Changing Face of Men’s Body Image”, a Learn-Over-Lunch discussion in the Student Recreation & Wellness Center, Room 130 at 12:30 p.m. The first 30 students to register online will receive free lunch.

Learn more about “Keep Your Body, Change Your Mind Week” and any Wellness Center events, call 770-423-6394 for more information.

FEES continued from Page 1

to aid in the expansion of the Wellness Center’s services. SGA President Ali Kamran said this fee increase will bring a full-time dietician to the center and support other activities.

Supply and Demand Parking Increased by \$20 to total \$70 (elective, effective fall 2012)

Parking Operations requested an increase of \$20 to its current elective permit fee, bringing the fee up to \$70 per semester. Revenue generated by the increase will support a campus-wide shuttle system. The shuttle will be used to provide on-campus transportation as well as transportation to and from the Sports & Recreation Center, Chastain Point and an offsite parking location. Students who do not bring a car to campus may opt out of the elective parking permit fee.

Tuition may increase, HOPE may change

Students will no longer pay the mandatory Institutional Fee of \$165 beginning in fall 2012, when several of the new fees will begin. The removal of this fee “will actually decrease student fees by \$13.20,” said Kamran.

Overall, however, students will be paying more for school in the com-

ing semesters.

Kamran said during the last meeting of the Student Advisory Council, the group that goes in front of the BOR, the group agreed there might be a possible 6 to 13 percent increase in tuition and a guaranteed restructuring of the HOPE Scholarship program.

According to Kamran, the Board of Regents has said it is not giving more funding at all to schools; rather, it will continue to cut funding.

“It leaves me asking internally: Am I going to be paying more and more for less and less?” added Kamran.

As of 2008, the state mandated the “Fixed for Four” plan for students entering college in 2009. Under the plan, students get a fixed rate for their tuition for the first four years they are in college.

However, according to the BOR website, The Fixed-for-Four Guaranteed tuition plan does not apply to incoming freshmen for fiscal year 2011.

While current students may not be affected by upcoming increases in the cost of attendance, students entering KSU in the coming semesters will feel the pinch.

Correction

The Sentinel strives to meet the highest editorial standards for accuracy and completeness in its reporting. It is our policy to correct errors when they occur.

The article “Super Bowl Sunday: An American Tradition” in last week’s issue

contained an incorrect statistic. The Green Bay Packers have won four Super Bowls as to date.

The photo of the greeting cards that accompanied “Valentine’s Day about love or money?” on page five was taken by Jessica Sides.

POLICE BEAT

—Compiled by Michelle Babcock

Shuttle Mishap

Police were dispatched to the Town Pointe parking lot on Wednesday January 2, at 9:02 p.m. in response to an accident involving a shuttle. The male driver was parking his bus for lunch when he struck a light pole. The driver said he was looking to his left to avoid cars when he hit the pole, damaging the front bumper and passenger side mirror of the shuttle and left the pole leaning. The driver contacted his supervisor and police warned him for improper parking. KSU police released the driver and completed a GA Uniform Motor

Vehicle Accident Report.

Student Rights

On Wednesday February 2 around 11:15 a.m., a student was using his headphones to listen to music on the third floor of the Social Science building, when another student complained about the noise. The male listening to music ignored the student complaining, and the student then complained to a faculty member of the Dean’s Office. When confronted by the faculty member, the male said he told the faculty member that he was within his rights to listen to headphones. The male stated that the faculty member told him that he had no rights as a college student. Police were dispatched to the Social Science building to speak with the faculty member, who stated that the student had been rude to her, and that it wasn’t the first complaint she

had heard about the student. Police advised the male to contact the Office of the Social Science building to find out how to file a complaint against a faculty member.

Commons Crime

KSU police responded to a call to back up Cobb police who were with two males in parking Lot B on Thursday, February 3 at approximately 1:30 p.m. Police stated that they smelled a strong scent of marijuana inside the car. The driver agreed to let police search his car, and a K-9 unit was deployed. Although police stated the vehicle had a strong odor of freshly burnt marijuana, no illegal narcotics were located. The driver said he smoked marijuana in his car earlier that morning, and both males were released. Both males involved are employees of The Commons.

MLK continued from Page 2

The memorial will be located on a line path between the Jefferson and Lincoln memorials. The memorial includes a stone bust of Martin Luther King Jr. that faces the Jefferson Memorial.

“The symbolism is that [the memorial] is directly in between the Lincoln and the Jefferson. Jefferson wrote it, Lincoln fought for it, King died for it,” said Carter.

Some students found Carter’s story of the monument deeply inspiring.

“It’s really inspirational to see someone do work and build something that will last for generations and mean so much,” said international affairs major Helen Pelibecki.

For more information on the Martin Luther King Jr. Washington Memorial visit www.mlkmemorial.org.



Kat Shneydorava | The Sentinel

From left to right: Dr. John H. Carter, Rita Spisak, paraprofessional II, Alan Lebish, associate director of sturgis library, and Director of Sturgis Library Betty Childres.

EGYPT continued from Page 1

visiting Egyptian Emory medical student Ahmed Messallam. “We’re free and our dignity is back. I am now more confident of my future and my children’s future and I am looking forward to going back to Egypt and seeing the change that has happened.”

The protests in Egypt that led to Mubarak’s resignation began as a Facebook event and the protest spread until everyone was in the streets, said Negm.

“This teaches the world that the people rule the country, not the government,” Messallam said.

“People were frustrated,” Raman said. “[Mubarak] was taking their money and cutting off communication from the outside world.”

Obama’s prior support of the Mubarak regime was attributed to economic benefit and the need for allies in the Middle East. “Obama was thinking of America’s benefit instead of the people’s benefit,” Raman said. “I think it was the actions of the people and Mubarak shutting off communication with the outside world that changed his mind.”

Students stressed the importance of self-determination in Egypt’s future.

“I’m very distrusting of U.S. foreign policy because we have violated international policy so many times,” said Riana Hernandez, Georgia State University studio art student. “The U.S. should play a support role instead of trying to put its own politics in place.” “We’re not Afghanistan; we’re not Iraq, and we don’t need their help spreading democracy,” Negm said. “We can do it on our own.”

“The Muslim Brotherhood is too radical and no one will vote for them”

Now the people wait for elections, Negm said.

The people trust that the military will be able to ensure free and fair elections because the military defended Egyptian protesters from police attacks, Negm said.

Worries that the Muslim Brotherhood will take power in Egypt are unsubstantiated, Negm said. “Muslims and Christians do not want any Islamic government. The Muslim Brotherhood is too radical and no one will vote for them.”

Christians and Muslims are united in the revolution, students said. “There have been some troubles lately, but in moments like this they are united and I believe they will continue to be,” said Messallam. “We are one hand.” “There has always been a good relationship between Christians and Muslims,” Negm said. “We are Egyptians, whether we are Muslims, Christians, atheists or whatever.” Solidarity between Egyptian Muslims and Christians can be a learning lesson for Americans, Raman said. “There is a brotherhood between Christians and Muslims,” Raman said. “This is opening up a new view of the relationship between Christians and Muslims.”

Egypt’s revolution has implications for the rest of the world, students said. “If there is any change in Egypt it will change the Middle East and then the world,” Messallam said.

SGA 'persecution' more drama than reality

There has been much ado about the Student Government Association's committee to focus on campus smoking policy. A column by Alessandra Largent last week argued that KSU smokers were "treated like second-class students." Smokers, she believes, are "being corralled like so many leprosy ridden cattle into smoking areas" and are now about to be "persecuted by SGA."

I strongly doubt that SGA is really in the business of persecution considering that SGA does not really have as much power over campus policy as many would think. Most of the time, when the KSU administration is looking to change campus policy or increase fees, they go to SGA to find out what students think. Whether or not SGA acts as the lapdogs for the administration is another story and one that I am not informed enough to comment on during the current SGA administration.

That being said, I do not see how one could call the banning of smoking areas on campus a form of persecution. Without getting into the argument about the fact that this is a quasi-public institution, it is still a place with which every single student made a voluntary contract. No one was forced to come here. When you enter into a contract with an institution, you agree to adhere to all policies, costs and procedures that may exist or arise. Therefore, no one is losing a "right to smoke."

Legally, I have the right to consume alcohol, but this is also banned on campus. I may not agree with this policy, but you do not see me protesting in front of Kennesaw Hall, demanding that my rights be restored. I realize that I must respect these rules in order to attend the institution and that no injustice has occurred. My rights have not been violated in the process.

Despite the suggestions of tyranny, I highly doubt that a full smoking ban will be passed. According to the Sentinel article, SGA President Ali Kamran noted that smoking bans "usually encounter little success." I worked with President Kamran when he and I were senators on SGA, and he is a very levelheaded individual.

Letter to the Editor Cigarette concerns not 'hype'

Dear Editor,

I find it very interesting that, in an age of unparalleled knowledge and advances in medical science, that a college-educated person could believe legitimate concerns regarding cigarette smoking are just "hype."

Countless studies have undeniably determined the adverse effects of both personal smoking and secondhand smoke. Thus, it is my belief that individuals who choose to continue this risky habit should respectfully confine their smoking to the designated spaces where the pollutants of the smoke will have minimal effect on those of us who don't care to purposefully inhale carcinogens. Had I visited our campus

Justin
Hayes



"...[W]e can disagree with campus policy, but to call certain measures "persecution" is a bit drastic. There are no injustices occurring, just bad policy."

Personally, I would be opposed to a smoking ban. I think there should probably be more designated smoking areas on campus, but I do not think there's really any way to stop those who do not use them. As a person with respiratory health problems, I find it quite annoying when someone walks by and puffs smoke in my face. All we can ask, as Caitlyn Van Orden suggested in a column last semester, is that smokers have a little respect for others.

Again, we can disagree with campus policy, but to call certain measures "persecution" is a bit dramatic. There are no injustices occurring, just bad policy. It must also be noted that despite what SGA's findings are on the subject, they do not get the last say on campus policy. More than likely a resolution will be drafted that will be sent to the KSU administration. I strongly suggest that those who feel passionate about the issue try to attend these debates and share your thoughts - just be rational about it.

prior to enrolling, the constant, ever-present reek of tobacco in the air from these pre-existing smoking "corrals" alone might have turned me away.

KSU claims to be a college at which health and fitness is essential for good living. For the sake of asthma sufferers, those with other respiratory ailments, and mostly students like me who simply don't understand the rationalization behind smoking, I write to support the continuation of existing policies regarding the matter - and a full ban if the SGA sees fit.

Philip Brock
Freshman/Undeclared major
Marietta, GA

THE SENTINEL SPRING 2011

THE SENTINEL IS A DESIGNATED PUBLIC FORUM. STUDENT EDITORS HAVE THE AUTHORITY TO MAKE ALL CONTENT DECISIONS WITHOUT CENSORSHIP OR ADVANCE APPROVAL. INFORMATION PRESENTED IN THIS NEWSPAPER AND ITS WEB SITE IS IN NO WAY CONTROLLED BY THE KSU ADMINISTRATION, FACULTY OR STAFF.

EDITORIAL BOARD

EDITOR IN CHIEF CAITLYN VAN ORDEN
eic@ksusentinel.com

NEWS EDITOR CAROLYN GRINDROD
newseditor@ksusentinel.com

OPINION EDITOR TONY SARRECCHIA
opinioneditor@ksusentinel.com

ARTS & LIVING EDITOR NIKKI HOPE
artseditor@ksusentinel.com

SPORTS EDITOR JACK MORBITZER
sportseditor@ksusentinel.com

PHOTO EDITOR PATRICIA CHOURIO
photoeditor@ksusentinel.com

CHIEF COPY EDITOR MALLORY BREWER

STAFF

PRODUCTION MANAGER DEBBI LITT

PRODUCTION ADEOLU ADEBAYO, DANIEL HAIRE, VANESSA JENKINS, BRITTANY WIRSIG

WEB EDITOR RYAN SCHILL

ADVERTISING MANAGER ELIZABETH DIXON
admanager@ksusentinel.com

STUDENT MEDIA MARKETING COORDINATOR AMIE FOX
marketing@ksumedia.com

STUDENT MEDIA ADVISER ED BONZA
adviser@ksumedia.com

Letter Policy

- 1.) The Sentinel will try to print all letters received. Letters should be, at maximum, 250 to 300 words long. Exceptions are made at the discretion of the editors. We reserve the right to edit all letters submitted for brevity, content and clarity.
- 2.) The writer must include full name, year and major if a student, professional title if a KSU employee, and city if a Georgia resident.
- 3.) For verification purposes, students must also supply the last four digits of their student ID number and a phone number. This information will not be published. E-mail addresses are included with letters published in the web edition.
- 4.) Contributors are limited to one letter every 30 days. Letters thanking individuals or organizations for personal services rendered cannot be accepted. We do not publish individual consumer complaints about specific businesses.
- 5.) If it is determined that a letter writer's political or professional capacity or position has a bearing on the topic addressed, then that capacity or position will be identified at the editor's discretion.
- 6.) While we do not publish letters from groups endorsing political candidates, The Sentinel will carry letters discussing candidates and campaign issues.
- 7.) All letters become property of The Sentinel.
- 8.) All comments and opinions in signed columns are those of the author and not necessarily of The Sentinel staff, its advisers or KSU and do not reflect the views of the faculty, staff, student body, the Student Media or the Board of Regents of the University System of Georgia. Columns are opinions of only the columnist. They do not reflect the views of The Sentinel, but instead offer a differing viewpoint. The Sentinel is the student newspaper of Kennesaw State University, and is partially funded through student activity funds. The Sentinel is published weekly (Tuesdays) during the school year. First three copies are free; additional copies are \$1.00. No part of The Sentinel may be reproduced without the express written permission of the editor in chief.

Contact Us.

Mail
The Sentinel
Bldg. 5, Rm. 277, MD#0501
1000 Chastain Road
Kennesaw, GA. 30144-5591
Student Center 277

Phone
Editorial 770-423-6278
Advertising 770-423-6470

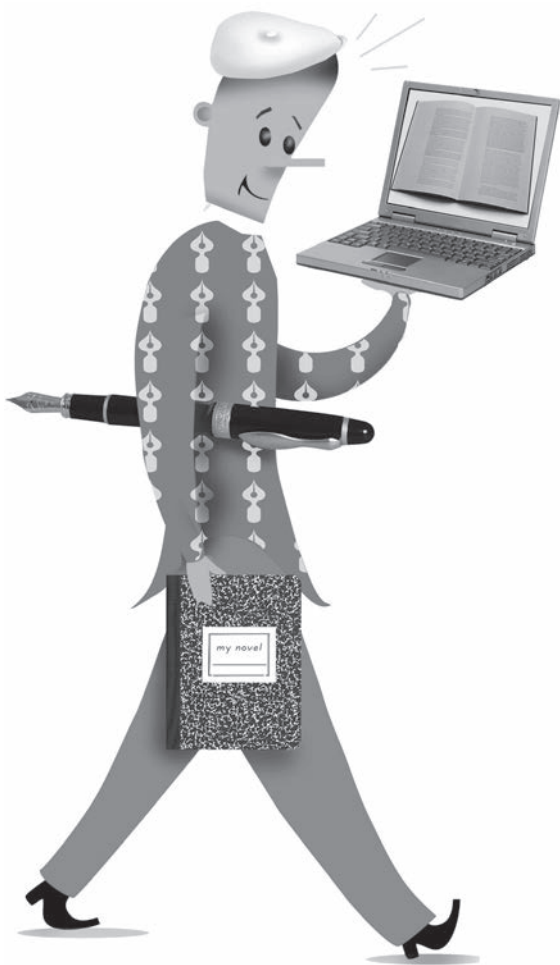
Email
sentinel@ksumedia.com

Online
Editorial
www.ksusentinel.com

Advertising
ksuads.com

Follow us
twitter.com/ksusentinel

The right way to write



Heath Martin
STAFF WRITER

Students, did you know that there is a resource on campus that, with at least twenty short minutes of your time, can potentially turn your C into an A? The Writing Center in the English Building is here specifically to help you succeed in all your writing endeavors that you venture on at Kennesaw State. Student Assistants can help you no matter what class you are writing for. They are able and willing to help you in any way you, whether you need an 'expert' opinion to read and help polish your nearly finished paper, or you have absolutely no idea where to begin on your assignment.

Our Writing Center has an amazing staff of students and graduates that are fully versed in the art of writing and rhetoric. They offer service to help you own the Regents' Test, if that's where you need assistance. They also help ELL and International students understand

how to successfully write in the English language.

I recently conducted a survey of current KSU students and discovered that 97% are indeed aware that the Writing Center is in existence and available for their use. 91% of students agree that the Writing Center would be advantageous to use on writing assignments, but only 36% of students have even used the Writing Center. Surprisingly, only a mere 6% of students use the Writing Center regularly.

Michael Ruther, a Student Assistant at the Writing Center, said, "Writers from any and all disciplines and writing levels get a tremendous amount of help from having someone else read over what they have written." Patricia Cardona, an English Professor at Kennesaw State, said herself: "I have seen consistently 'C' quality papers turn into 'A' papers after the assistance of the Writing Center." So the real question to me is "Why not?"

Research has been done and the facts are clear. Visiting the Writing Center

will not only help you with the assignment you are currently working on, but it will also help improve your writing skills altogether.

Beth Young, an associate professor in the Department of English at University of Central Florida said, "Those who benefit most from Writing Centers are those of us who have a higher tendency to procrastinate."

So, why not break your normal writing cycle and try it out? You never know you might get a much better grade from the Writing Center's assistance. I forgot to mention: this resource is not free, you pay for it every semester whether you use it or not. So, you have nothing to lose by using it, only a potentially higher GPA to gain. Next time, on a writing assignment try to take advantage of the writing center and visit to room 242 in the English Building, and get some input, and you be the judge of whether the Writing Center is all it's cracked up to be.



Build up your beach bod

Dan y White
STAFF WRITER

It's that time again; the time of year where spring break creeps around the corner and shorts and bathing suits come out from hiding, where the gyms are packed with irregular visits from students and diets take on a life of their own in hopes of getting the perfect beach body.

With Mar. 5th rapidly approaching, a great way to get those banging beach bodies is

to hit the gym. Doing things like cardio and toning at least three times a week will shave off some of your body weight and enhance the muscles you already have.

"I work out about 6 times a week," said biology major Thanos Cara. "Working out and staying healthy is a part of my lifestyle."

The Wellness Center offers a number of aerobics classes that are a fun and an easy way to get in shape while jamming to the latest hits. These classes include

Zumba, Kickboxing, Turbo Kick and Core Spin.

"I teach Core Spin on Mondays and Wednesdays," said fitness instructor Misty Trautwein. "Core Spin consists of one half cycling and one half core conditioning."

In addition to working out, eating healthy is equally as important. Knowing your limits and not indulging in some of the fattier foods not only helps you maintain your body, but also gives you more energy.

"Diet is 80% of it," said

Trautwein. "Doesn't matter how much you're working out if you're eating nothing but junk."

Some healthy alternatives to eating snacks like chips and cookies are granola bars and fruit. You're still satisfying that sweet tooth and adding more fiber to your diet. Things with protein like chicken, are a great way to stay lean.

"Salads are my favorite," said art major Joyce Goodman. "I love the taste with no salad dressing."

Now that we have the

workouts and diets down pack, pairing up with a partner will take your workout process to the next level. While working out can be a little dull, having a friend there to boost you and keep you on track is important.

Getting to a place where you are comfortable with your body is a process. Be prepared to work hard and when spring break comes, show off that banging body.

"Focus on staying healthy and find new ways to challenge your body," said Trautwein.



Dan y White | The Sentinel

Try different workouts to create a fun and varied exercise routine.

COLLEGE IS A DRAG

**Thursday
February 24th
8:00 PM – 10:00 PM
Student Center
University Rooms
BE THERE**



The Kennesaw Pride Alliance's 4th Annual Charity Drag Show to benefit P.A.L.S. Atlanta (Pets Are Loving Support)

THE ALPHA BETA TAU CHAPTER OF PHI BETA SIGMA FRATERNITY INC. PRESENTS:

CONVERSATION AMONG BROTHERS II

FREE TESTING



KNOW YOUR STATUS

**Tuesday March 1, 2011
1:00 PM - 3:00 PM
University Rooms CDE**

Conversation Among Brothers is an initiative targeting African American college men designed to encourage ongoing peer-to-peer discussions about topics and issues that adversely impact African American men, particularly HIV/AIDS.

KSU Swing Dance Association
Want to learn how to swing dance?

Monthly Dances in KSU Student Center:



February 19
March 26
April 23



FREE Lesson: 7:30pm
Social Dance \$5: 8:30pm

Find us on facebook (KSU Swing)
<http://ksuswingdance.wordpress.com>

ESL Study Center Story

Kimberly Ducasse
STAFF WRITER

All students can come to the ESL Study and Tutorial Center for any education-related need, particularly for tutoring in English and for the Regents' Exam. Due in part to the number of international students at KSU, the university strives to represent a global initiative. Services offered at the center include general advisement, registration help, and classroom needs such as reading and presentations. The center is not just intended for undergraduate students as those working on master's and Ph.D. programs also visit.

Open Monday through Thursday, 9 a.m. to 5 p.m., the center tends to be busiest around midday, when students file in for tutoring sessions and for in-between class studying. Professors also use the center as a conduit for their international students when it comes to providing additional time and other resources to take tests.

Nadia Abdulahi, a second-year graduate student, tutors for the

center, earning internship credit toward her Professional Writing degree.

"I enjoy being able to help my fellow KSU students in preparation for the Regents' Exam," said Abdulahi.

In the future, Abdulahi intends to teach English as a second language in a higher learning institution.

The center's most frequent visitors are students seeking the room's quiet comfort and accessibility to computers with free printing and bookshelves filled with relevant readings. The bulletin board provides information such as the location for registering for the Test of English as a Foreign Language (TOEFL) and motivational clippings.

Sophomore Gabrielle Vera comes to the center twice a week, for 45-minute sessions, to study for the required Regents' Exam. She said she enjoys having the quiet space to do work.

Anne Ntouanye, a native Cameroonian and French speaker, feels as though the center is like her own office, which keeps her coming back to work on assignments in a tranquil corner. She began using the center in 2008, but now comes to study for the Regents' Exam and to receive English tutoring.

David Schmidt, the program administrator, works diligently toward helping students like Ntouanye with their education and assimilation to KSU. In fact, many instructors advise their students to seek his support.

Schmidt, also an academic adviser and an English tutor, has become synonymous with the

center, with students and he on a first-name basis, as if they were family. He claims to have found his niche working among international students because of his professed love for the English language and with his own grandparents being immigrants and struggling with English.

"I enjoy focusing on the international student population," said Schmidt. He deems them as "motivated students" that he loves working with.

Nursing major Ifeoma Okenchi, is satisfied with the help she's found at the center after following her professor's recommendation to visit Schmidt.

"This system is different from our system back home," Okenchi said about Eastern Nigeria where her English comprehension was limited to multiple-choice questions.

Okenchi ultimately met her goal with Schmidt's and the center's help: to speed up her test-taking and improve her comprehension.

Schmidt is also influential in the Conversation Partners Program, in which international student is partnered with a native English-speaking student.

"It's a great way to build a camaraderie and make international students feel welcome in a native country," said Abdulahi, a previous program participant. International students with a minimum 3.25 GPA who meet the program's requirement of volunteer work can receive a tuition waiver credit that can lower the out-of-state tuition fees to those of in-state tuition. However, Schmidt says full participation is required from the student to receive the waiver credit.

10% OFF
with KSU ID!
(excludes stamps & pre-paid cards)

GOIN' POSTAL
WE BUY TEXTBOOKS
FOR CASH!
WE BUY MORE! ALL YEAR LONG!

CLOSEST POSTAL SERVICES TO KSU
FEDEX DHL UPS

PROFESSIONAL DOCUMENT SERVICES 1133 Chastain Road - STE 200
Kennesaw, GA 30144
(near Mellow Mushroom)
678-290-5420
FREE DELIVERY AVAILABLE TO KSU! GOINPOSTALKSU.COM

Safe & Secure Mailbox Rental
Proud Sponsor of KSU Tennis and Soccer



Michelle Babcock | The Sentinel

Nigerian exchange student Ifeoma Okenchi (left), a native Ibo speaker, works on her written English. Anne Ntouanye, originally from Cameroon and a native French speaker, shown studying in the ELC.

rehab|pc

We are on Chastain Rd.
Between Taco Mac and 5 Guys

* "like" us on facebook for a 10% Discount
www.facebook.com/rehabpc

* Bring in your KSU id for another 10% Discount

www.rehabpc.com Store Hours
678-310-5690 Mon - Sat
info@rehabpc.com 10am - 7pm

Do you need to recover data off of and old machine?
Is your computer slow?
Is your computer protected from viruses?
Are you tired of annoying pop-ups?
Is there something wrong and you just can't put your finger on it?

Come on in!

STUDENT POLL

“Is there anything the University could do to improve parking?”

—Compiled by Alexandra Beneteau



Maeghan Trader
Senior
English Major

“Seniors should be given priority parking passes, and everyone else can shark over it.”



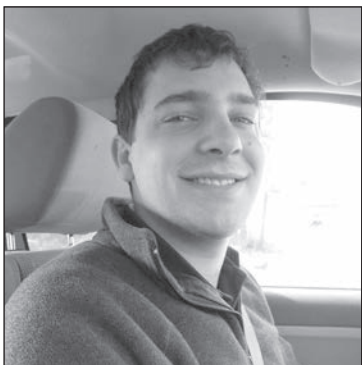
Albro Vrooman
Junior
Biology Major

“Time limits in certain decks to ensure that there will always be a spot.”



Kayla Medina
Sophomore
General Studies

“Build another parking deck!”



Chase Harhvey
Senior
English Major

“There may not be a solution, but the good thing is many students are increasing their heart rate, struttin’ that ass”



Jeffery Oparnica
Junior
Geography Major

“Let students use the empty teacher parking spots.”



Meredith Cagel
Junior
Communication Major

“Charge for parking in certain decks, particularly the West deck, because it offers more convenient parking spots.”

SENTINEL CLASSIFIEDS

RATES: \$9 for the first 250 characters (about 40 words), 2¢ per additional character. Pre-payment is required.
DEADLINE: Sunday midnight E.S.T. before the requested Tuesday publication.
TO PLACE YOUR AD: Go to ksusentinel.com/classifieds. Problems? Call 770-423-6470.

FOR RENT/ROOMMATES

3005 Pine hill Drive NW, Kennesaw, Georgia 30144. For Rent by Owner - Residential 4 Bedroom, Recently reconditioned, 2 Bath, home with Dining and Living areas, Split Level, Brick with finished basement including Den and Fireplace, attached Garage with plenty of storage, includes Wash Room and Rear Deck. Full appliances connections including Washer & Dryer, Hardwood and Tile floors, located on quiet street on a large shaded lot, in Cobb County Schools District with Kennesaw College near by. \$1,100.00 per month plus deposits. For Appointments Contact: 404-933-2836 or 281-360-8262.

\$480 Room for rent-minutes from KSU. THIS HOUSE IS AVAILABLE TO RENT BY THE ROOM. The house has a total of 4 bedrooms, 2.5 bathrooms. Three bedrooms are available currently. PERFECT FOR SHARING! -Access to common areas -CABLE & INTERNET INCLUDED -Deposit is required -Microwave--Stove/Oven, Laundry Area -Swimming Pool, Tennis -Just Renovated -Gorgeous screen porch. GREAT LOCATION! Safe and Quiet Neighborhood. Minutes from shopping centers-Town Center Mall, I-75, and Kennesaw State University. Contact 404 429 9515 or e-mail papazova101@yahoo.com.

FOR SALE

Office Furniture Liquidation Sale. Mar 4th: 10am - 5pm. Mar 5th: 10am - 4pm. Chairs: \$5 and up. Desks: \$79 and up. File Cabinets: \$50 and up. And more! The sale will be at 3380 Town Point Dr. NW, Building 1, Suite 160, Kennesaw, GA 30144 and 4290 McEver Industrial Drice, Acworth, GA 30101. If you have any questions or need help with directions, please call 770-514-0822. www.gcsgroupus.com.

CHILDCARE

Are you enthusiastic, dependable, flexible, and like to help others? Position provides life and social skills support to special needs teen. Candidate must be 19 or older and

be willing to obtain First Aid and CPR certifications. Great opportunity as all other training is provided. Flexible hours available Monday thru Friday 4 pm to 8:30 pm. and Saturday and Sunday hours from 10 am to 6 pm. Hours can be job shared with another candidate. \$13.50/hour. If interested call 770-423-7039.

Grad student looking for an experienced babysitter for a 10 yr old and 7 yr old. Days and hours negotiable. Background check a must. Pay is great. Please email with questions or to set up interview. Only serious inquiries.. shanashelise@gmail.com.

JOBS: PT AND/OR FT

Nautix Pools is now hiring lifeguards in Cobb, Cherokee and Paulding counties for the 2011 summer season. Full time and part time positions available. Flexible hours and competitive pay! Apply online at www.nautixpools.com or contact lauren@nautixpools.com. 770-485-3672.

MISC. SERVICES

COLLEGE TUTORING Math, Chemistry, Physics, Computer Science. Georgia Tech Alum w/ masters degree. Meet on campus or local coffee shop. Travel fees may apply depending on location. \$15/ hr for private tutoring. Discounts for groups and extended contracts. Andrew tutor@synapticknowledgebase.com 803-747-5782.

Get your Taxes done with NO MONEY UP FRONT! *****\$75 For Basic Student Return with ID***** Do you need a professional with experience and knowledge of all the tax laws who can assist you to get all the money available to you? Let me help you get the largest refund available to you. You can come to my location or I can come to you. You can also fax your information and your refund will be calculated within 24 hours. Refunds available in as little as 8 days. Rapid Refunds available for those who qualify. Constance Kusema (KSU Alumni), Superior Tax Services, 678-634-6213.

BUYER BEWARE! There is no substitute for closely examining any offer. If it sounds too good to be true, chances are it's a scam. Please check all offers BEFORE sending money or personal information. Consider it a warning sign if you must buy something in order to start the program. For a reliability report on a specific company or offer, check first with your local Better Business Bureau. www.bbb.org.

the KEY to
ACADEMICS

the KEY to
SCHOLARSHIPS

the KEY to your
CAREER

UNLOCK YOUR POTENTIAL
www.JOINGOLDENKEY.org

You've Got News
www.ksusentinel.com

Picture Your New Job

The MA in American Studies

App. Deadline 4/1

amst.hss.kennesaw.edu

Gender and Women's Studies Focus Week at Kennesaw State University
February 14-17

Monday 14

- 2:00-4:00 GWSSA Symposium on Love* SC 215
- 4:00-5:00 GWST Gallery Exhibit & Dean's Reception SO Gallery
- 7:00-9:00 GWST and Francophone Dinner and Movie UC 200

Tuesday 15

- 2:00-3:30 Lisa Haney-Johnson Book Talk* University Rooms AB
Author of *Girl in Need of a Tourniquet*

Wednesday 16

- 6:30-9:00 Film Event w/CRS Programs* SO1021
Mountains That Take Wing: Angela Davis and Yuri Kochiyama—A Conversation on Life, Struggles, and Liberation

Thursday 17

- 3:00-4:00 Reception for Dr. Nina Asher SO Atrium
Sponsored by the Bagwell College of Education
- 5:00-6:30 Dr. Nina Asher on Postcolonial Feminism SO1021

***Free Food!**

8

FEB. 15, 2011

DIVERSIONS

Word Search



Find the following Anti-Valentine's Day words!

ANTI VALENTINE

DEPRESSION

DUMPED

FOREVER ALONE

HEARTACHE

SINGLE



Oowl Snap!



The staff of The Sentinel wants to see your best shots. If you have a KSU photo, whether it's you and your friends painted up at the hockey game or an artistic shot of the Wilson Building, we want to see it. Post it on the wall of our Facebook fan page ("KSU Sentinel") and let us know who took it and what's going on in the shot. Each week, we'll select the best photo and print it in "Diversions."

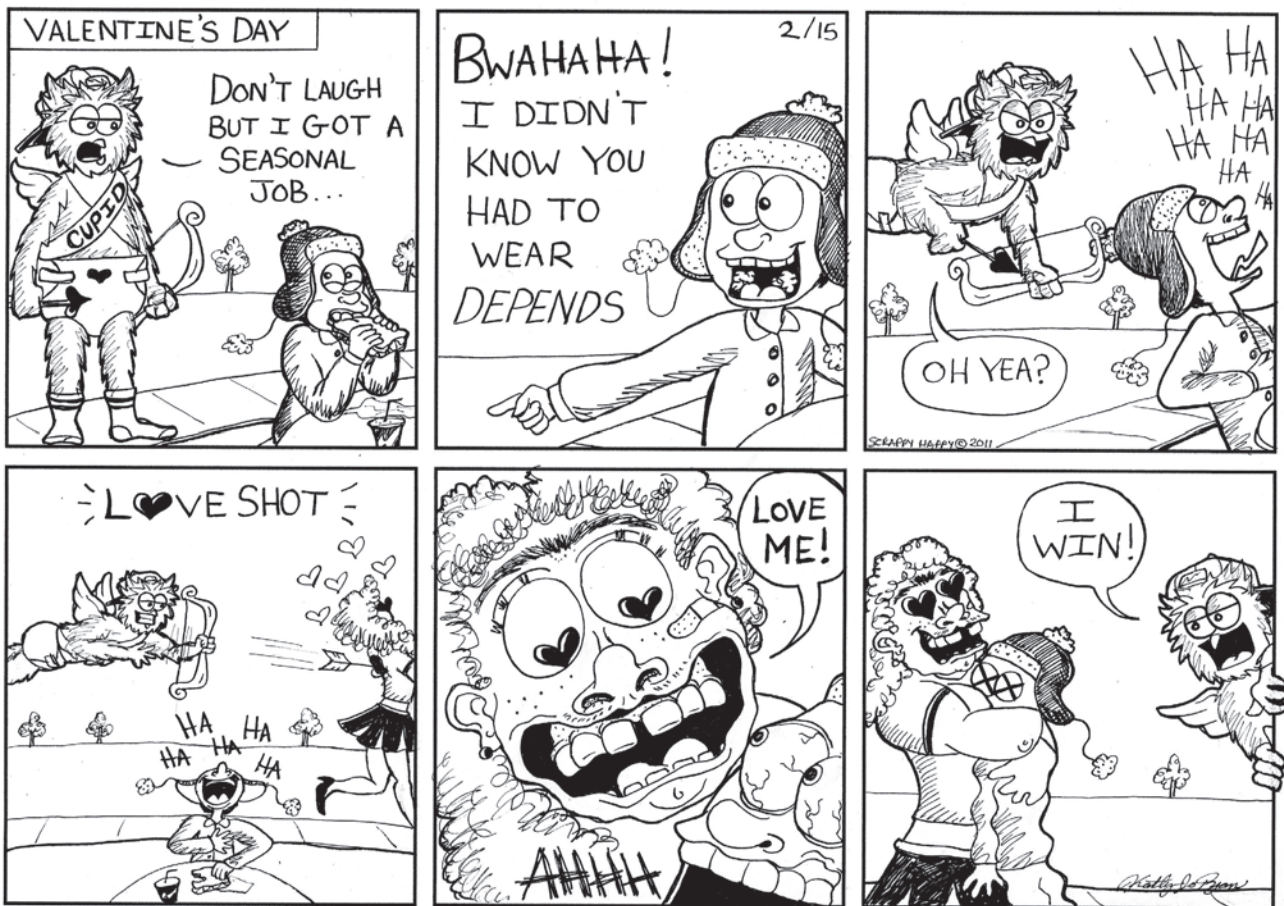


Photo submitted by Tom McConnell, KSU Athletics

Senior guard Kelvin McConnell, right, and sophomore guard Markeith Cummings, left, became the 12th and 13th players to join the 1,000 point club in KSU's history on the same night, in back-to-back possessions. Two free throws by Cummings followed by a 3-pointer from McConnell put both Owls in the record books against FGCU Thursday.

SCRAPPY HAPPY

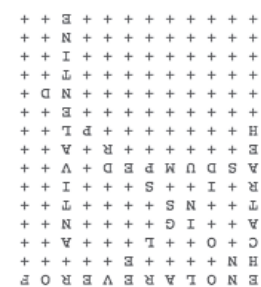
BY KATHY JO RYAN



Su·do·ku

2		5			
			6		
4					
		3	1	4	
		6	5	1	

3	5	6	2	1	4
2	4	1	5	6	3
6	2	3	1	4	5
4	1	5	3	2	6
1	3	4	6	5	2
5	6	2	4	3	1



Things are getting pretty strange around here...

ksuradio.com
Owl Play. You'll Listen.



Harry Strange Radio Drama
www.harrystrange.com

Every Sunday at 10 p.m.
Re-airing Tuesdays at 5 p.m.



Better late than never

Owls defeat FGCU and Stetson at buzzer

Neha Ali and John Lawrence
STAFF WRITERS

The KSU Men's basketball team clinched a dramatic 67-65 win against the Stetson University Hatters Saturday night at the KSU Convocation Center. The win was the second straight that the Owls won on their last possession and third of the week.

Sophomore forward LaDaris Green saved the game from going into overtime when he tipped in a missed jumper by junior guard Spencer Dixon at the buzzer and gave the Owls another victory.

"I didn't care who made the final basket, I just wanted it to go in," said Green.

After a quick jumper by Dixon, the game was tied at 65 with 2:12 left on the clock. Stetson had a defensive rebound leaving them with possession the last 42 seconds of the game. Trying to get the win, the ball was turned over by the Hatters. Junior forward Artie Marine came back with a steal, passing it to senior Kelvin McConnell who eventually handed the ball back to Dixon.

Dixon calmly waited as the last 30 seconds on the shot clock ticked down. With less than three seconds left, Dixon moved inside the paint to shoot another jumper. Unfortunately, the ball did not go through the net and instead came out the left side of the rim where Green used his 6-foot-9-inch stature to grab the ball over Hatters' players with both hands and placed it inside the hoop.

As the crowd cheered, the play was reviewed to see if Green had beaten the buzzer. The officials claimed the basket good and the Owls won their third game in a row.

"The team just refused to lose," head coach Tony Ingle said.

Stetson played a competitive first half, staying ahead of the Owls. KSU shot about 16 percent from field goal range with less than seven minutes to play in the opening half. They were struggling with their shot selection; however, Stetson had nine fouls compared to the Owls' four.

With the clock at 4:10 to play in the first half, the Black and Gold were able to find each other and use ample teamwork to come back. Sophomore guard Markeith Cummings grabbed a steal and run down to Owls' territory where he made a wide-open layup. The Owls trailing, 30-22, responded with Artie Marine's first 3-pointer for the night and KSU was only down by five.

KSU ended the first half behind, 32-27, with a layup by Dixon which did not make it inside the before the buzzer.

Coming back in the second half, senior guard McConnell made a pullback jump shot, giving the Owls their first lead of the game. Luis Jacobo for the Hatters responded with a one of his four 3-pointers in the game as his points would give Stetson a 10-point lead with 11 minutes to go.

Battling for the lead, both teams were

juggling points to stay ahead. With 10:50 remaining in the second half, Marine made his second 3-point shot bringing the score to 51-42. The After Marine's third 3-point shot, the Owls were energized and pumped, outscoring the Hatters 9-2 in less than two minutes.

Marine's fourth three-pointer led to him earning a career-high of 12 points. After his addition, both teams would continue to combat for the lead.

Green picked up two more points with 3:36 to play tying the game at 63. His last theatrical performance ended the night and Owls fans left relieved.

Marine's 12 points all came from behind the arc as he added four rebounds to his stat line. Cummings ended the night with 22 points accumulated mostly from free throws. Green trailed behind him with 17 points and 10 rebounds, giving him a third-straight double-double. The two were the top scorers for the Owls.

"Tonight, Artie was a hero," Ingle said. "I felt great having a new career high and I'm excited, but I will continue to work hard every day," Marine stated.

The win places the Owls sixth in the A-Sun Conference standings as the conference tournament championship creeps closer.

Thrilling win over FGCU

In Thursday's 69-68 victory against Florida Gulf Coast University, the Owls relied on another late-game winner.

Dixon collected himself as he dribbled up the court with the clock under 20 seconds and KSU down 68-66. He watched the clock tick down to 10 seconds and made his move, a step-back three-pointer that hit the bottom of the net with seven seconds left to put the Owls up by one.

Florida Gulf Coast missed its chance in the final possession for an Owl's victory.

"I couldn't tell you how proud I am that we kept our composure and guys continued to play good defense," Ingle said

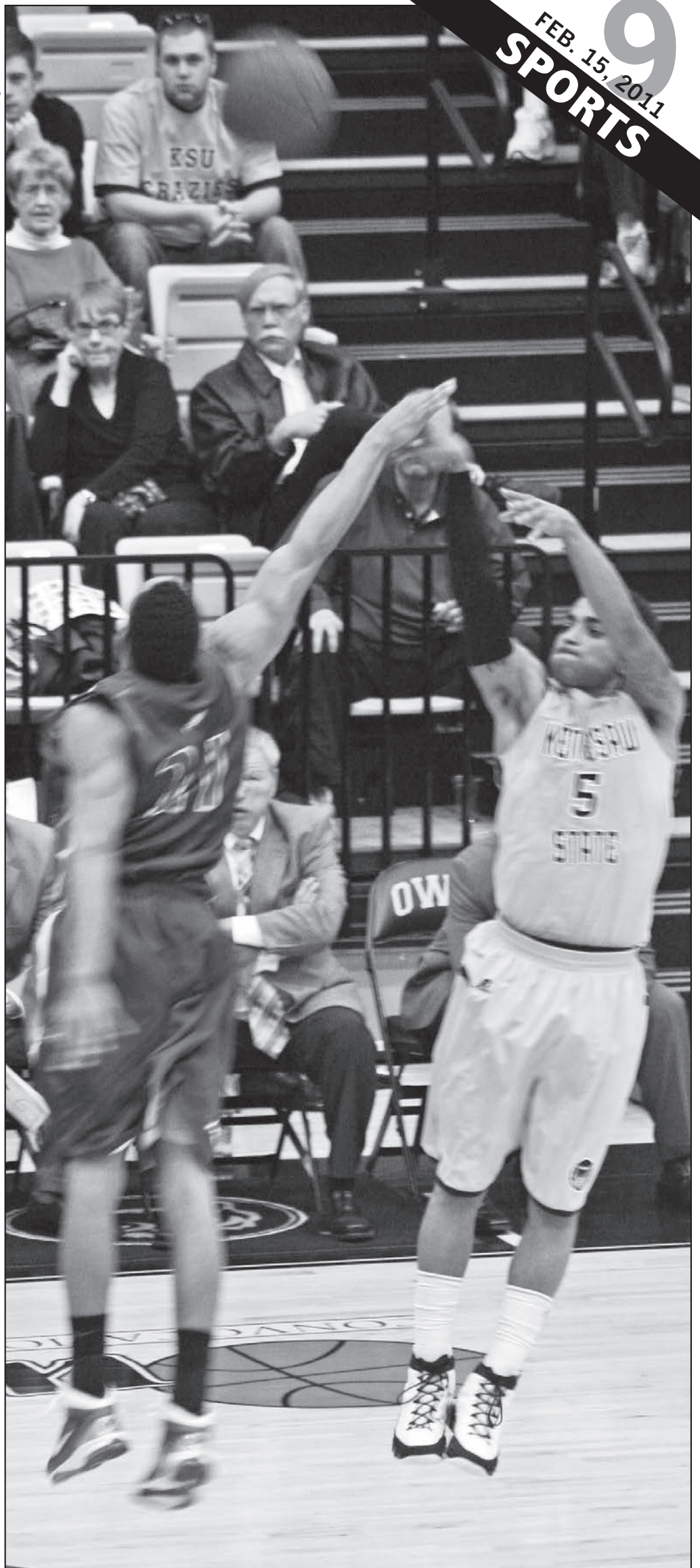
In the second half, Florida Gulf Coast overcame a late 8-point deficit in the final 4:22 to go up two with 24 seconds remaining, but the Owls fought hard and ground out the victory.

"Coach Ingle has really been working with me on keeping my composure and to stay level-headed when these (late-game) situations come up," Dixon said.

McConnell and Cummings made KSU history in the second half by surpassing the 1,000-point mark for their careers, becoming the 12th and 13th players to do so, in back-to-back possessions.

With 7:15 remaining in the second half,

See BASKETBALL Page 10



Melissa Davis | The Sentinel

Junior guard Spencer Dixon drained a 3-pointer with just over 3 seconds to go to give the Owls a one point lead before a winning defensive stop Thursday.



NEW YORK PIZZA

\$4.99

STUDENT
LUNCH
SPECIAL2 CHEESE SLICES &
FOUNTAIN DRINK

Mon. – Fri. 11 a.m.-3 p.m.

*Must show student ID

**Not valid with other specials

10% OFF

for KSU Students and Faculty

*not valid with specials

LIVE
ENTERTAINMENT

- **MONDAY: Open Mic 9 p.m.**
\$50 cash for best artist
- **TUES: 7.30 p.m. Texas Hold 'Em**
- **WED: Team Trivia 8 p.m.**
Prizes for first three placed teams
- **THURS: "Thirsty Thursdays"**
\$1 drinks all day. Live music 9 p.m.
- **FRIDAY: Live bands 9 p.m.**
Call for details
- **SATURDAY: Team Trivia 7:30 p.m.** Prizes for first three placed teams, followed by "Signature Saturdays" 9 p.m.-2:30 a.m. Ladies 18, Gentlemen 21... Get down to all the latest hits in Kennesaw's coolest environment!

600 Chastain Rd. • Kennesaw, GA 30144

770-424-9000

(Additional Parking at Embassy Suites)

Ice hockey

KSU continued its series with Southeast division No. 1 Florida Gulf Coast University. The Owls dropped both games to the Eagles, 11-2, and, 7-3, in south Florida to finish the four-game series. The Owls next game will be at home Wednesday, taking on the Georgia Tech Yellow Jackets and plan to "Pink Out the Rink" for breast cancer awareness. The players will be wearing pink home uniforms that are being auctioned off until 7p.m. Wednesday.

Lacrosse

KSU Lax defeated Berry College on the road, 7-3, to improve to 3-0 in the Division II South Eastern Lacrosse Conference. They play a conference match at home Friday against Georgia State at the Owl's Nest.

Tennis*Men's*

The Owls' took to the road for four matches Friday and Saturday. In Friday's matches the Owls split beating Young Harris College, 7-0, before falling to Presbyterian, 5-2. Saturday KSU crossed the state line to play in Montgomery, Ala. against Alabama State and Alabama A&M. The Owls won both matches, 7-0, and 6-1.

Women's

The women's tennis team swept all four matches this weekend, improving to 6-0 overall on the spring season. Friday, the Owls defeated Young Harris College, 7-0, and later beat Presbyterian, 6-1. Saturday, the Owls played in Montgomery, Ala. winning against Alabama State, 7-0, and Alabama A&M, 6-1.

Golf*Women's*

The women's golf season started Sunday at the UCF Challenge in Orlando, Fla. and finished the first day in 8th place after a 4-over par 292. Sophomore Ket Premuchen is currently 3rd on the leader board after a first round 4-under par 68.

Softball

Competing in the Southern Miss Mizuno Challenge Saturday and Sunday, KSU went 4-0 over the weekend beating Central Arkansas 3-2 in extra innings Sunday and 4-2 Saturday. The Owls fared well against the Golden Eagles winning 8-6 Sunday and 9-4 Saturday.

BASKETBALL cont.

Cummings, who only scored four points in the first half, hit two free throws to surpass 1,000 points. In the Owls' very next possession McConnell, who needed three points to reach the milestone, knocked down his fifth 3-pointer of the evening with 6:07 remaining to join the club.

"Coach gave me an opportunity, I had a dream, and he allowed me to fulfill that dream," McConnell, a walk-on, said of his achievement.

The first half was back and forth, with the Eagles gaining the early advantage, while the Owls would come roaring back within striking distance only to have FGCU go on another run. KSU tied the score five times in the first half as FGCU's largest lead was five early in the period. The Eagles took a one-point, 35-34, lead into halftime.

Green chipped in a double-double with 13 points and 13 rebounds. McConnell was the scoring leader for the game with 19, while Cummings added 14.

Camels can't beat Owls

KSU triumphed over the Campbell University Camels with a 14-point victory Feb. 7, 78-64.

The Owls finally clenched a win after a five-game losing streak, which sparked a three-game winning streak at home.

"I thought we came out flat," Ingle said. "We got the ball back and tied it up at halftime. We came back at half and were ready to play."

Ready to begin the second half, the Owls came back focused and determined. They took their first lead in the game with 18:20 left in the half.

The Owls' sharp defense dominated the Camels and they were forced to turn the ball over three times within two minutes.

With back-to-back 2-pointers by Cummings and Dixon, the Owls did not allow Campbell to get ahead for the rest of the night. McConnell made his 200th 3-pointer with 9:20 remaining in the game to give the Owls a 54-50 lead.

"He predicted the game was over at that moment," Ingle said.

Cummings tried to add another two points but missed but the ball was accidentally tipped inside the hoop by a Campbell player giving the Owls a 60-55 lead.

With 2:31 left to play, Cummings was double teamed, fouled and still made a layup to give the Owls an 11-point lead. Moments later, he jolted down the court to make another layup. Less than a minute later a block by Green, Dixon was able to maneuver through Campbell players and make a layup putting the Owls up, 73-60.

Cummings led the Owls with a season-high 31 points. Three other Owls scored in double digits including McConnell with 13, Green with 10 and senior forward Matt Heramb with 11 points. Green also had 13 rebounds ending the night with a double-double, for his first of three in the week. McConnell made his 200th career 3-point shot during the game, as he became just the second Owl to reach that accomplishment.

KSU out-shot the Camels in free throws 27-12 and out-rebounded the Camels 36-33.

"We passed the ball well, found opened men and played great defense the second half," Ingle said. "I couldn't say enough about the players. Kelvin had big threes and Markeith was a man inside."

The win was Cummings' third game in which he has scored 30 points or more. His season high for this year is only one away from matching his career-high 32 points against Belmont last year.

The Owls play tonight at 7 p.m. in Macon for game two of this season's Battle of I-75 with Mercer.

Men's Golf wins The Match Play tourney

Jack Morbitzer
SPORTS EDITOR

KSU Men's golf continues a strong 2010-2011 campaign after winning The Match Play at TPC of Tampa.

The Owls defeated the Ball State Cardinals in the final round 3-2 to claim their third championship in five tournaments.

"I am so proud of what this team did this week," head coach Jay Moseley said in a statement. "Every one of our guys played well and fought hard in every match."

After the first two matches of the final round tied, and with the score 1-1, KSU won two of the final three matches to best Ball State.

Senior Chad Wilson and sophomore Ben Greene won their pairings 4-3, senior Chad Nagy and sophomore Peder Lunde Hermansson tied in the first pairings to keep KSU's hopes alive, earning a half point each for their ties.

Jonathon Klotz dropped his match 4-3 but it wouldn't be enough for the Cardinals to win.

"We controlled all of our matches with clutch shot making and we were confident at all times, which was key to our wins in match play," Moseley said in a statement. "Our minds were focused all week and I truly could not be happier with our performance. Winning always feels great."

Greene, like KSU, finished a perfect 4-0 for the tournament. Wilson finished 3-1.

In the brackets, KSU first defeated Charleston Southern 3-2 to advance to the second round where they defeated conference foe Campbell to move on to the championship bracket.

There, the Owls defeated Marquette 4.5-.5, who knocked out No. 26 ranked Notre Dame in round two.

The Owls return to the course March 6-8 for the Barefoot at the Beach Intercollegiate at Myrtle Beach's Surf Club Golf Course.

Lady Owls jeopardize conference position

Michael Foster
STAFF WRITER

The Kennesaw State Lady Owls basketball team took a hit in the conference tournament race at home on Saturday, falling to the Stetson Hatters, 65-52.

Sophomore forward Sametria Gideon dominated in the stat column despite the loss, putting up 22 points and 16 rebounds. Gideon was the team's offensive focal point throughout the contest.

"They did a good job of denying our perimeter players tonight," said Gideon. "They stopped our two and three guards, and our point guard, and really made it tough for the post players down low."

Season scoring leader Angie Smith (14.3 points per game) and sharpshooter Ashley Holliday (10.3 points per game) found it nearly impossible to beat the Stetson defense, combining to shoot just 3-24.

After the game, Coach Tilley explained why the dynamic duo had an off night.

"They've both had some really good games as of late, so opponents are starting to recognize that and really game plan to take them out of the equation."

With the loss, the Lady

Owls (7-16, 4-11) have fallen into the eighth seed in the Atlantic Sun Conference, while the Hatters victory gives them a 9-6 conference record and a comfortable position in the standings. The top eight teams in the conference at the end of the schedule will qualify to play in the Atlantic Sun Conference Tournament Championship in Macon, Ga.

The winner of the A-Sun championship, no matter their record, gets a spot in the NCAA Women's Division I Basketball Championship.

"We control our own destiny," said Tilley in regard to the Owls race for the tournament. "We might not even make the conference tournament."

The only team threatening the Lady Owls for the final seed is Mercer, who is currently two games behind KSU as the teams split the Battle of I-75 rivalry series this season. KSU fell to the Lady Bears Thursday night in overtime after overcoming a 20-point deficit in the second half.

The Lady Owls have five conference games left on the schedule, as well as a March 13 road trip to Chapel Hill to play North Carolina.

GET

KSU XP ERIEENCED!

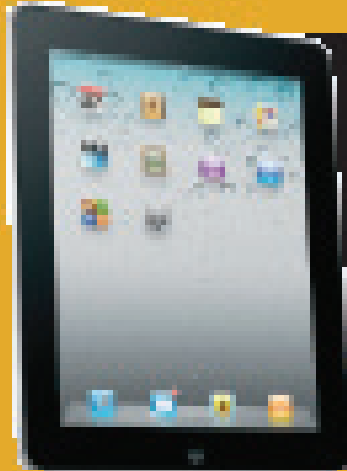
STUDENT RECREATION CENTER
ROOM 135

KENNESAW STATE
Owls
BASKETBALL
THURSDAY 2/10
MEN vs. FGCU - 7:30 PM
GREEK NIGHT
SUNGLASSES GIVEAWAY TO THE FIRST 500 STUDENTS!
MONDAY 2/14
LADY OWLS vs. FGCU - 7:00 PM
VALENTINE'S DAY WITH SCRAPPY!
ADMISSION IS FREE FOR ALL STUDENTS!
WWW.KSUOWLS.COM

Attention first-year students & seniors:

How engaged are you with KSU?

Help us improve our programs and services. Selected students will receive an invitation via KFU email in February to complete the National Survey of Student Engagement (NSSE). If you are one of the lucky students selected, let your voice be heard! Each responding student represents hundreds of peers, so every response matters.

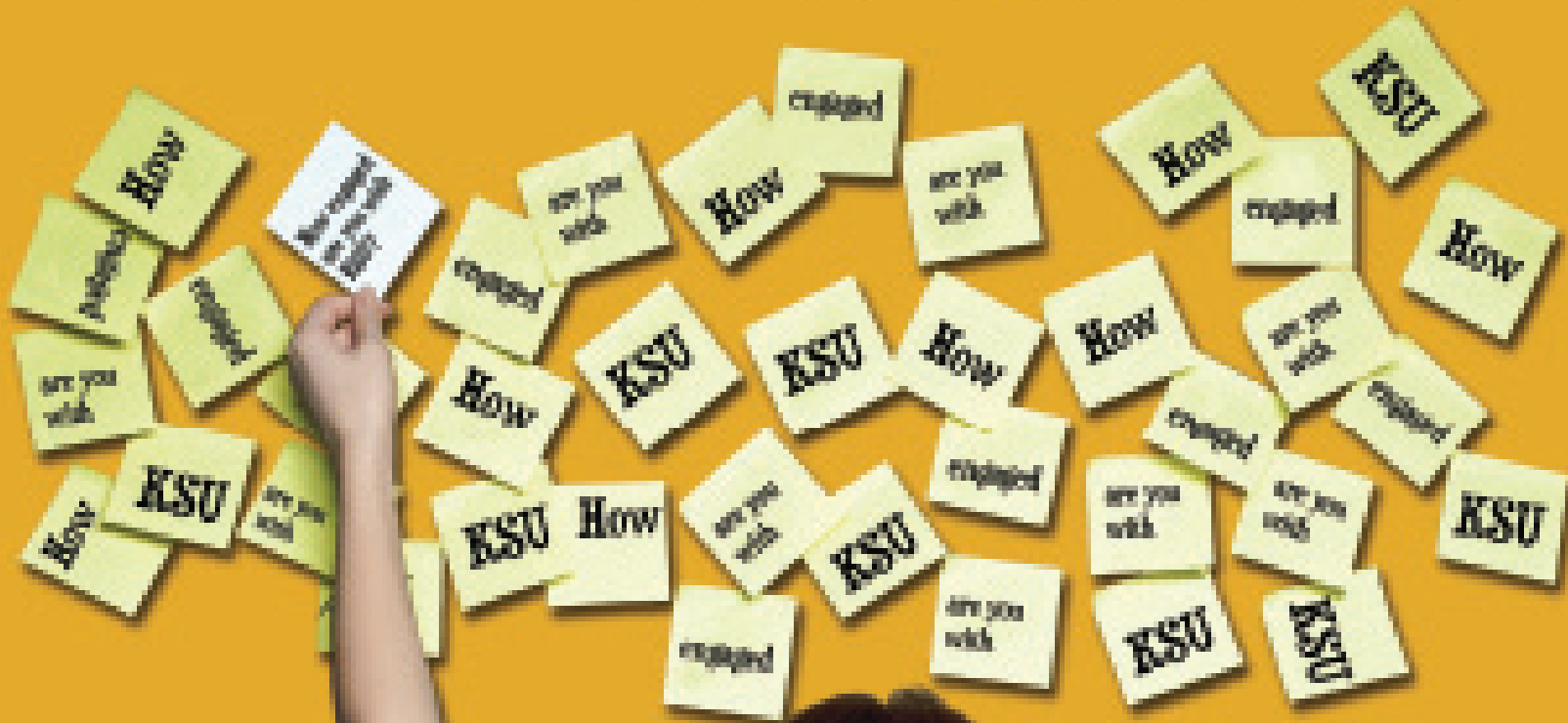


And it gets better... respondents are eligible to win a **free iPad!**

Questions/Comments?

Email jratchfo@kennesaw.edu

Learn more about NSSE at <http://nsse.iub.edu/>



Never miss an important KFU email again! Forward your KFU email to your preferred email account today.

