

THE SENTINEL



**HIGH SCHOOL TITAN'S COACH
HERMAN BOONE VISITS KSU**
Features • Page 5



POLICE • BEAT
What you gonna do when they
come for you? • Page 2

MEN'S BASKETBALL

Keeps undefeated streak alive
Sports • Page 9



Founded 1963 • Volume 38 • Issue 17

www.ksusentinel.com

Kennesaw State University • Kennesaw, Ga.



online

Results of our last poll:

"Groundhog Day is Feb.2
What is your prediction?"
• I saw my shadow - six more
weeks of winter: **47%**
• Spring weather will arrive
early: **53%**

Take our next poll:

Go to:
www.ksusentinel.com

***3,117 people subscribe to
The Sentinel E-mail edition.
Be the 3,118th!
Go to ksusentinel.com and
register!**



inviewpoints

**KSU faculty promoting
liberal views?**

Read Viewpoints new
columnist Tracy Turner
page 3



infeatures

**Psychology of a nose
picker: Leslie
Thompson's nose knows.**
Page 7



insports

**KSU Softball back on
campus.**
page 8

The Sentinel
Building 5, Room 277
1000 Chastain road
Kennesaw, GA 30144-5591

Newsroom: 770-423-6278
Advertising: 770-423-6470
Fax: 770-423-6703
Advisor: 770-499-3083

E-mail:
sentinel@students.kennesaw.edu
www.ksusentinel.com



A Glimpse of HOPE

HOPE Scholarship in danger of extinction

Melissa Spielholz
Staff Writer

Recipients of the HOPE scholarship may be losing their funds. The Georgia General Assembly began its sessions on Jan.12, 2004. Among other issues, the General Assembly must decide the fate of Georgia's HOPE scholarship program. From its inception in 1993, the HOPE scholarship has helped an estimated 748,000 college students, awarding more than \$2.1 billion. Of those students, 19,512 attend KSU totaling an estimated \$76 million. That is an average of \$3895 per student recipient at KSU.

With its current offerings, the HOPE scholarship fund will be depleted by 2006. This problem leaves the General Assembly with a tough question: "What must be done to save the HOPE scholarship?"

Numerous proposals by the HOPE Commission have left lawmakers in a predicament, while many of these suggestions have upset both students and parents statewide.

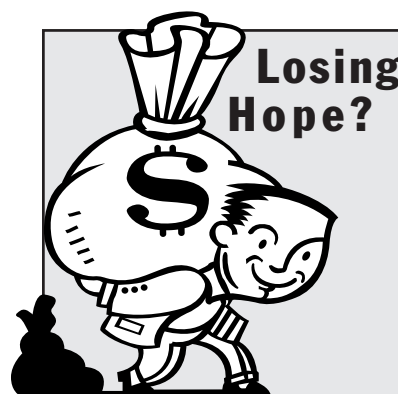
Lt. Gov. Mark Taylor proposed a 3-year tuition freeze, as noted in the press release from the annual breakfast conference. According to the AJC, University of Georgia President Michael Adams does not agree with Taylor's proposal. "We have a very high quality at low cost," Adams said. "The worst thing we could do is get caught in a position of lowering quality. There is a correlation between cost and quality."

On the other side of the political spectrum, Gov. Sonny Perdue suggests the incorporation of SAT scores as a factor in determining HOPE scholarship recipients. His proposal raises the issue of grade inflation.

"Knowing that there is a perception of grade inflation, I got to thinking about where our SAT scores would be today if, 10 years ago, they had been a component of the HOPE scholarship," said Perdue. "My theory is, we would not be 50th out of 50 states. Kids ought to take a certain pride in earning a HOPE scholarship, and I think as they take that pride in earning the HOPE scholarship, they will take pride in their scores on the SAT, regardless of where they go to college."

Many parents and students are opposed to the proposal of incorporating SAT scores. Geronimo Lluberas, a freshman at KSU, disagrees with the proposal. "It would be somewhat unfair," said Lluberas. "Not everyone scores well on tests, but that does not mean they are not good students."

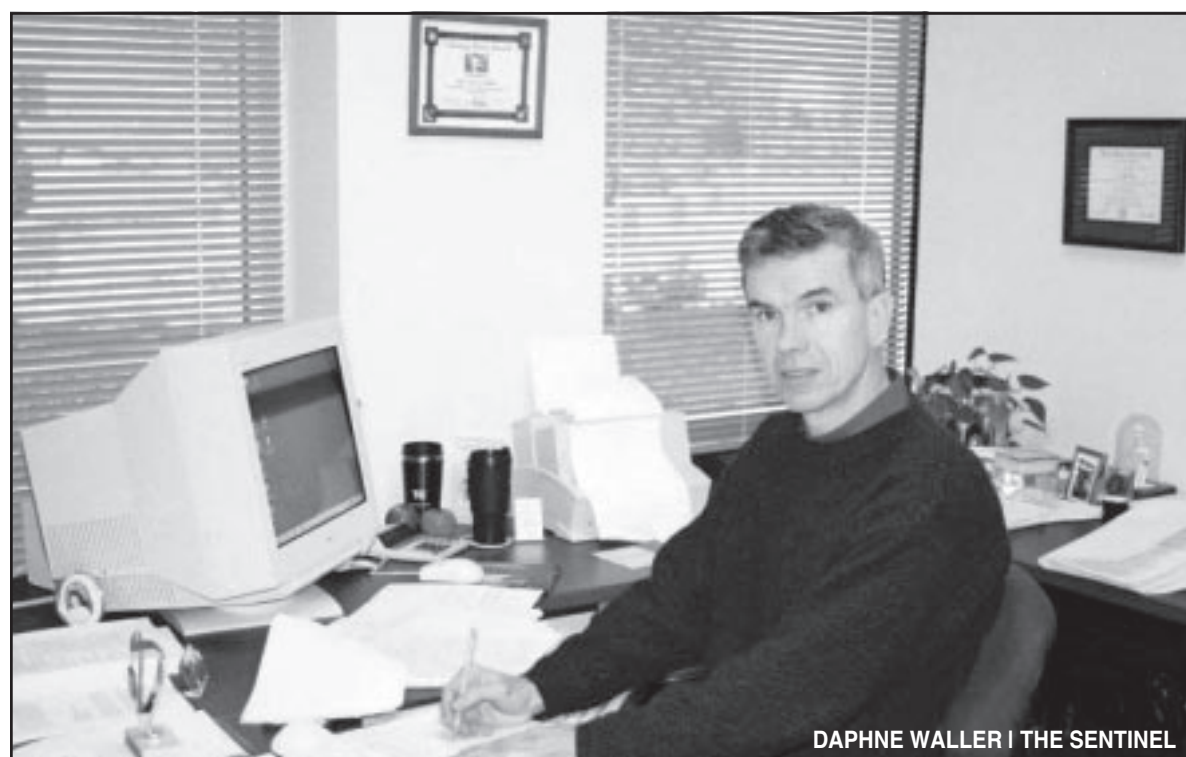
At the same time, some students feel that incorporating test scores will help limit the number of recipients. "Although I do not think this is a cure



Losing Hope?

According to The Atlanta-Journal Constitution, some of the HOPE Commission's recommendations are as follows:

- Eliminate payment for books and fees, effective in the 2004-2005 school year
- Require a minimum SAT score
- Use end-of-course tests, now in development, to determine eligibility
- Raise the required grade-point average
- Pay a flat grant to all HOPE recipients, not to exceed expenses for the program
- Cap the number of eligibility hours for the HOPE grant at 95 quarter hours (63 semester hours), effective in the 2004-2005 school year



Dr. Terry L. Faust, Director of Student Financial Aid.

all, it is certainly a step in the right direction," said Mike Montgomery, a junior at KSU. "It will at least tie the HOPE to something more reliable than what has become a very subjective 'B' average."

Another proposition to save the HOPE scholarship is the removal of HOPE funds to cover the costs of books and fees. "Mandatory fees are just that, they're mandatory," said KSU Student Government Association Secretary of Business and Finance, Tony Stokes. "You can not

attend without paying the fees."

In addition to his feelings on the removal of the funds, Stokes, with the support of SG, has written a resolution that has been submitted to the Student Government Senate. The resolution explains that "we (the students) support a merit-based, complete HOPE scholarship."

SG has contacted many other Georgia universities and honor-societies in hopes to rally support across the state. "The goal is to come up with a plan and once we can all

speak as one voice," Stokes said, "to go down to the capital and find someone from the Higher Education Committee and present our ideas, our views as students, a students prospective...students work hard and we are trying to organize and let our voices be heard."

With a sensitive issue at hand, Senator Bill Hamrick, Chairman of the Higher Education Committee along with State Representative Louise McBee, are actively fighting to save the integrity of the

SEE 'HOPE,' PAGE 2



ERIKA BUSBY | THE SENTINEL

Ingle in the zone

Coach produces show

Erika Busby
News Editor

KSU is climbing the ladder and extending their boundaries. With new buildings and new students come big steps for KSU organizations.

Tony Ingle, the head coach of the men's basketball team, has rolled up his sleeves and tackled something that is huge for KSU. The arrival of the Convocation Center/Arena paves a road for the men's basketball team to share their games with a local audience. "When I was hired to be the basketball coach here, one of my responsibilities was to enhance the program in every aspect we could," Ingle said. "Part of that was to increase the awareness of the basketball program throughout our community."

Ingle has been working hard to do just that. He has raised money to be able to televise his show, *Courtside with Tony Ingle*.

After searching for someone to produce the show, he found Ian Feinberg and the students of the Entertainment Technology program at Chattahoochee Technical College. Feinberg has agreed to produce 10 episodes of

Courtside with Tony Ingle this basketball season with plans to televise next season's games and extra shows if the team makes the playoffs.

"All the students man all the different positions," Feinberg said. "They do everything."

The studio and control room at CTC are very well equipped to produce *Courtside with Tony Ingle*. The students that are directing and producing the show are in the latter half of the program.

Feinberg says the basis of their program is work ethics. The students work on a lanyard program which Feinberg describes this as "a belt program in karate." Students who take more initiative and volunteer themselves in leadership roles move up.

"From week to week, we start moving people up," Feinberg said. "So, they do all of the aspects of the production. They shoot the game, bring them back and edit the highlights together, and [they also] shoot one feature per week."

"I have been very impressed with Chattahoochee Tech and the quality of the people involved making sure it is run properly," Ingle said. "Ian, I think, is a master because he is the one

SEE 'TONY INGLE,' SPORTS PAGE 9



RICHARD L. JOHNSON | THE SENTINEL



ERIKA BUSBY | THE SENTINEL

Clockwise from top left: The set of *Courtside with Tony Ingle* at CTC; Ian Feinberg in the control room at Chattahoochee Technical College; Head Coach of Men's Basketball Tony Ingle.

Protect your computer from viruses, trojans

Tony Sarrecchia
Staff Writer

Last week was a busy week for computer viruses. Win32.Bagle.A@mn made the rounds by disguising itself as a file sent by a system administrator or a friend.

Once executed, by the user clicking on it, it opened the Window's calculator and embedded itself onto the users hard drive.

After changing a few lines of code in the Windows Registry (i.e., the brains of the PC), the virus was e-mailing itself to everyone in the users' address book. While the initial infection spread quickly, most anti-virus software companies (CA, Symantec, Sophos) responded quickly with antidotes, preventing a repeat of the Sobig virus.

Some anti-virus experts are concerned that a second, more

potent, variant is going to arrive on January 28, the day that Bagle.A is scheduled to expire. According to Daniel Zatz, Security Director of Computer Associates in Australia, "One of our biggest concerns is that if we look back a year ago at the Sobig variants, they all had drop-dead dates and every time one hit that drop dead date a new variant came out; a new and improved variant of it." (Andrew Colley, "Virus alert: Beware of Dodgy Bagle" January 19, 2004. <http://www.silicon.com/software/security/0,39024655,39117841,00.htm>).

On Jan.16, Sophos, an anti-virus developer, released a warning of a Trojan called Mmdload, which attempts to find PayPal forms stored on a user's hard drive. If the Trojan finds a PayPal account, it



attempts to send the completed accounts to a Russian web site. At press time, this Trojan has not reached a critical infection rate.

To lessen the chance of infection from a virus or Trojan (a Trojan infects computers, a

virus infects files on the computer), computer owners should keep their anti-virus software current, never open attachments from unknown sources, back up files regularly and never download pirated software, music or movies.

POLICE • BEAT

Compiled by Richard L. Johnson

On the evening of Jan. 14, officers responded to a fight at University Place. Officers were able to determine that a verbal dispute had taken place between the occupants of two different apartments followed by an assault. According to the police report, three males from one apartment began arguing with a 28-year-old man on the balcony of the apartment above them. **They forced their way into the second apartment and attacked the man.** A 19-year-old female, who was also in the second apartment, was pushed down and injured.

The three suspects were arrested and charged with criminal trespass, simple battery and battery.

On Jan 15, at about 12:20 p.m., an officer responded to the Clendenin Building to **check on the welfare of a young child who had been left alone in the hallway.**

According to the report, **the 9-year-old girl told the police "she did not go to school today because she was sick, and that she had come to school with her mom."** The child was able to show police which

classroom her mother was in. When contacted by the officer, **the mother was unsure how long she had left her child alone** and that her class would be over in about 20 minutes. The officer explained that it was unsafe to leave a young child alone, and the child could not be left in the hallway while her mother attended class. The mother then left with the child.

At 1 p.m. on the same day, police **responded to a parking dispute on Frey Lake Road.** The responding officer determined that a property owner was upset over a student parking in his driveway.

According to the report, **the house had previously been rented to a fraternity and the student was there to pick up some of his fraternity's items.** Each subject claimed to have been battered by the other. Both parties refused to press charges.

On the evening of Jan. 15, **a female reported that someone had drawn a gang symbol on her car.** According to the report, she thought it could have been done by several men "she gave...the finger" to. The officer indicated that the symbol had been written in the dirt on the windshield.

HOPE, FROM PAGE ONE

HOPE scholarship, but they are forced to agree that something must be done to save the state's funding.

"I feel very comfortable with their (the HOPE Commission) recommendations," said Dr. Terry Faust, Director of the Student Financial Aid. "I support those recommendations, and I want us to preserve the HOPE scholarship program for generation after generation. In order for that to happen, we

have to make some significant changes."

Regardless of the turnouts of the many HOPE proposals, Faust assured students that, "If changes go through and if HOPE value is reduced, there will be a greater challenge on Financial Aid offices to help students replace their HOPE loss. This

"I support those recommendations, and I want us to preserve the HOPE scholarship program for generation after generation."

is something we are prepared to do."

KSU offers many alternatives to students for financial aid. Faust explained there are over 200 instructional scholarships available to students on the

web through Feb. 15, 2004 for the 2004-2005 school year. Other than KSU offered scholarships, there are several other alternatives including numerous types of grants and loans."

To learn more about available financial aid go to: www.kennesaw.edu/financial_aid or attend KSU's Annual Financial Aid Fair Feb. 26, 2004 from 10 a.m. - 2 p.m. in the University Rooms in the student center.

"A Glimpse of the Past...Inspiring Dreams for the Future: 20 Years of Recognizing Black History"

The 2004 Campus-wide Observance of Dr. Martin Luther King Jr.'s Birthday and celebrations of Black History Month

Presented by The African-American Student Alliance (AASA) and The Black History Celebration Committee

Kennesaw State UNIVERSITY

"Now is the time to lift our nation from the quicksands of racial injustice to the solid rock of brotherhood."
~ Martin Luther King Jr. "

FEBRUARY & MARCH EVENTS

LOVE THROUGH THE AGES: A SPOKEN WORD EXPERIENCE TUESDAY, FEBRUARY 10, 2004

Time: 7:30 PM
Location: KSU Carmichael Student Center Leadership Room
Experience a night of passion and love vibes as we creatively engage in poetic and prose exchanges of love from the Black perspective. All poets and expressionists are invited to feature work focusing on love past, present, and future during the open mic portion of this event. Our featured performance includes Ms. Kathy Matthews, who will share a story of Black love juxtaposed to the times. Our featured spoken word artists are the LivePoets Society, based here in Atlanta, GA.

FUNNY VALENTINES COMEDY NIGHT THURSDAY, FEBRUARY 12, 2004

8:00 PM
Location: KSU Carmichael Student Center University Rooms
Come prepared for a night of fun and laughter as we showcase humor from many black perspectives.

STORYTELLING: CELEBRATING THE ORAL TRADITION OF AFRICAN AMERICAN CULTURE WEDNESDAY, FEBRUARY 18, 2004

7:00 PM - 9:00 PM
Location: KSU Carmichael Student Center University Rooms
In honor of our oral traditions, join us for the sharing of events of legendary and factual proportions that have shaped our community. Local storytellers from the community will delight you with their vocal imagery of accounts of our past. Families are encouraged to attend this event.

MARCH EVENTS

WOMEN OF COLOR: A FORMULA FOR SUCCESS TUESDAY, MARCH 24, 2004

Time: 7:00 PM
Location: Leadership Room
Join us for a meaningful encounter with successful women from the Atlanta community. A panel of guest will share their stories of victory and challenge along their journey.

KSU CELEBRITY SOFTBALL MARCH 20, 2004

Time: 12:00 - 4:00 PM
Location: Kennesaw State University Intramural Field
Join us for a family affair, as we host a KSU celebrity softball game between students, and faculty and staff! If you are interested in playing or cheering, please contact us at kusaas@yahoo.com.

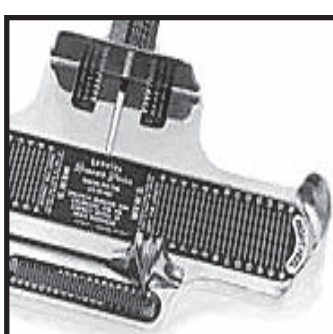
For more information on these, and other forthcoming KSU Black History Events, please visit the Office of Minority Student Retention website at www.kennesaw.edu/stu_dev/msrs/.

A pdf copy of the events brochure is also available at www.kennesaw.edu/stu_dev/msrs/bh2004.pdf.

For updated information on AASA and the Office of Minority Student Retention Services programs, please visit the KSU Student Development Center Calendar of Activities at www.kennesaw.edu/stu_dev/calendar.html

Program funded by KSU student activities fees (SABAC).

*Note: University Rooms are located in the Student Center addition.



See if The Sentinel newspaper fits you - 770-423-6278 or online at www.ksusentinel.com

Find it. Get it.



VIEWPOINTS

Editorial Board

Eric Croas
Editor in Chief
emc4276@students.kennesaw.edu

Erika Busby
News Editor
sentinelnews@hotmail.com

Heather Croas
Features Editor
hnc1140@students.kennesaw.edu

Grant Voyles
Viewpoints Editor
gbv2385@students.kennesaw.edu

Matt Cutrona
Sports Editor
mwc6973@students.kennesaw.edu

Heidi Paruta
Photo Editor
hlp8009@students.kennesaw.edu

quickquote
"About the only thing lacking is a wild and crazy student section..."

Tony Ingle, coach for Men's Basketball - see the article on pages 1 and 9

Contact Us
Mail
The Sentinel, Bldg. 5, Rm. 277,
1000 Chastain Road,
Kennesaw, Ga. 30144-5591
Visit
Student Center 277
Phone
770-423-6278
Email
sentinel@students.kennesaw.edu
or
sentinel@pigseye.kennesaw.edu
Online
www.ksusentinel.com

Letters to the editor may be submitted by the methods listed above, though the preferred method is through the website. Please include your full name, year in school and major. Also include your phone number. You will be contacted for verification purposes. **Please attempt to keep letters to 250-300 words.** Letters will be edited for length and clarity.

Sanctions for poor attendance

Joel Guerra,
Viewpoints Columnist

Why would it count against me if I did not show up to class? The consequences for missing class are not just a slap on the wrist, but points deducted from my grade for not showing up to class.

Now mind you, personally I am not into skipping class, because I do not like the feeling of being left behind or missing out on important knowledge. I certainly do not like the feeling of paying \$1389.00 per semester and not getting anything good out of it. At the same time, I was the one who paid the money, so shouldn't I have the right to waste my money? It is MY money right?

If I were to go out and buy something like a nice armchair or even a car, and then proceed to take a sledgehammer and destroy it out of my own free decision, is there anyone there to punish me for it? Do I walk out of whichever store where I made the purchase with an additional \$5 deducted from my wallet?

If I were to witness someone

doing that exact same thing (especially being from a developing country), in all honesty, it would absolutely break my heart. The fact would still remain that they DID pay for it, and after the exchange of money for product, the chair or car is their's to do whatever they like with it, as long as it does not impose on anyone else.

How could the person be imposing if they helped the store achieve what they wanted to do, which is sell the product, and helped the person in question achieved what they wanted to do, which was to buy the product. No one is hurt in the process, but the person in question would no longer have a perfectly good chair or car to use.

If I were a professor, and I saw students that consistently did not show up for class, it would allow me to weed out the ones who were really interested in learning and doing well in the class. The absentees would not really bother me. I would even go as far as to reward the students who had perfect attendance. The way I see it, the students with poor attendance are already punishing themselves by wasting their money.

A green November?

When thinking about the issue that will be the focus of the 2004 Presidential Election, the most obvious candidates are national security and the economy, however we cannot forget the underlying second-tier issue: the environment.

There are signs that environmental issues could play a key role in what will most likely be a close race. It is likely that Bush's views on environmental regulation and those of the ultimate Democratic nominee will clash dramatically. Bush's abhorrent track record on environmental concerns has already angered many Americans who value our natural treasures.

Bush has already weakened the Clean Air Act and eased restrictions on logging in the name of "healthy forests," but now he has his sights set on something even bigger - the gutting of the environmental regulatory process itself.

In 1970, President Richard Nixon signed into law the National Environmental Policy Act (NEPA), which basically directed fed-

eral agencies to "prevent or eliminate damage to the environment."

Yes, the language is more than a little broad. The statute obligates all federal agencies to examine and report to the public any and all ways in which a project might harm the environment. It requires impact statements and public input on any project that could potentially damage the environment.



Grant Voyles
Viewpoints Editor

NEPA is the cornerstone for all other environmental regulations currently in place. More importantly, NEPA is democracy in action. For over three decades, NEPA has provided citizens with information about the projects that federal agencies are considering and has given those citizens a voice and a forum for their concerns.

The open process that NEPA creates insures that the final decision balances economic, environ-

Diversity carries hidden bias

Tracy Turner,
Viewpoints Columnist

Diversity. Since arriving at KSU three years ago, every professor I have had has made it a point to insist in some way that diversity is important. From literature to biology and education to history, these professors have expounded the idea that we must gather a wide variety of choices from a wide variety of sources in order to better understand the world in which we live and those we share it with. They are certainly right, aren't they? Isn't it true that we understand others better when we learn about them and accept them as they are, each one different yet equally valuable in the quest for knowledge and understanding?

Yet there is an area of our lives in which those in power would like to keep us from embracing diversity. Most students don't see it even though they must witness it, as I do, in so many classrooms and textbooks. That area is intellectual diversity. It is no secret that a vast majority of college professors are liberal in their dogma. It is also no surprise when some of that philosophy shows up in their teaching. Some professors blatantly advocate liberal ideals, occasionally to the exclusion of any other position, but what may surprise you is the extent to which this is true.

At the beginning of my college experience, there was an occasional reference to conserving the environment or an offhand remark about the right to a living wage. Various textbooks assigned had decidedly leftward slants. Over time, however, in class after class and book after book, the collected mass of liberal influence has become so great that I can no longer sit quietly in class and hold my tongue. When I began to speak out and offer different points of view, my opinions were sometimes ignored, sometimes dismissed,

but rarely heard and taken seriously.

To give some examples, in an education class, students are required to join a teachers' union or purchase mandatory insurance at their own expense. In a different education class, our professor told us that homeschooling our children would damage them psychologically. In an American government class, we had a guest speaker from the Green Party. In a theater class, our professor proclaimed the unfairness that the budget is so small for the NEA (National Endowment for the Arts). I recently received a blanket e-mail reminder from the head of a department that declared "Howard Dean for President."

Apparently, I'm not the only one who has noticed this imbalance. I recently discovered that the Senate Committee on Health, Education, Labor & Pensions has had an oversight hearing on the subject, http://www.labor.senate.gov/bills/031_bill.html. Also, David Horowitz has founded an organization, Students For Academic Freedom, <http://studentsforacademicfreedom.org>, that advocates more diversity in higher education faculty. In an article on the website, "Missing Diversity on America's Campuses", Mr. Horowitz lists studies done at various universities. In all of those studies, at least 90% of the faculties are liberal.

Think about it. What would happen if KSU had such a ratio of white to minority or male to female? We would be outraged. There would be protests, petitions, and calls for action. In a pluralistic society such as ours, educators should be as representative of the population as the students. While this country has made great strides and continues to work toward equal opportunity in areas such as race and gender, it has done nothing to politically diversify the faculties at colleges and universities. I don't know about you, but I want to understand issues from as many angles as possible so I can then make informed choices of my own.

10 Key Values of the Green Party

1. GRASSROOTS DEMOCRACY
2. SOCIAL JUSTICE AND EQUAL OPPORTUNITY
3. ECOLOGICAL WISDOM
4. NON-VIOLENCE
5. DECENTRALIZATION
6. COMMUNITY-BASED ECONOMICS AND ECONOMIC JUSTICE
7. FEMINISM AND GENDER EQUITY
8. RESPECT FOR DIVERSITY
9. PERSONAL AND GLOBAL RESPONSIBILITY
10. FUTURE FOCUS AND SUSTAINABILITY

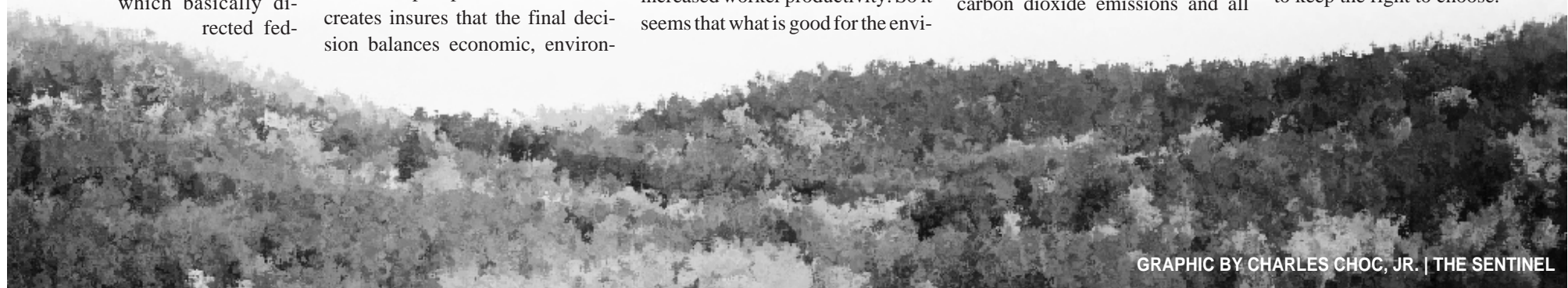
<http://www.gp.org/tenkey.html>

want to reverse Bush's easing of the Clean Air Act.

Howard Dean, Joseph Lieberman, and John Kerry all share an energy platform that would mandate generating 20% of the country's electricity from renewable resources by 2020. Such a program would have far-reaching positive repercussions. A strong national renewable energy infrastructure would create a multitude of jobs and help wean the country off foreign oil, giving a boost to the economy and increasing national security.

Environmental policy will not take center stage in November. Nevertheless, it remains a pertinent issue that impacts every individual in a personal way. The last presidential election was decided by a very small number of votes (five Supreme Court justices), and the environmental issues could pull swing voters either way. Regulations such as NEPA help ensure that future generations will still have resources and a healthy place to live. Contrary to what some believe, you don't have to choose between a healthful environment and a healthy economy, but you do have to keep the right to choose.

ronment is also good for the economy. In November, Bush will have to attempt to defend his track record; all Democratic candidates favor mandatory programs to cut carbon dioxide emissions and all



GRAPHIC BY CHARLES CHOC, JR. | THE SENTINEL

THE SENTINEL STAFF

FIRST PLACE, Most Improved, GCPA, Senior A Level, 2000, Georgia College Press Association
FIRST PLACE, General Photography, 2001 | SECOND PLACE, Layout and Design, 2001 | FIRST PLACE, Daniel Yarnado, Best Photo-News, 2001
FIRST PLACE, General Excellence, GCPA, Senior A Level, 1998
BEST OF SHOW, FIRST PLACE, 4 Year Non-daily Broadsheet Newspaper, ACP/CMA, 1994 BEST ALL-AROUND NON-DAILY NEWSPAPER, 3rd place, Region 3, Society of Professional Journalists, 1996

Production Manager OPEN
Copy Editors JANET OJEDA, MEREDITH PRUDEN
Advertising/Office Manager PAUL BENTON/MIKKI HALL
Production Assistants CHARLES CHOC JR., STEPHANIE DEWITT
Web Administrator TOBIAS QUOSIGK, ALEX DANAILA
Distribution PAUL BENTON
Adviser ED BONZA

LETTER POLICY & ADDRESSES

The Sentinel will try to print all letters received. Letters should be 200-300 words long. The writer must include full name, professional title if a Kennesaw State University employee, Georgia resident or year and major if a student. A phone number is required with all letters sent. The Sentinel reserves the right to edit letters. The Sentinel will not withhold names under any circumstances. Anonymously submitted letters will not be published. All comments and opinions in signed columns are those of the author and not necessarily of The Sentinel staff, its advisers or KSU and do not reflect the views of the faculty, staff, student body, the Board of Publications or the Board of Regents of the University System of Georgia. Columns are opinions of only the columnist. They do not reflect the views of The Sentinel, but instead offer a differing viewpoint.

Please address all correspondence to:
The Sentinel, Bldg 5, Rm 277, 1000 Chastain Road, Kennesaw, GA 30144-5591.
Phone: 770-423-6278, 423-6470 - FAX 770-423-6703.
E-mail: sentinel@students.kennesaw.edu. World Wide Web: www.ksusentinel.com
The Sentinel is the student newspaper of Kennesaw State University, and is partially funded through student activity funds. Questions about billing, display ads or classified ads should be directed to 770-423-6470 before 5 pm. Editorial questions should be directed to the editor in chief, 770-423-6278.
The Sentinel is published weekly during the school year and bi-weekly through summer.
First three copies are free; additional copies are \$1.00.
No part of The Sentinel may be reproduced without the express written permission of the editor in chief.

© 2004, THE SENTINEL. ALL RIGHTS RESERVED.

Response to "Democratic Demise"

Dear Editor,

While I must admit that most politicians give me a chuckle as well, I had an all out laugh while reading Tony's article on the "Democratic Demise."

He states the "current Democratic leadership consists of socialists whose outrageous comments and behavior make Howard Stern seem tame." Wow. Does he realize that the President has posed the question, "Is our children learning?" during campaign speeches? We also cannot forget this is the same President whose explanation of the difference between The Episcopal and Methodist churches was "We don't have as much kneeling. I'm sure there are some heavy doctrinal differences as well, which I'm not sophisticated enough to explain." (Quotes courtesy of irregulartimes.com) What about his admitting to drunk driving and cocaine use? Outrageous? Absolutely! Then you have his politics of sending our troops somewhere they don't belong and the business of sending our economy straight into the toilet. It could maybe be considered outrageous that during a major recession Bush thinks there should be mas-

sive tax cuts (that didn't work), or gee golly whiz, Bush's support to ban gay marriages as well as a woman's right to choose on the abortion issue. Who is calling who outrageous here?

Tony goes on to attack Howard Dean, stating that he believes tax cuts are bad. Maybe he should have done some more research. Dean doesn't think all tax cuts are bad, just massive tax cuts for the upper class during a recession.

Tony states that the "Dems" have shown a general disregard for what the majority of Americans believe. Well, I must be in the minority, because I believe in a free-market with a strong economy, good leadership, and the right to make decisions about my health and happiness. The republicans sure aren't listening to *ME* when I tell them that's what *I* want. Float a little to the left, Tony. The air is a little less righteous there...seems like you could use it.

Ginny Newton
Senior, Sociology Major

CONTACT US! e-mail: sentinel@students.kennesaw.edu • **via the web:** www.ksusentinel.com • **in person:** room 277 of the Student Center

Critics Corner

To see the end of the world
• go to page 6.



Features & entertainment

New crossword puzzle
• on page 7.



www.ksusentinel.com

Roaming Reporter

KSU speaks out



- Amanda Rutcen
- Sports Management
- Freshman
- Marietta

I did not get a call, like all my other friends, to inform me of my MMR form, so I got late registration.



- Stephen Touse
- Computer Science
- Junior
- Marietta

The state of information technology on campus is very poor. Online registration is fraught with problems, very limited searching and a sub-standard interface, among others. Sadly, I don't have room for a full rant.



- Kerry Luczaj
- Early Childhood Education
- Junior
- Marietta

Parking is very bad.



- Sam Wilburn
- Psychology
- Sophomore
- Marietta

No football team.



- Mahsa Masoudi
- English
- Sophomore
- Marietta

Construction is absolutely terrible at KSU. The temporary detours are even more bothersome. There are many cars going around and around campus trying to find parking spots and traffic is bad enough, so all the obtrusive speed bumps are not necessary. All the good spots are gone, but there are always spots by Waffle House. honestly though, who wants to park there? No one!

Remembering a friend

Editor's note:

Freshmen Joseph Hawley approached *The Sentinel* staff last Thursday to inform us of a friend's death, undeclared freshman Aaron Larson. Hawley volunteered to write a few words about his friend.

Joe Hawley
Guest Commentary

Aaron Larson has been the most honorable human being, I may ever meet in my life. He has been the greatest loss in my life to date as well. Aaron adored every aspect of humanity and his immeasurable humility was that of a Godsend. He had no idea his life would serve as such a turning point in so many lives. Aaron made an everlasting impression of decency, morality, spirituality, love, kindness, compassion, dignity and nobility on every single person with whom he made eye contact. Aaron had those eyes, angelic almost.

Aaron and I would speak about God. He wanted to become a minister after college. Girls, he finally got the phone number he wanted in Freshman Seminar on Tuesday (way to go buddy), and my favorite topic of conversation, our wonderful childhoods.

Strong families build strong children, and Aaron exemplified this. Aaron left me Tuesday evening so he could go spend time with his family. These types of things were not typical with all of my friends, but Aaron was different.

On Wednesday, I left Aaron so he could hang out with the girl he liked from a class. Aaron told me he did not like girls who kiss on the first date. He called me later that evening, and we said we would see each other in the morning. Aaron passed on in an automobile accident Jan. 21. That is how quick it happened.

My right hand man is gone, and I still do not know what to do. Do not wait until tomorrow. Be here now, it is all you have. Live to your fullest every second you have been granted, you are on a time limit. Aaron left me on Wednesday, and I am still waiting for him. He will never leave my phone, because I will be waiting for him.

Aaron was 19-years-old, and graduated from Harrison High School in 2002. This was his first semester at KSU. He will forever be remembered in the thoughts and prayers of everyone he touched. I love you buddy. I will try harder in English so I can write you a better homage. I love you buddy. Thank You. You are a gift from God. I love you Aaron.

~ Understand that as the mighty wind, blowing everywhere, rests always in the sky, all beings rest in Me. ~ Bhagavad Gita



Clockwise: Aaron Larson (right) with his brother Brandon (left). Aaron takes his dirt bike out for a spin, Aaron enjoying a dip. Photos courtesy Joe Hawley.

A real-life hero tells all

Herman Boone's visit to KSU

Erika Busby
News Editor

KSU was very lucky to have one of the best motivational speakers visit campus. The university was closed in honor of Martin Luther King, Jr.'s 75th birthday, however a passerby would have never known while strolling by the Stillwell Theater. The seats were filled and some of the local media were present to enjoy the inspirational words of Herman Boone. He was invited by the African American Student Alliance to speak at KSU.

Boone is the former head football coach of the T.C. Williams High School in Alexandria, Virginia. He is legendary for his accomplishments of bringing rival football players together and making them a championship team. In fact, his accomplishments inspired the making of *Remember the Titans* with Denzel Washington portraying him.

Boone was hired as an assistant football coach at T. C. Williams in 1969 after the school where he was coaching decided they "were not ready for a black football coach." T. C. Williams was totally integrated in 1971, and Boone became the head coach of the Titans' football team.

He took that team, African-American and Caucasian members, and made them work together. He not only brought the football team together, he brought the whole town of Alexandria together. This was a major accomplishment considering the amount of civil unrest occurring in the United States at that time.

"Dr. King truly believes that all communities must enter into a covenant that we shall build a society in which all people: black people, white people, Native Americans, Christians, Muslims and Jews alike, will be able to walk tall without fear in their hearts."

Boone explained his trials and tribulations, and those that people face today, and related them to Dr. King's message.

Boone began his speech by remembering the tragic events of Sept. 11, 2001. He asked the audience: "Who is it among us here this morning who can not forget the ash-covered fire-fighters as they offered a hand of suffer to strangers in New York, stumbling in the rubble-strewn streets that morning. I asked you that because I was there."

On his way to deliver one of his remarkable speeches that day in New York City, Boone ran an errand for a friend.



ERIKA BUSBY | THE SENTINEL

Boone is the former head football coach of the T.C. Williams High School.

"That morning I saw people: not black people, not white people, not Native Americans, not Asians," Boone said. "I saw people badly in need of help."

As his presentation progressed, he related what happened on Sept. 11, 2001 to what Dr. King had preached

so many years ago.

Boone showed everyone on Dr. King's birthday that people helping people, no matter what ethnic background they came from, "was part of Dr. King's dream, service to mankind," Boone said.

The ultimate parking spot

Heather Croas
Features Editor

I have found the ultimate parking spot. It is in Gary, Indiana. To be honest, I was surprised to discover that there really was a Gary, Indiana. Wondering how I came upon such a choice parking spot? Granted I doubt my car is still there. It happened three years ago, when I was trying to merge on to the interstate and hit a patch of "black ice."

I freaked out when the car started to swerve and was scared oncoming traffic would hit me so I slammed on the brakes. Rule number one when driving on ice, I have since been told, never slam the brakes when you hit a patch of ice. It causes the car to spin out of control. The next thing I knew my car was headed straight into the side of an 18-wheeler.

As this occurred, I remember thinking two things: "Oh **it I'm going to die" and "Oh **it Dad is going to kill me." I do not actually remember hitting the side of the truck, but apparently the car ricocheted off and went through the guardrail on the side of the road. What little I remember of the events is probably as big a blessing as the fact that I walked away with only a few bumps and bruises and a separated shoulder.

This accident was the most serious I have had behind the wheel of a car, and there is no good reason why I should have survived, but I did. It has provided me with

a new perspective on life, and the parking situation on campus.

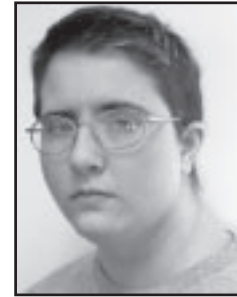
Life is too short to spend it arguing over parking spaces or having to walk too far. Trust me, without a car, walking is the best way I know to get around. It does irritate me that I have to pay \$70 a semester for parking, and I have not had a car for the last three years. What irritates me more are some of the stupid things people do in cars.

For example, speeding through the parking decks or around campus in general. There are speed limits for a reason, and hitting pedestrians is not a sport. Bad parking jobs, I mean really bad parking jobs, the little white lines on the ground are not there as guidelines. Parked cars are supposed to be placed in between them.

I have a challenge for anyone brave enough to accept it. Last semester we offered prizes to anyone who provided us with pictures of improperly parked cars. We are back.

Over the next three weeks I want everyone to go out and take photos of badly parked cars. We will choose the top three photos to run in the paper. That is not all, each of the winners will also receive a copy of MTV's *Punk'd Season 1*. E-mail the pictures to hnc1140@students.kennesaw.edu, or drop them off in The Sentinel office, room 227 in the student center.

BIRD'S EYE VIEW



Heather Croas
Features Editor

Tauheedah Hasan
Staff Writer

campus shorts

Jan. 21-Feb. 26 The KSU School of the Arts hosts the second Rodolfo Morales Exhibition. The collages displayed are by Rodolfo Morales, and they are from the Collection of Nancy Mayagoitia. Gallery Hours are Monday-Thursday 11 a.m. to 3 p.m. & Wednesday and Thursday 7 p.m. to 9 p.m. For more information, call 770-499-3223.

Jan. 29 ABL is setting up a Coffee House in the Leadership

Room above the cafeteria. All faculty, staff and students are invited to attend. There will be an open microphone, so everyone who attends will be able to share his or her talents. The coffee house is from 1 p.m. to 4 p.m. and refreshments will be provided.

Jan. 30-31 "Southern Order of Storytellers 22nd Annual Winter Storytelling Festival" takes place at the KSU Center. Admission prices range from \$2-\$25. This event will kick off on Friday, Jan. 30 at 1:30 p.m. The featured

Storyteller is Gayle Ross, a descendant of John Ross, the Principal Chief of the Cherokee Nation.

For more information visit www.SouthernOrderOfStorytellers.com, contact soswscmt@aol.com or call 770-587-2735.

Jan. 31 The 4th Annual Black Alumni Society's Scholarship Gala to raise money for the Wilkes/Burnett Black Alumni Society Scholarship.

The event begins at 7 p.m. in the student center University

Rooms A-C.

For more information contact Rosalyn King at rking@kennesaw.edu or call 770-499-3484.

Feb. 2 The Atlanta Chamber Players performs at 8 p.m. in the Stillwell Theater.

Tickets are \$5 for students and \$10 for general admission.

For more information go to the Box Office, located in the J.M Wilson building next to Stillwell Theater, or call 770-423-6650.

Coming February 2004, every Kennesaw State University student will receive a new KSU card, the KSU Debit Card



What you need to do: Your new KSU Debit Card will be sent to the permanent mailing address you have on file with the university in the month of February. There are two items that require your immediate attention when you receive your new KSU Debit Card:

1. Activate the card within 2 business days of receiving it

Go to www.KSUOne.com and follow the simple instructions to activate your card.

Activation will take 2-3 minutes. Although the new card has the MasterCard logo on it, **IT IS NOT A CREDIT CARD.**

2. Choose how you want to receive your money – pay attention to your choices

To receive a financial refund from KSU you must activate your card and choose how you wish to receive that refund. You have three options to choose from:

1. **Easy Refund!** A Direct Deposit to your OneAccount, (1 day or less)
2. **Electronic Funds Transfer** to another bank (3 or more business days)
3. **Paper Check** (5 or more business days)

Need more information?

Please visit www.KSUOne.com for more information about the KSU Debit Card.



OneAccount Services:
1-877-KSU-1110 (1-877-578-1110)
www.KSUOne.com



Critics Corner

Dear Dad, I think about you everyday

Luke Perry and Malcom-Jamal Warner star in *Jeremiah*

Heather Croas
Features Editor

Fifteen years ago the Big Death killed everyone over the age of puberty, leaving behind a world of chaos and a bunch of kids to fend for themselves. Jeremiah was one of those children. He has since been searching for information about his long-lost father and the place his father called the Valhalla Sector.

Along the way he meets Kurdy, another traveler just looking for a place to belong. When the two of them find themselves in Claresville, the sadistic leader Theo captures Jeremiah. While being held captive he meets Simon, who is from the "end of the world," a place believed to be a myth.

After escaping, Jeremiah and Kurdy return to Thunder Mountain to deliver a message from Simon who was shot and killed in the attempt. When they reach Thunder Mountain, they discover a highly structured, well-run organization with some of the comforts from the Old World: electricity, running water, plenty of food, civilization and it is run by a brilliant leader, Marcus Alexander.

Despite the reluctance felt on both sides, Jeremiah and Kurdy find themselves being brought into the fold. Jeremiah convinces



Marcus to use the resources of Thunder Mountain to help people on the outside while keeping their existence a secret.

As the journey progresses, they discover that the Valhalla Sector exists. It is being run by the military and someone is trying to prevent Jeremiah from finding it. They also discover that they are adults survivors from the Big Death, and the plague may return worse than before.

For those who enjoy science fiction drama, *Jeremiah* is a must-see experience. The show's tone is serious overall, but there is subtle humor that makes it enjoyable to watch. The interactions between Jeremiah and Kurdy are often similar to that of an old married couple, they get on each other's nerves

occasionally, but they genuinely care about one another.

The box-set allows viewers to sit down and watch the entire season at their own pace without having the weekly wait what happens next. The season ending cliffhanger leaves the viewer longing for the DVD release of Season 2.

While there are some special features, they are limited to a few deleted scenes found on the first disc. The problem with the deleted scenes is that they all run together, and there is no indication of which episode they came from.

It would have been nice for there to have been a few more extra features, possibly a documentary on the back story of *Jeremiah*, but it did not lessen the enjoyability of the DVD experience. Overall this is a must-own for fans of *Jeremiah* or the science fiction drama genre.

Grade: A-



DVD Review

What happens when a funny guy gets serious

Review of the *Butterfly Effect* with Ashton Kutcher and Amy Smart

Tauhedah Hasan
Staff Writer

MTV's personality Ashton Kutcher stars in the new thriller *The Butterfly Effect*. The title comes from the theory that all events have unforeseen consequences; a butterfly flaps its wings in North Dakota and a monsoon happens in Africa. Kutcher is known for his roles in the movies *Dude, Where's My Car* and *Just Married*. He is also known for the hit television series *Punked* and *That 70's Show*.

Kutcher's co-stars include Amy Smart (*Varsity Blues*) who plays his girlfriend Kayleigh, E l d e n Henderson (*She's All That*) and Eric Stoltz (*Jerry Maguire*). It is directed by Eric Bress and J. Mackye Gruber, who brought you *Final Destination 2*.

For his first dramatic role, Kutcher plays Evan Treborn, a 20-year-old college student whose childhood is filled with blackouts and bizarre incidents. Evan is told by his psychologist to keep journals on his memories.

Three years later, he finds his journal and when he reads what he wrote, he is projected back into the past. Evan has inherited the power of going back in time



and altering history.

He tries to save his girlfriend from her suicide, his besieged mother from cancer and his friends from the bad things that have happened in their lives. Evan's childhood is crammed with abuse that contributes to his mental state. Going back in time not only changes the past, it also affects the present.

When Evan wakes up from his blackouts he does not remember or recall what has occurred and his surroundings are different. Smart plays his girlfriend, who is a happy sorority girl with no worries, but the havoc that Evan prevented in the past has changed the present. Kayleigh (Smart) is now a drug addict that cannot get her life together.

Kutcher deserves credit for attempting to play a seri-

ous guy, but some people are just destined to be funny. Kutcher is one of those people. He had a few moments where you could see that he was genuine in his quest for acceptance, but then the *Punked* star came out and was not believable.

The storyline was enjoyable and the directors of this movie were trying to do something different. The movie could have been a potential hit if Matt Damon or Brad Pitt had played the main part.

Why should Kutcher veer away from the comedic roles that have made him who he is today? There was a possibility that he could have been a good dramatic actor, but based on *The Butterfly Effect* this is not the case. Smart, who plays two different characters in the movie, adds depth to this film. All Smart needed was a magnificent actor to co-star with and the film would be in the Golden Globe category.

Grade: C+



Movie Review

Reel News (Movies/DVD)

Eric M. Croas
Editor in Chief

Mindhunters (movie releases 01/23/04)

The film takes place on a remote island where the FBI has a training program for their psychological profiling division known as "Mindhunters." Their job is to profile and track serial killers.

There are seven trainees on the island, and it seems that one of them is a serial killer who is slowly killing off fellow agents. In a race against time and logic, the group must flex their skills to figure which one is the killer and stop them before it is too late.

The movie stars Val Kilmer, LL Cool J, Christian Slater and was directed by Renny Harlin.

Trivia:

• Even though Kilmer is reputed to be hard to work with, Roger Friedman reported on FOXNews.com that Renny Harlin said Kilmer is a changed man, because Harlin changed him.



Stargate SG-1: Season 5 (1/20)

The fifth season of this popular sci-fi show originally aired in 2001. The DVD set offers all 22 episodes, including the 100th episode spoof *Wormhole X-treme*. Extras provided with the box set include commentaries for every episode, three video diaries created specifically for the DVD, featurettes including *Inside the Tomb* and *Dr. Daniel Jackson - A Tribute* and a gallery of photo stills from the season.

Trivia:

• The SG-1 visual effects team (James Tichenor, Mark Breakspear, Adam de Bosch Kemper, Shannon Gurney, Robin Hackl, Kevin Little, Krista McLean, and Craig Van Den Biggelaar) won a Gemini (a Canadian award for television excellence) for the episode *Revelations*.
• Richard Dean Anderson (Colonel Jonathan "Jack" O'Neill and executive producer) originally wanted to be a professional hockey player, but that changed after he broke both of his arms in separate collisions.



Radio (1/27)

Cuba Gooding Jr. and Ed Harris star in this real life story about James Robert Kennedy a.k.a. Radio and Coach Harold Jones. Radio is a mentally-challenged and illiterate man from South Carolina whose heart and determination inspired a small southern town. The film explores the relationship between the two men that started in 1964 as Radio grew under the mentoring of Jones as an assistant for the high school team.

Trivia:

• James Robert "Radio" Kennedy still works at T.L. Hanna High School in Anderson, S.C., and in the 40 years that he has been there, he has been head cheerleader, assistant coach and team manager.



Thirteen (1/27)

This film shows a darker side of being a teenager, and it also takes on a subject not often discussed.

Tracy (played by Evan Rachel Wood) is an 'A' student, but she has a secret that nobody knows. To relieve her of the stress and pressures of life, Tracy cuts herself and always wears long sleeves to hide it.

If that is not dark enough, she lives with her single mother who is a recovering alcoholic, and Tracy also falls in with a bad group of kids. Even though Evie, played by Nikki Reed, takes Tracy under her wing like a sister and gushes over Tracy's mother, she proves to be manipulative and troublesome.

As the movie progresses, Tracy begins to spiral out of control and it will be up to her mother to rescue her. It is a powerful film, and the raw emotions that are tapped into by the cast will see leave viewers stunned.

Trivia:

• Not only did Hardwicke direct the film, she was a co-author of the script with actress Nikki Reed, who plays Evie. Reed was only 13-years-old when she started the screenplay.



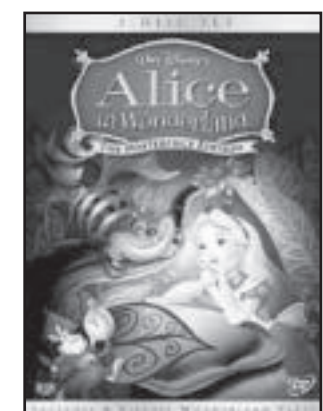
Alice in Wonderland (1/27)

The film was first released in 1951, but this adaptation of the 1865 novel by Lewis Carroll is still a family classic. It begins when Alice follows the white rabbit into a wonderland of her imagination. There she meets the Mad Hatter, the Chesire Cat, the Queen of Hearts and many more memorable characters.

Disney is releasing it as a remastered two-disc special edition, and it will have lots of extra materials including Virtual Wonderland Party activities, *Thru the Mirror* (an animated short with Mickey Mouse), "I'm Odd" a never before heard song, two Sing-Along songs, a set-top game, two featurettes *An Alice Comedy: Alice's Wonderland* and *Operation Wonderland*, the documentary *One Hour in Wonderland*, deleted materials and more.

Trivia:

• This was the first Disney animated film to have ending credits.



Papa John's Student and Staff Appreciation Day



Recieve 1 large 1-topping Pizza for \$7.00 by mention KSU Appreciation Day.

3rd Tuesday of everymonth starting 2/17/2004*

*This offer valid only at the Wade Green location.

770-919-2169

You think this column is funny, but it's not

Has anyone ever noticed their index finger size is in direct proportion to that of their nostrils? It is true. Have you ever seen a person incapable of jamming their finger up their nose to dig out a little morsel?

Even my one-year-old son, who has hands like oven mitts and nostrils like B.B. shots, can get his finger up his nose. Here are some more interesting facts about picking your nose.

According to Sciencedaily.com, nose picking is defined as the act of removing foreign matter or mucus from the nose with the finger, also called *rhinotillexomania*.

The Normal one



Leslie Thompson
Humor Columnist

Emedicine.com claims that 91% of adults pick their noses, although most do it in private. Nose picking usually stems from childhood habits most children did to annoy their mother. However, nose picking has been linked to habit disorders. (The subject specifically named no disorders.)

Intrigued, I have gone forth and made some observations of nose picking in general and those who do it. I have listed each style and the most dominant character traits of those who engage in the habit.

Delicate Dippers: A single well-manicured fingernail is gently inserted just inside the nostril; where upon whatever is lurking inside the threshold is removed.

Common traits: Delicate Dippers are often well-mannered and well-groomed individuals who would much rather pick their nose than be caught with a cliffhanger. These individuals are self-possessed and wear expressions of haughtiness. Beauty queens, the social elite and most anyone often employ this style on a date.

Gold Diggers: These individuals often insert their finger into the nostril to the first knuckle and rotate ensuring complete removal of sinus matter.

Common traits: These individuals are a

determined lot. Expressions of intense concentration cover the face while their posture is hunched and aggressive. This style is commonly used by professional types and perfectionists.

Searching For My Brain: The individual's finger is inserted into the nostril to the second knuckle. The hand moves back and forth in a scratching motion as if the picker is searching for something important.

Common traits: These individuals possess an air of relaxed contemplation. Their expression is slack and their posture is one that sprawls over furniture. Those who use illegal substances excessively and those who do not get enough sleep employ this style.

Flickers: Removal of matter from nose can range from the "Digger" to the "Dipper." It is the flick of finger against thumb that defines this particular style of picking.

Common traits: The individual possesses expressions of either complete oblivion or of intense rage. In the case of oblivion, the flicker is often engaged in some other activity while picking and is simply removing the booger.

In the case of the enraged, the picker is often driving and has a large mass of mucus prepared as a weapon. Posture varies from relaxed to stiff, but the arm is always held away from the body.

Those who are studious and/or susceptible to road rage most often employ this style. Oblivious flickers are benign and difficult to spot. Angry flickers employ an "If you tailgate me I'll flick a booger on your windshield" bumper sticker.

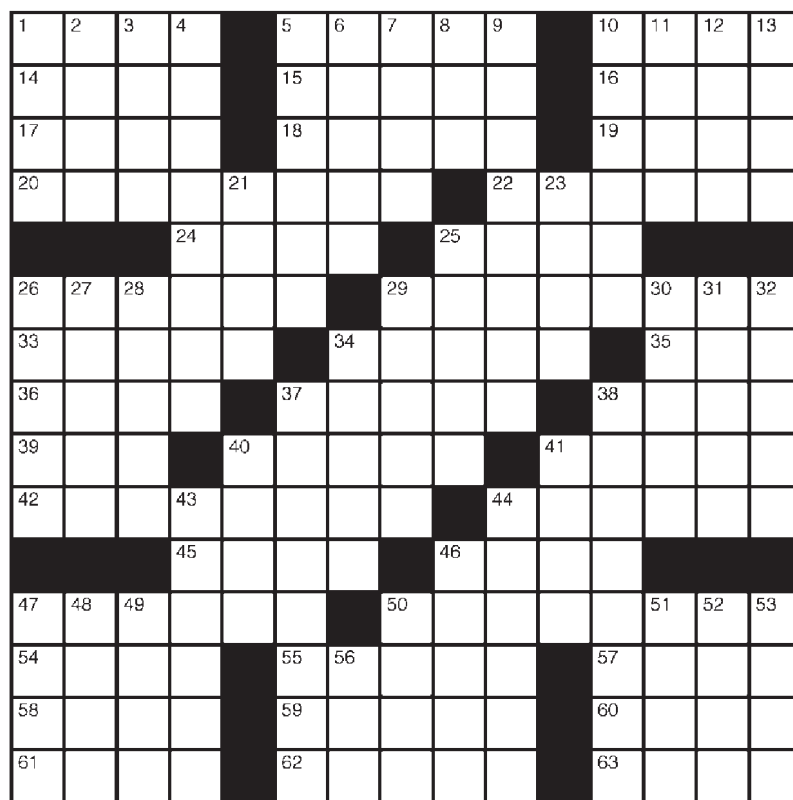
Liars: Deny, deny, deny.

Common traits: These individuals have clean hands and faces. Their complexions are clear and their nasal passages are in a state of general well-being. These individuals wear expressions of disgust and their postures demonstrate contempt. Individuals who claim they have never picked their nose most often employ this style. They are also known as "Belchers," "Farters" and "The Smelly Guy."

Editor's note: To those who are considering taking this seriously: It should be noted that this article is mostly based on casual observations made by the writer and, should in no way be regarded as anything scientific, observant or in the least bit intelligent.

Crossword

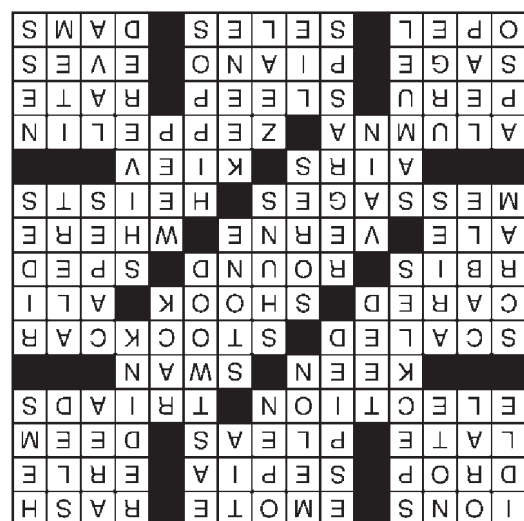
- ACROSS
- Charged particles
 - Ham it up
 - Impulsive
 - Plummet
 - Brown pigment
 - Agatha's contemporary
 - Past due
 - Legal arguments
 - Judge
 - November event
 - Musical chords
 - Sharp
 - Adult Ugly Ducking
 - Climbed
 - Richard Petty vehicle
 - Felt concern
 - Quivered
 - "Float like a butterfly" boxer
 - Batters' stats
 - Circular
 - Risked a ticket
 - Pub order
 - Writer Jules
 - In what place?
 - Answering-machine backlog
 - Robberies
 - Broadcasts
 - Ukraine capital
 - Woman grad
 - Led
 - Llama land
 - Snooze
 - Unit cost
 - Wise guy
 - Elton John's instrument
 - Nights before
 - Autobahn auto
 - Monica of tennis
 - Aswan and Hoover
- DOWN
- At rest
 - Spoken
 - Post-it jotting
 - Foliage spots
 - Saw
 - Honeydew or casaba
 - Candid
 - Acapulco aunt
 - "Unforgiven" star Clint
 - Debit, in business lingo
 - Location
 - Winter coaster
 - Skirt edges
 - Set up for a drive
 - Set of antlers
 - Sharon of "Basic Instinct"
 - Vamoose!
 - TV line
 - Zodiac sign
 - Deliberately avoids
 - Canaveral and Hatteras
 - Heads-up
 - Commutes
 - Painful places
 - Gets hold of again
 - Reacted to cold, perhaps
 - "You're So ___" (Simon song)



© 2004 Tribune Media Services, Inc. All rights reserved.

01/31/04

Solutions



- Cry
- Morse or Colt
- River horses
- New Hampshire city
- Lhasa
- Bound forward
- Encourage
- Enthusiasm
- Vesuvian flow
- List element
- Loch of legend
- Golf ball position



KSU FOUNDATION TRUSTEES YOU SHOULD KNOW



Name: Ronald H. Francis
Hometown: Ft. Lauderdale, Florida
Trustee Job: Executive Committee member
Real Job: President & CEO Charter Bank & Trust

Did you know? Trustee Francis is a friend of the late Chicago Bears player Brian Piccolo. They played high school football together.

Graduate of: Eckerd College (BA) and Georgia State University (MBA)

Favorite Book: "I enjoy a great variety of books, but I especially like mystery/suspense authors like James Patterson and John Grisham."

Favorite Place: Great golf courses or beaches...here and around the world

Favorite Food: "I enjoy gourmet dining."

American Idol: "I have great respect for many leaders both living and not, but it is difficult to pick just one."

Passions: Travel, golf, fine wines

Most proud of: Leading two de novo (new) banks in Cobb County since 1983 and seeing the positive impact these banks and their team members have had on our community.

KENNESAW STATE UNIVERSITY FOUNDATION

"Tomorrow's Vision Today"

To contact the KSU Foundation: 770-423-6675

H & M Wireless

Offering all Kennesaw State Students up to \$100 in-store rebate and mail-in rebate off selected phones with 1 year activation.

(770) 795-9595

Authorized dealer for

T-Mobile

Sprint

MasterCard

NEXTEL

VISA

your one stop Wireless shop offering number portability, home service connection with no credit check or deposit and you can keep your current Bell South number

725 Ernest Barrett Pkway- Suite 630 -Kennesaw (next to Galvans')



SPORTS

“This team does not need motivation from last year; we are self-motivated”

~ Coach Whitlock on upcoming softball season

See “KSU Softball” below



2004 Hockey Schedule

2/5	&UGA	9:30p
2/13	@Tulane	TBD
2/14	@Tulane	TBD
3/20	#Middle Tenn. SU	9:30p

- Denotes at Ice Forum @ Town Center
* - Denotes at Ice Forum @ South Lake
& - Denotes at Gwinnett Civic Center



2004 Basketball Schedule

1/28	@Georgia State	5:30pm
1/31	Francis Marion	2:00pm
2/4	@Armstrong At.	5:30pm
2/7	@Lander	5:30pm
2/11	@Clayton State	5:30pm
2/14	North Florida	2:00pm
2/18	Columbus State	5:30pm
2/21	@UNC Pembroke	2:00pm
2/25	Clayton State	5:30pm
2/28	@North Florida	2:00pm

*Times denote women's games
*Men's games start 2 hours after women's times

gettoknow



Senior, Forward, **Reggie McKoy.** He had 27 rebounds against Augusta State on Sat., Jan. 24th.



gotnews?

If you have a story idea or are interested in joining **The Sentinel** sports

staff, call editor Matt Cutrona at 770-423-6278 or e-mail him at mwc6973@students.kennesaw.edu

KSU Softball on the prowl

Owls looking for redemption after questionable season end

Nathan McCreary
Senior Staff Writer

KSU's softball team is preparing for the 2004 season and a chance to redeem last year's snubbing by the NCAA South-Atlantic Region, who abruptly ended KSU's 2003 campaign.

On April 20, 2003, the KSU Owl's (35-11) were ranked 15th in the nation and had finished runner-up in the Peach Belt Championship losing out to North Florida. The Owls had the top softball player in the south, and maybe the nation, in freshman Janet Kearns, who in 16 starts finished with 12 complete games and a 1.54 ERA.

Kearns got the attention of the NCAA softball world, as she threw a perfect game in her first collegiate game to open the 2003 season against Tennessee-Wesleyan. The Owls also had power-hitter Cambria McKay, who led the Owls in home runs (16), runs batted in (53), slugging percentage (.803) and on-base percentage (.506).

On May 6, 2003, the South Atlantic Region selected six teams to participate in the NCAA tournament and KSU was not one of them. The South-Atlantic Region selected North Florida, Georgia College and State University, Columbus State, Armstrong Atlantic, Wingate and Longwood to represent the region.

Columbus State and Armstrong Atlantic both share the Peach Belt Conference with KSU; however, they finished behind the Owls in the PBC rankings. In head-to-head games, the Owls' won two of three against Columbus State and Armstrong Atlantic.

The feeling among KSU's athletic department, coaching staff, players and fans was sick confusion. The Owls' season was over and they would not get a chance to bring a championship

back to KSU.

Jan. 23, 2004, KSU's Softball Head Coach Scott Whitlock is running drills and intense practices with his team in preparation for the new season. Whitlock has not forgotten what happened last year.

"We will never forget what happened last year," Whitlock said, "but we are not using it as motivation. This team does not need motivation from last year; we are self motivated. Last year will always remind us that there are no guarantees, and we did not



Richard L. Johnson | THE SENTINEL
Janet Kearns sustained a 1.54 ERA last season and 12 complete games.

do what it took to get it done."

In 2003, the Owls freshmen were the driving force behind the 35-11 season. This year, KSU has three more freshmen that will contribute throughout the season, Jennifer Nolan, Kelly Cowart and Keri McKee.

Nolan is an infielder from Woodstock High School, where she was voted Most Valuable Player her freshman, junior and senior years. She was chosen to the All-Cherokee County Team in each of her four prep seasons and was also selected as the Atlanta Journal Constitution's Offensive Player of the Year.

Cowart will play in the out-

field and pitch for the Owls. She was a 2002 First Team All-State selection, and she was a member of the 2002 North Georgia High School All Star Team. In 2002, Cowart was a Scholar Athlete Award winner.

McKee comes to KSU from North Gwinnett High School and will play in the infield. McKee's was recognized as the Gwinnett County Player of the Year in 2000, a Second Team All-State selection in 2000 and was named North Gwinnett High School's MVP in 2000. In 2001, she was selected to First Team All-County, voted to the second team All-State and chosen as team MVP in 2001.

McKee was named a First Team All-County selection in 2000 and was a Second Team All-State pick and was named high school MVP in 2002. McKee finished her prep career with a .381 batting average and held the county record for career singles, doubles, triples and RBI's for Gwinnett County. Whitlock specifically named these three freshmen as players to watch for in 2004.

The Owl's returning key players in 2004 include pitchers Kearns and Lisa Macki, catcher McKay, outfielder Amy Middleton and infielder Lisa Lamb.

The Owls also return to KSU's campus to play home games at the new Bobbie Bailey Athletic Complex. "This place has not sunk in yet," Whitlock said. "It exceeds anything I could have imagined."

Whitlock wanted his players to understand who owns the complex in his eyes, "The alumni game is coming up in a couple of weeks, which is appropriate...the players that played here 13-14 years ago built this complex," Whitlock said. "We are just using it."

KSU will officially open the new complex with the first game of the season on Saturday, Feb. 7 against Tusculum.



Richard L. Johnson | THE SENTINEL

Junior Tommy Thompson brings the ball down court to set up a play.

"A force to be reckoned with"

Joseph Dollar
Senior Staff Writer

The men's basketball team dominated Armstrong Atlantic State University 76-61, Jan. 21, at the Spec Landrum Center, but the score was not indicative of the real outcome of the match.

Head coach Tony Ingle had pulled his main players with a 27-point lead earlier in the game. AASU then hit three shots from behind the arch, which narrowed the margin of victory for KSU.

The message that Ingle believes his team is sending to the rest of the Peach Belt Conference is that they are a "force to be reckoned with."

There were many respectable efforts on the Owl's team that night. Perhaps the most noted was senior forward Reggie McKoy. McKoy collected 22 rebounds and 14 points against AASU. "I came out in the second half with more intensity," McKoy said. "They are known for being a good second half team."

Senior guard Terrence Hill said, "That is the best rebounding performance I have ever seen."

Hill showed his professional attitude by playing while sick. He had not practiced all

week due to illness, but was able to play 31 minutes and score 19 points. "I was just trying to get my teammates involved mostly," Hill said.

The game seemed to be a good match up during the first half, when the Pirates were able to hold the Owls to 29 points. The score was 29-20 at the half.

Tobias Seldon started the second half for the ailing Hill. Ingle was very impressed with the spark that Seldon provided for his team. "He was like a jack-in-the-box for us," Ingle said.

Seldon finished the game with seven points, three rebounds, two assists, two steals and most importantly 21 crucial minutes played.

"Once Seldon gets on a roll he is hard to stop," McKoy said.

That was characteristic of the whole KSU team Wednesday night. They started to cruise and never let off the gas pedal until the game was won. Ingle describes his team as having a "stifling" defense. They nabbed 13 steals, while preventing the Pirates from getting a clear shot at the basket most of the night.

Ingle feels the team has really developed some great chemistry. The wins his team has accumulated over the last couple of weeks seem to back up his theory.

Injuries in the nest lead to losses in tournament

The Gulf Coast Clash does not go well for Owl's hockey.

Richard L. Johnson
Assistant Photo Editor

The Owls ran into trouble at the 2004 Gulf Coast Clash, when they lost two of their three games to finish fifth in the tournament.

In the opening game against the University of Central Florida, the Owls were defeated 5-1. Bret Gibout scored KSU's only goal.

The second game against Florida Gulf Coast University ended in a 7-2 loss. Brian Wickstrom, the Owls points leader, scored both goals.

In the final game against

Embry-Riddle Aeronautical University, the Owls ended a four game losing streak with an 11-3 score to win. Wickstrom posted four goals. Gibout, Bryan Griggs and Robert Farris added two each and Ryan Falvai added one to put this game away.

The Owls continue to be plagued by injuries. Dave Kudlats injured his right elbow and required eight stitches to close the wound. Kudlats is a vital component of the Owls defense and was unable to play in the remainder of the tournament. Alain Farag, defenseman, remains sidelined by injuries in-

curred in the Wagner game.

"Bottom line, injuries are killing us," said head coach Craig MacDonald.

In both losses, the Owls played two strong periods but appeared worn down in the third. While the team has depth of talent, losing two players forces other players to play longer.

Coach MacDonald remains optimistic about the future of the Owls hockey program. "Lots of effort. We continue to build the hockey program through events such as this," said MacDonald about the Gulf Coast Clash.



Richard L. Johnson | THE SENTINEL

The Owls hockey season is slowly slipping away.

Feb 5

Compiled by Chris Lerstang
Senior Staff Writer

Saturday, Jan. 31

No. 1 Duke at No. 13 Georgia Tech
5:00 PM

Alexander Memorial Coliseum
Atlanta, Georgia

The ACC is brutal this season, and no one knows that more than GeorgiaTech. They beat No. 7 Wake Forest last week but then lost to NC State. Now they have to take on the top team in the nation, Duke. The Yellow Jackets must get a hand in the face of guard J.J. Redick, who leads the Blue Devils with 16.1 PPG., or it will be a long night. Duke could be eyeing their next game at North Carolina and overlook a very athletic Tech team. This one needs to go in the upset special category. Expect GT to get the big win.

No. 8 Kentucky at No. 22 Vanderbilt
12:00 PM
Memorial Gym
Nashville, TN

The 'Dores of Vanderbilt got off to a hot start by winning their first

12 games but have struggled of late, losing three of their last four in the SEC. Forward Matt Freije, who averages 18.0 ppg, can score from down low and from the perimeter. UK will be playing its third game of the week and might not have the freshest of legs, but with guard Gerald Fitch hitting the outside "J" and Chuck Hayes cleaning the glass, the Wildcats will be too much. Expect UK to get a hard-fought victory.

Marquette at No. 6 Louisville
3:00 PM
Freedom Hall
Louisville, KY

After losing their opener, the Cardinals have ripped off 14 straight wins as of this writing and have beaten two top five teams in Kentucky and Cincinnati already. Rick Pitino does not really have a superstar, but he uses balanced scoring and tough defense to get his wins. Marquette is not as strong as it's been in the past and needs a big "W" to get back in the Conference USA race. It will not happen at Freedom Hall. Expect Louisville in a rout.

Francis Marion at Kennesaw State
4:00 PM
Spec Landrum Centre
Kennesaw, GA

Assuming both teams won on Wednesday, these teams will be

undefeated in the Peach Belt Conference and atop their respective divisions. The Owls can always count on Terrence Hill for scoring, but forward Reggie McKoy has taken his game into the stratosphere by averaging 24.5 rebounds in the last week. The Patriots have gotten off to their hot start by playing good, hard defense, leading the conference in most defensive categories. Should be one of the biggest games ever at the "Spec."

Monday, Feb. 2

No. 16 Syracuse at No. 4 Connecticut
7:00 PM
Gampel Pavilion
Storrs, CT

The Huskies will be happy to be back home after two straight Big East road games but will have their hands full with Syracuse. Emeka Okafor has emerged as the best player in the country, averaging a double-double for UConn: however, don't forget about Ben Gordon and his 17.7 ppg. The Orangemen counter with forward Hakim Warrick (19.8 ppg) who will have to battle down low to keep Okafor in check. UConn is at home and is just simply better. Expect the Huskies to roll.

Owls dominate Peach Belt

Men's basketball improves conference record to (6-0)

Joseph Dollar
Senior Staff Writer

Reggie McKoy grabbed 27 rebounds Saturday night to keep the Kennesaw State men's basketball perfect conference record in tact.

The 27 rebounds eclipsed the former team and conference record of 24. McKoy shrugged off his accomplishment saying, "It just means I got 27 rebounds."

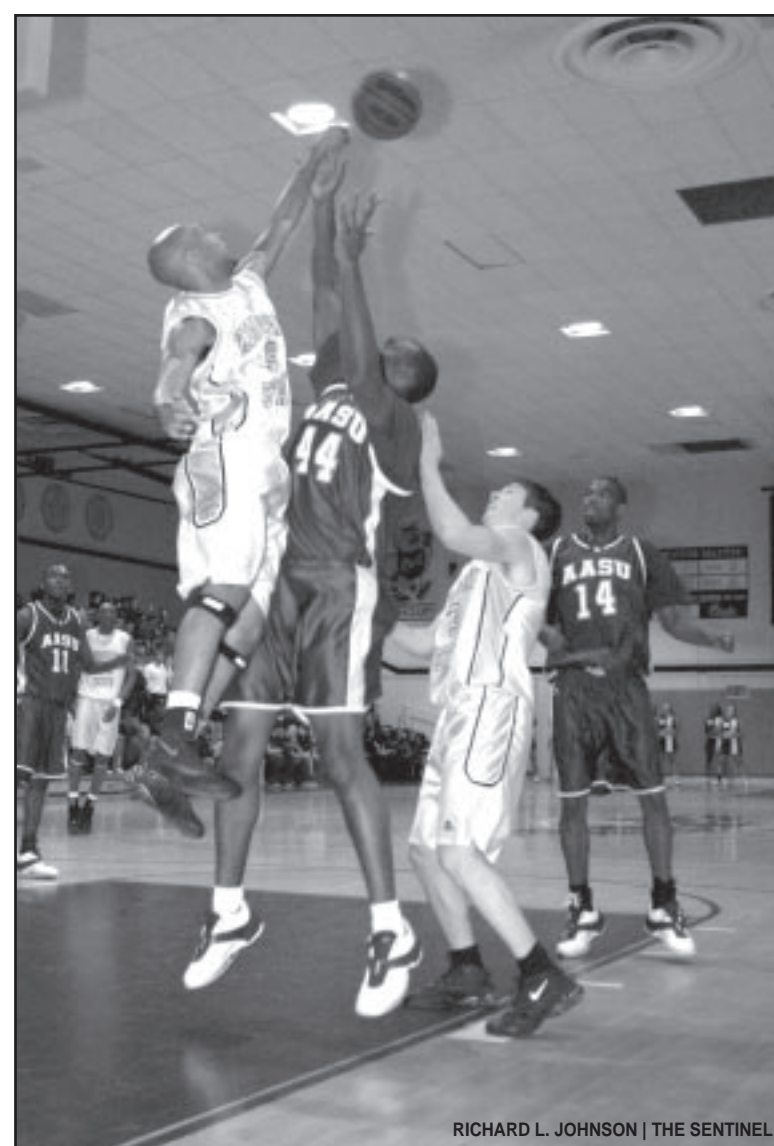
With the 77-45 win over the Augusta State Jaguars, KSU (16-4, 6-0) surpassed the team record for lowest points in a Peach Belt conference game. The previous record was 46.

Head Coach Tony Ingle attributes the point record to hard work on the defensive end of the floor. The Jaguars repeatedly tried to bait the Owls into a physical brand of basketball that would help deter their scoring output.

Junior swingman Rey Luque says that Ingle has a lot to do with KSU not straying from their game plan. "We work on that everyday in practice. Coach preaches to not bite into that type of play."

The Owls came out firing on all cylinders from the beginning of the game. They jumped out to a comfortable lead by imposing their will on both offense and defense. The Owls led 35-18 at halftime.

The second half was more of the same for both teams. KSU was



RICHARD L. JOHNSON | THE SENTINEL

Tobias Seldon elevates to make an incredible block.

able to stretch their lead by holding ASU to 30% shooting from the field for the game.

It was nice to see the score tell the story of the game. Normally the Owls get out to huge lead, and then let the opposing team creep back in towards the end of the game. "Coach emphasized putting two halves together," McKoy said. "We're gonna need that going into the (PBC) tournament."

While McKoy was the defensive leader, Luque was the offensive catalyst. He led the way with 24 points. "It seems that Rey

is always covered," said Ingle, "but is still able to get his shot off smoothly."

The Jaguars were called for three technical fouls in the match. Each time Ingle chose for Luque to go to the line for his team. "Coach really trusts me at the free throw line," Luque said. He was eight for eight from the line that night.

The Owls are in Milledgeville on Jan. 28, for a game against Georgia College and State University at 7:30 p.m.

TONY INGLE, FROM PAGE 1

he is the one leading the way. He is the one teaching them [the students] how to do it."

According to KSU athletics, the men's basketball team is currently 16-4, as of Jan. 27. They are 9-0 at home, 6-0 in conference and ranked number 1 in the South Division of the Peach Belt Conference. The team has strong, committed players and good fans. Ingle says they have a good thing going, but they are still missing one thing.

"We have been winning, the cheerleaders add a lot to the game, there is a lot of enthusiasm and we have a good pep band," Ingle said. "About the only thing lacking is a wild and crazy student section... [but] this is their university and if they want to be a part of that, it is definitely their decision."

The men's basketball team's home record goes to show fans are inspiring the team to win. The screaming, chanting and calling out the



Coach Ingle with the seniors (from left to right): #33-Justin Thompson, #24-Terrence Hill, #0-Reggie McKoy.

referees when a bad call is made makes Ingle's job much easier.

With the debut of *Courtside with Tony Ingle*, Ingle is bringing the game into the fans' homes. He says he is very excited about bringing the game to people who are unable to leave their homes.

"I believe the true leader is one who serves others," Ingle said. "This is a way we can serve our community by putting something out there for

them." Ingle is building a foundation to make KSU athletics more prominent, and lighting a path for other KSU athletic teams.

"The cake looks good," Ingle said. "We just have to light the candles."

Courtside with Tony Ingle is scheduled to air Fridays at 6:00 p.m. and Saturdays and Sundays at 2:00 p.m. on channel 23.

Circle of Honor induction to highlight softball alumni day

Press Release

On Saturday, January 31 at 11:00 AM, the KSU Softball Program will celebrate its annual Alumni Day and Games. On a day to both reminisce and look ahead, many of the stars from past teams will join current Owl players and coaches to kickoff the 2004 season.

This year's event will feature two very special additions to KSU's great softball tradition. First, the day will see three former Owl standouts inducted as the inaugural class into the **KSU Softball Circle of Honor**. Secondly, the day will be the first official event held at the new \$3.5 million **Bobbie Bailey Complex** and newly renovated **Owl Field**.

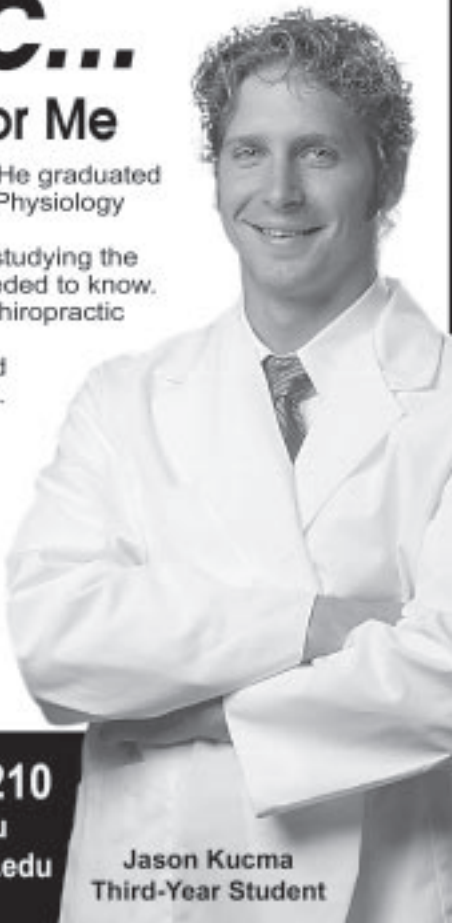
Chiropractic... The Choice For Me

Jason Kucma is a Third-year student from Medford, NJ. He graduated from Ithaca College with a Bachelor's Degree in Exercise Physiology concentrating in Cardiac Rehabilitation.

"The only thing that has ever captured my attention was studying the human body. The more I learned in school, the more I needed to know. The most logical step for me was to become a Doctor of Chiropractic so I could truly help people".

Before making his decision to attend Logan, Jason visited nearly half of the chiropractic colleges in the United States. "Logan is in the perfect location in a safe, residential area. The Admissions staff are very friendly and helpful and the faculty are excellent."

Logan College offers students an incredible learning environment blending a rigorous chiropractic program with diverse and active student population. If you are looking for a healthcare career that offers tremendous personal satisfaction, professional success and income commensurate with your position as a Doctor of Chiropractic, contact Logan College of Chiropractic today and explore your future.



Logan 1-800-533-9210
College of Chiropractic www.logan.edu
loganadm@logan.edu

1851 Schoettler Rd, Chesterfield, MO 63017

Jason Kucma
Third-Year Student

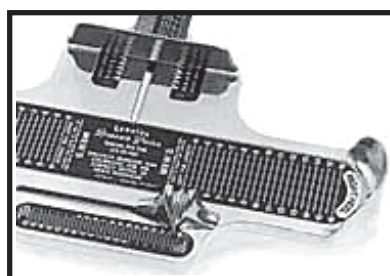
@touchresearch

nTouch Research and local physicians are currently recruiting volunteers for research studies.

You may be compensated up to **\$400** for your time and travel.

Call the professionals at nTouch Research.

1-800-RX-STUDY or 770-429-8828



See if The Sentinel newspaper fits you - 770-423-6278 or online at www.ksusentinel.com

100 Announcements

The Office of Student Financial Aid would like to announce the opening of the Scholarship Web Page for the 2004-2005 Academic Year. Scholarship applications and additional information regarding KSU scholarships is available at www.kennesaw.edu/scholarships/.

Camp Wannaklot, a camp for children with bleeding disorders, needs volunteers ages 18 or older to be camp counselors July 10-16, 2004. Call Vic at 770-518-8272 or 1-800-866-4366. (www.hog.org)

210 Apts/Lofts/Rooms

House for rent—2 miles from KSU; 3bedrooms, 2 baths, family room, living room, dining room, kitchen, breakfast, laundry, garage, covered deck. \$1,100.00 per month. Call Dave at 770-428-6296 or 770-653-1097.

2 apartments for rent. 3 miles from KSU. \$800 mo. 2 bedrooms, 2 full baths, kitchen, diningroom, and livingroom with fireplace. Non-smokers. \$600 mo, 1 bedroom, full bath, livingroom, kitchen. Non-smokers. (770) 974-6830

Fully furnished apt for rent, 9 miles S of Kennesaw State U. E Cobb Co in a private home. Bedroom, living room, bathroom, shared laundry room, new kitchen, new carpet. Private entrance and indoor parking. All utilities included except phone. Cable TV w 150 channels. Ideal for 1 person. No pets or smokers. Short term or long term available. Call T.O. or Celeste at 770-971-8328.

One Bedroom House For Rent All Utilities included!!! Large bedroom with walk-in closet Kitchen with refrigerator, range, washer & dryer Large living room and bathroom Private address, driveway, and fenced backyard with deck New central air conditioner w/ Heat Management maintained yard Private Residential Neighborhood IMMACULATELY CLEAN - FRESHLY PAINTED!!! All Utilities included!!! \$600 per month \$500 security deposit in Woodstock, 10 minutes from KSU. Call Jonathan Holland @ 770.575.1928

For Rent: Fully furnished new apt. w/ full bath and kitchenette in daylight basement. Close to KSU. Private entrance. New sofas, carpet, microwave, stove and refrigerator. \$500 a month, includes cable & all utilities except telephone. Female student. Month-to-month with deposit. No smoking. No pets. Contact karenmurph@bellsouth.net or 770-527-8210.

220 Roommates

M/F Roommate Wanted to share 2 BR 2 BA townhouse. Wonderful location 4 min. to I-75 near the 120 loop. \$325/mo. + 1/2 util. Call Ryan at 770-572-1069.

SPACIOUS 3 BED 2.5 BATH IN UPPER SCALE COMMUNITY LOOKING FOR 3(KSU) TO SHARES TOWNHOUSE POOL, TENNIS, PATIO, CONVENIENT LOCATION 5 MIN. TO I-575 & TOWNE LAKE PKWY & 6.8 MILES TO KSU SO GET 3 TO GO AND CALL SALLY OR ANTHONY == 770-928-3882====RENT==410.00==== MUST BE 3 PERSONS THAT'S YOU AND TWO MORE

Room for rent, bathroom and utilities included, only \$450. 2 miles away from KSU campus. For information call Antoinette (678) 768 4000

NO LEASE, NO DEPOSIT, FREE UTILITIES. Furn room w/cable & sep phone line in decorated home 5 mi from KSU. FOREIGN STUDENTS ESPECIALLY WELCOME. \$330. 404-625-9355

Female roommate wanted to share downtown Woodstock home with female grad student/professional. Your own connected bathroom/bedroom, high-speed Internet, inground pool. \$400/month + 1/2 utilities. Call (678) 923-6232 or e-mail angelaatl@fastmail.fm.

HOUSEMATE MATCH is a 17 year old nonprofit, nonsectarian shared housing program sponsored by the Marcus Jewish Community Center of Atlanta. HOUSEMATE MATCH links adults seeking affordable, low cost housing with independent seniors who provide extra space in their homes/apartments and prefer to remain in their home as long as possible. Housemate Match is a United Way funded program. Contact Lynne Dyckman, Housing Counselor Cobb County at 770/578-7526.

NO ONE READS SENTINEL ADS? You just did! Place your own at: www.ksusentinelclassifieds.com

230 Real Estate For sale

1940s Bungalow In Mint Condition On Pretty Lot Near Marietta Square. 2/1, Fenced Yard, Deck, Pond + Outbuilding with Shop & Office. Period Details & Modern Systems. Hardwood Floors & Fireplace. Stove, Microwave & New Dishwasher Stay. Worry Free with Home Warranty. Offered at \$194,900.00. For More Info, Contact Jim Renehan of Metro Brokers at 678-587-7952.

CONDO FOR SALE. Heathersett Park townhouse, 2 bed/ 1 1/2 bath in quiet complex close to Marietta Square and Dobbins. Private back yard, pool complex, large LR and bedrms. \$80,000 Coldwell Banker, Shelby Pedersen, 770-594-2019

Charming Townhome for Sale by Owner. 3 bedrooms/2 baths, spacious loft, kitchen w/breakfast area, vaulted living room w/gas fireplace. Located minutes from KSU, I-75/575, and Town Ctr Mall. Priced to sell at \$127,500. Call 770-312-4468 for more info.

310 For Sale

Bed - A bed, luxury Queen Pillowtop Set, New, in plastic, must sell, deliver. \$145. 404-438-4299

BED - A comfortable full size mattress set, new, can deliver, \$95. 404-438-4299

410 Childcare

Nannies Needed: Georgia's Dream Nannies, Inc. NOW HIRING Full or Part-time, Temporary, Live-in or out Nannies, and Personal Assistants. Can work around class schedule. Can earn up to \$300- \$600 + a week. VISIT www.gadreamnannies.com And fill out an application CONTACT: 770-380-5872.

Childcare: PT help needed to care for 3 year old approx 10 hrs/week. \$10 per hour in East Cobb home. References required. Non smoker. Please call Amy at 770-977-6839.

** PT NANNY ** for active 5 & 9yr old boys - FRIDAY ONLY (1p-7p) thru End of MAY, then FRI (9a-7p) for SUMMER - If your FUN, ENERGETIC & like to PLAY then this job is for you! - Must also be very RESPONSIBLE, DEPENDABLE & Non-Smoker w/ experience! - *GOOD PAY* for the right person - Good Kids - Other duties incl. cleaning children's areas & boys laundry - **START Date: Feb 6** - Valid References, Car & Good Driving Rec REQUIRED & CHECKED! - Must be willing to have Background checked - Canton, off Sixes Rd - Call SUE @ 678-494-4770 (Mon-Thur) after 11a

Childcare for 8 mth old in my home, 2-5 nights per week, Refs reqd, non-smkr, okay w/ pets. Kate 770-792-8625 start asap

Nanny needed for 5 year old girl and 8 month old boy. About 20 to 25 hours a week. Hours are flexible. Our home is in Acworth. Please contact Kim at (770)422-1688.

Part-time babysitter needed in Marietta. Thursdays/Fridays. Must provide transportation. Children ages 10 & 8. Times 2:30 - 7:00. End time is flexible. Pay is negotiable. Add'l times and days available. If interested please contact Lew or Heather 404-256-3830(W) or 678-627-0669(H).

PT Nanny Postion-Smyrna family needs an in-home loving caregiver to help with two small children. Would prefer Mon., Wed. & Fri help. Must have own car. Will be responsible for both kids and light household duties. Please call 678-784-4251 or email kh41@mindspring.com if interested.

Babysitter Needed for very fun family in Woodstock area. T/TH 4-8:30pm and Sat. during day. Great pay, more hours in summer if wanted. Non-smoker, own transportation, Background/criminal check and drug screen reqd. 678-445-9079.

PART-TIME NANNY NEEDED. I NEED A PART-TIME NANNY TO TAKE CARE OF MY THREE-MONTH OLD SON AT MY HOME IN KENNESAW- MARIETTA AREA ON TUESDAYS AND THURSDAYS FROM 8:30 A.M. TO 6:00 P.M. ADDITIONAL DAYS OR HOURS FROM TIME TO TIME. JOB SHARING IS AN OPTION. START IMMEDIATELY. CALL BETH AT 770-420-3858. REFERENCES APPRECIATED.

Wanted: responsible woman to care for three children (ages 6, 4 and 4 months) in my home in East Cobb County one afternoon (4-5) hours per week. \$8 per hour; day of the week is flexible; references required; must have own transportation. Please contact Charlotte (770-380-1374)

Childcare needed after school for one 9-year-old. East Roswell. Wednesdays and Thursdays. Good pay for the right person. Excellent references. Call 678-352-9811.

Part-time childcare provider needed in Smyrna area 3-5 days per week from 1pm - 5pm to assist parent in home. Please call 770-432-7441 if interested. Early childcare development student preferred. \$7-\$8/hr.

East-Cobb family looking for a responsible, fun caregiver for 3 children (ages 7, 4 and 1) and light help around the house, 1-2 days per week. Prefer Thursdays, but day/hours are flexible. References required. Must have own transportation. Call Lisa at 678-560-5820.

PT Nanny wanted for very fun, active 2 yr old boy and 9 mo old girl. Either Thursdays or Fridays (7a - 7p), plus some weekend hours. Must be loving, energetic, non-smoker with experience. Valid references, car and good driving record req'd. If interested, please call Marcia, 404-250-1565.

420 Full Time Positions

Lifeguards for 2004 Summer in North Myrtle Beach No experience Apply www.nsbllifeguards.com

Bail Bonding Agent full/part time will train to underwrite bail bonds; business/criminal justice a plus, Cherokee Co. position night/day /weekend hourly /commision, fax resume 678-623-3068 or e-mail chrisb@anytimebail.com

430 PT and/or FT

Love art, Love Kids. Young Rembrandts needs art instructors for minimal part time work (2 to 6 hrs/week) in the Kennesaw area. Must be able to work at least 2 days per week between 2 and 4 PM. No degree necessary but a background in art and experience working with children is required. Excellent Pay! Please call Young Rembrandts at (770) 424-5685

HELP! My office is a mess. Can you straighten me out & keep me that way? P/T perm, Fridays 8:30A-5:30P. Need top organizer, project mgr, set up & implement procedures. Computer savvy, med ofc &/or ins claims exp a plus. Start \$12.50/hr. Fax/email resume, cover 770.926.0762, pshrink@aol.com.

Sales Office - Needs detailed person for various clerical duties and pricing merchandise - mailorder company. M-F, 20-25 hrs, close to campus. Tel 770-928-3338, Fax 770-928-1718

Sales office hiring for clerical duties. Data entry required. Daytime 25-30 hours flexible. Close to campus. 770-928-3338 Fax 770-928-1718

Need part-time assistant for children's fitness program in North Fulton County. Email resume to kpkenney@aol.com

PT-Childcare needed for 7yr old, very well-mannered. Location is in E. Cobb near Roswell/Woodstock area, hrs. are 2:30-6:00PM, 3 to 4 days a week-you pick the days but Fri. is a must. Ref. required, Plse call 770-933-1333 leave message

P/T HELP WANTED: Lake management company in Woodstock seeking P/T help 2-3 days per week. Must be able to work full days (7 am - 4 pm). Outdoor work in aquatic management and assisting with landscape restoration as needed. Prior outdoor work experience preferred. Training provided. Valid DL required. Non-smoking, drug free workplace. Starts at \$9/hour. Possible F/T in summer. Call 678-445-0077 x208 or e-mail paulslovisky@aquascape.net.

ATTENTION EDUCATION & PSYCHOLOGY MAJORS-The parents of an adorable five year-old autistic boy seek students who enjoy working with children to assist with his Applied Behavior Analysis (ABA) therapy. Student tutors will gain experience in ABA, positive reinforcement techniques, data collection, and exposure to a developmentally disabled child and his family. Will be trained and supervised by an experienced ABA consultant. An hourly rate of between 8 and 12 dollars will be paid depending on experience for these part-time positions. Prior experience NOT a requirement. Powder Springs location 20 minutes from KSU. Please contact Mr. Meyer ASAP at (404) 346-7400 day or (770) 514-0328 evening & weekends.

Find your nanny thru www.ksusentinelclassifieds.com

LOCAL INSURANCE OFFICE HAS AN OPENING FOR AN ENTRY-LEVEL STAFF POSITION. IF YOU ARE PLEASANT AND PERSONABLE, CAREER-MINDED, AMBITIOUS SELF-STARTER WITH GOOD WORK HABITS, PLEASE FAX RESUME. HARMON AGENCY INC. 3162 JOHNSON FERRY RD STE 115 MARIETTA, GA 30062 PHONE AT 770 992 6202 OR FAX 770 992 6544 NO EXPERIENCE REQUIRED.AN EQUAL OPPORTUNITY EMPLOYER

Customer Service National Pool Company Seeking Individuals w/ excellent phone skills to fill inbound calls (No cold calls or soliciting) Professional Environment Salary + Bonus On bus line (770) 951 1831 ext 3031

Boise Office Solutions is currently hiring for PT work in our distribution facility located in Smyrna, GA. 2nd shifts with flexible hours. Benefits available for associates that work 20+ hours per week. Includes medical, vacation & 401k plan. Nice warehouse environment - must be able to lift between 25 and 60lbs. Pay Range \$10.58- \$15.35. Email resumes to 32_HumanResources@boiseoffice.com.

High-volume Marietta law firm seeks individual to handle making copies, filing and sending office mail. 25-30 hours per week with flexible hours. Must be responsible, dependable, detail-oriented person. Fax resume to 770-424-5205

PART TIME RESTAURANT STAFF(Bartender & Greeter) needed at Cherokee Country Club located in N. Fulton near GA 400 & Northridge. Bartender rate is \$11-\$11.50 flat rate and Greeter \$10. Phone Jaime Walker at 770-993-4407. DRUGS DONT WORK

Daytime kitchen staff. Jake's Ice Cream in Kennesaw is seeking a fulltime kitchen staff person now. 10:00 a.m. - 3:00 p.m. shift. Four days a week minimum. Excellent hourly rate. Fun environment, friendly management and all the ice cream you can eat. Contact Kyle Jenkins at kyle@jakeskennesaw.com or (678) 331-1007.

440 Opportunities/Sales

Sperm Donors! Make up to \$130 weekly while helping others by becoming a Xytex sperm donor! Call 800-277-3210 for more information.

EGG DONORS NEEDED: Infertility clinic seeks healthy women 21-31 years old to donate eggs. Free medical screening. \$6,000 compensation if matched and cycle completed. For information call 404-843-0579 or visit www.rba-online.com.

Crunch seeks aggressive people to set appts in Customer Relations. "No cold calling or sales involved." Fun Rock & Roll atmosphere \$9-15/hr. Free membership. Bilingual, a plus. Call 770-956-1028.

If it seems too good to be true - it probably is! Please carefully check out all offers and services BEFORE sending money, giving personal or financial information, or signing anything. Be careful!

600 Travel

PANAMA CITY BEACH, FL SPRING BREAK. World Famous Tiki Bar! Sandpiper Beacon Beach Resort. 8 0 0 - 4 8 8 - 8 8 2 8 . www.sandpiperbeacon.com The Fun Place

Spring Break 2004. Travel with STS, America's #1 Student Tour Operator to Jamaica, Cancun, Acapulco, Bahamas and Florida. Plan your Spring Break now! Call for group discounts. Information/Reservations 1-800-648-4849 or www.ststravel.com.

Campus Positions

COMPLETE LISTING OF ON CAMPUS JOBS AT: www.kennesaw.edu/student_life Need a campus job? Have an opening in your office? The KSU Student Life Center is providing an additional service for students seeking campus jobs and offices seeking student assistants. Go to: http://www.kennesaw.edu/student_life/studentjobs.shtml GET INVOLVED! Over 100 organizations & clubs to choose from. Many styles, sizes to fit all schedules. Contact the Student Life Center for a free trial offer! 770-423-6280. Call today!

SPRING BREAK Student Express 7 nights up to \$600 CASH BACK/rm. Based on \$150 pp when you book a quad room with Student Express, Inc. Cancun Beachfront from \$499 pp* After rebate, based on quad occupancy plus US/Int'l departure taxes & fees. > Acapulco \$449* > Mazatlan \$439* > S. Padre \$429*/day. 1-800-SURFS-UP www.studentexpress.com

CASH for JEANS We Sell Jeans for Men, Women & Children We have thousands to choose from. Get the best brands for less. Georgia's Best Selection of Used Jeans, Jackets, & Overalls Great Selection of Denim Jackets! \$28.00 & Less VISIT US ON THE WEB www.cashforjeans.com \$590-7733 We're in the first Shopping Center on your night past East Piedmont Open Monday-Saturday 11am-6pm 2956 Canton Road - Marietta WE BUY & SELL USED LEVI'S

CRUISE PLANNERS™ Atlanta Area 770-704-7639 Toll Free 877-621-3276 www.blueskycruiseplanners.com Book your Spring Break Vacation NOW to get the best accommodations. CANCUN JAMAICA NASSAU Spring Break Cruises 3/6/04-3/14/04 From* 4 night Bahamas cruise on Royal Caribbean Sovereign of the Sea departing Pt. Canaveral on 3/8/03 \$329.00 5 night Western Caribbean cruise on Carnival Sensation from Tampa on 3/6/03 \$499.00 7 night Eastern Caribbean cruise on Carnival Glory departing from Pt. Canaveral 3/6/03 \$599.00 Call today for these and other specials!!! *Subject to availability, prices are per person double occupancy, include port charges, taxes from \$28.55 to \$45.81 are additional. You must be 21 to cruise. Call for quad pricing.

AFFORDABLE HEALTHCARE Medical benefits • Everyone qualifies Doctors • Hospitals • Dentist • Vision \$29-\$89/mo. 678-779-5178 E-mail: healthadvisor@hotmail.com USC United Service Association For Health Care

RATE A PIC Meet Your Sweetheart at Sentinel's Rate a Pic Rate thousands of photos Browse by gender and state Send a free and anonymous message Meet your Valentine www.ksusentinel.com/ratepic Good job & great pay! Write for us. It could be right for you. KSU Student Media www.kennesaw.edu/student_life/mediajoin.shtml

Find YOUR Mary Poppins by placing your CHILDCARE ad with us!

www.KSUSentinelclassifieds.com RATE - \$8.50 for the first 250 characters (about 40 words), 2¢ per additional character. All major credit cards accepted. Pre-payment is required. Deadline: Sunday 5 p.m. E.S.T. To place your order, visit: www.KSUSentinelclassifieds.com Neither Universal Advertising nor The Sentinel assume responsibility for damages resulting from any advertisements. The Sentinel does not accept "work-at-home" or "work-from-home" advertisements. Complete acceptance policies are available at: www.kennesaw.edu/student_life/sentinel/advertising2.html. We reserve the right to reject any advertisement and select categories. It's easy to place a classified - you can place and pay for your ad: www.KSUSentinelclassifieds.com Don't have a computer? Call us and we'll help! 770-423-6470. universal ADVERTISING www.universaladvertising.com The fastest and easiest way to place your classified ad is through the world wide web at: www.KSUSentinelclassifieds.com Send payments to: Universal Advertising, Inc. P.O. Box 31188 Atlanta, GA 19188 sales@universaladvertising.com