

<u>Contents</u>	
News.....	1-5
Campus Organizations.....	6-7
Arts & Entertainment.....	8-9
Ads.....	10-11
Sports.....	12-13
Editorials/Opinions.....	14
Poetry.....	15
Comics.....	16

A Winter Wonderland at SPSU

By LeVar Gilford

Do you remember what you were doing on February 24, 1999, at 1 a.m? Well if you live in either the Residence Halls or in University Commons, that day will live in infamy for the rest of your college career. That was the night of the biggest snowball fight that Southern Polytechnic State University has ever seen.

Snowflakes began to fall around midnight on the 24th and didn't appear to have much of a chance of sticking. No one knew that thirty minutes later, it would begin to come down as if it were rain. Initially, two or three students over in University Commons saw that it

was here to stay, and decided to be the first to have their footprints in the snow. As they ran around having fun, a few more students began to come out of their doors to view the happenings outside. After a couple of minutes a few snowballs were being tossed around and then the strangest thing happened. The great epidemic of "snow fever" began to take its toll on the students.

More and more individuals began to come out of their apartments and the students also began flooding out of the dorms. At this point the biggest snowball fight that the state of Georgia has likely ever seen took place. There were approxi-

mately 500 students between the dorms and the apartments rolling in snow, throwing snowballs, and making snowmen. Individuals even began to form teams and create their own "snow wars" outside. The feature of the night appeared to be the University Police. For some reason every time a police vehicle drove by, all activity stopped and the main focus was to pellet the car with as many snowballs as possible. Luckily, the University Police took it all in stride.

Unfortunately though, with every bit of fun that happens on a mass scale, something has to go wrong to counteract that. There was one student who for some

unknown reason got too caught up in the moment and decided to tackle an officer as he stepped out of his car. There were also other individuals who broke windows by throwing snow at them. Overall, there were not that many problems and everyone

had fun. Students from the north could not fathom why everyone was so crazy about the snow. We say to them, "Welcome to the south and stay a while, you'll see why!"



Kansas City, Here We Come!

By Monica Senior

On March 24 - 28, 1999, Southern Polytechnic Society of Black Engineers will have twenty-one students attending the 25th Silver Anniversary of the Annual National Convention in Kansas City, Missouri. Of these twenty-one students, three of them represent Southern Poly on a larger scale within NSBE: Andre' Willis, the National Chair, Melissa Cherry, Regional Academic Excellence Chair, and Derick Davis, Regional Finance Chair. Also, representing for Southern Poly and Region III at the convention is Al Kerr, who will be competing for 1st place in the National Oratorical

contest. Southern Poly is also in the running for several National Awards such as the Fed Ex Chapter of the Year and National Incentive Awards.

The convention provides a unique opportunity for students and professionals to grow through academic, professional, and career development. NSBE leads the African American technical community, and the convention is the cornerstone of the organization's activities. By attending this convention, students are afforded the opportunity to

- Gain professional development through workshops
- Make professional contacts with

representatives from corporations and universities with direct hiring authority

- Network with industry and government representatives providing access to scholarships and fellowships
- Build the technical knowledge base of the African American community
- Celebrate African American achievement and excellence
- Contribute to the organizational development of NSBE
- Network with NSBE peers to reinforce a collective commitment to academic achievement, personal

development, and cultural awareness

General Convention activities include:

- Over 80 workshops
- Two-Day Career Fair
- Graduate School Fair
- Opening, Closing and Plenary Sessions
- Golden Torch Awards
- Banquet
- Corporate Sponsored Hospitality Suites
- Entertainment

NSBE conventions attract high-profile speakers for Opening Session, Plenary and Banquet programs and workshops. The opening session speaker on Wednesday, March 24, at 7:00pm is Myrlie Evers-

Williams, civil rights activist, head of the Medgar Evers Institute and former chairman of the National Association for the advancement of Colored People.

Southern Poly's students will definitely benefit from such an auspicious series of events. Members of the Southern Polytechnic Society of Black Engineers and myself, would like to thank everyone who made contributions to the organization through the donation of funds, participation in fund-raisers, efforts to have money allocated by deadlines, and input on the corporate proposal. SPSU will certainly be represented!

Cobb Education Consortium Holds Legislative Event

The Cobb Education Consortium recently held its 7th Annual Legislative Relations Event at the State Capitol Complex in Atlanta. Members of the Bartow, Cobb, and Paulding Legislative Delegations were special guests of the six consortium schools. Dr. Richard Benjamin, Chair of the Cobb Consortium and Superintendent of the Cobb County Schools, presided at the program.

The featured speaker for the luncheon was newly elected Georgia Governor, Roy Barnes. Governor Barnes outlined his educational agenda for the next four years, which includes the implementation of a seamless approach to a secondary – post-secondary education for students. Dr. Harlon Crimm, President of Chattahoochee Tech, introduced the governor and Dr. Ken Allen, President of North Metro Tech, gave the response and presented a gift to the governor on behalf of the consortium members.

Mr. Ron Galloway, Superintendent of the Marietta City Schools, introduced members of the Legislative Delegation, and Dr. Lisa Rossbacher, President of Southern Polytechnic State University, presented each member school and their special guests to the assembled audience.

Several special awards were also presented. Governor Zell Miller was presented an award as "The Education Governor". Lt. Governor

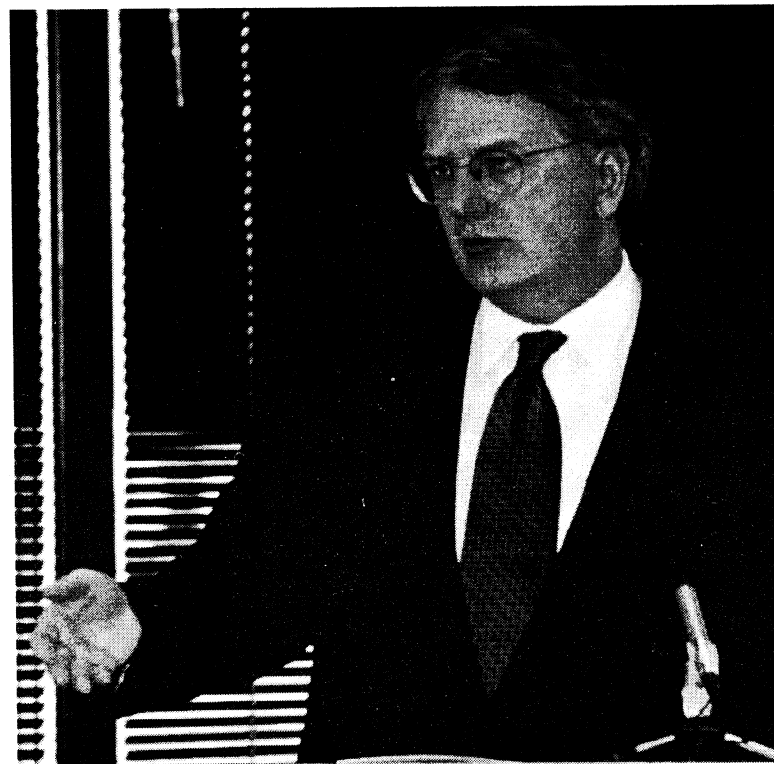
Mark Taylor of Albany accepted this award on Governor Miller's behalf. A student scholarship award named for former Cobb legislator, Jack Vaughan Jr., was also presented to Sheri Eakley, an Associate Degree Accounting Major from Chattahoochee Tech. The Chattahoochee Tech Foundation presented this cash award to Eakley.

Prior to the Legislative luncheon, members of the Cobb Consortium's Leadership Academy attended a legislative

briefing featuring key members of the Cobb Delegation and members of the Senate Education Committees.

Members of the Cobb Education Consortium include: Cobb County Schools, Dr. Richard Benjamin; Chattahoochee Technical Institute, Dr. Harlon Crimm;

Kennesaw State University, Dr. Betty Siegel; Marietta City Schools, Mr. Ron Galloway; North Metro Tech, Dr. Ken Allen; and Southern Polytechnic State University, Dr. Lisa A. Rossbacher.



A Presidential Inauguration

By Melissa Cherry

The inauguration of Dr. Lisa A. Rossbacher, will be held on the Campus of Southern Polytechnic State University from Thursday April 29th to Saturday May 1st 1999. This 3-day affair is being managed by a committee of campus personnel and students, co-chaired by Mary Philips, Assistant to the President and Dawn Ramsey from Continuing Education.

The activities planned for Thursday include a CEO Breakfast and a Campus Picnic. The format for the picnic will be similar to that of last year, with faculty, staff and students welcome. Thursday night will be the date for a Scholarly Lecture conducted by Dr. Julie Newell from the Department of Social and International Studies here at SPSU.

The actual installation ceremony will be on Friday at 2pm, preceded by a private luncheon in the Dogwood dining room in the Student Center. The Installation itself will be held in the Gym. Officials from all of the schools in the University System of Georgia as well as neighboring states are being invited.

Saturday morning will be used for a public service activity. Boy and girl scouts from all over Cobb County will assemble on campus to earn Merit badges as well as Interest badges. This activity will require the input of students as well as faculty members. It is expected that at least 200 eleven to seventeen year olds will participate in this activity.

Saturday evening will be the Inaugural Ball. This event is the only one where a fee will be assessed, final details are

still being worked out, but it will not be held on Campus. The dress code will be black tie.

Many students are probably not aware of the significance of this event, but it is set to be a celebration the likes of which this campus has never seen. Yes, it will be held the weekend before finals, but I am sure that we can spend two hours Thursday through Saturday being part of such an historical

occasion.

This is our school, and events like this give us, as students, the opportunity to show our support for our president, and also the opportunity to mingle with administrators that we may not have the opportunity to meet otherwise. Take up the opportunity to be part of something that promises to go down in the annals of SPSU history.

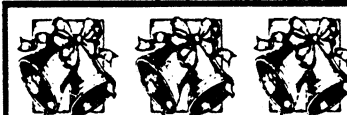
Southern Polytechnic State University



*Inauguration of
President
Lisa A. Rossbacher*

April 30, 1999

... Save this date



**TEE-RIFIC
GIFT IDEA**



The "Lung" Golf Privilege Card Buy 3 Cards, Get 4th FREE

Play on the Finest Courses in Georgia, Florida, Alabama, Mississippi & South Carolina

AMERICAN LUNG ASSOCIATION of Georgia

1-800-LUNG USA

www.golfsouth.org

SGA UPDATE

By Melissa Cherry

In the last edition of the STING, you were informed that Budgets for 1999-2000 from student organizations were due to the SGA by March 1, 1999. We have received many budgets and are currently working on the actual allocation of funds. To help clarify questions that we may have concerning submittals, the Budget and Finance Committee, along with the SGA President and Vice President will be setting appointments with organizations. If an organization feels the need to schedule such an appointment, do not hesitate to contact us at sga@spsu.edu (be sure to type in the whole thing).

Organizations who submit late budgets will be regarded last.

Elections of Student Government Association Officers and Council members will be held from April 5th -9th 1999. The ballot will

be mobile to accommodate as many students as possible engaging in the voting process. Applications can be picked up from the Student Center Information Desk. The deadline for application submittals is March 29th at 7pm. This time between submittal deadlines and actual voting is to allow the election committee time to prepare a handout for voters to be educated on the views of candidates.

In the past two years, voter turnout has remained at a steady 5%. This is totally outrageous to me since the Student Government is responsible for so many issues that directly affect students; from the allocation of Student Activity Fees, to the numerous campus committees that we are a part of. As students in this institution, we have a variety of issues that affect us, and a direct avenue to actually doing something to solve these problems is through the Student

Government Association.

Apart from voter turnout, another issue is finding candidates to actually run for the positions. When I decided to run for the position of SGA President last year, it was with the intent to make a positive difference in the life of all students.

As a member of the student government, I have been involved in so many campus decisions and a part of committees that I had no idea existed prior to my presidency. It is our duty to keep our decision-makers accountable to students for their decisions, and even better when you can be a part of the decision-making process. I urge you to run for a position.

The positions open are President, Vice-President, Secretary/Treasurer, or one of ten council members. The council members serve on committees within the student

government like Budget and Finance, Internal Affairs, Public Relations and in this next year a Technology Committee. Being a part of the Student Government is a learning experience and fun sometimes. On the larger scale of things it is the voice of the students. If you have a little time and you care about our university, please run for a position. If you need additional information on responsibilities

and time requirements email me @ mcherry@spsu.edu, or sga@spsu.edu.

**Don't Forget!
Deadline for
Application
Submittal for SGA
is March 29th!**



The STING Staff

Editor

LeVar Gilford

News

Melissa Cherry
Derick Davis
Shaidu Kiven
Monica Senior
Kristie Todd
Kelleen D. Williams

Layout and Design

Jeff Combs

Photography

Greg Champion

Arts and Entertainment

David Eskridge
Frank Lopez



The STING is published biweekly for the students, faculty and staff of Southern Polytechnic State University. The STING is an official publication of Southern Polytechnic State University. The ideas expressed herein are those of the editor or the individual authors, and do not necessarily reflect the views of the students, faculty or staff of Southern Polytechnic State University or the University System of Georgia.

Advertising Information. The local advertising rate of **The STING** is three dollars per column inch for ads smaller than one quarter page. Other pages available upon request. Ads for service and professional organizations on campus are free, but no run date can be guaranteed. Classified ads are running \$5.00 for the first 30 words, and 15 cents for each additional word. Contact **The STING** to place an ad.

Letters to the Editor. **The STING** welcomes letters on any topic. Letters should be typed or neatly printed, double-spaced and should not exceed three hundred words. Letters must include a name. Unsigned letters will not be printed. **The STING** reserves the right to edit letters for style, content or size. All letters are run on a space-available basis. Please send all letters to **The STING**, Southern Polytechnic State University, 1100 South Marietta Parkway, Marietta, GA 30060-2896, or e-mail cstanfor@spsu.edu, or drop them off at **The STING** office, Room 252 in the Joe Mack Wilson Student Center. All letters must be in before the deadline printed below.

Organization Articles. Articles must be submitted by the deadline printed below and typed on a 3.5 inch PC computer disc. Please limit articles to two hundred words. All such articles are subject to editing for style or content, and are run on a space-available basis.

Price. **The STING** offers to every student, faculty, staff member, alumni, and official visitor of Southern Polytechnic State University complimentary copies of each issue numbering up to 0.25% of the print run for the respective issue.

Joining The STING. Any student paying activity fees is eligible to join **The STING**. We prefer creative students who have passed English 110. Contact the Editor at (770) 528-7310 or stop by the office to pick-up an application.

What S.P.S.U. Students are Doing: Spring Break '99

ATET:

- I'm sleeping.

CSci:

- I'm going to UGA to visit my folk.
- Daytona, here I come.
- I'm going home.

ECET:

- Catching up on back-sleep.
- I don't know.
- I'm going to Hilton Head.

CPET:

- I am resting.
- I'm going catch up on my favorite TV shows.

IET:

- Nothing.
- Sleeping, watching TV, and shopping.
- Hanging with my friends.
- Nothing. I'm waiting for Freaknik.
- Going to Virginia and South Carolina.

ARCH:

- I'm going to eat Breakfast, Lunch, And Dinner everyday.
- Sleeping, Eating, and sleeping some more.

MET:

- Working and Sitting around.

CET:

- Going to a Condo in North Carolina.

MATH STINGER

By Dr. Joel C. Fowler
Associate Professor of Mathematics

The last puzzle was to determine (with justification) those values of n for which an $n \times n$ checkerboard can be covered with T-shaped tiles (three squares in a line with one more on the center of the three, ...). The correct answer is all n divisible by 4. The only correct solver was Alan Gabrielli.

The new Stinger continues the tiling theme, but with an easier problem. For what values on n can an $n \times n$ checkerboard be covered with "S" tiles. These are tiles of four squares in the shape:



As before, a full answer consists not only of the correct values of n , but also a justification of why it can be done for those values and why it can't be done for all others.

MATH STINGER IS NOW ON THE WEB. The current Stinger as well as many past Stingers is on the Mathematics Department page on the Southern Polytechnic State University page. Check it out!

Answers should be sent, via conventional methods or e-mail (jfowler@spsu.edu), to Joel Fowler in the Mathematics Department. Correct answers and the names of the first to find them will be printed in the next issue of The Sting.

Are you an organ & tissue donor?

Ask your family today, and let them know your decision, too. That way you'll know, they'll know, and there will be no question later. For a free brochure, call 1-800-355-SHARE.

Share your life. Share your decision.



The Georgia Coalition on Donation



NSBE's First Annual Fashion Show

By Kristie Todd

On Friday, February 12, 1999 the National Society of Black Engineers sponsored the 1st Annual Fashion Show that was coordinated by Edward Simpson and Monica Senior. Some of the scenes that were showcased were Casual, Business, Formal, Athletic, Club, Sleepwear, and Swimwear. As the models sashayed down the catwalk, the attitude of "I know I look good" was clearly expressed

on their faces. Each model had their own style that blended well with the scene. As one picture shows, sophomore, Muhammad Hameed, is modeling a Black 2 Basics outfit that was designed by one of Southern Poly's own. His suave and sexy attitude tantalized all of the women in the audience as he slowly moved across the stage.

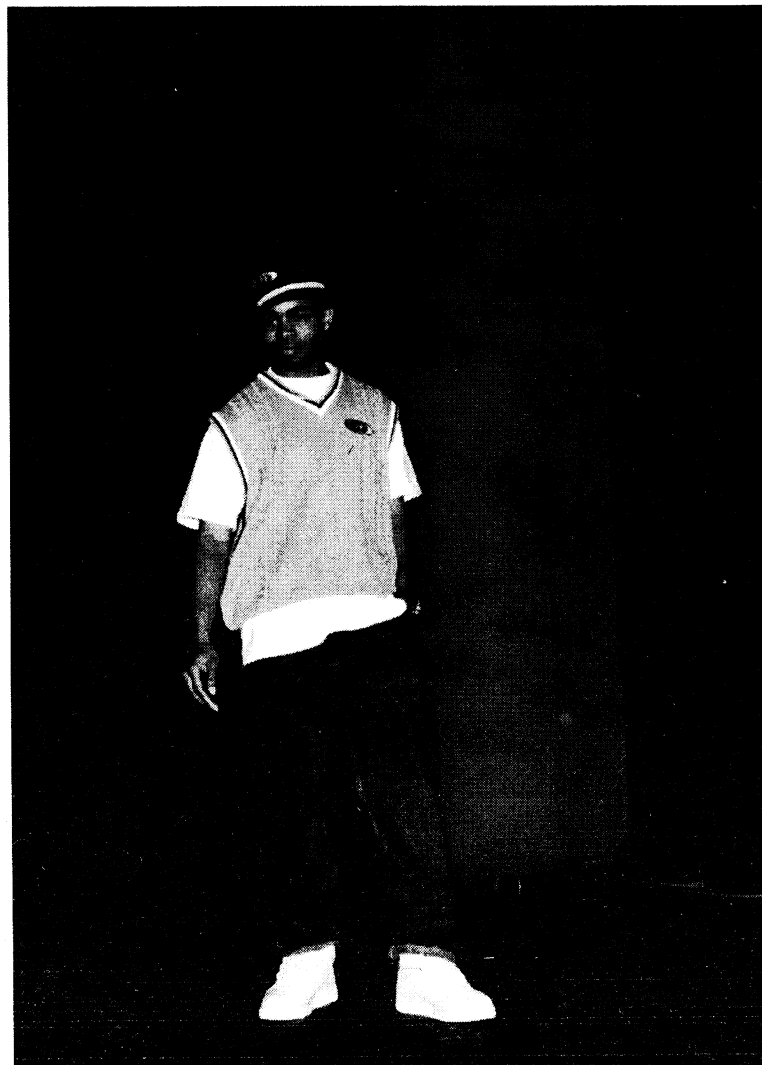
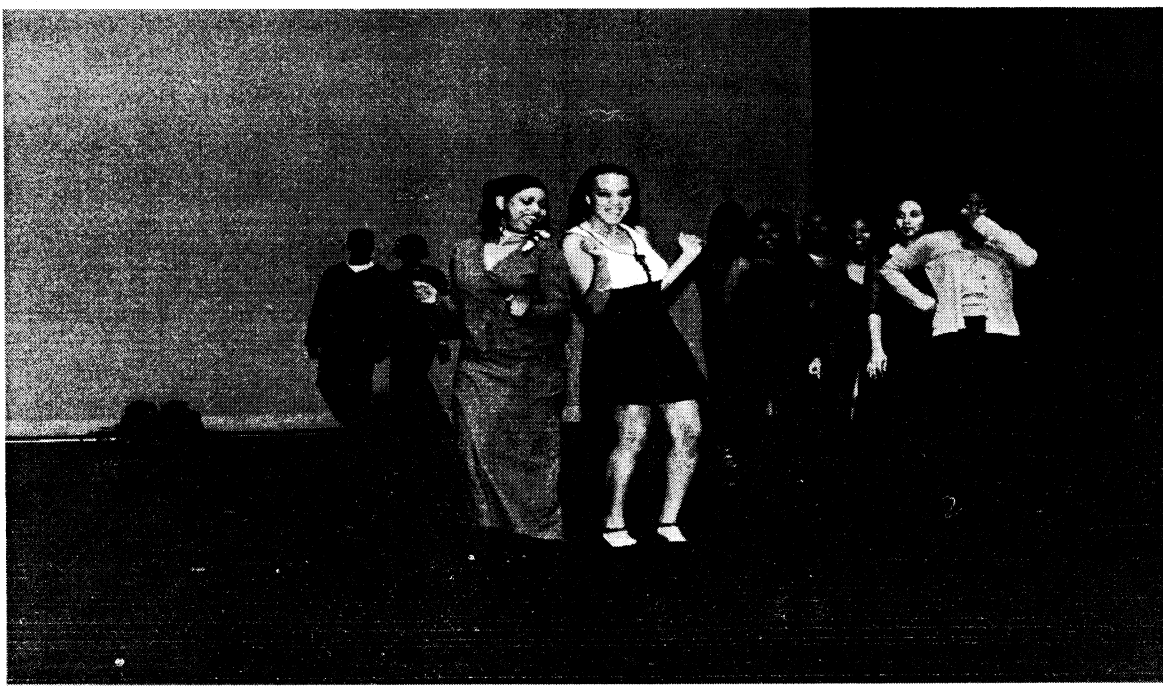
As the scenes changed, so did the mood and attitudes of the models. They really gave it their all, along with

some extra pizzazz to keep the audience's attention aroused. All of the models were members of NSBE and enjoyed putting the show together for all of the students, faculty, and staff of SPSU. The members expressed that they were very nervous at first; however, the nervousness ceased as the show gradually moved along.

The fashion show was a great success and was very reflective of the hard work that the models and stage

crew put into it. So to Ebony, Michelle, Tamica, Evita, ShaTonya, Kelleen, Tawonna, Melanie, Lakeisha, Elliott, Dexter, Yves, Monica, Kamal, Zappora, Valerie, Ed, Nicole,

Al, Jarmon, Willie, LeRhonda, and Kristie, congratulations on a job well done and see you next year!



Southern Polytechnic State University Aerial Robotics Team calls for *working* team members!

This is an excellent opportunity to learn! No experience is necessary. Companies visiting the last competition were going from team to team looking for employees! We expect the freshmen members to learn about the project and be in a position to carry the project in future competitions. As with any research project we are all learning as we go. All of our experts are "green". As an example, many of our freshmen members are providing valuable input to the team software development solutions.

All applicants must have the time to spend three to five hours per week for the completion of their work. Applicants should work well with teams or be willing to improve their teamwork skills. Self starters and results oriented members are welcome. There is no compensation for membership on the team, except for the implied team work experience, which should be valuable to future potential employers. Some departments on campus will accept formal papers for class credits based on your participa-

tion and experience with the Aerial Robotics Team. All positions may be filled with more than one member, and members may be assigned to more than one area, if agreeable to all parties.

If you have interest in any of these positions please contact us through e-mail: cpergantis@mindspring.com

The following is a listing of the jobs available on the Aerial Robotics Team:

Pilot/Mechanic responsibilities:

- include the training of staff for the manual control of the helicopter using the remote radio controller
- include the maintenance and tuning of the helicopter
- include travel with the team for the competition
- include standby, emergency control of the helicopter during the competition

Helicopter/Mechanical Designer responsibilities

- include the initial design of, the completion of prototypes, and the final implementation of associated helicopter parts and the integration of those parts
- include drawings, approvals and the building of helicopter associated parts and whole

Rover/Mechanical Designer responsibilities

- include the initial design of, the completion of prototypes, and the final implementation of associated rover parts and the integration of those parts
- include drawings, approvals and the building of rover associated parts and whole

Electrical/Electronics Designer responsibilities

- include the initial design of, the completion of prototypes, and the final implementation of antenna design and wireless

communication

- include drawings, approvals and the building of electronic associated parts and whole
- include participation on the rover and the helicopter, software development

Administrative responsibilities

- include maintenance of the budget
- interface to other school organizations
- create and incorporate a technical transition process

Industrial Designer/ Promotional responsibilities

- include input to the overall design and image of the project design including logos, body design of the rover and helicopter
- include the design and production of the team T-shirt

Embedded Systems De-

signer/Development responsibilities

- include real-time application development - interface to gps ahrs sonar and other sensory subsystems
- include com port and tcpip communications

Artificial Intelligence/ Vision Recognition/ Development responsibilities

- include visual recognition application development
- include com port and tcpip communications

If you have interest in any of these positions the Aerial Robotics Team meets every Saturday at 9:00 a.m. in room 265 in the Student Center.

Society of Manufacturing Engineers

The Student Chapter of SME held a meeting Tuesday, February 9, 1999 at 5:00 p.m. in the MET Building.

The SME student chapter is a professional society that is open to anyone that is interested in manufacturing engineering and technology, and happens to be an engineering student. We are part of the international society of the same name.

The February meeting was held to elect officers. Elected was Howard Dittrich as ChairPerson, Anthony Solomon as Chairman Elect and Aaron Alexander as Secretary. Left vacant was the position of activities director. Professor Davis is currently serving as faculty advisor replacing Professor Horton. Many thanks to Professor Horton for his valued time and service to the student chapter. Dr. Brani is presently serving as treasurer. Volunteers were requested

and solicited for the Science Olympiad held Saturday, February 13, 1999 and also for Sci-Trek on Saturday, February 27, 1999. Pizza and soda were provided by SME.

During the meeting discussion was held on direction of the organization and goals for this year. We have great plans for the upcoming (1999-2000). Such plans include:

- Providing volunteers for the "toothpick bridge building" contest held annually at Sci-Trek for elementary school children from surrounding areas.
- Again providing volunteers for the Science Olympiad held annually at SPSU for middle school children from surrounding area schools.
- Touring multiple manufacturing centers and plants as a student chapter and also with the Senior Chapter of SME located in

Atlanta.

- Sending 3 students and a Faculty Advisor to Greenville Tool show.

- Working with the Society of Automobile Engineering Student Chapter to help manufacture their Formula 1 RaceCar.

- Increasing Enrollment through chapter meetings, plant tours, and other areas.

Attendance has significantly increased, however we are always interested in additional members and support.

Volunteers for the Science Olympiad hosted by SPSU assisted in registration, data entry, and testing assistance in the egg drop project. With a lot of exceptional entries there could only be one winner. This statewide event held annually at SPSU gives Georgia middle school students opportunity to compete in a variety of science categories

toward national recognition. This event turned out to be an enjoyable and enlightening experience for both participants and volunteers.

SME also sponsored the 8th annual "toothpick bridge building" contest held at Sci-Trek. Our volunteers assisted with registration, data collection, and testing of 240 student entries. The bridges sustained crush weights from 1 to 114 psi. Many clever and unusual designs were submitted for this annual destruction event. SPSU also displayed their Formula 1 RaceCar and suspension bridge for viewing by the contest entrants during this event.

SPSU was well represented by faculty, students and alumni on Saturday evening, February 27, 1999 at the Metro-Atlanta Engineers Week Awards Banquet. The banquet was held at the Sheraton Buckhead Hotel Atlanta. SPSU's new presi-

dent, Dr. Lisa Rossbacher was introduced as the keynote speaker of the evening by the dean of MET department, Dr. Anthony Tilmans, P.E. Awards for engineering excellence were presented by Tony Parker, P.E. Dinner and entertainment were provided.

This is a sampling of the variety of activities available to SME chapter members. For information regarding membership contact the MET department or E-mail me at dekehjd@bellsouth.net.

Zeta Phi Beta Sorority, Inc.

We are the sisters of the dove. Personifying our principles of scholarship, sisterly love, service, and finer womanhood. Though there may be few of us, we are still remaining an ever-present force on this campus.

We participated in a Valentine's Day fundraiser alongside Delta Sigma Theta Sorority, Inc. It is important to us to help further the efforts of every organization on campus. Look for us in those ever-important SGA meetings, participating in various NSBE functions, and representing our proud university as only an SPSU Ambassador could.

We will be hosting a community service project for the Atlanta Humane Society. Keep an eye out for the flyers and boxes for the items that are needed. We thank you for any support that you may have given and will give in the future.

March is our Finer Womanhood Month. The illustrious ladies of Zeta Phi Beta will be hosting many events on campus. The major focus of these events will be the uplifting and empowerment of women. Its time for us to celebrate and recognize our uniqueness.

Again, we thank you for your support and helpfulness in our efforts. If anyone would like to find out more about our sorority and its principles, please call Kelleen D. Williams at (770) 419-7271.

Lambda Chi Alpha Fraternity

Hello to everyone! I hope the first half of the semester has gone well for you. If not, I hope you were able to get the drop slips in on time. I know I got mine in. We have some big things going on the rest of this semester, starting off with a BIG Playstation Tournament just after Spring Break. I know you have seen these before, but we are offering FREE food and CASH Prizes. Flyers should be out by the time you read this article, so you can get more info from them as to the exact where's and when's.

Our annual White Rose Formal will be held at Amicalola Falls around the end of March. We always have a great time with the alumni that come back to visit and party with us. And, Amicalola Falls is a great place to get away for a short weekend. We have invited our alumni out for a softball game against the actives in April. I sure hope they can keep up. They seemed pretty winded at the flag football game we had last fall.

After finals, many of us will be embarking on our annual alumni canoe trip down the Flint River. We start out below Americus and travel about 17 miles to Reeves Landing. That's right, 17 miles. It takes about 7 hours when you add in the stops for good fishing spots and, um "relaxation". We always have a great time and look forward to the next trip. We already have plans in the works for next fall, so keep an eye out for us. You will definitely see and hear more about it later.

That's it for now. Everyone be sure to take care and study well. But, above all, RELAX. School shouldn't be that stressful. It's not like you can get fired for not paying attention and you can't get canned if you openly dislike your superiors here. Enjoy the experience. You're here by choice, make the best of it.

COAT OF ARMS
OF LAMBDA CHI ALPHA

Mountain Retreat '99: Makes Lasting Impression

If you asked me what was the most memorable part of our mountain retreat I'd tell you "it's too soon to say there are too many good memories to choose one."

Whether the sight of LeVar tumbling wildly down the mountain or the thrill of hurling a deadly snowball crosses my mind, I know I will always remember fondly our mountain excursion. And whether it's getting 'a bit turned around' on the drive-up or finding a nice thank you

gift [for Rhonda Reese] on our drive home, I will look back on this experience and smile.

The awesome spectacle of the snow-topped mountains will forever be dwarfed by the team effort and community support that made our trip possible. And learning to navigate down the slopes, will pale in comparison to knowing that whatever worthy effort a group of committed individuals undertake any goal is attainable.

I wouldn't tell you our

trip was perfect or without our share of challenges, (I would have liked to have had the French Toast too). But the thing is, we pulled together despite the circumstances and made the best of every situation.

And yes, in retrospect we did see that we can improve things like planning and communication, nonetheless, it is both humbling and impressive to see our efforts blossom before our very eyes.

No one knows what the future holds, but certainly the memory that nine young people, with the support of the community, set and reached a lofty goal will endure.



Tau Kappa Epsilon Fraternity

Hello to all the brothers of Tau Kappa Epsilon. RCB went off without a hitch but had many exciting happenings before the night was over with. Many thanks to Doo for doing such a great job setting everything up. Congratulations go out to all those that got awards and you know who you are. To Sweet P, I hope you enjoy that pacifier though it's not as good as the real thing. Maverick finally got his wings and Dude Man no longer has to search for a toilet to puck in. To Angry Man, next year I'm giving you a skeleton key to get out of any confinement area. This was definitely the Blood, Sweat, and Tears party of the year.

We have definitely kicked off the New Year on the right foot so lets keep it up. Lets go out and have fun at those work projects and charity events. After RCB, I'm more than looking forward to the next party the Tekes have. Hey Roy, doing a great job, keeps it up and we'll be sittin pretty under a new love shack. To the new candidate members, doing a good job but not a great one. In my wolf eyes, y'all will never compare. That's all for now my brothers, so lets do what we do best, GIVEM HELL TEKES!!!! Later from the one and only Lone Wolf of SPSU.

The Baha'i Club

The Baha'i Club will take this opportunity to familiarize you with some glimpses of its activities. The Club's activities revolve around the principles of the Baha'i Faith with regards to the promotion of unity and concord among the students, faculty and staff of Southern Polytechnic State University. Our efforts may seem insignificant, our numbers may seem unnoticeable and those principles may seem obscure to many. But, it is our ardent believe that one act of service to the community and sincere efforts, however little that may be, geared towards the awareness of the oneness of humanity will have a lasting effect. You can change a nation by changing one heart at a time! We will share with you a summary of the aims and purpose of the Baha'i as

gleaned from the Baha'i Writings:

The Revelation proclaimed by Baha'u'llah (The Glory of God), His followers believe, is divine in origin, all-embracing in scope, broad in its outlook, scientific in its method, humanitarian in its principles and dynamic in the influence it exerts in the hearts and minds of men. The mission of their Founder of their Faith, they conceive to be to proclaim that religious truth is not absolute but relative, that the Founders of all past religions, though differing in the non-essential aspects of their teachings, "abide in the same tabernacle, soar in the same heaven, are seated upon the same throne, utter the same speech and proclaim the same Faith."

His Cause, they have already demonstrated, stands identified with, and revolves round, the principle of the organic unity of mankind representing the consummation of the process of human evolution. This final stage in this stupendous evolution, they assert, is not only necessary but inevitable, that it is gradually approaching, and that nothing short of the celestial potency with which a divinely ordained message can claim to be endowed can succeed in establishing it.

The Baha'i Faith recognizes the unity of God and His Prophets, upholds the principle of unfettered search after truth, condemns all forms of superstition

and prejudice, teaches that the fundamental purpose of religion is to promote concord and harmony, that it must go hand in hand with science, and that it constitutes the sole and ultimate basis of a peaceful, an ordered and progressive society. It inculcates the principle of equal opportunity, rights and privileges for both sexes, advocates compulsory education, abolishes extremes of poverty and wealth, exalts work perform in the spirit of service to the rank of worship, recommends the adoption of an auxiliary international language, and provides the necessary agencies for the establishment and safeguarding of a permanent and universal peace..."

NSBE

NSBE Celebrates Black History Month

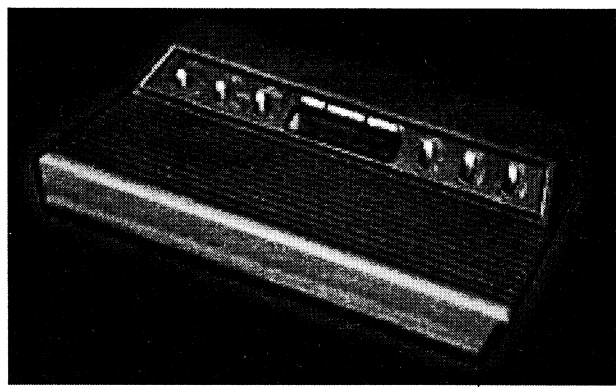
On February 25, NSBE invited the Mango Cultural Arts Dance Troupe to help them celebrate Black History Month. The trio, dressed in native African garb, performed a native West Guinea dance called the "Coo-Coo" to the sounds of a single African drum. Before the actual performance, members of the society were invited to participate with the dance troupe. Everyone gathered in a circle, and the performers the members some African dances. Then the members performed what they had just learned, as well as some of the latest dances. The performance proved to be quite educational, as members of NSBE learned the origins of some of today's latest hip-hop moves.

What was, what is, what will be: The Hardware of Video gaming

This week, we figured we'd bring you a look at some of the highlights of videogaming. These are the systems that created console gaming as we know it today and the machines that will take us into the future. Read up and shed a nostalgic tear, or shudder at the power of the new systems. Next issue, if you behave, we'll tell you about how you can play some of the older games without visiting pawn shops and flea markets.

Atari

System: Atari 2600
Flagship Game: Space Invaders
Release: 1977
CPU: 6507 at 1.19 MHz
Peripherals: 1-button 4-way joystick/ paddle/ keypad controller/ Supercharger tape add-on drive

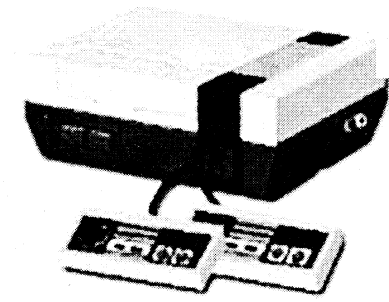


Info: This system really started it all. When Space Invaders was released, a boom in sales of this device had it running strong until 1983. In that year so many third parties got into publishing for the system that the market flooded and failed. By 1984, the video game market was thought dead.

Nintendo

Mascot: Mario
System: Nintendo Entertainment System/ Nintendo Family Computer (Famicom)
Flagship Game: Super Mario Bros.
Release: 1985
CPU: 6502 (8-bit)

Peripherals: 4-button multidirectional pad/Light gun/Misc. others
System specs and additional info were provided by Akop Karapetyan.



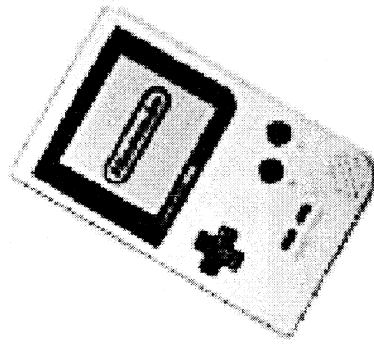
Info: After the Atari collapsed under its own weight, many assumed that video gaming was dead. This platform—which almost became a home computer instead—proved them wrong. Nintendo burst onto the scene. In Japan its first games were hardly any better than

those on the Atari, but by the time it hit the states, programmers had begun to use the machine's abilities. It brought about a

major change in the thinking behind games. The jump in game size and graphical ability allowed game makers to create far more complex and involving games. The Nintendo had the ability to have long, varied gaming experiences. The company used the image of its mascot and the popularity of its system to stay on top for years.

System: Game Boy
Flagship Game: Tetris
Release: 1988
Processor: 6502 (8-bit) at 2.14 MHz
Peripherals: Link cable, battery pack

Info: This hand-held unit has proven to be the most resilient



system in the industry. Time and again, it has looked to be dead only to return with a vengeance. Nintendo has slowly made changes to keep the system alive. They've slimmed it down, lowered the price, and made it color.

System: Super Nintendo/ Super Famicom
Flagship Game: Super Mario World
Release: 1991
CPU: 65816 (16-bit) at 3.58 MHz
Peripherals: 8-button multidirectional pad

Info: Though a slow starter, the Super Nintendo finally took the market from the Genesis towards the end of its life cycle. It was a better system overall, but it didn't have the sports games that Genesis did.

Sega

Mascot: Sonic
System: Genesis/ Megadrive
Flagship Game: Sonic the Hedgehog
Release: 1989
CPU: 68000 (16-bit) at 7.6 MHz
Peripherals: 4-button multidirectional pad.



Upgrades: Sega CD (single-speed CD-ROM drive); 32X (cartridge slot plug-in enhancement)

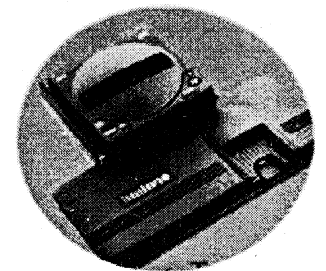
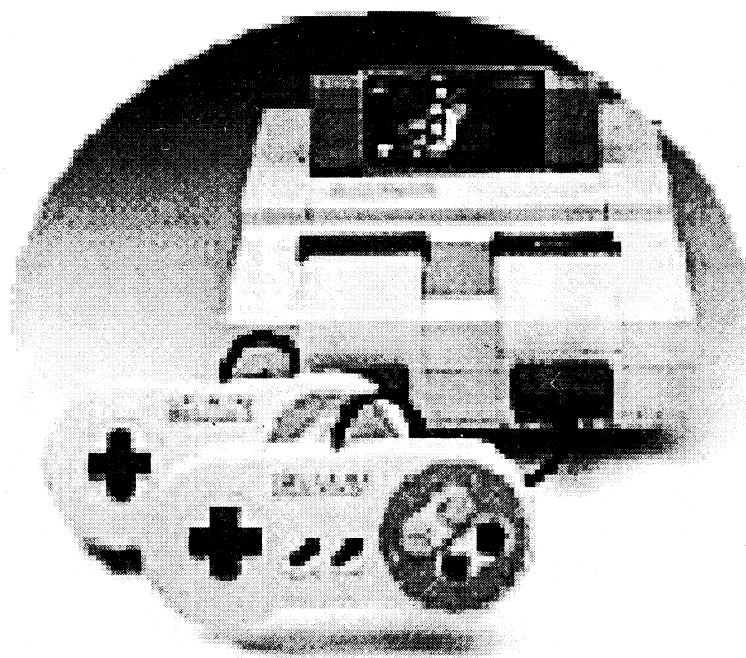
Info: The Genesis started strong, but it slowly lost ground to the better technology of the

Super Nintendo. It owes its success to its sports games. It attempted to regain its dominance with the release of upgrading peripherals, but high cost killed their worth.

NEC

Mascot: Bonk the caveman

System: Turbo Grafx 16/ PC Engine
Flagship Game: The Adventures of Bonk
Release: 1988
CPU: 6820 (8-bit) 16-bit video.
Peripherals: 4-button multi-directional pad.



Info: This system was a bridge between the 8-bit life cycle and the 16-bit cycle. It had 16-bit video but its core was 8-bit. It failed for a lack of game selection and third-party support.

Current

Sony

System: Sony Playstation

Release: 1995

CPU: 32 bit 33.86 MHz

Processing Power: 360,000 polygons per second (no effects to clean up polys)

Dominance: About even with Nintendo 64 in US, reigns supreme elsewhere

Flagship Title: Battle Arena Toshinden

(quickly replaced by Crash Bandicoot)

Top Titles: Final Fantasy 7, Tomb Raider, Tekken, Gran Turismo, and Resident Evil

Peripherals: 10 button Dual Shock analog controllers/Memory Card/ various light guns/link cable

Info: Sony did just about everything right with this console, but the key point in its victory was third party support. Sony provided its third

party publishers with cheap CDs and packaging and its developers with extensive libraries and tools. In Japan, Sony lured away many of Nintendo's most important developers, such as Square (Final Fantasy) and Enix (Dragon Warrior) with the seductive lure of a powerful platform using large storage media allowing for larger games, CD audio music, and full motion video. The system has several hundred games now available and a massive user base.

Nintendo

System: Nintendo 64

Release: 1996

CPU: 64-bit 93.75 MHz

Processing Power: 150,000 polygons per second

Dominance: Fighting with Sony for US, weak elsewhere, but recovering in Japan

Flagship Title: Mario 64

Top Titles: Zelda, Goldeneye, Turok2, Mario Kart 64, and Star Wars: Rogue Squadron

Peripherals: 10 button analog stick and multidirectional pad/Memory and Rumble paks for controller/

Game Boy pak

Info: The Nintendo 64 was a great concept that failed to meet its expectations. The machine is very powerful, but it was released late and was initially very difficult to code for. The Nintendo 64 also lacks a dedicated sound chip, so music and sounds sap CPU power. Worst of all is the outdated cartridge format, which is severely limited in space and painfully expensive.

These problems and Sony's money led to a loss of third party support. The machine gained popularity in the US because of several killer-app games.

Forthcoming

Sega

System: Dreamcast

Release: 1998(Japan) September 1999 US

CPU: 64 bit 200MHz

Processing Power: around 3 million polygons per second

Dominance: Not yet set, doing well in Japan, but not meeting expectations

Flagship Title: Sonic Adventure

Top Titles: Virtua Fighter 3TB, Resident Evil CV, and Raizeleet

Peripherals: Really big control pad/ Visual Memory System (VMS)/ Puru Puru pack force feedback

Info: Sega made the Saturn, snared a bit of the market in Japan, released it in the US, and lost several million dollars from its poor sales. Sega axed the Saturn, and began hyping the Dreamcast about a year ago. Now the Dreamcast is out in Japan and preparing for a September release in the US. The Dreamcast poses a threat to the Playstation and the Nintendo 64 with its powerful processor and diverse features like a memory card/ LCD system combination. However, at Sega's most critical moment, Sony has dropped a Mecha-Godzilla in their pants with the recent announcement for their new system.

Sony

System: Playstation 2 (actual name unknown)

Release: Christmas 1999-March 2000 Japan, Fall 2000 US

CPU: 128 bit 300MHz

Processing Power: estimated 13-20 million polygons per second

Dominance: It may just conquer the Universe

Flagship Title: Unknown

Top Titles: (unconfirmed) Chrono Trigger 2, Tekken 4, Resident Evil 3, and Crash Bandicoot 4

Peripherals: unknown

Info: Sony announced their new DVD-ROM based system a few days ago. The new machine will be compatible with original Playstation games and hardware. Sony is working on creating a machine that can accurately portray emotion in game characters. The system it uses can provide graphics that are nearly on the level of the best computer-generated video clips found in current Playstation games, only calculated in real time. If the machine can support DVD movie playback (it has the hardware to play it, only it may lack the controls to do so) it will be a full home entertainment center. Several developers have already lined up to work on the machine, including Namco (known for Tekken and Pac-Man) and Square (Final Fantasy and Chrono Trigger).

- Dave Eskridge and Frank Lopez



Southern Polytechnic State University
GERMAN INTERNATIONAL EXCHANGE
at Fachhochschule Merseburg
Merseburg, Sachsen-Anhalt
Summer 1999

WHAT: 5 week program for Southern Polytechnic students to participate in an international exchange at FH Merseburg

Study German language, history, and culture

Intensive German language course. Credit for German and/or History

Experience German culture first-hand!

WHO: Southern Polytechnic students interested in study abroad GPA - 2.5+

U.S. residents, foreign nationals (preference to residents)

SPSU institution residency criteria

WHEN: June 14 -July 16, 1999

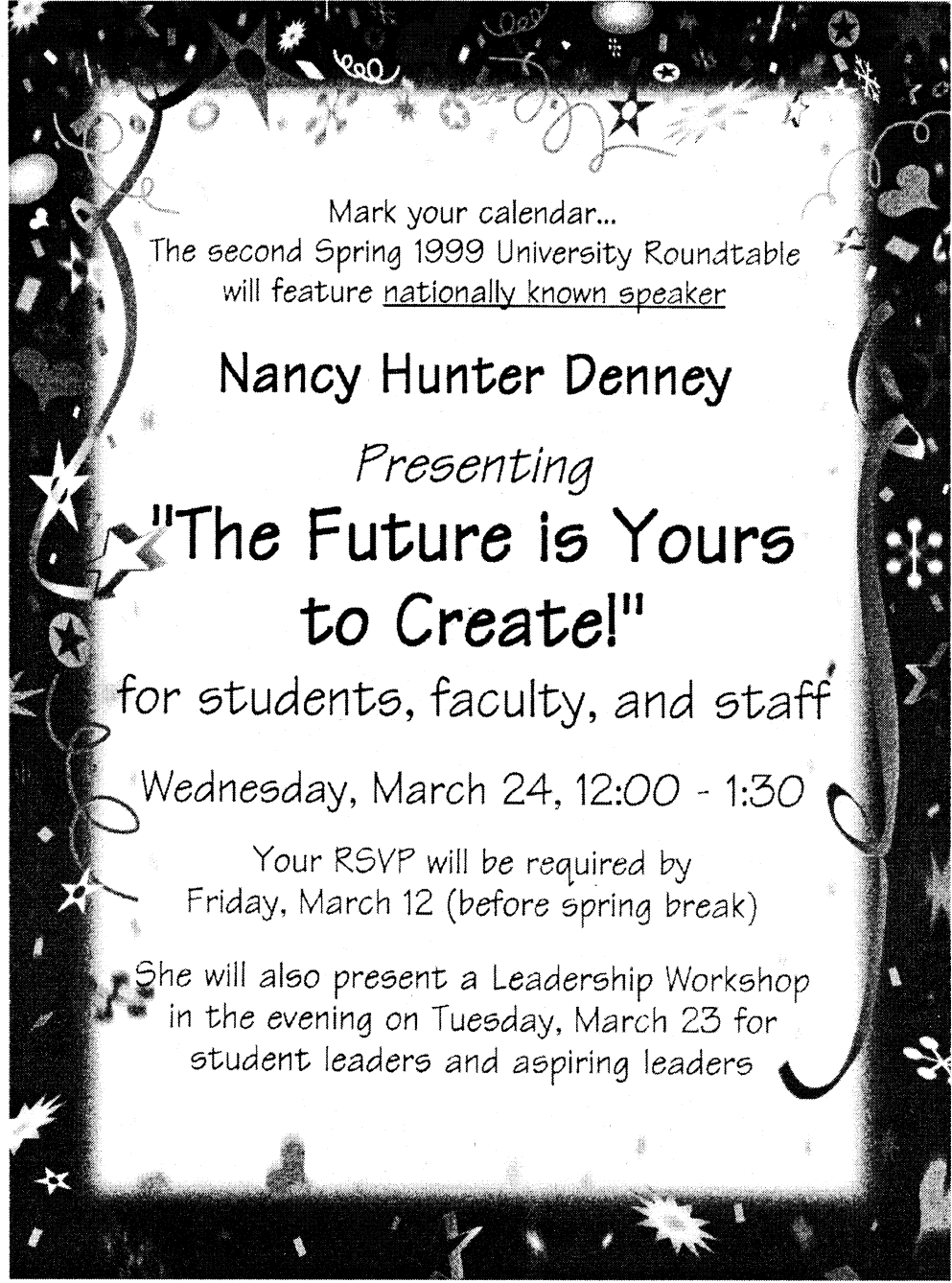
WHERE: Merseburg - Sachsen-Anhalt (formerly East Germany)

COST: Round-trip airfare from Atlanta; SPSU tuition (min. 5 credits); Personal expenses

Room/Board/Excursions - **FREE**. Accommodations to be in dormitories.

Financial Aid available - check with Financial Aid Office

For more information, contact:
Charlotte Janis, Director or
Dorothy Savoy, Administrative Secretary
International Programs & Service - Bldg E-144/143
(770)528-7903 - e-mail: cjanisl@spsu.edu



Mark your calendar...
The second Spring 1999 University Roundtable
will feature nationally known speaker

Nancy Hunter Denney

Presenting
**"The Future is Yours
to Create!"**

for students, faculty, and staff

Wednesday, March 24, 12:00 - 1:30

Your RSVP will be required by
Friday, March 12 (before spring break)

She will also present a Leadership Workshop
in the evening on Tuesday, March 23 for
student leaders and aspiring leaders



Better hurry!
The secret is out

**University Commons is
The Place to Be
for students in search of
great housing.**

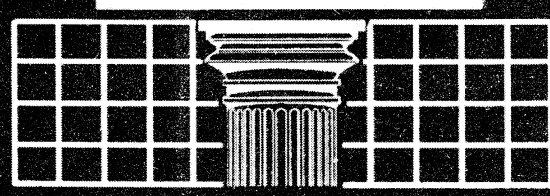
**Now Leasing
for Fall '99**

7-9 2 - 8 2 4 6
CALL NOW!
www.capstone-dev.com

FEATURING:

- 2 & 4 bedrooms
- fully furnished
- panic buttons
- washer & dryer
- free parking
- individual leases
- private bedrooms
- fully equipped kitchens
- volleyball & basketball courts
- copier & fax available

**UNIVERSITY
• COMMONS •**



APARTMENTS
▶ 1150 SOUTH MARIETTA PKWY ◀



*Wednesday Night
Swing Dance Lessons*

*Student Center Ballroom
March 24, 1999
8:00PM*

Sponsored By Your Campus Activities Board

*\$2.00 per couple
(\$1.00 per person)
Pay @ SC InfoDesk*



Short Term Temporary Help

Can work at Home!
Must have good Math Skills (Calculus).
Good Pay!
Call Toll Free 1-877-630-5307

SUMMER JOB

LIFEGUARDING in Atlanta and suburb
\$6.00-\$12.00 an hour based on years of experience
FREE Lifeguard Certification Classes (on weekends)
For more information please call:
Blue Whale Lifeguard and Pool Service, Inc.
(770) 578-5071/ (404) 680-3852

Julius Caesar

Thursday, April 8

7:30 p.m.

At Atlanta's
Shakespeare Tavern
499 Peachtree Street

\$2 tickets for students on sale March 22
\$3 tickets for faculty staff if remaining March 26
limit of two tickets per person

Sponsored by the SPSU Cultural Series

William Shakespeare's

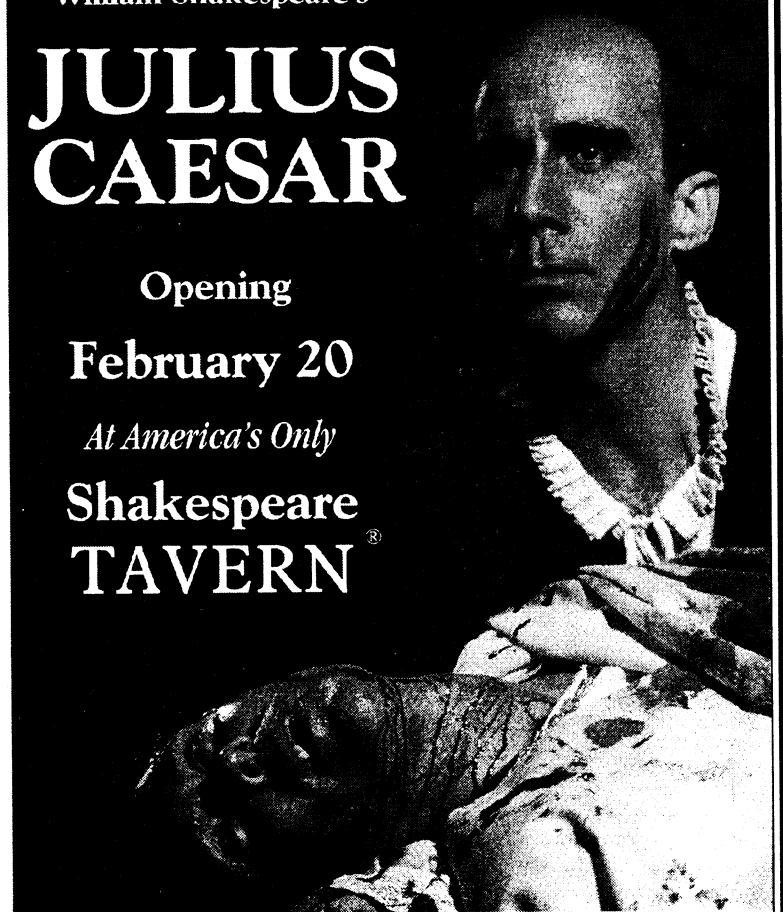
JULIUS CAESAR

Opening

February 20

At America's Only

Shakespeare
TAVERN®



Last but not Least

By Kelleen D. Williams

On Thursday, Feb. 25, the Running Hornets bid a fond farewell to their graduating seniors. Before the tip off, each senior was escorted onto the court by their parents. The five seniors are:

Eric Blair (Guard)
David Jones (Forward)

Deon Spear (Forward)
Bryan Swain (Guard)
Haran Walker (Guard)

These five gentlemen have been instrumental in producing a successful season for the Hornets. Along with the Coaches and team, we the fans would like to also wish them success and prosper-

ity.

During the half, a very special and momentous event took place. Southern Polytechnic State University officially started their own Hornet Hall of Fame. The first individual to be inducted is Robert Jordan. He was the basketball coach from 1965 to 1974.

For those of you who may have missed it, the last game of the season was definitely a night of honors. We, the fans, would like to thank the Hornets for a very well played season. There was never a dull moment at any of the games. No matter what the scoreboard may reflect, the Running Hornets will always be winners to us.

Congratulations on a great season. We look forward to the Next!



Southern Polytechnic State University 1999 Tennis

March 2	Tues	LaGrange College	2:30p.m.	Marietta
March 3	Wed	Berry College	2:00p.m.	Marietta
March 18	Wed	Emmanuel College	3:00p.m.	Franklin Springs, GA
March 31	Wed	Shorter College	2:30p.m.	Rome, GA
April 6	Tues	Emmanuel College	3:00p.m.	Franklin Springs, GA
April 7	Wed	North GA College	3:00p.m.	Dahlonega, GA
April 13	Tues	LaGrange College	2:30p.m.	LaGrange, GA
April 15	Thurs	Brewton-Parker	3:00p.m.	Marietta
April 17	Sat	Emmanuel College	11:00a.m.	Marietta
April 23	Fri	GA Southwestern	2:30p.m.	Americus, GA

Head Coach- Lee Tucker- O-(770) 528-7215

Roster

Glen Hill
Jorge Altamirano
Matt Hallman
Jacob Bush
Nathan Heinlein
Elizabeth Varnidor

Attention!

CHEERLEADING TRYOUTS

Will be held For All interested
SPSU
MALES And FEMALES!

The clinic begins April 26 and ends on April 29
The actual try-out will be
Saturday May 1, 1999.

ALL interested students must attend both
the clinic and the try-out.

For more information, please contact:
Melanie @ 770 499-2701

Intramural News

The intramural basketball season has come to a close with some great play-off action. In the staff tournament, FOG defeated the Plant Rebels 76-51. Leading the way for FOG were Mike Helfer (23pts.) and Barry Birkhead (9pts.). In the finals of the fast league, Team Pressure took home the championship over Team Hoopers.

In the recreational league tournament, the first round saw Third Flo' defeat the WGAD's 46-37 behind 15 points from David LaMattina. Also, Half Pi defeated the Glory 60-35 with Brandon McLain pouring in 15pts. The Shadow Walkers defeated TKE 48-21 and Sigma Nu beat Dragonball 51-34 with Nick Newkirk scoring 21 points.

In the second round, BSU defeated Third Flo' 58-38 as Karsten Slater chipped in 13 points to lead the way. Sigma Nu beat seeded Pi Kappa Phi 53-45 in a tough game, which Newkirk scored 26 points. Also, H-Town made easy work of the Shadow Walkers 61-47 as Donnie Holmes scored 18 points. Finally, Half Pi defeated fourth-seeded Scrubs 54-50 as Brandon McLain scored 13.

In semi-final action, BSU defeated Half Pi 81-62 as Jay Tooke scored 32 points. In the other semi, H-Town overcame a half-time deficit to beat Sigma Nu 58-51 as Jeff Stovall scored 17 points. The finals were played on Thursday, March 5, and BSU defeated Team H-Town 67-46. Leading the way for BSU was Brian Frost scoring 22 points. Jeff Stovall led H-Town with 16 points.

In the state tournament qualifier, BSU defeated the Hoopers and Pressure handled Half Pi. BSU and Pressure will represent SPSU March 5-7 at Georgia Tech for the Georgia Collegiate Basketball Championships. Good luck teams!!

As spring season rolls closer, Intramurals is getting ready for the softball season. Other sports coming this spring:

<u>Sport</u>	<u>Sign-up</u>	<u>Play Begins</u>
Softball	March 1-7	March 8
Soccer	March 4-11	March 22
Tennis Challenge	March 22-26	March 29
Golf Tournament	March 25-April 1	April 2
Outdoor Volleyball	April 15-22	April 26

Get involved in these spring sports and have some fun. If you do not have a team to play for, be sure to sign-up on the free agent players roster in the Rec Center and let us find you a team.

In Floor Hockey news, Team Westside rolled through the round-robin tournament going undefeated. Leading the way for Westside was top-scorer Shane Metzger who scored 11 goals in two games.

Also, in racquetball, Dustin Sperber won the men's single tournament and Glen Hill and Jorge Altamirano took home the men's double championship.

Basketball Play-Off Scoring Leaders (2 game min, Rec League)

Nick Newkirk	Sigma Nu	23.0
Brandon McLain	Half Pi	17.3
Donnie Holmes	H-Town	15.5
Levon Rhone	Shadow Walkers	15.0
Bryan Frost	BSU	15.0
Karsten Slater	BSU	14.0
Nick Hill	H-Ton	13.5
Jay Tooke	BSU	13.0
Jeff Stovall	H-Town	12.7

25 Point Performers of the Year

Larry Knott	Hoopers	32
Jay Tooke	BSU	32, 37
Young Swift	Plant Rebels	25, 31
Troy Hill	Pressure	26, 32
Nick Newkirk	Sigma Nu	26
Vamsi Sanna	Dragonball	27

THE VENT

*These are questions and observations expressed to The Sting. These do not necessarily reflect the views of the editor or the staff. Do you have something to VENT, or an answer to any of these questions? Let us know!

- why more student fee increases
- they're accusing us of stealing
- can any student get in any organizations office
- we need more activities in the gym
- why are there only two electrical labs with the correct equipment
- what happened to the hot food line
- why is this a technological school with no new technology
- why don't the cheerleaders cheer at halftime
- where is the ease that semesters were supposed to bring
- why do we complain that nothing goes on at this school when we don't support the things that do happen
- why doesn't WGHR reach outside of the parking lot
- is it possible to call for help from the dorms between the hours of 7 p.m. and 1 a.m.
- why are there no student organization offices in the new building

The Rambler

By Shaidu Kiven

Once more, it is with great pleasure for this philosophical column to be endowed with issues that affect our Southern Polytech's community. As you well know, it is very easy for things to happen too fast and dissipate without the knowledge of those around. In fact, this scenario is just like boiling kettle on a fire. When the kettle overflows, it turns off the fire so suddenly such that those around miss everything. Things seem to happen the same way in our school community. The Rambler, therefore, is the humblest point in the university where things from the high point settle and are shared with everyone.

Dear students, each one of you can impact the outcome of this institution in years to come by your input. There are many avenues to improve things in this school and one of them is by being involved in the Student Government

Association. For your information, the SGA represents all the students and can influence the outcome of life in the university with regards to the welfare of students or otherwise. This student organization has a say if your fee will be increased, how part of your fee known as the student activity fee will be spent and many other things that affect our stay in this community. So, it is very important that each student acquaints her/himself with the operations of this powerful organization. Find out at the Student Center what you can do about and for the SGA.

There is trend on campus here that has baffled the minds of many a thoughtful student. Things seem not to be on a sound footing – enrollment is down, students wishing to print anything have to provide their own papers in some departments, the school is running on deficit (as we are made to understand). Now, the question in everyone's

mind is as to who is responsible (or not responsible) for all these! I bet the Rambler is not to speculate on this chaotic situation but there are more questions to be asked than there are answers. One of the very first queries would be to know what exactly the school is doing to recruit and retain students in this institution. It appears that not much is being done about this issue. One sector of the student body is the international students, who pay more than three times the tuition paid by residents, (which is okay). However, there is an understanding among these students that there is little done to make their stay in school here run smoothly. For example, students process their admission applications, which for the most part are handled by people who care little about the hassles the prospective students go through. And when some of these students get into the United States for the first time, there is no

arrangement to help them get settle as is the case in schools that care for their international students.

Another disturbing issue about this school of ours is the policy of hiking the amount of money the students have to pay. Some of the hikes may be justified (even unjustifiably) but some are clearly unacceptable. We will consider two cases at this point in time due to the limit in space and time. There are rumors all over the place for an inception of a new fee baptized as Technology Fee. Of course, technology (whatever that means) needs some finances to keep breathing. The generality of the students wonder why those concerned can not develop a partnership with the business community so as to have the necessary nutrients needed for the welfare of the technology! The only things we have always been informed of is that businesses value and appreciate the output of SPSU. The

said businesses are always looking forward to hiring the well-prepared students of Southern Polytech.; one would expect those companies to be willing to have an input in the formation of those valuable students. The second fee, which should be completely annulled, is the Health Fee. Can someone explain to the student body what that fee is used for? Instead of doing away with an unnecessary fee, there are efforts to increase it. If the school intends to provide health insurance, it should do so. If not, there is no need for students to pay over twenty dollars a semester just to be given the directions to some place where your illness should not exceed \$100.00. It is the consensus

Poetry Page

I used to...

By Michelle Mason

I used to look at shows with whites killing blacks, Now I look at Black on Black crime, So I asked, "Where is love?" And a wise voice said, "Look to yourself." I used to look at white girls' straight hair, And the way black girls' hair can be relaxed, So I asked "What is beauty?" And a wise voice said, "Look to yourself." I used to look at all the guys that wouldn't dare date me, And all the girls who wouldn't be friends, So I asked, "What is wrong with me?" And now that wise voice says, "Look Around." So I look around and I see My Best Friends always having my back, My boyfriend of over three years. And the undying love of my Sorors and Frat. I can now see- Nothing is wrong with me- I am Special, I am Beautiful, I am Love.

Proud to Be

By Leronda Q. Phillips

A black woman is what I am It's what I'm proud to be Going all the place I've been, Seeing all the things I've had to see I've been from Africa to America

And I'm here to say I've seen my people sold in slavery And I've seen them make it to their graduation day

A black woman is what I am It's what I'm proud to be I'm tall, short, thick, and thin By all means, I'm beauty My hair is short, long, kinky, curly, And sometimes straight I wear it twisted, dreaded, cornrolled, And in braids

A black woman is what I am It's what I'm proud to be Loving who I am and Accepting me for me

Courageous Woman

By Kelleen D. Williams

The struggle was hard and long BUT We made it through Opposition was around every corner STILL We made it through Some of us were ridiculed YET We made it through

We've worked hard to get where we are today Our shoulders were heavy with many burdens As time progressed the burdens became lighter For a while it seemed they

would be no more What we failed to realize is... Life is a struggle We must be strong enough to endure it.

Sister Love

By Kristie K. Todd

A special love shared between two women, Joined together by their parent's blood They have been there for each other since they were children, Strengthening their sister love.

They never let men come between them Like those on TV Never have to choose between me or him Because they have love, understanding, and serenity.

My sister is my best friend The one to whom I confide She will always always be there for me until the end, Standing tall right by my side.

We find strength in each other To overcome the obstacles we face in this world This trait we get from our mother Ever since we were little girls.

My sister means everything to me, Because she is my heart soul. She makes me the role model I wish I could be, So, that we both can reach our ultimate goals.

No matter what I will always be there, Even when the world seems to be the enemy However, life isn't fair, But you know that you can count on me.

Proud

By Kelleen Williams

STAND UP!
And be recognized among you people

STAND UP!
And let the world hear the plight of your people

STAND UP!
And share your part of the plan It's not about being defined by no man

STRONG BLACK WOMAN
PROUD BLACK WOMAN
How dare you hang your head Just because your husband comes home from work and goes straight to bed

SEE BLACK WOMAN
HEAR BLACK WOMAN
All of the praises that your children sing They all realize that nothing will ever compare to the joy you bring

TOUCH BLACK WOMAN
TASTE BLACK WOMAN
The food reaped from the labor of your hands Cared for you just like back in the mother land

STRONG BLACK WOMAN
PROUD BLACK WOMAN

STAND UP!!

Girlfriend, Mother, Sister, Wife

By Michelle Mason

Dark Chocolate, Caramel, Brown Sugar, Honey Tall, Strong, Reaching, Proud They are all representative of the black woman. You'll always know how she feels, but she's never too loud

She's your girlfriend, mother, sister, wife. Don't ever put her down as she's reaching for the stars. If you always comfort and support her, she'll stay real. Work and be a gentleman and your relationship may go far.

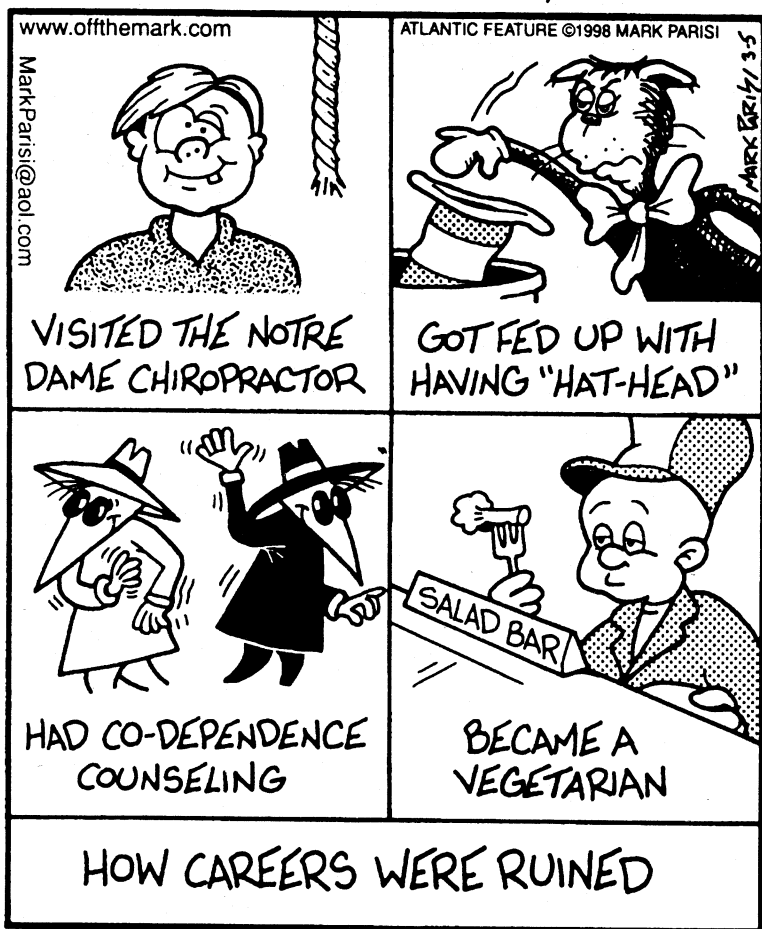
Dark, light, aggressive, shy- the black woman can fulfill your needs. She is unique and comes in many different styles. So don't call her any names and always stay true. The black woman is beautiful; get to know her, you'll stay for a while.

If you would like to have your poems published, please submit them to the office of the Sting.

Interested in writing? Want to see your views and ideas put in print? If so, come join the staff of "The Sting". Your ideas are needed! If interested call (770) 528-7310 and leave a detailed message about your writing interest and contact information. We look forward to hearing from you!

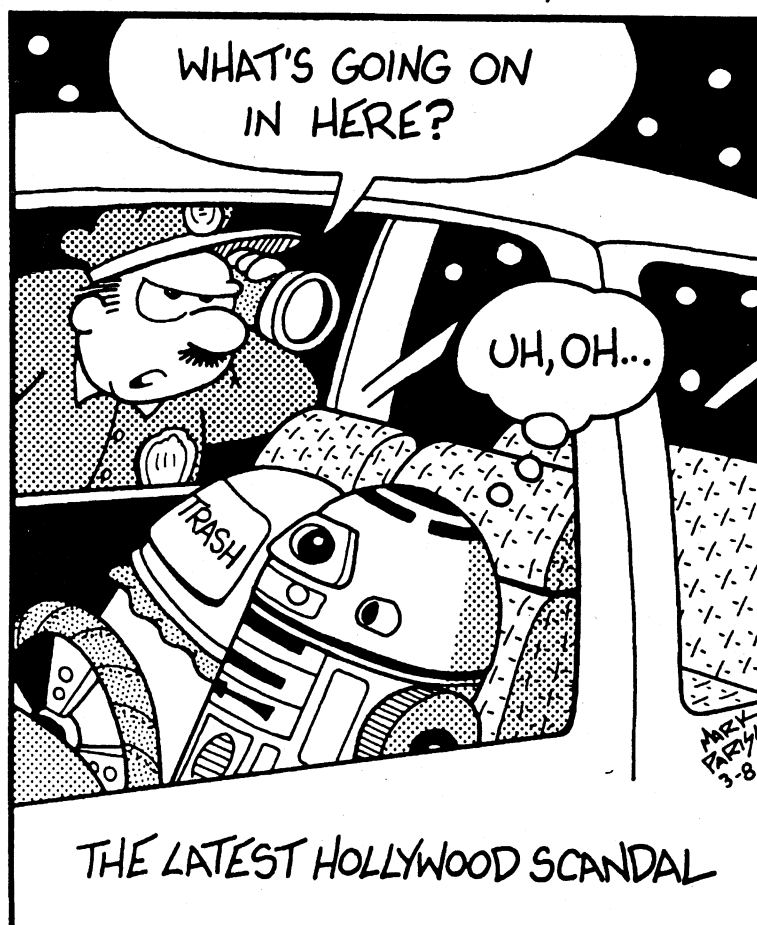
off the mark

by Mark Parisi



off the mark

by Mark Parisi



off the mark

by Mark Parisi



off the mark

by Mark Parisi



off the mark

by Mark Parisi



Have a Fun & Safe Spring Break!!

From the Staff of "The Sting"