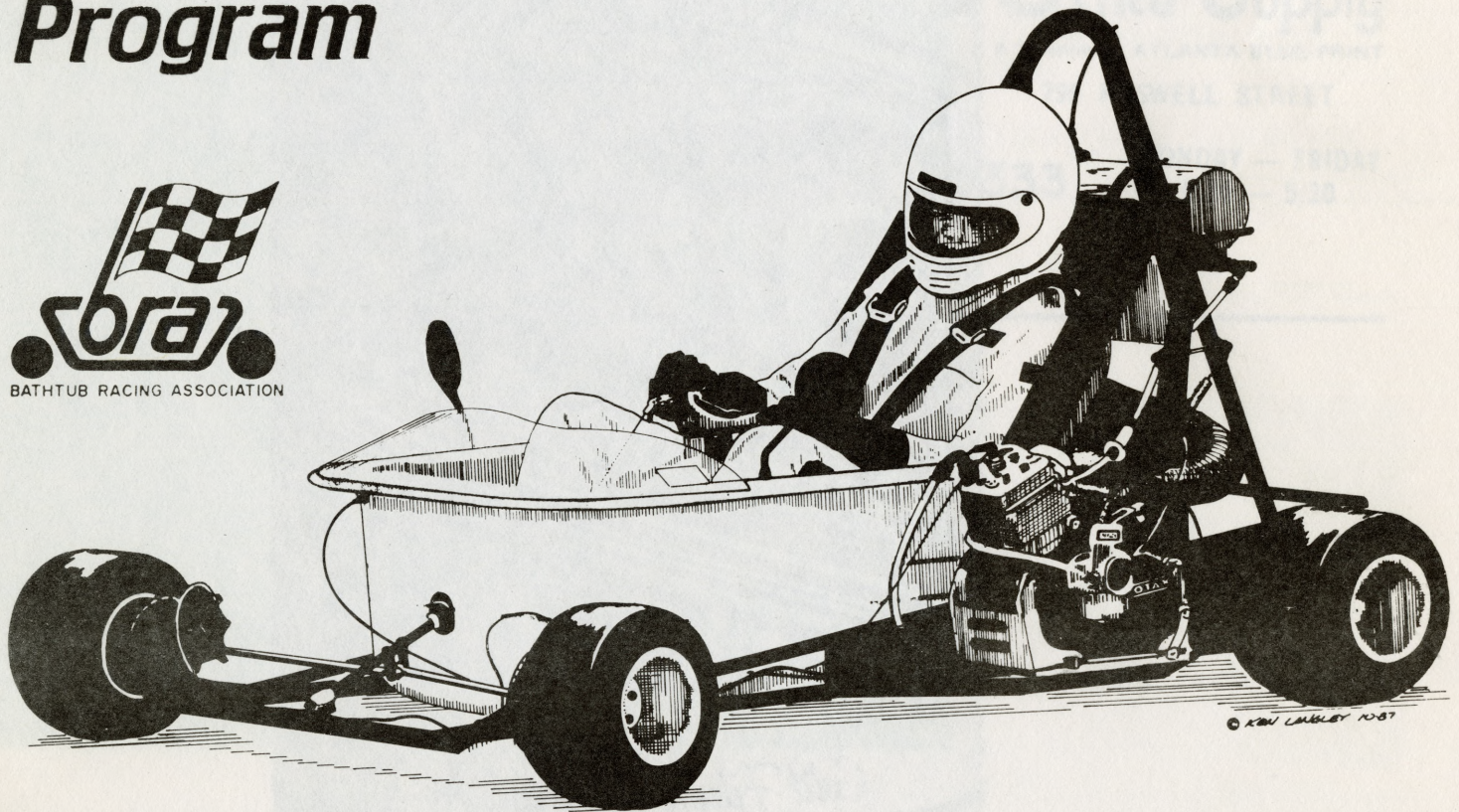
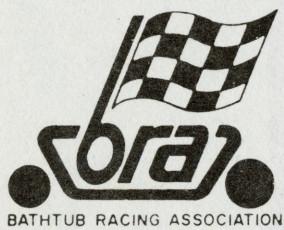


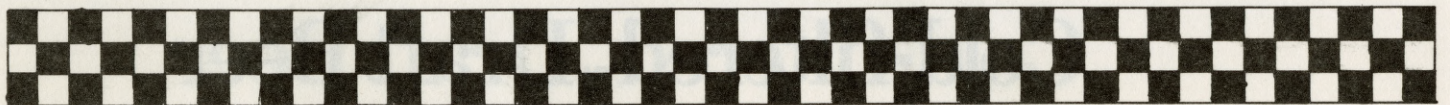
Fall, 1989  
Sunday, Nov. 12

# *SOUTHERN TECH'S* **BATHTUB RACE**

*Official  
Souvenir  
Program*



***"The Cleanest Race in Town"***



Better Brands  
SINCE 1935



**As Real As It Gets**  
Cold-filtered™ Draft Beer



*creative*



*CHRISTMAS*

*IDEAS*



FROM  
RIVERA-GREY GRAPHICS



## **AUTO COLOR**

**Auto Paint & Body Supplies**  
419 glover st.  
Marietta, Ga.

**427 - 1853 or 422 - 7448**

**ARTIST -  
ENGINEERING -  
ARCHITECTURAL  
SUPPLIES**

# **STUDENT DISCOUNTS!**

**Cobb Reprographics  
& Office Supply**

A Division of ATLANTA BLUE PRINT

799 ROSWELL STREET

**422 - 0333**

**MONDAY — FRIDAY  
8:30 — 5:30**



**THE SOUTHERN TECH NATIONAL ALUMNI ASSOCIATION**

**EXTENDS ITS BEST WISHES**

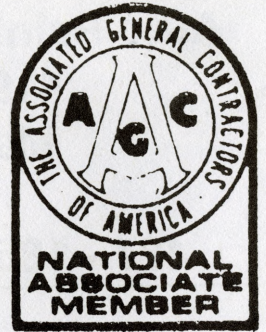
**TO**

## **THE 1989 FALL BATHTUB RACE**

S O U T H E R N  
**ENGINEER'S  
BOOKSTORE**

ACCA • ACI • AISC • ANSI • BOCA • ICBO • NFPA • SBCC

1111 Clay Street  
120 Loop  
Marietta, GA 30060  
404-499-8434



TUB NAME: Racer X  
DRIVEN BY: Ken Boggs  
CO-DRIVER: None  
COLORS: Red, White & Black  
PIT CREW: Keith Taylor  
          Jim Holiday  
          Kathy Coley  
          Rick Payne

CHARACTERISTICS: Margay Wheels, Bridgestone Racing Slicks, Dual Rear  
Enginetic Disc Brakes, Adjustable Camber Front Spindles, 7075 Aluminum  
Axle, Yamaha YZ125 Engine

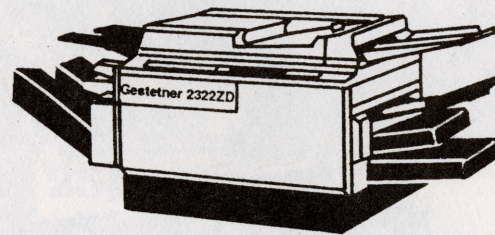
SPONSORS: Tau Kappa Epsilon Fraternity and Back-Pocket Racing

# AFFORDABLE

## Duplexing Now Available through ALL SOUTH COPIERS

### The Gestetner 2322ZD – Deluxe Diversification

- Touch-twin color selection
- Touch-sensitive edit board
- Zoom magnification of 60% to 200%
- Beautiful copies at 22 per minute
- Auto original size detection and cassette selection
- Copies up to 11" x 17"
- Optional sorter, reversing automatic document handler, and 2500 sheet cassette



**ALL SOUTH  
COPIERS**

**SALES • SERVICE • SUPPLIES**

2080 Favor Road Marietta, Georgia 30060 (404) 434-5274



TUB NAME: NOBRA Model 38D  
DRIVEN BY: Tim Barrett  
CO-DRIVER: Victor Werner  
COLORS: Sigma Nu Black and Gold  
PIT CREW: Victor Werner  
Russ Hancock  
Bill Etheridge  
Ken Alpren

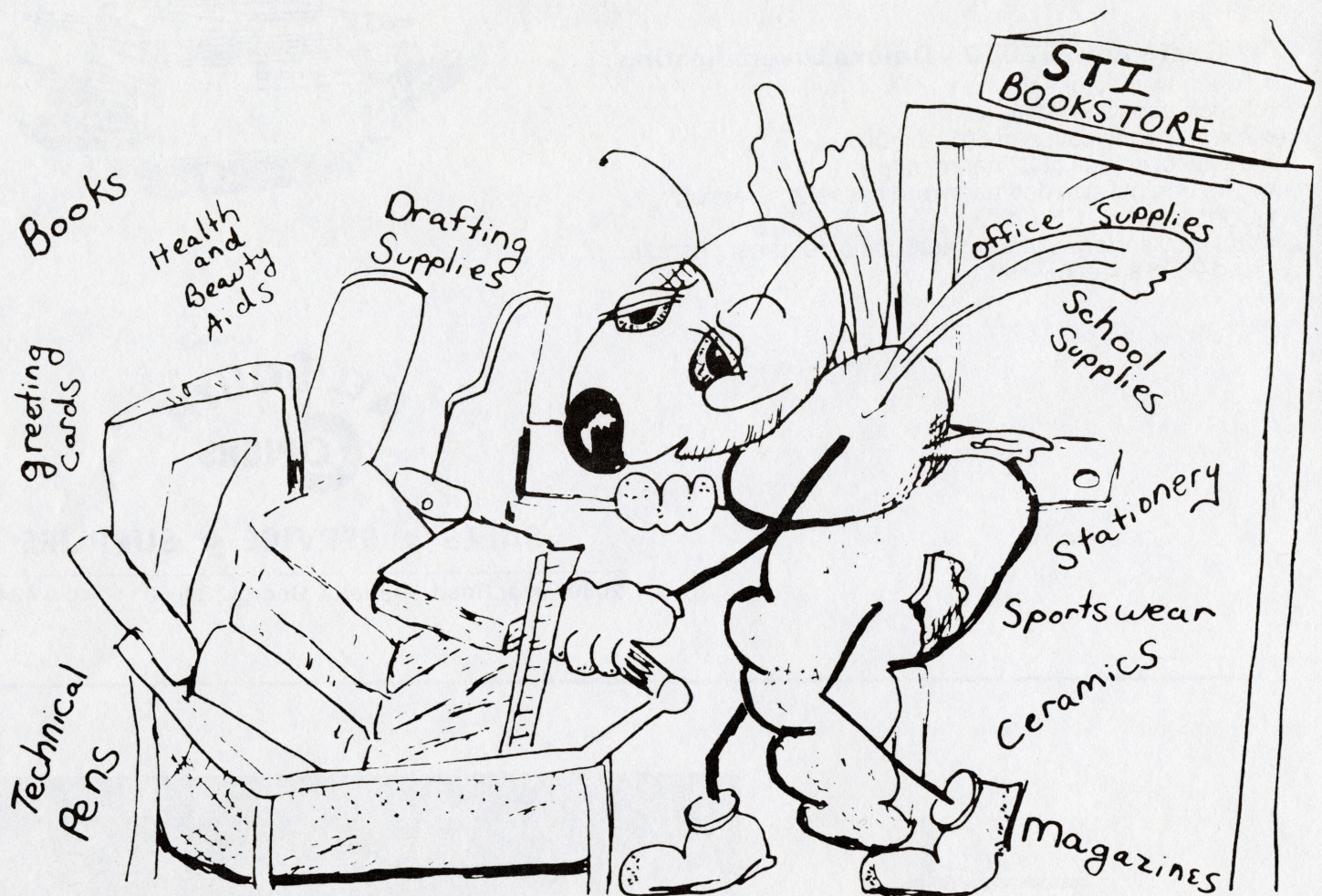
CHARACTERISITICS: 185cc CanAm, 4-Wheel Disc Brakes, Rack and Pinsion Steering, Quick Change Fuel Cells, Redesigned Chrome Molly Frame, Aluminum Rear Axle.

SPONSORS: National Organization for Bathtub Racing Advancement (NOBRA), Barrett's Bodyshop, Smyrna Tire Service, Saf-T-Green, Sigma Nu.

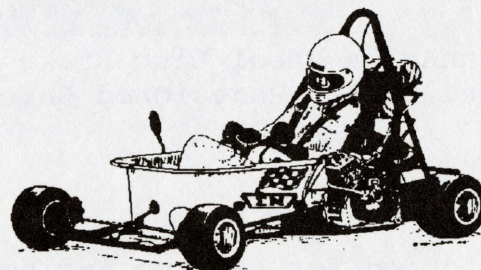
SPECIAL THANKS TO: FYLL, Roy Berger and Sigma Nu Fraternity

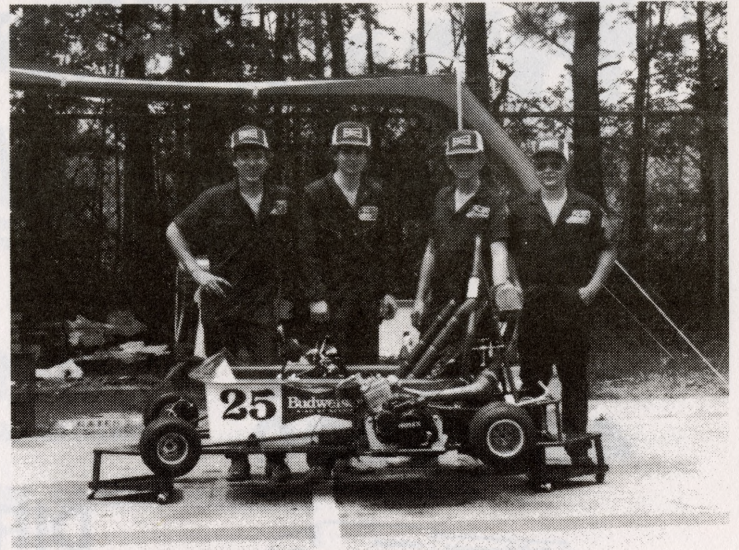
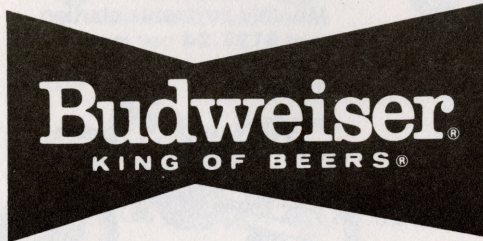


# Southern Tech's Bookstore



We  
Support the  
Bathtub Racing Association





TUB NAME: Miss Budweiser  
DRIVEN BY: Greg Caudell  
CO-DRIVER: Scott Irvin  
COLORS: Red and White  
PIT CREW: Don Caudell  
Greg Bloodworth  
John Gibson

CHARACTERISITICS: 125cc Liquid Cooled Rotax Engine, 4-Wheel Disc Brakes and More Trick Stuff

SPONSORS: Budweiser, Atlanta Beverage Company, Superparts, Sigma-Nu

# superparts

superkart parts & accessories

**'Your ROTAX headquarters on the East Coast'**  
**Specializing in superkarts and your  
dealer for Emmick Gearbox Karts.**

Redeye Electronics (EGT)  
Kelgate Brakes & Parts  
Earl's Hose & Fittings  
Van K Wheels & Hubs  
Lectron Carburetors  
Butterfly Shift Kits  
Stallion Fiberglass  
Bridgestone Tires  
Bell & Simpson  
Regina Chain  
Shift Cables  
HP Pipes

**HERE IS WHY WE  
ARE THE BEST,**

*\$20,000 ROTAX INVENTORY  
128 ENGINES IN STOCK  
EXPERT SERVICE FOR  
125cc & 250cc ENGINES  
SAME DAY UPS SHIPPING*

**(404)926-1920**

**CALL US TODAY,  
AND WE'LL PROVE IT!**



# PROLINE HONDA Kawasaki

SALES & SERVICE  
**497-0990**



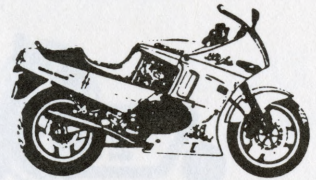
**GWINNETT PLACE MALL**  
I-85 EXIT 40 ACROSS FROM SEARS  
Store hours M-F 10-8 PM  
Sat. 10-5 PM

Directions: From Atlanta take  
I-85 north to exit 40

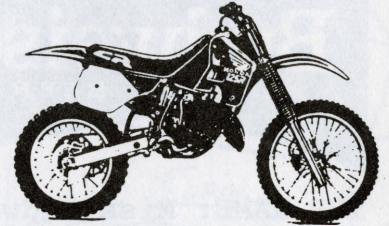
**STREET**

**DIRT**

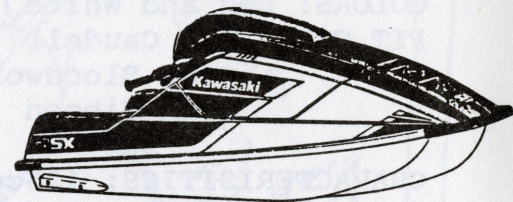
**WATER**



Monthly payments starting  
at \$127.24 per month



Monthly payments starting  
at \$68.94 per month



monthly payments starting  
at \$113.41 per month

**\$25 Starts**  
**Your Christmas Layaway**



TUB NAME: THE HOT TUB  
DRIVEN BY: BILL ETHRIDGE  
CREW: RUSS HANCOCK  
TOMMY MARTIN  
EDDIE SLAY  
"DIRTY" DICK ETHRIDGE  
COLORS: PINK, BLUE, & WHITE  
CHARACTERISTICS: "TOO MUCH, TOO SOON!!!!!"

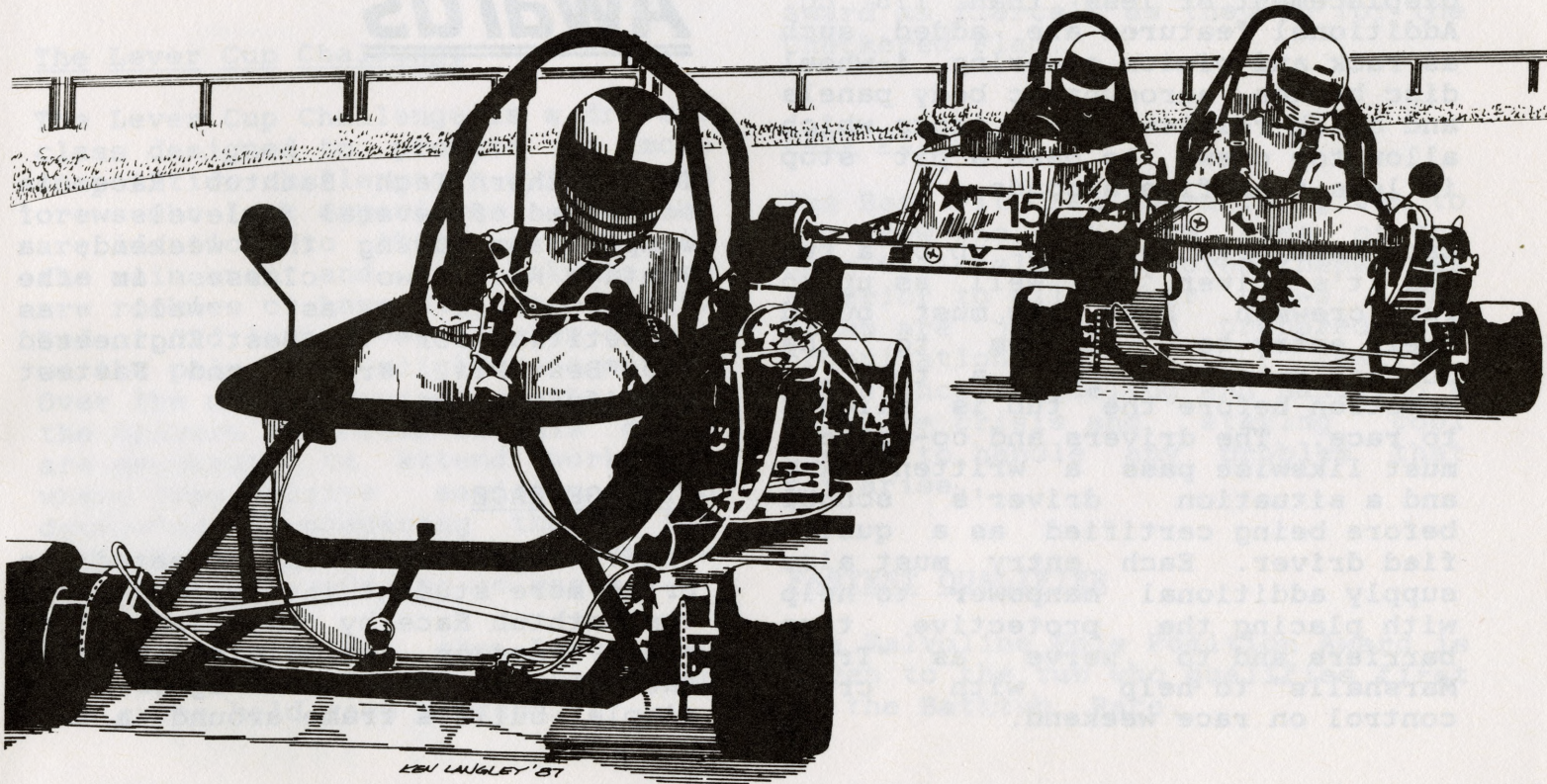
SPONSORS: D&B HONDA PRO RACING  
SPECIAL THANKS TO D.D. FOR THE FINANCIAL SUPPORT,  
ALL THE SHOE STORES FOR TURNING ME LOOSE, AND THE SIGMA  
NU TRACK MARSHALLS



# Quik List

TUB #	DRIVER	
1 (LCC)	KEN BOGGS	TKE RACING
2 (LCC)	TIM BARRETT	NOBRA RACING
6 (LCC)	***	SPRING GARDEN COLLEGE
7 (LCC)	PAUL WILSON	***
9 (LCC)	BILL ETHRIDGE	D & B HONDA
15	EDWARD JORDAN	MILLER RACING
17 (LCC)	JOHN RODGERS	MACINTOSH RACING
25	GREG CAUDELL	BUD RACING
30 (LCC)	LEE MILLER	SGA/WGHR
86 (LCC)	***	VILLANOVA
96	RODNEY BRIDGES	SIGMA NU ALUMNI

(LCC) denotes Lever Cup Challenge Entrant  
\*\*\* no information

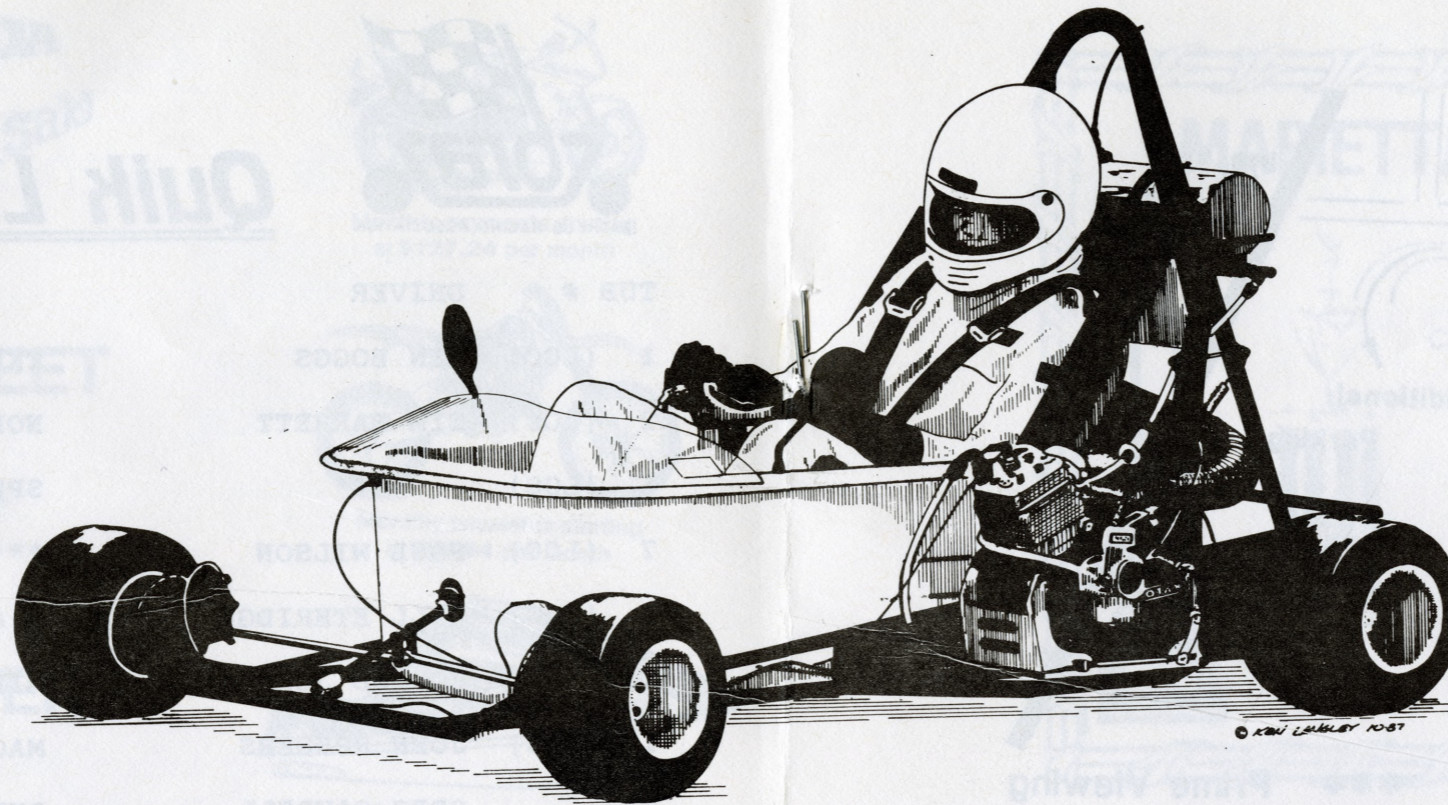


# The Race

Just as Southern Tech has grown, so has the Bathtub Race. With its meager beginnings during the mid-sixties as fraternity pledges dragged a bathtub full of iced down beer and a driver through a muddied road, the Bathtub Race has evolved into the high-tech form of racing that it is today. The race gives the students a chance to show off not only their driving and split second pit stop performances, but also provides an outlet for alternate applications of their engineering skills taught in the classroom.

The racing vehicles or tubs as we call them are actually 140 pound cast iron, roll rim, claw foot bathtubs from years ago. The crew usually must search diligently to find a suitable tub; which usually involves tromping through many a cow pasture. The tub is surrounded by a frame of which material and design are devised by the crew to provide the handling characteristics they desire. Then the tub is fitted with an engine, usually a motorcycle engine and transmission having a displacement of less than 175 cc. Additional features are added, such as rack and pinion steering, 4-wheel disc brakes, aerodynamic body panels and quick release fuel tanks which allow top crews to make a pit stop in less than five seconds.

Each team/crew is made up of a tub and its driver, as well as up to four crewmen. Each crew must build their entry to conform to the current rules and pass a tech inspection before the tub is allowed to race. The drivers and co-drivers must likewise pass a written exam and a situation driver's school before being certified as a qualified driver. Each entry must also supply additional manpower to help with placing the protective tire barriers and to serve as "Track Marshalls" to help with crowd control on race weekend.



## Awards

The Southern Tech Bathtub Race is comprised of several levels of competition during the weekend; a Vintage Race, two classes in the "Bathtub Race" as well as competition for the Best Engineered Tub, Best Pit Crew, and Fastest Qualifying Time.

### VINTAGE RACE

The Vintage Race was created to bring more student involvement into the Bathtub Race by competing in an event based on the original Bathtub Race from twenty years ago. It's simple, build a frame around a tub,

put wheels on it, find four strong guys, and go racing, CHEAP! These tubs are man-powered, pushed along a course from dorm two to the Student Center. A permanent first place trophy is awarded to the team which wins, and each spring someone will try to take it away.

### The Lever Cup Challenge

The Lever Cup Challenge is a drivers class designed to promote a more competitive challenge in drivers and crews who lack experience. The tubs are identical to those running in the main event and only drivers who are rookies or have not placed 1st, 2nd or 3rd in an overall race or sat on the pole are eligible to enter. Over the months preceding the race, the drivers and crews in this class are encouraged to attend workshops where they receive assistance in designing and preparing their tub from the more experienced crews, a "Big Brother" approach to racing.

Drivers entered in the Lever Cup Challenge are eligible to compete in two races held race weekend.

The first event is a 15 lap "Heat Race" where the crews of the Lever Cup class may get help from their Big Brother racers in a race designed to give the Lever Cup drivers more track time and racing experience.

The Lever Cup class tubs will also be running in the main event Sunday afternoon. Trophies for 1st, 2nd and 3rd place will be awarded by class for each event.

### BEST ENGINEERED TUB

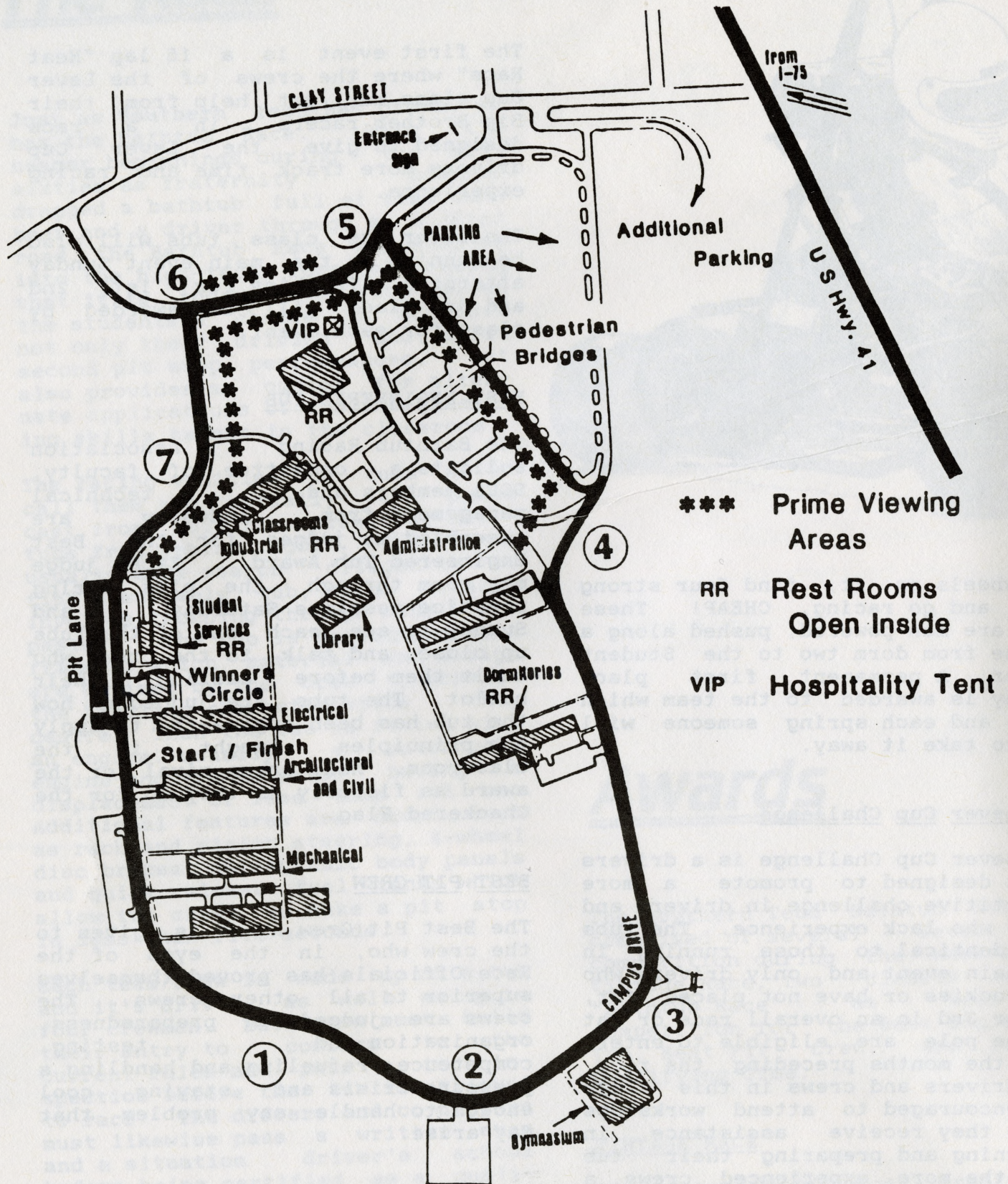
The Bathtub Racing Association solicits a committee of faculty, SCCA members and technical management from industry are assembled as judges for the Best Engineered Tub Award. Each judge may roam through the pits during practice sessions Saturday and Sunday to see each one of the tubs up close, and talk to the crews who built them before casting their ballot. The tubs are judged on how the tub has been engineered to apply the principles taught in the classroom. Many crews rival for the award as fiercely as they do for the Checkered Flag.

### BEST PIT CREW

The Best Pit Crew Award is given to the crew who, in the eyes of the Race Officials has proved themselves superior to all other crews. The crews are judged on preparedness, organization and testing, competence, refueling and handling a pressure crisis and staying cool enough to handle any problem that may arise.

### FASTEST QUALIFIER

The Valvoline Pole Position Award is given to the tub who qualifies first in the Bathtub Race.



# Track Map

**MARIETTA TROPHY & ENGRAVING**

FRED WILLIAMS — OWNER

**QUALITY SERVICE ·  
DEPENDABILITY**

**CUSTOM DESIGNED TROPHIES  
EXPERT ENGRAVING**

- PLAQUES · NAME PLATES
- RIBBONS · MEDALS · PEN SETS
- PLASTIC NAME PLATES
- CUSTOM CAPS — BELT BUCKLES  
T-SHIRTS
- SILVER ENGRAVING
- LAMINATED PLAQUES
- LOGOS ON PLAQUES & WATCHES

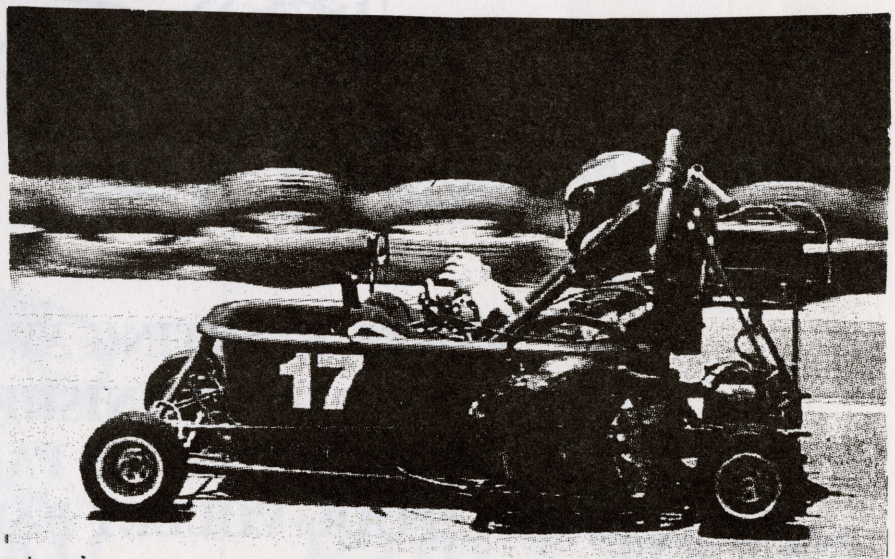
**427-4900**

LOWER LEVEL MARIETTA BOWLING LANE  
565 COBB PARKWAY S.E. MARIETTA, GA.

**BULOVA**  
ARMARCS  
GIFTS  
ACCESSORIES




DIXIE  
PLASTIC



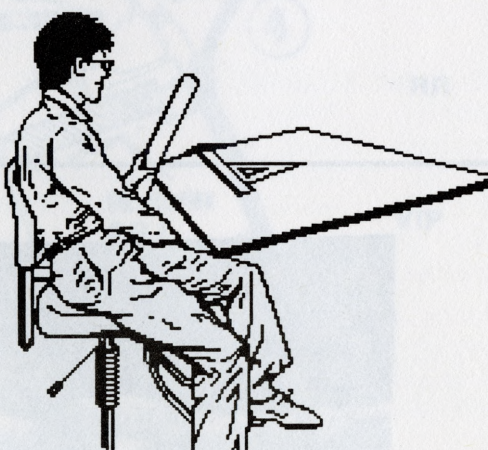
TUB NAME: The Mighty Macintosh  
DRIVEN BY: John Rodgers  
CREW: Skip Chapman (co-driver)  
Bob &  
Ralph

COLORS: Macintosh Red & Blue  
CHARACTERISTICS: 125cc Liquid Cooled Macintosh Engine, 4-  
Wheel Disc Brakes, Quick Change Fuel Tanks  
"ALL HAND CONTROLLED"

SPONSORS: White Water, Connecting Point Computer Center,  
Thanks to Apple Computers

# COLLEGE COMMONS APARTMENTS.

A UNIQUE COMPLEX  
DESIGNED WITH  
THE STUDENT IN MIND.



**RENTS STARTING AT \$170**

**\* FULLY FURNISHED\***

**\* ALL UTILITIES PAID\***

**\* POOL-VOLLEY BALL\***

**CALL 425-8193**

**WE WISH ALL THE BATHTUB RACERS GOOD LUCK!!!**

# Piccadilly Cafeteria

**"Build Yourself  
A  
Healthy Meal"**

536 Cobb Parkway Marietta, Ga 30135  
SERVING CONTINUOUSLY FROM 11:00 AM TO 8:30 PM EVERYDAY  
CARRYOUT AVAILABLE  
Tel. 422-7121

## **BIG A LIQUOR**

957 CLAY ST.  
MARIETTA, GA.  
427-6666

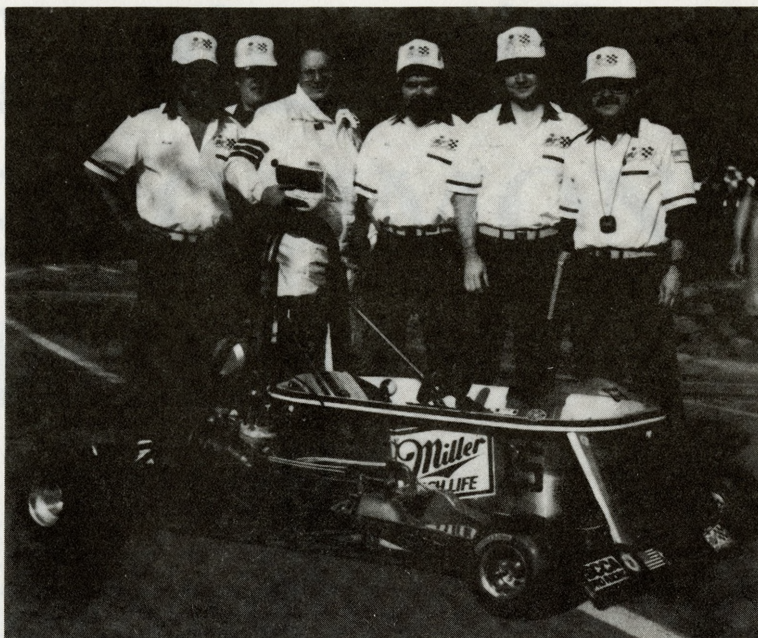
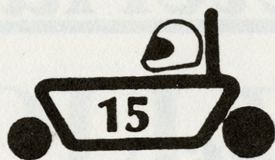


This World Calls for  
**LÖWENBRÄU**

RIGHT ACROSS FROM THE SOUTHERN  
TECH CAMPUS  
SEE US FOR ALL YOUR PARTY SUPPLIES

**Tipperware®**

Pam Langley  
924-1713



TUB NAME: "Taste The High Life"  
 DRIVEN BY: Edward "AJ" Jordan  
 CO-DRIVER: None  
 COLORS: Gold, Green and White  
 PIT CREW: Ken Langley  
           Warren Jordan  
           Doug "Poopsy" Stevens  
           Dwayne Whittle & Mike Smith

CHARACTERISTICS: 1917 Kohler Tub, Rack & Pinion Steering, 4 Wheel Disc Brak  
 An Engine for any Occasion, Tub by Triuba, "Tricker than Trick"

SPECIAL THANKS TO: Our Track Marshalls

## MAJOR MEDICAL

Short Term Group Individual

## DISABILITY INCOME

Income Replacement

Non-Can Guaranteed Renewable

## Benefit Plans INC.

Gary D. Plumlee, CLU

P.O. Box 830033  
 Stone Mountain, GA 30083

(404) 297-0265

## BUSINESS

Key-Man Valuation Buy/Sell

## RETIREMENT

Annuities IRA SEP Pensions

## SHEEPSKIN SEAT COVERS

### GREAT GIFTS

Largest Selection  
In Southeast



FROM **\$49.95**  
 EACH  
 Covers  
 Entire  
 Seat



### GREAT GIFTS!



PERSONALIZED  
 CARPET  
 FLOOR MATS

Plain **59.95**  
 Personalized **83.95**

Personalized to your specifications

Largest Selection in Southeast

FAMOUS  
 SHEEPSKIN  
 HOUSESHOES  
**\$39.95** 12 Mos  
 Warranty



Atlanta's best selection of motoring accessories!!

## UPHOLSTERY

Special on  
 Headliners  
 From

**175**

- LEATHER DRIVING GLOVES
- LEATHER STEERING WHEEL COVERS
- CAR COVERS
- SHEEPSKIN BICYCLE SEATS
- LAMBSWOOL UNDER BLANKETS

**AVRIL**

Exclusives

DIAL COMFORT — 266-3678  
 ATLANTA  
 Corner Buswell Rd  
 and W. Wieuca Rd  
 MARIETTA  
 1091 Cobb Pkwy  
 S.W. at Dubbins



# B. N. Auto Parts Co.

785 Clay St.  
MARIETTA, GA. 30060  
Phone: 428-1551

Open M-F 7:30 A.M. — 7:00 P.M. Sat. 8:00 A.M. — 5:00 P.M.  
Sun. 10:00 A.M. — 4:00 P.M.

2590 Keene Street  
Kennesaw, GA. 30144  
Phone: 423-1595

Open M-F 7:30 A.M. — 7:00 P.M. Sat. 8:00 A.M. — 5:00 P.M.  
Closed Sunday

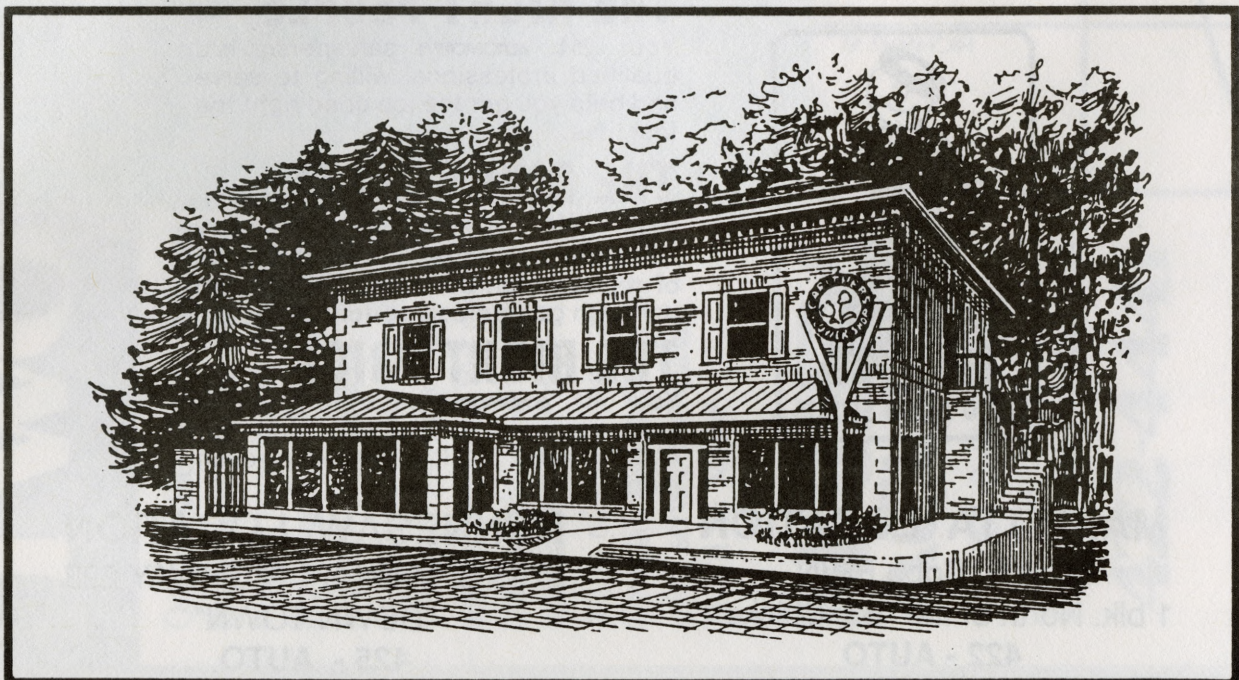
# Smith Bros. Gulf CarCare Center

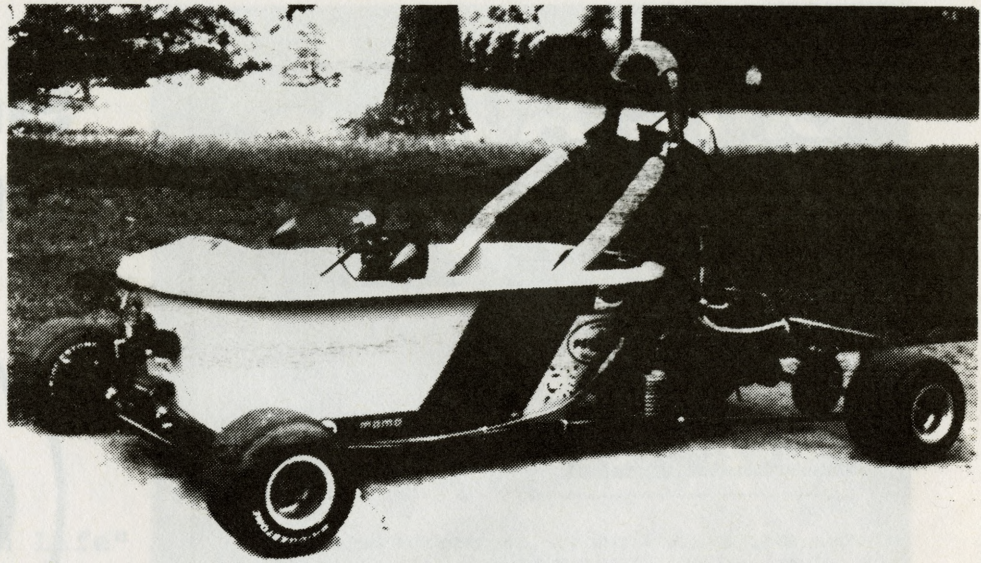
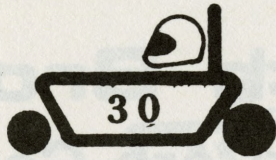


PHONE 428-9316  
CLAY AT FAIRGROUND ST.  
MARIETTA, GEORGIA

# CARITHERS FLOWER SHOP

1708 Powers Ferry Road — Marietta, Georgia 30067  
(404) 980-3000





TUB NAME: Will it Go?  
DRIVEN BY: Lee Miller  
CO-DRIVER: Benny Bohannon  
COLORS: Red, White & Blue  
PIT CREW: Bobby Miller  
Billy Danielson  
Donny McCampell

CHARACTERISTICS: Momo Steering Wheel, 125cc Yamaha Water Cooled Engine, Burrus Racing Tires and 4-Wheel Disc Brakes

SPONSORS: Domino's Pizza, WGHR Southern Tech Radio, Musimatic, Penzoil and Bobby Miller

SPECIAL THANKS TO: All BRA sponsors and everyone for coming to the race and Edward Jordan

# Mr. AUTOMOTIVE



## THE RIGHT PEOPLE

Your *Mr. AUTOMOTIVE* salesperson is a qualified professional willing to serve and help you get the job done right the first time.

## THE RIGHT PARTS

Your *Mr. AUTOMOTIVE* stores carry complete inventories and name brands of replacement parts and backs each part with guaranteed performance.

## THE RIGHT PRICE

Your *Mr. AUTOMOTIVE* parts are priced to save you money everyday and our AUTO-VALUE SPECIALS save you even more.

### MARIETTA LOCATION

106 N. Cobb Pkwy.  
1 blk. North of the "Big Chicken"  
422 - AUTO

### KENNESAW LOCATION

2765 S. MAIN ST. HIGHWAY 293  
"DOWN TOWN"  
425 - AUTO

(Printers of the 1989 Bathtub Race Programs)

Creative Gifts at great prices:

- Blank/Personalized stationary starting at \$1.55
- Personalized stampers
- Assorted Day Planners and Address Books
- Beautiful Pen Sets

AND LOTS MORE!!

With this COUPON you will get 10% off any Christmas purchase of \$10.00 or more.

RIVERA-GREY GRAPHICS

The Trade Center  
180 Cobb Parkway  
Marietta, Georgia

(1/4 mile South of the BIG CHICKEN)  
(404) 429-4877

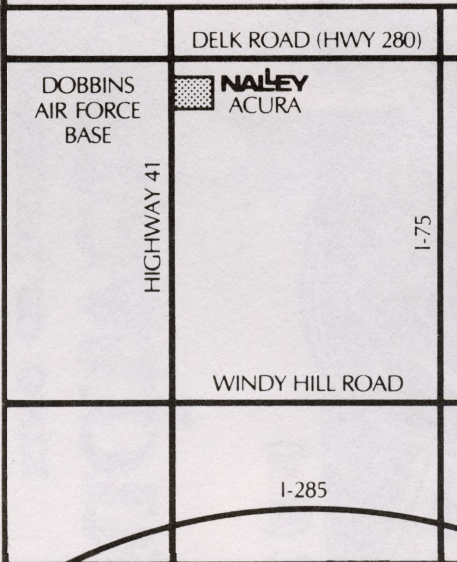
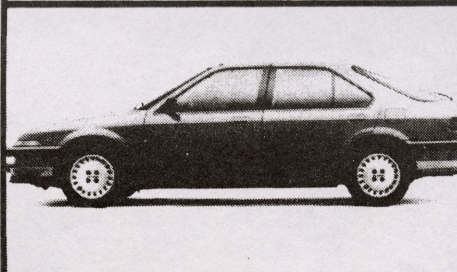
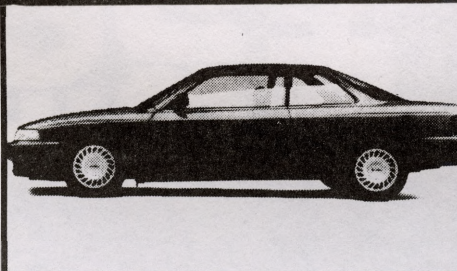
# TWO FOR THE ROAD

One is Nalley Acura, featuring tremendous savings, award winning service and Atlanta's best selection of Acura Legends and Integras. For the second year in a row, J.D. Power & Associates has selected Acura as the number one nameplate for customer satisfaction. Test drive the Acura of your choice at Georgia's largest dealer for sales, service and leasing — That'd be Nalley!

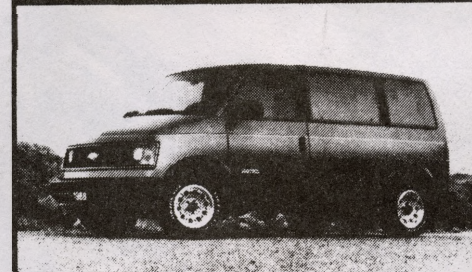
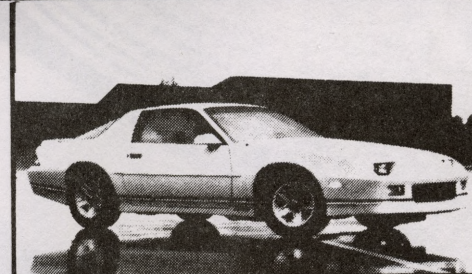
## NALLEY ACURA

1355 Cobb Parkway  
In Marietta  
Across From Dobbins AFB

### 422-4441



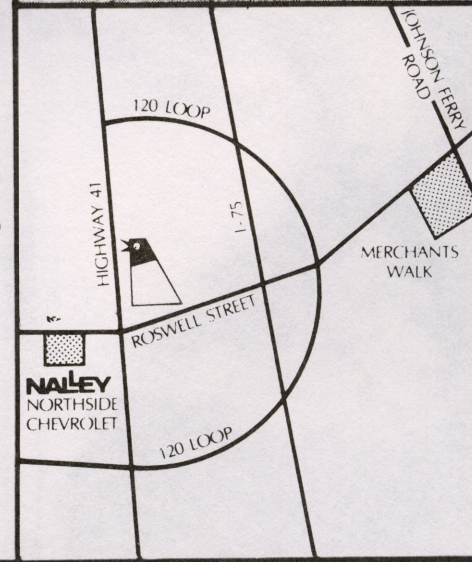
Two is Nalley Northside Chevrolet, Nalley's second Chevy dealership in the metro area. From Caprice to Corvette, from Astro Van to S-10 Pickup, Nalley offers Atlanta's largest selection of Chevrolets. Visit our new northside dealership soon and take advantage of the savings at Georgia's largest dealer — That'd be Nalley!



## NALLEY NORTHSIDE CHEVROLET

900 Roswell Street  
In Marietta  
2 Blocks West Of Big Chicken

### 428-9061





This is the famous Budweiser beer. We know of no brand produced by any other brewer which costs so much to brew and age. Our exclusive Beechwood Aging produces a taste, a smoothness and a drinkability you will find in no other beer at any price.



THE WORLD'S FAVORITE

BUDWEISER LAGER-BEER

12 FL. OZ. (355 ml)

**Budweiser.**

**KING OF BEERS.**

*Brewed by our original process from the choicest hops, rice and best barley malt.*

*Anheuser-Busch, Inc.*

**THIS  
BUD'S  
FOR  
YOU.**